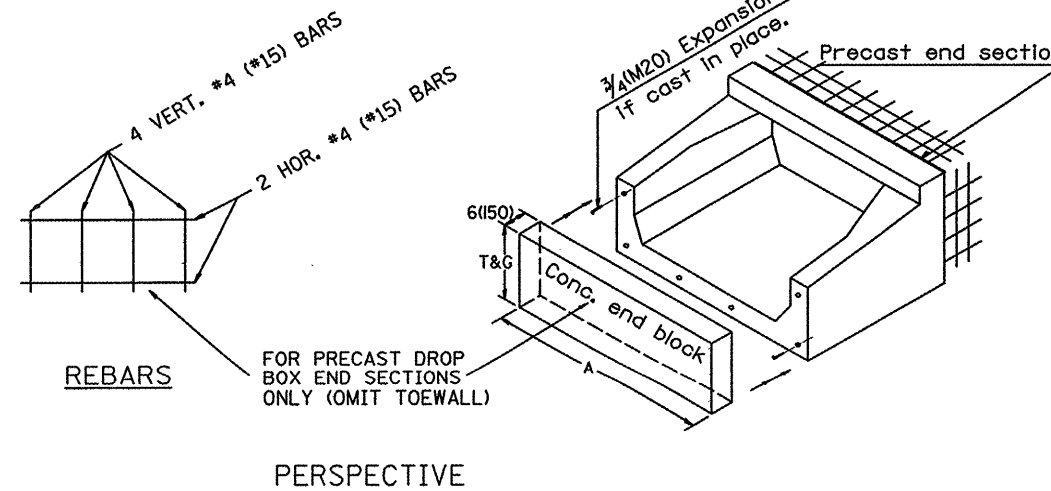
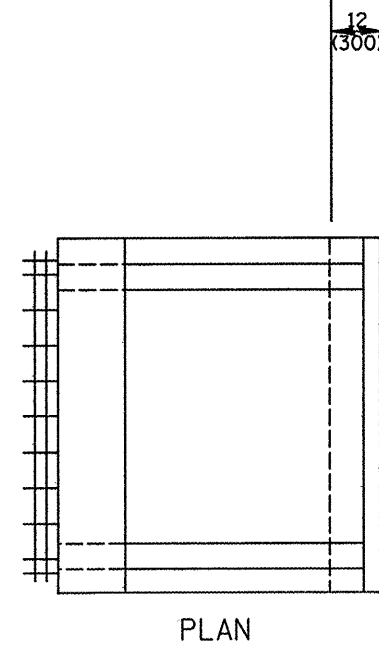


GENERAL NOTES:

1. The Box Culvert Sections shall conform to ASTM C789 for 2' (0.6 m) cover or more. If less than 2' (0.6 m) of cover exists, then ASTM C-850 applies and modify Table 'B' and drawing.
2. The Aggregate shall conform to the requirements of Articles 1003.02 and 1004.02 of the Standard Specifications. The gradation requirements do not apply.
3. The External Sealing Band shall conform to ASTM C 877. The appropriate portions of Articles 550.02(i) and 1057.01 of the Standard Specifications shall apply.
4. Shop plans for the Precast Reinforced Box Culvert Sections, End Sections and Drop Box End Sections shall be submitted in accordance with Article 540.06 of the Standard Specifications.
5. All dimensions shall be verified with the Supplier.

All dimensions are in inches (millimeters) unless otherwise noted.



DESIGNER NOTES:
 1. INSERT DISTRICT SPECIAL PROVISION.
 2. TO BE USED IN CONJUNCTION WITH CONCRETE COLLAR.

PRECAST CONCRETE BOX CULVERTS (SPECIAL), END SECTION (SPECIAL), & DROP BOX END SECTIONS (SPECIAL)

DATE	REVISIONS	BY
1-1-97	RENUM. J-12.08 AND J-12.09, NEW FORMAT, METRICS, NEW REVISION BOX, NOTES.	T.P.
5-1-97	CORRECT TITLE & GEN. NOTES	J.A.
6-17-99	CORRECT DIMENSIONS	J.A.
10-16-06	REVISED TO 2007 SPEC.	M.A.

FILE NAME = ...District Standards 500.dgn	USER NAME = Plotted by flin	DESIGNED -	REVISED -	STATE OF ILLINOIS DEPARTMENT OF TRANSPORTATION	DISTRICT STANDARDS US 150 OVER LITTLE FARM CREEK	F.A.U. RTE. 6757	SECTION (105B) BR-2, (105B) BR-3	COUNTY TAZEWELL	TOTAL SHEETS 108	SHEET NO. 133	
PLOT SCALE = 100,0000' / IN.	DRAWN -	REVISIED -	SCALE: N.T.S.			SHEET NO. OF SHEETS	STA. TO STA.	FED. ROAD DIST. NO.	ILLINOIS FED. AID PROJECT	CONTRACT NO. 68086	
PLOT DATE = 10/7/2008	CHECKED -	REVISIED -									
	DATE -	REVISIED -									