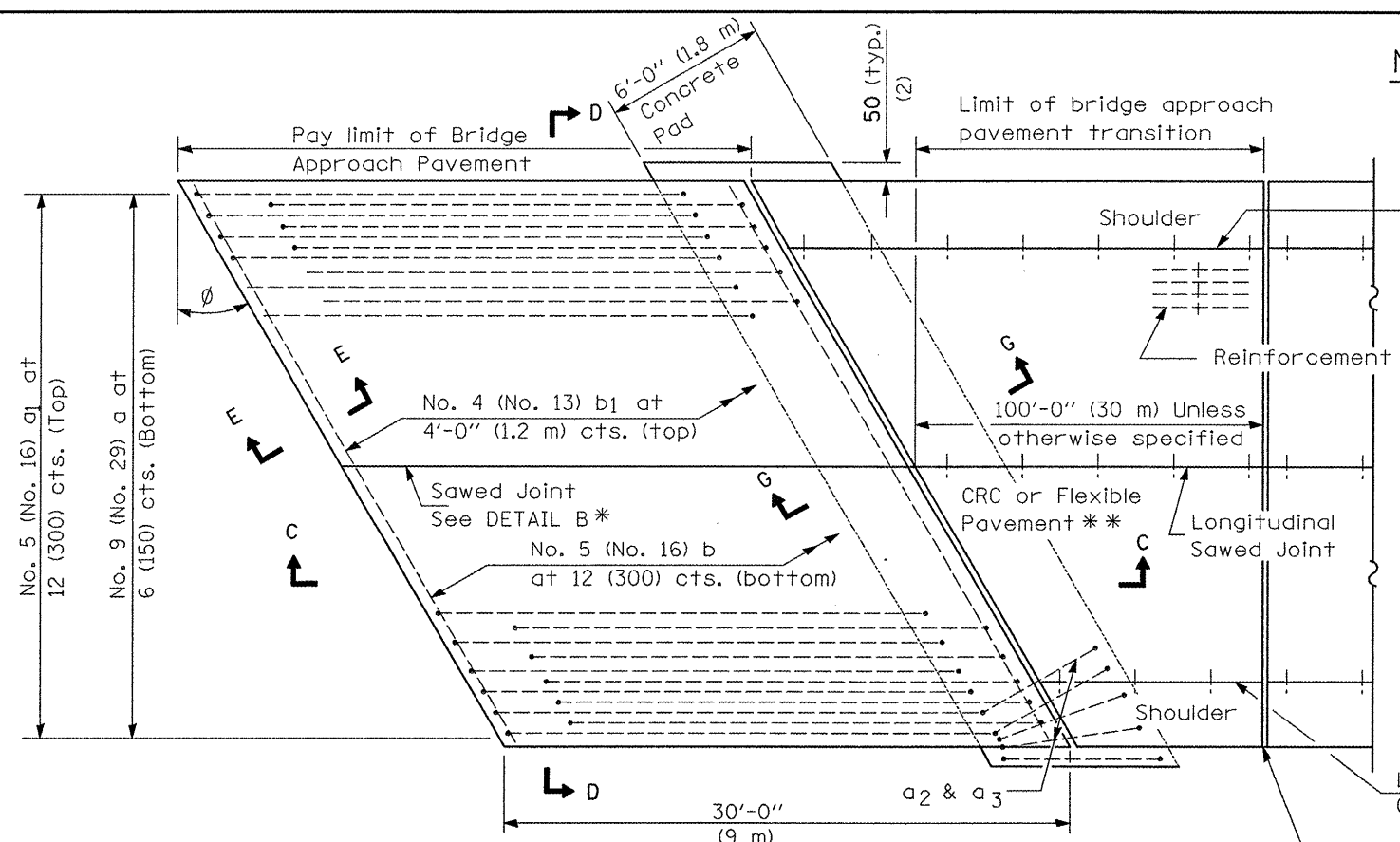
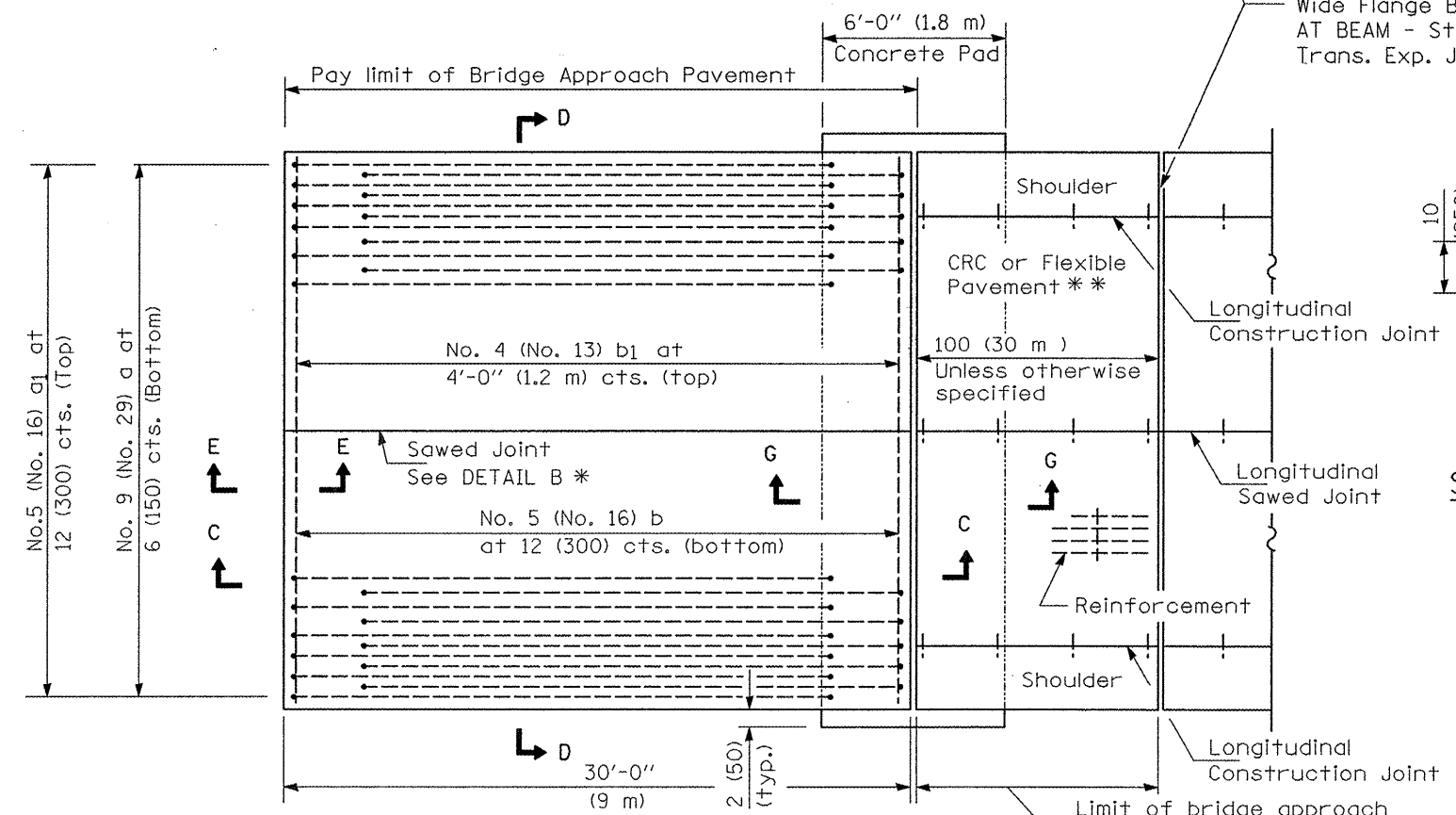


**NEW CONSTRUCTION**

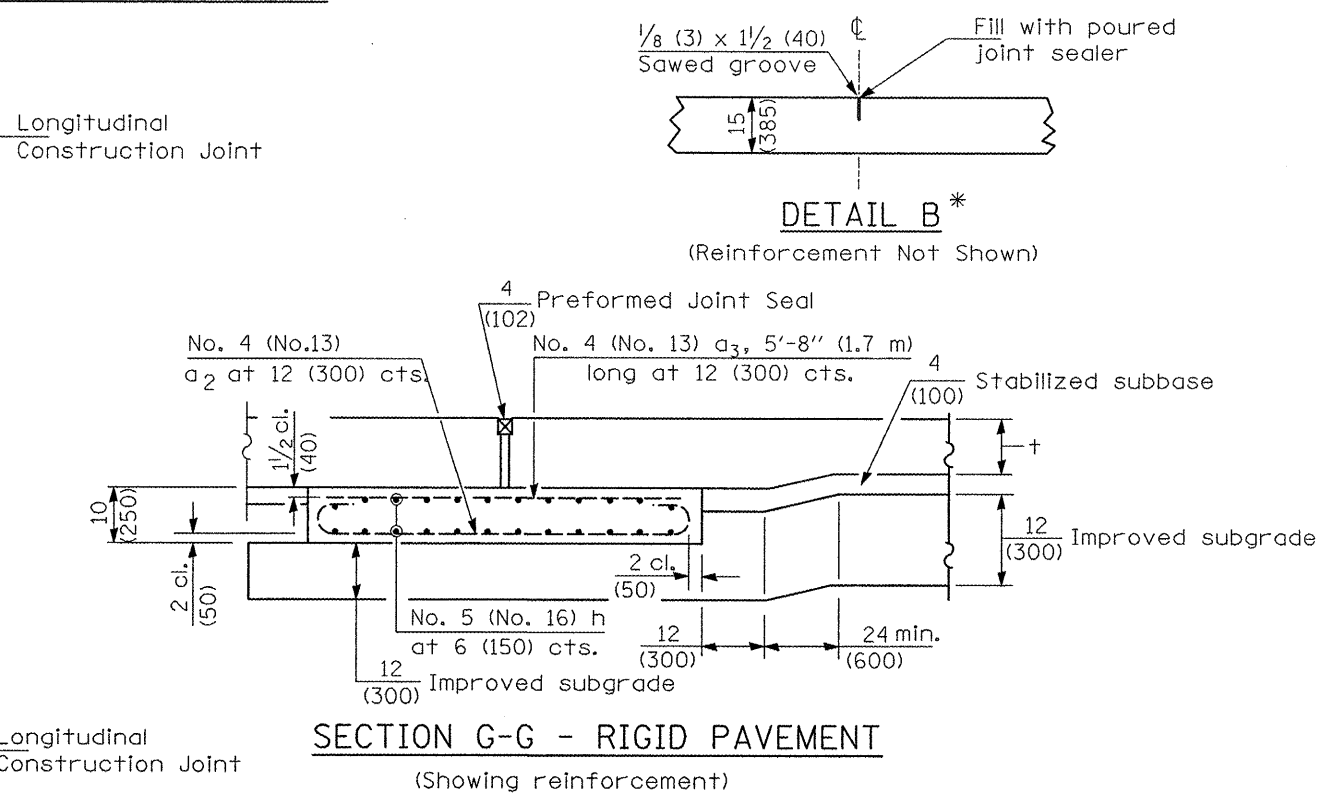


**PLAN - WITH SKEW**



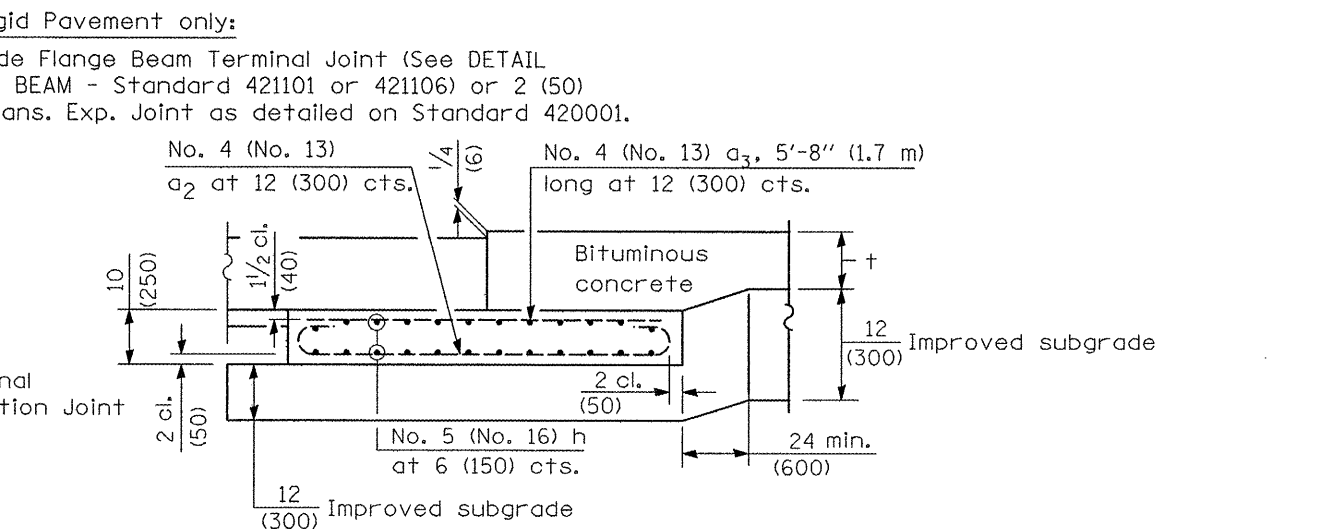
**PLAN - WITHOUT SKEW**

\* Saw  $\perp$  or lane edge if poured two or more lane widths at a time.  
 \*\* Omit Reinforcement, tie bars and Long. sawed Jt. for Flexible Pavement.



**SECTION G-G - RIGID PAVEMENT**

(Showing reinforcement)



**SECTION G-G - FLEXIBLE PAVEMENT**

(Showing reinforcement)

**GENERAL NOTES**

THICKNESS-"+"=Thickness of Pavement.  
 See Standard 421001 for reinforcement details not shown.  
 See Standard 420001 for joint details not shown.  
 All dimensions are in inches (millimeters) unless otherwise shown.

FILE NAME = ...approach detail.dgn	USER NAME = Plotted by flin	DESIGNED -	REVISED -	<b>STATE OF ILLINOIS DEPARTMENT OF TRANSPORTATION</b>	<b>BRIDGE APPROACH PAVEMENT DETAIL US 150 OVER LITTLE FARM CREEK</b>	F.A.U. RTE.	SECTION	COUNTY	TOTAL SHEETS	SHEET NO.	
	PLOT SCALE = 40.0000' / IN.	DRAWN -	REVISED -			6757	(105B) BR-2, (105B) BR-3	TAZEWELL	133A	133	
	PLOT DATE = 10/15/2008	CHECKED -	REVISED -			CONTRACT NO. 68086					
		DATE -	REVISED -			FED. ROAD DIST. NO. ILLINOIS FED. AID PROJECT					