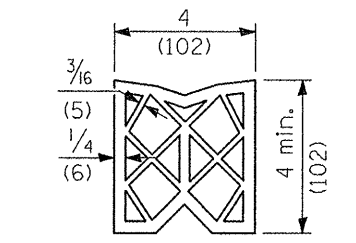
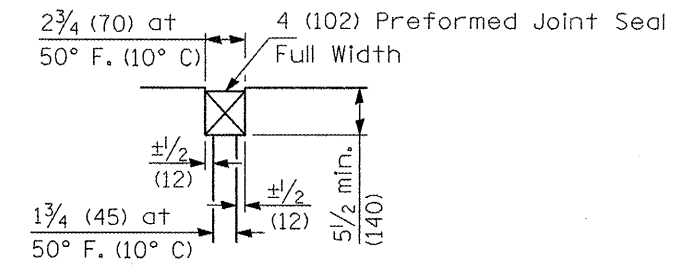


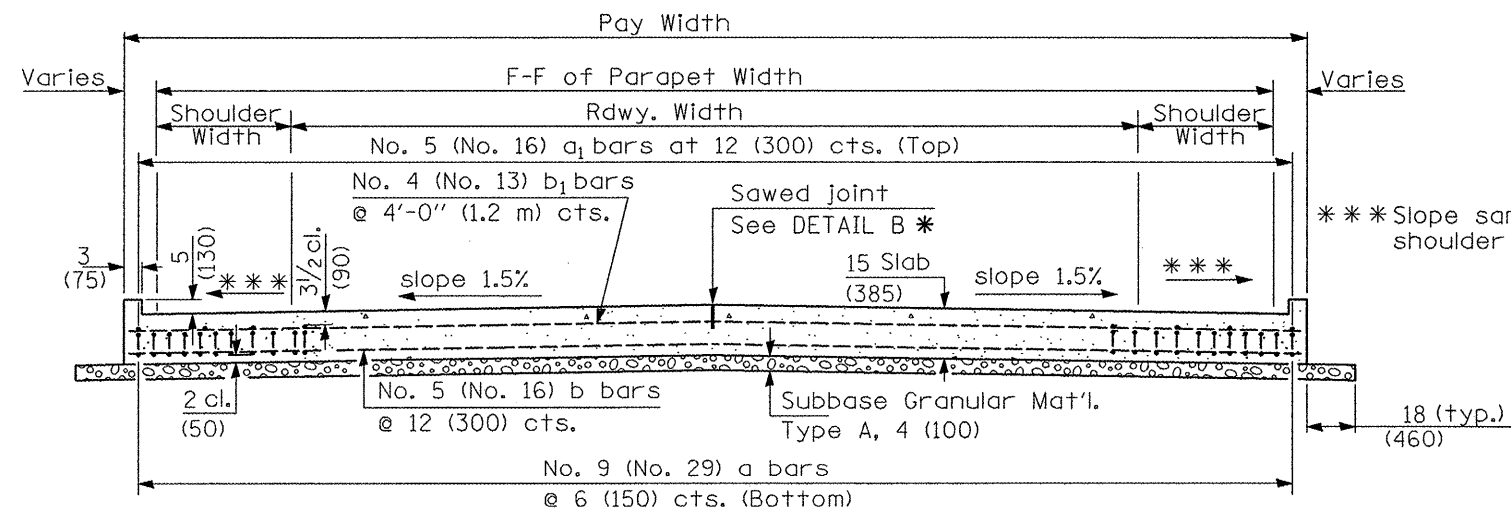
① Stagger No. 9 (No. 29) a bars as shown on plan - full width



PREFORMED JOINT SEAL

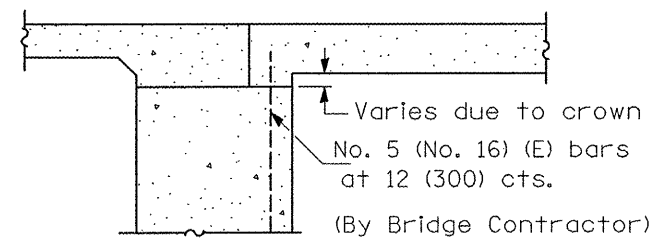


DETAIL A



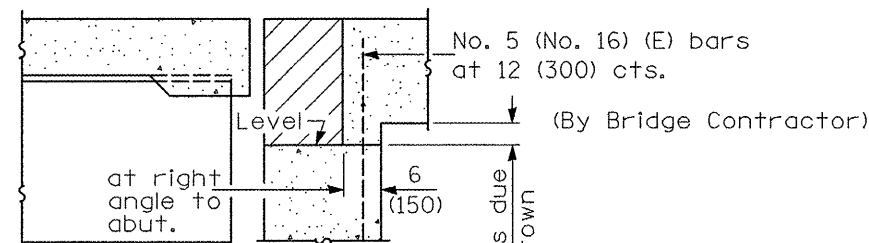
SECTION D-D

(See Plan for Dimensions not shown)



SECTION E-E

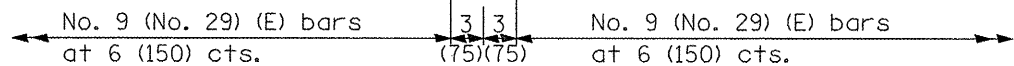
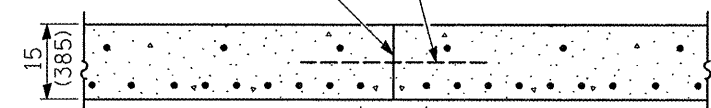
(Integral Abutments)



SECTION E-E

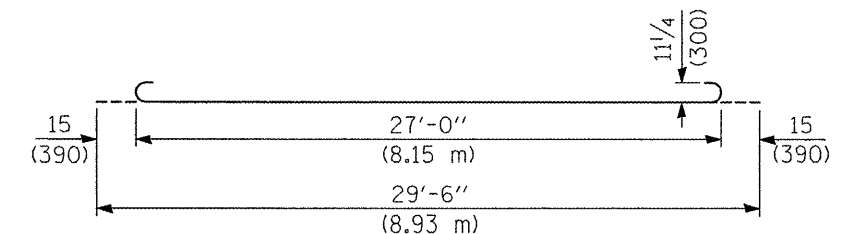
(Jointed Abutments)

Longitudinal Construction Joint in accordance with details shown on Standard 420001.

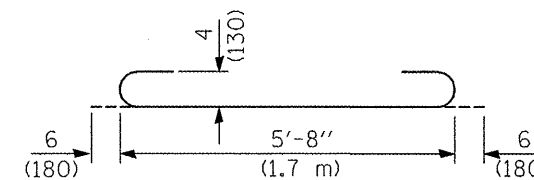


OPTIONAL LONGITUDINAL CONSTRUCTION JOINT

As approved by the Engineer, the Contractor may elect to reduce the widths of pour by use of the Optional Longitudinal Construction Joint shown. Joints shall be located at the edge of a traffic lane.



BAR a



BAR a2

DESIGN STRESSES

fy = 60,000 p.s.i. (400 MPa)
f'c = 3,500 p.s.i. (24 MPa)
n = 8.5

STATE OF ILLINOIS
DEPARTMENT OF TRANSPORTATION

BRIDGE APPROACH PAVEMENT DETAIL
US 150 OVER LITTLE FARM CREEK

NOT TO SCALE SHEET NO. 3 OF 4 SHEETS

F.A.U. RTE.	SECTION	COUNTY	TOTAL SHEETS	SHEET NO.
6757	(105B) BR-2, (105B) BR-3	TAZEWELL	133C	133
CONTRACT NO. 68086				
FED. ROAD DIST. NO. ILLINOIS FED. AID PROJECT				

FILE NAME =	USER NAME = Plotted by flin	DESIGNED -	REVISED -
...approach detail.dgn		DRAWN -	REVISED -
		CHECKED -	REVISED -
		DATE -	REVISED -

PLOT SCALE = 48.0000' / IN.
PLOT DATE = 10/15/2008