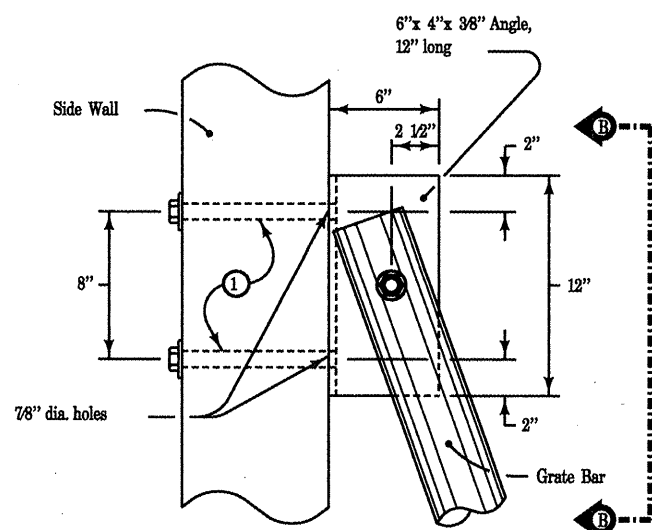
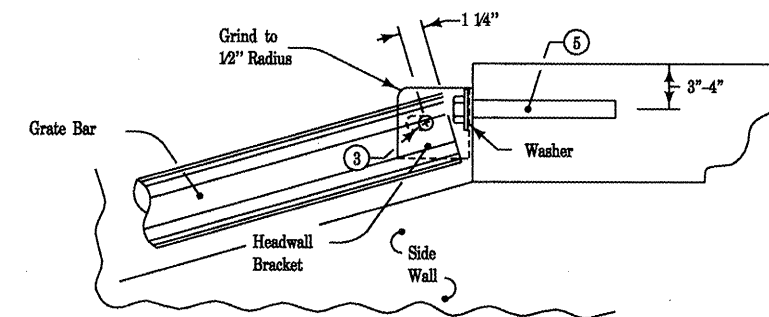


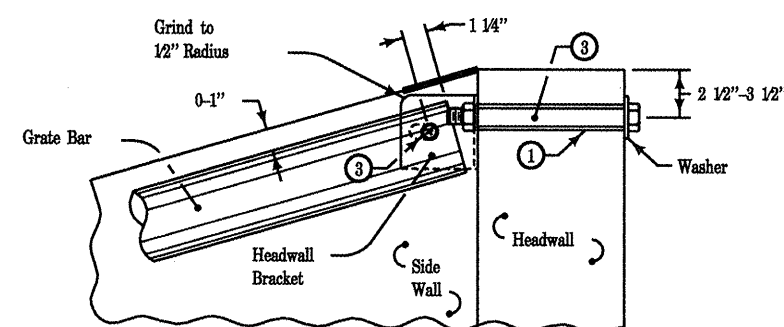
DETAIL 'A'  
TOP VIEW



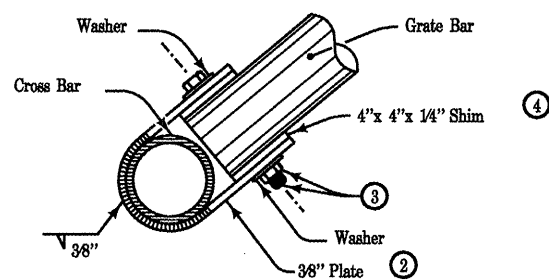
DETAIL 'B'  
TOP VIEW



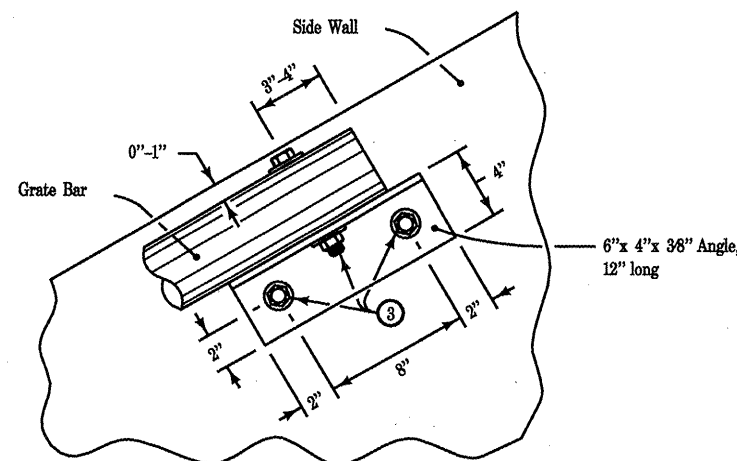
FOR PRECAST END SECTION  
SECTION C-C  
(From Detail Sheet 1 Typical Plan)



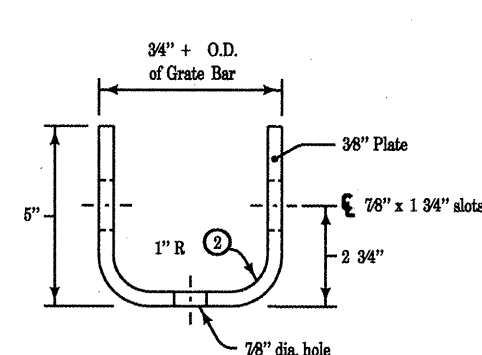
FOR CIP END SECTION  
SECTION C-C  
(From Detail Sheet 1 Typical Plan)



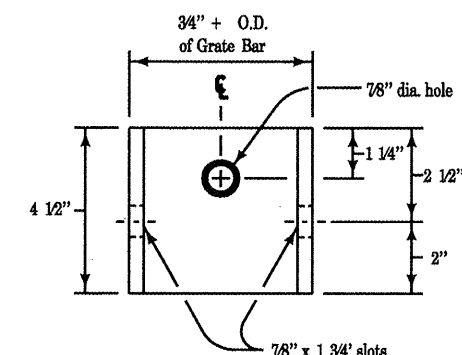
SECTION A-A



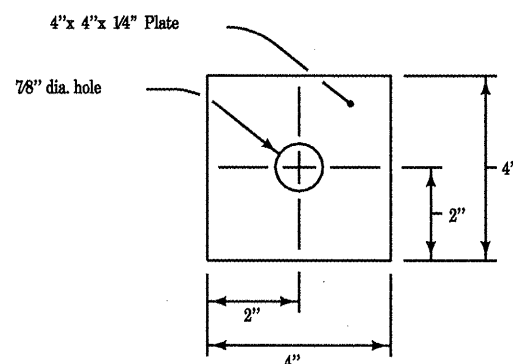
SECTION B-B



HEADWALL BRACKET  
TOP VIEW



HEADWALL BRACKET  
FRONT VIEW



SHIM DETAIL

For additional information,  
see Detail Sheet 1  
Safety Grate Treatment.

- ① Holes are to be made with equipment designed to cut through concrete and reinforcing steel. All holes shall be 7/8 inch diameter.
- ② All bending of plates or strips shall be accomplished without cracking material.
- ③ 3/4 inch bolt, lock nut and washers. All holes shall be 7/8 inch diameter.
- ④ Shim thickness equal to difference in diameters of Grate Bar and Cross Bar.
- ⑤ 3/4 X 5 inch anchor bolt with lock washers.

FILE NAME =	USER NAME = loynedm	DESIGNED -	REVISED -	<b>STATE OF ILLINOIS DEPARTMENT OF TRANSPORTATION</b>	<b>GRATING SPECIAL</b>	FAI	SECTION	COUNTY	TOTAL	SHEET
SYNGEN\DRIFT\STD&PLNS\Squad\sq 1 deta	SI Safety Grate\grate std.dgn	DRAWN -	REVISED -			74	(37-24; 48-24; 25,26) RS-3	HENRY/KNOX	SHEETS	NO.
	PLOT SCALE = 2100.0000 / IN.	CHECKED -	REVISED -			CONTRACT NO. 68220				22
	PLOT DATE = 11/19/2008	DATE -	REVISED -			FED. ROAD DIST. NO. ILLINOIS FED. AID PROJECT				