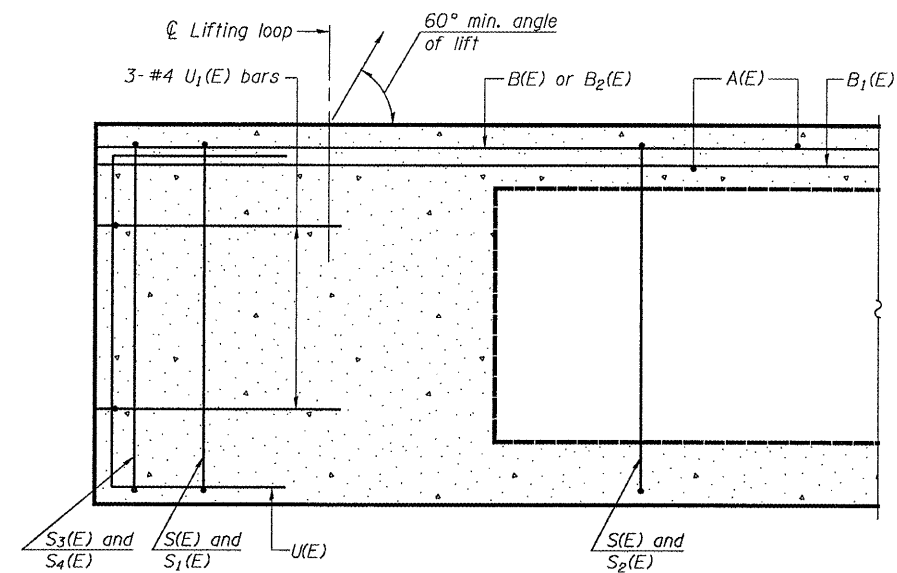
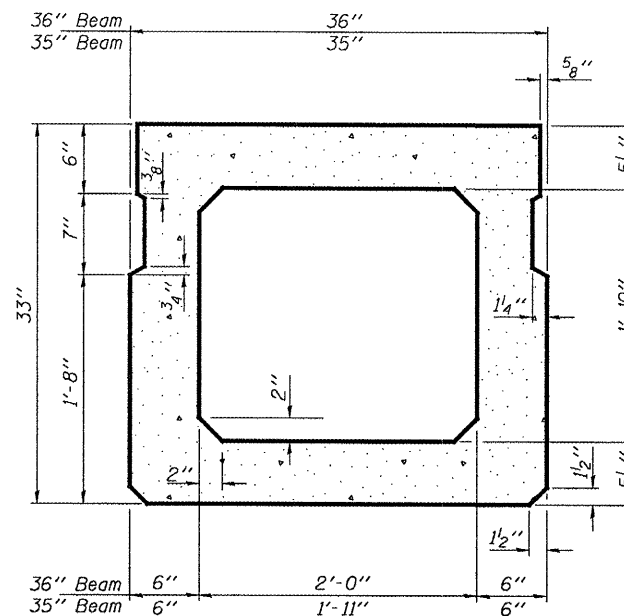


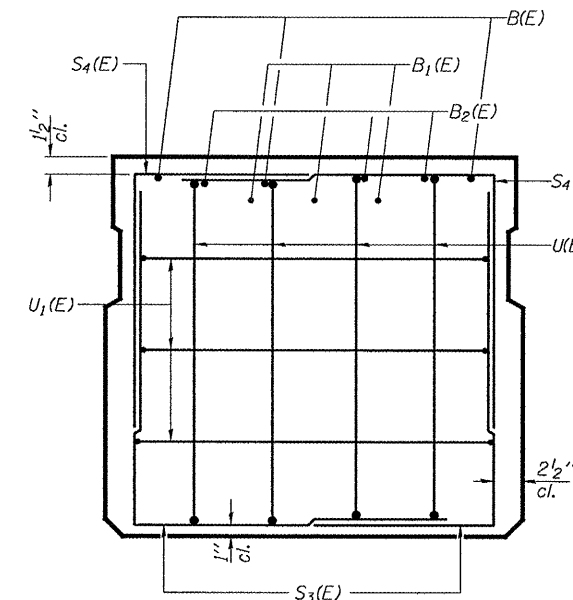
STATE OF ILLINOIS  
DEPARTMENT OF TRANSPORTATION



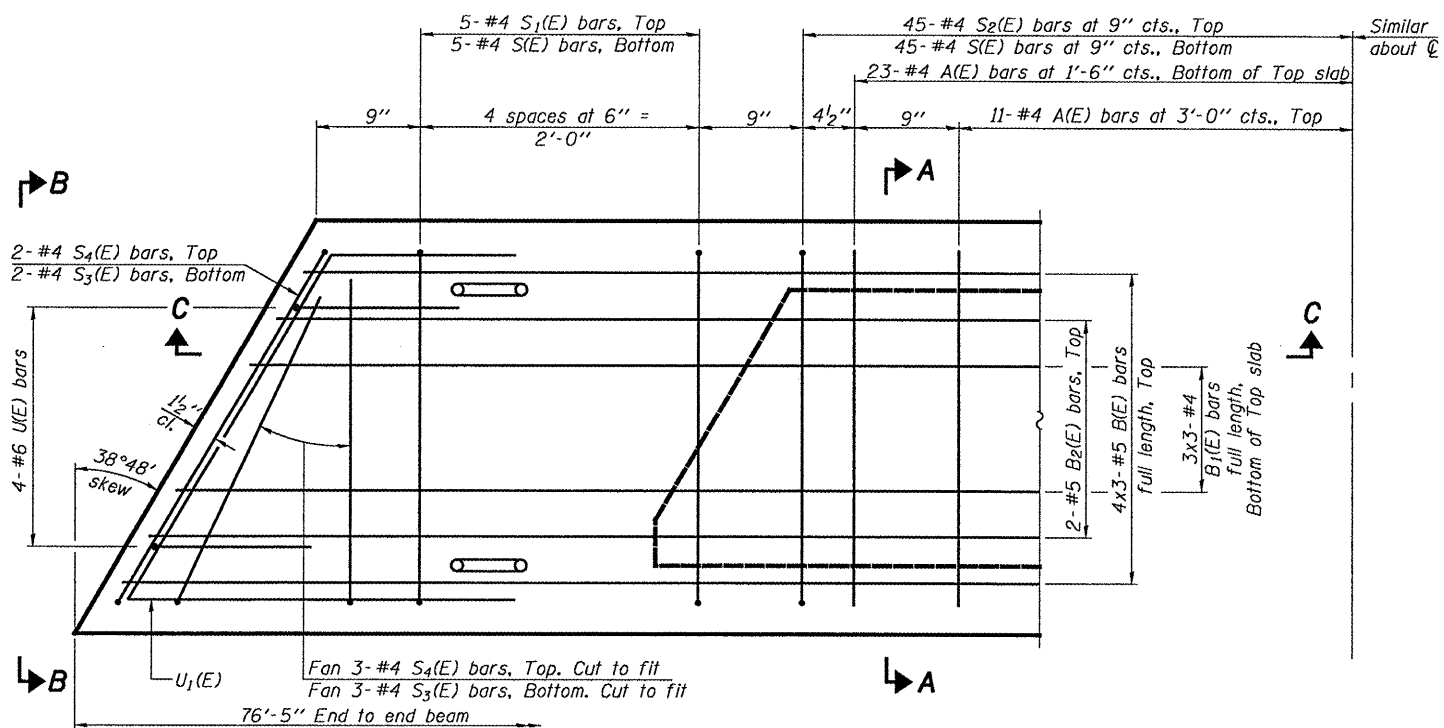
**SECTION C-C**



**SECTION A-A**  
(Showing dimensions)



**VIEW B-B**



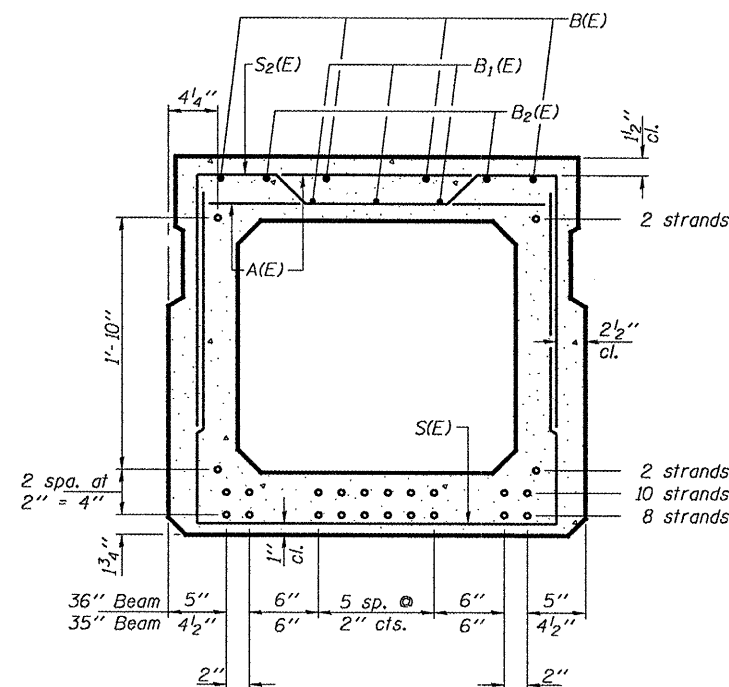
**PLAN VIEW**

**MIN. BAR LAP**

#4 = 1'-8"  
#5 = 2'-2"

Note: Spacing of S(E) and S2(E) bars may be adjusted up to 4" in the immediate area of the transverse tie diaphragms to miss the block outs for the transverse ties.

Bars indicated thus 4 x 3-#5 etc. indicates 4 lines of bars with 3 lengths per line.



**SECTION A-A**

(Showing reinforcement and permissible strand locations)

Note: Place the number of strands specified in each row symmetrically about the centerline of beam in the permissible strand locations shown.

**BAR LIST**  
**ONE 35" BEAM ONLY**  
(For information only)

Bar	No.	Size	Length	Shape
A(E)	68	#4	2'-6"	—
B(E)	12	#5	26'-10"	—
B1(E)	9	#4	26'-6"	—
B2(E)	4	#5	15'-4"	—
S(E)	100	#4	7'-4"	┌
S1(E)	10	#4	6'-2"	┌
S2(E)	90	#4	6'-5"	┌
S3(E)	10	#4	5'-1"	┌
S4(E)	10	#4	4'-6"	┌
U(E)	8	#6	4'-11"	┌
U1(E)	6	#4	7'-7"	┌

**BAR LIST**  
**ONE 36" BEAM ONLY**  
(For information only)

Bar	No.	Size	Length	Shape
A(E)	68	#4	2'-7"	—
B(E)	12	#5	26'-10"	—
B1(E)	9	#4	26'-6"	—
B2(E)	4	#5	15'-4"	—
S(E)	100	#4	7'-5"	┌
S1(E)	10	#4	6'-3"	┌
S2(E)	90	#4	6'-6"	┌
S3(E)	10	#4	5'-1"	┌
S4(E)	10	#4	4'-6"	┌
U(E)	8	#6	5'-0"	┌
U1(E)	6	#4	7'-9"	┌

Note: See sheet 3 of 4 for additional details and Bill of Material.

**BEAM DETAILS**  
**IL ROUTE 97 OVER SPOON RIVER**  
**SN 048-0075**

DESIGNED	AJB
CHECKED	ATH
DRAWN	Kyle M. Steffen
CHECKED	AJB ATH

JANUARY 8, 2009  
EXAMINED *A. Carl Pung*  
ENGINEER OF STRUCTURAL SERVICES  
PASSED *Ralph E. Anderson*  
ENGINEER OF BRIDGES AND STRUCTURES

PD-3336-L 5-16-08

SHEET NO. 2	F.A.P. RTE.	SECTION	COUNTY	TOTAL SHEETS	SHEET NO.
	626	(44-B-1)I	KNOX	13	11
4 SHEETS	CONTRACT NO. 68855				
FED. ROAD DIST. NO.		ILLINOIS	FED. AID PROJECT		