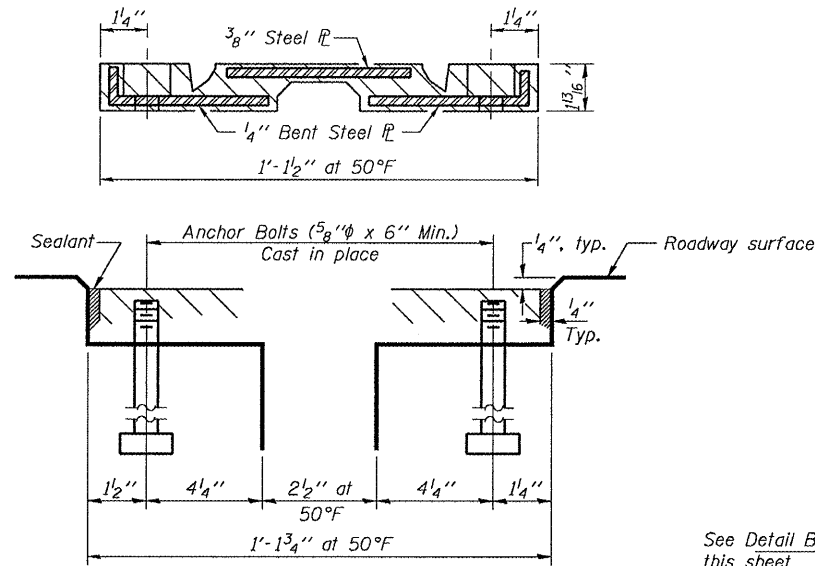
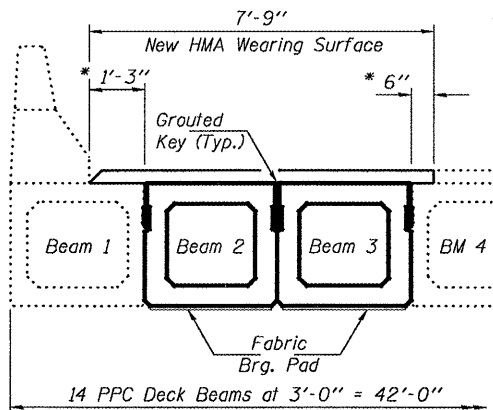


STATE OF ILLINOIS
DEPARTMENT OF TRANSPORTATION



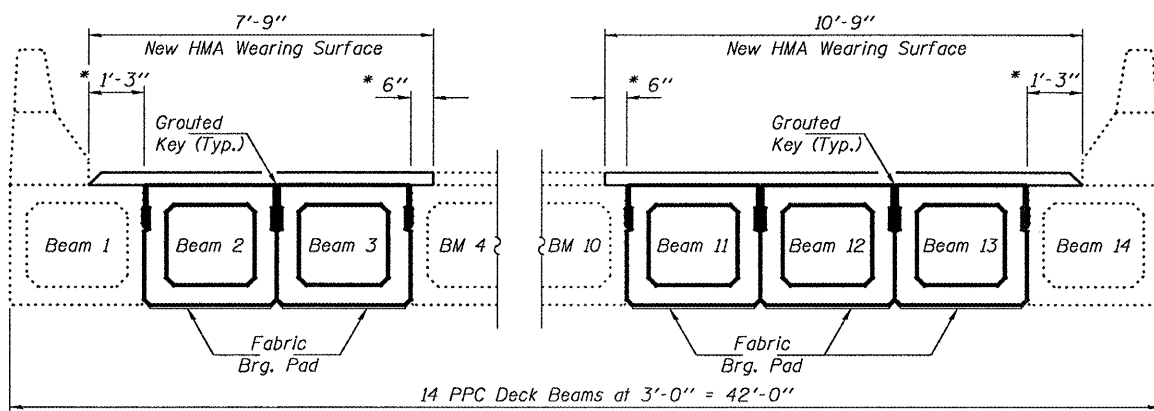
DETAIL C

Existing Neoprene Expansion Joint
FOR INFORMATION ONLY



PARTIAL CROSS SECTION - SPAN 13

* Limits of HMA
Surface Removal

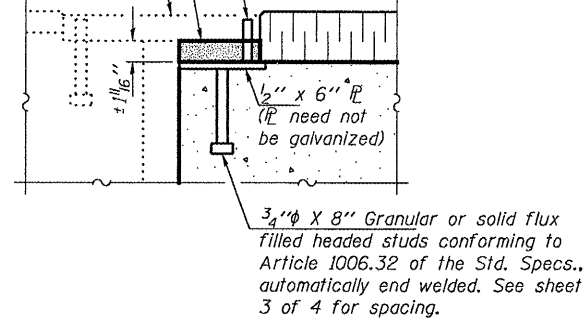


PARTIAL CROSS SECTION - SPAN 14

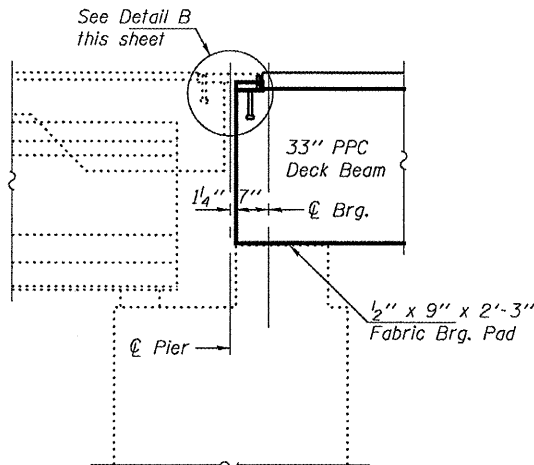
Polymer Concrete
(Cost included with
HMA Surface Course)

Existing Neoprene Exp. Joint
to be removed and reinstalled.
See Detail C. Cost included
with HMA Surface Course.

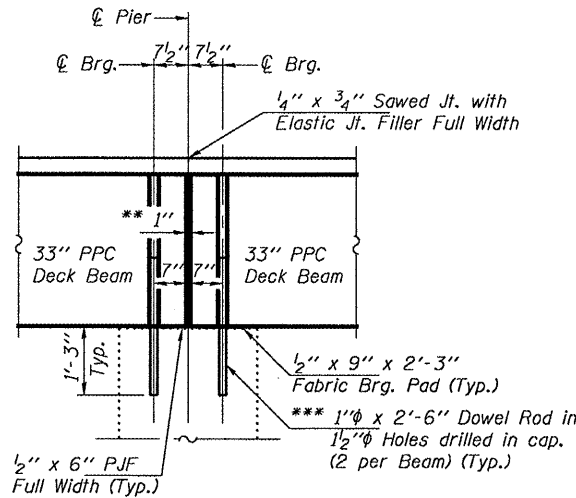
5/8" Threaded Stainless Steel
Anchor Studs automatically end
welded to R. (Space to match
existing Neoprene Joint). Cost
included with HMA Surface Course.



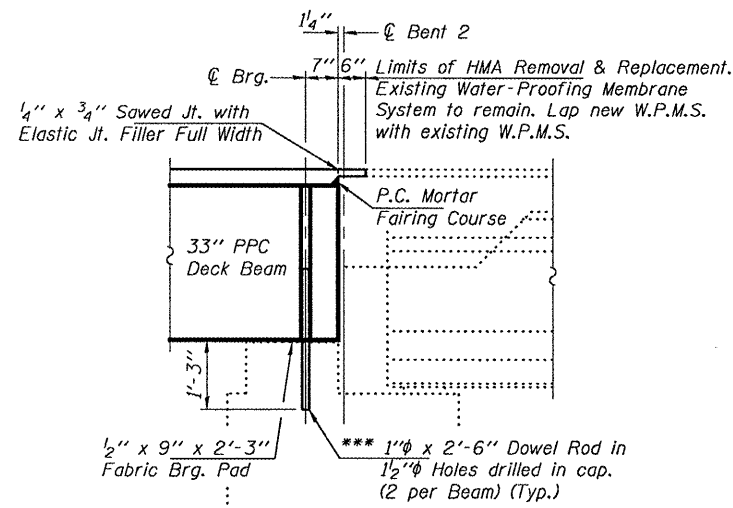
DETAIL B



SECTION THRU PIER 11

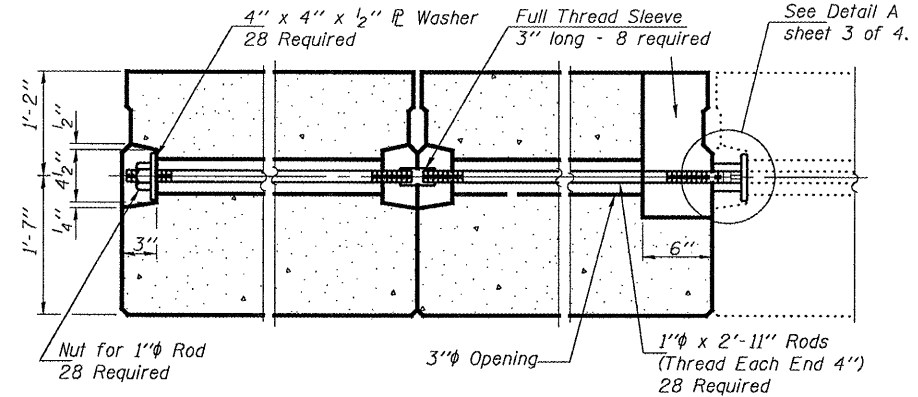


SECTION THRU PIER 12 AT BEAMS 2 & 3



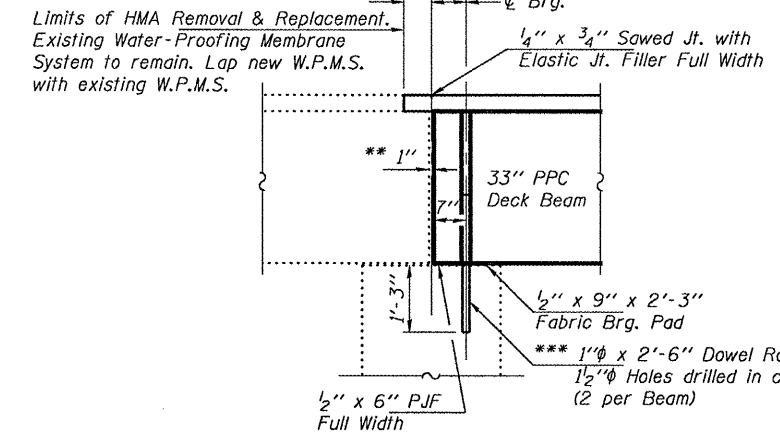
SECTION THRU BENT 2

6" x 6" x 16 1/2" Blockout to be filled with non-shrink grout as
specified in the special provision Concrete Deck Beams (Min.
compressive strength at 7 days = 6,000 psi) after beams have
been installed. Cost shall be included in the cost of Precast
Prestressed Concrete Deck Beams (33" Depth).



TYPICAL TRANSVERSE TIE ASSEMBLY

Limits of HMA Removal & Replacement.
Existing Water-Proofing Membrane
System to remain. Lap new W.P.M.S.
with existing W.P.M.S.



SECTION THRU PIER 12 AT BEAMS 11, 12, & 13

** 1" Joint shall be filled with non-shrink grout. Dimension
may vary to accommodate tolerance in beam lengths.

*** Existing dowel rods are to be burned off, ground flush,
and sealed with epoxy prior to placement of new beams.
Cost included in Removal of Existing PPC Deck Beams.
After beams have been erected holes shall be drilled into
cap and dowel rods placed. Dowel holes shall be filled with
non-shrink grout to top of beam and allowed to cure a
minimum of 24 hours prior to grouting the shear keys.

**REPAIR DETAILS
IL ROUTE 97 OVER SPOON RIVER
SN 048-0075**

DESIGNED	AJB
CHECKED	ATH
DRAWN	Kyle M. Steffen
CHECKED	AJB ATH

JANUARY 8, 2009
EXAMINED *Carl Perry*
ENGINEER OF STRUCTURAL SERVICES
PASSED *Ralph E. Anderson*
ENGINEER OF BRIDGES AND STRUCTURES

SHEET NO. 4 4 SHEETS	F.A.P. RTE. 626	SECTION (44-B-1)I	COUNTY KNOX	TOTAL SHEETS 13	SHEET NO. 13
	CONTRACT NO. 68855			FED. ROAD DIST. NO. ILLINOIS FED. AID PROJECT	