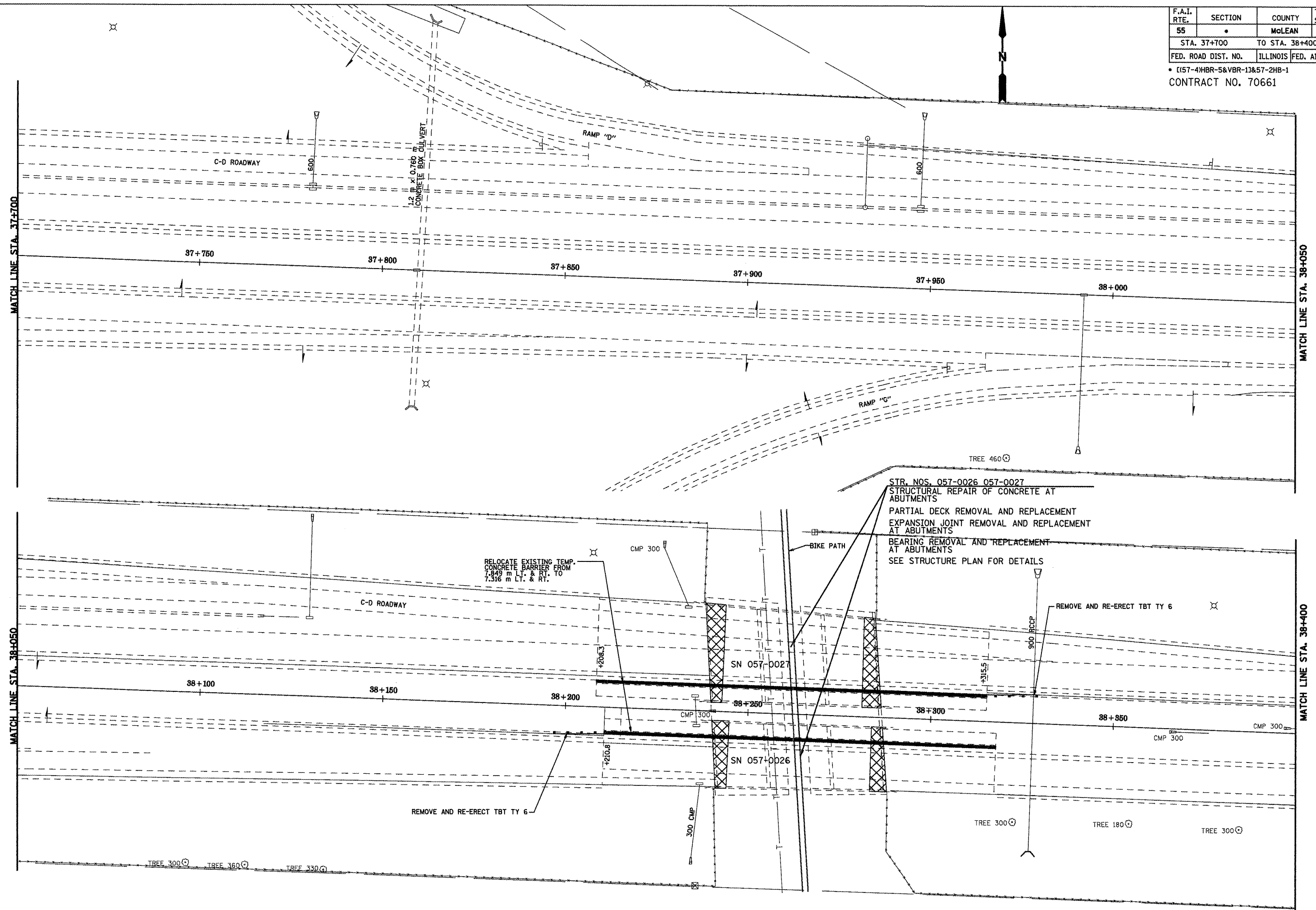


F.A.I. RTE.	SECTION	COUNTY	TOTAL SHEETS	SHEET NO.
55	•	MCLEAN	70	18
STA. 37+700		TO STA. 38+400		
FED. ROAD DIST. NO.		ILLINOIS FED. AID PROJECT		
• [(57-4)HBR-5&VBR-13&57-2HB-1				
CONTRACT NO. 70661				



STR. NOS. 057-0026 057-0027
 STRUCTURAL REPAIR OF CONCRETE AT ABUTMENTS
 PARTIAL DECK REMOVAL AND REPLACEMENT
 EXPANSION JOINT REMOVAL AND REPLACEMENT AT ABUTMENTS
 BEARING REMOVAL AND REPLACEMENT AT ABUTMENTS
 SEE STRUCTURE PLAN FOR DETAILS

RELOCATE EXISTING TEMP. CONCRETE BARRIER FROM 7.849 m L.T. & RT. TO 7.316 m L.T. & RT.

REMOVE AND RE-ERECT TBT TY 6

REMOVE AND RE-ERECT TBT TY 6

 DECK REMOVAL AND REPLACEMENT

DOUBLE PLAN SHEETS
 F.A.I. 55
 MCLEAN COUNTY