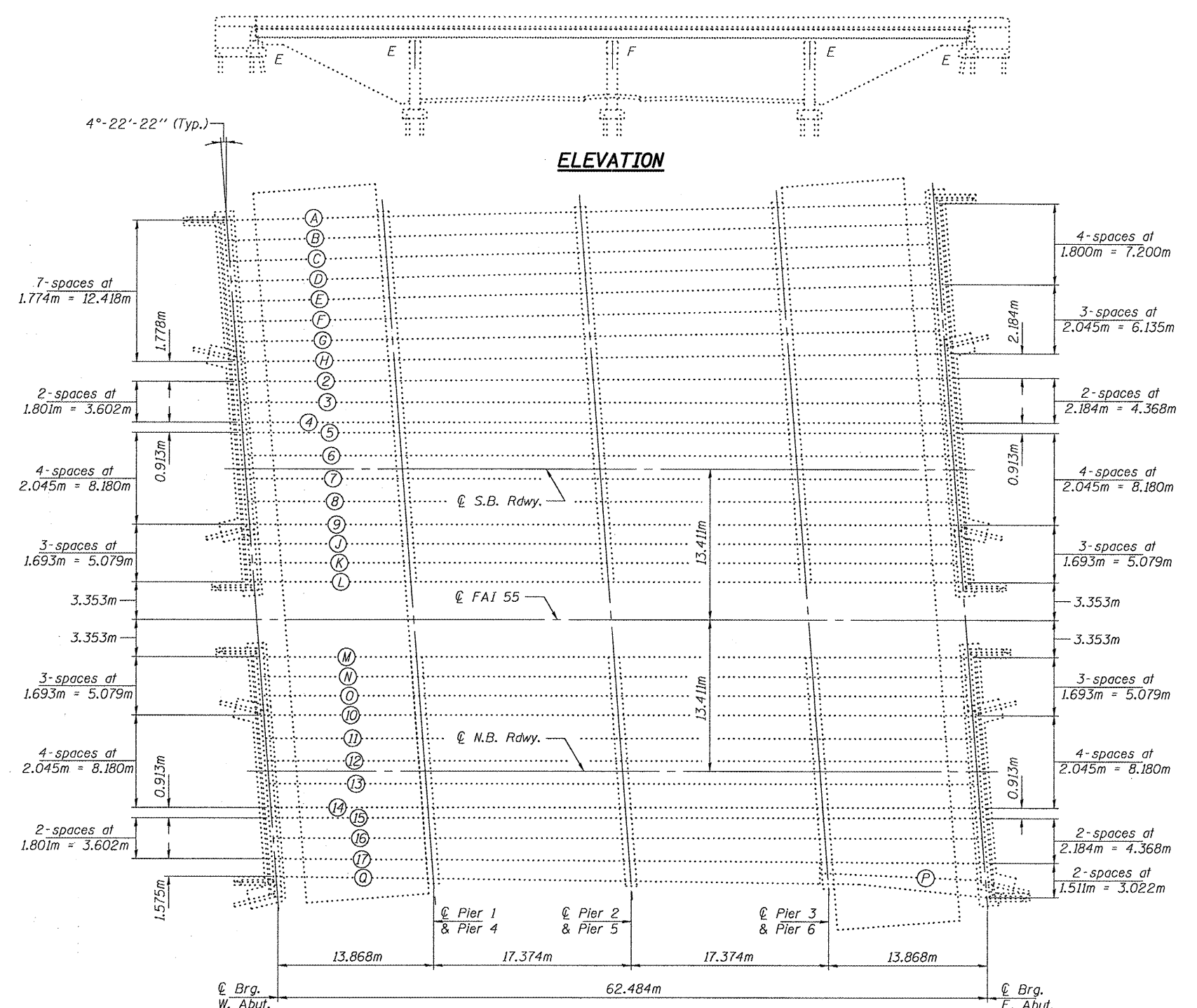
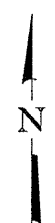


STATE OF ILLINOIS
DEPARTMENT OF TRANSPORTATION



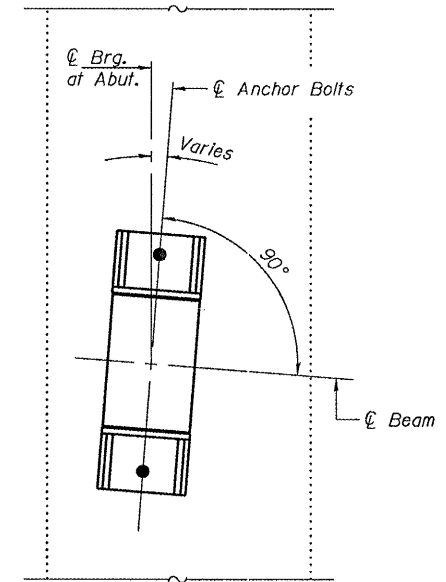
ELEVATION

FRAMING PLAN

Remove and Replace Bearings at Abutments

GENERAL NOTES

All structural steel shall conform to AASHTO Classification M-270 Gr. 250, unless otherwise noted.
 Plan dimensions and details relative to existing plans are subject to nominal construction variations. The Contractor shall field verify existing dimensions and details affecting new construction and make necessary approved adjustments prior to construction or ordering of materials. Such variations shall not be cause for additional compensation for a change in scope of the work, however, the Contractor will be paid for the quantity actually furnished at the unit price bid for the work.
 If the analysis submitted to the Contractor for the jacking/temporary support system to be used shows temporary stiffeners are required to prevent web crippling or buckling, the stiffeners shall be steel and bolted to the web. If stiffeners are not required, hardwood timbers shall be installed tightly between the top and bottom flange to prevent flange rotation.
 The existing structural steel coating contains lead. The Contractor shall take appropriate precautions to deal with the presence of lead on this project.
 Existing structural steel that will be in contact with new structural steel shall be cleaned and painted prior to erection as required by the Special Provision "Cleaning and Painting Contact Surface Areas of Existing Steel Structures".
 All structural steel shall be shop painted with the inorganic zinc rich primer per AASHTO M300, Type I. Cost included with Furnishing and Erecting Structural Steel.
 All dimensions shown are in millimeters (mm) unless otherwise noted.



ANCHOR BOLT LOCATION
(Typical All Beams)

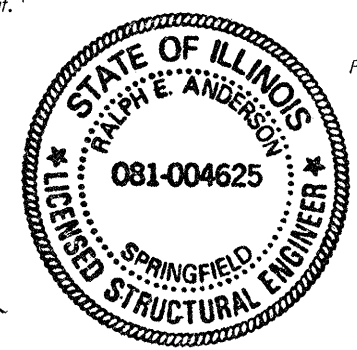
BILL OF MATERIAL

ITEM	UNIT	TOTAL
Furnishing & Erecting Structural Steel	kg	3010
Elastomeric Bearing Assembly, Type II	Each	63
Jack and Remove Existing Bearings	Each	63
Anchor Bolts, M24	Each	126

**BEARING REPLACEMENT
PLAN AND ELEVATION
F.A.I. 55 OVER U.S. RTE. 51
SN 057-0024(NB) & 0025(SB)**

DESIGNED	<i>Kyle M. Steffen</i>
CHECKED	<i>Adrian T. Holloway</i>
DRAWN	<i>Kyle M. Steffen</i>
CHECKED	<i>ABB ATH</i>

NOVEMBER 18, 2008	EXAMINED	<i>Ralph E. Anderson</i>
	PASSED	<i>Ralph E. Anderson</i>



EXPIRES 11-30-2010

SHEET NO. 1 3 SHEETS	F.A.I. RTE. 55	SECTION (57-4)HBR-5 RVBR-1 R57-2HB-1	COUNTY McLEAN	TOTAL SHEETS 70	SHEET NO. 49
	FED. ROAD DIST. NO. ILLINOIS FED. AID PROJECT			CONTRACT NO. 70661	