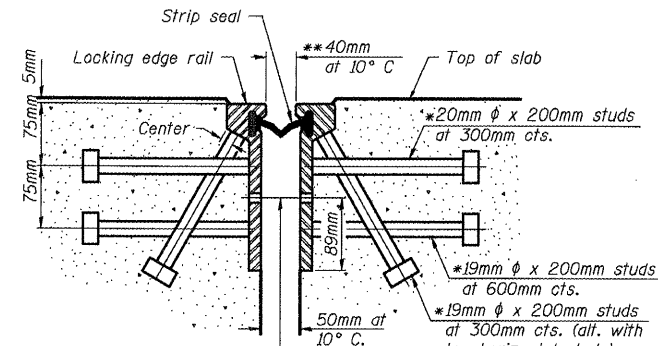


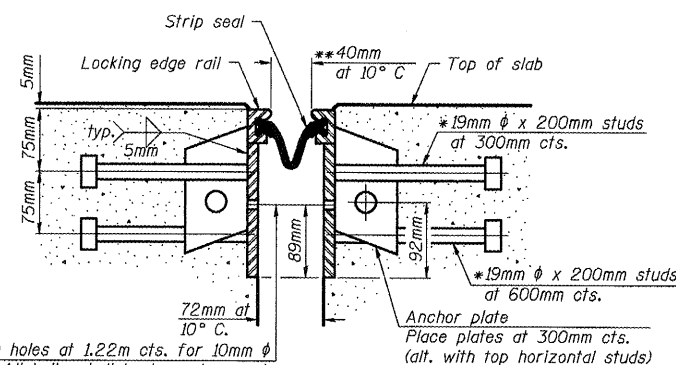
ROUTE NO.	DISTRICT	COUNTY	SHEET NO.	TOTAL SHEETS
FAI 55	•	MCLEAN	70	65
SHEET NO. 14				
14 SHEETS				

* Granular or solid flux filled headed studs conforming to Article 1006.32 of the Std. Specs., automatically end welded.

** When joint is fixed, dimension is set at 40mm.



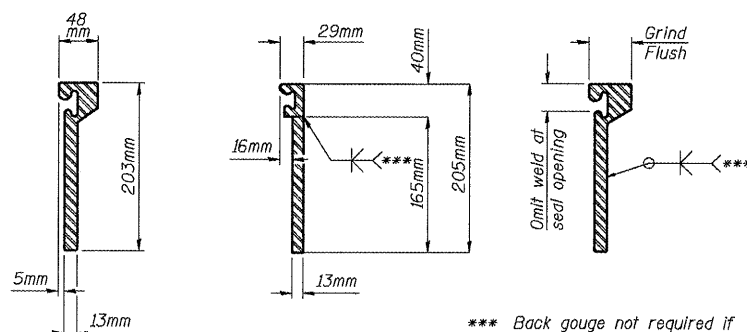
12mm ϕ holes at 1.22m cts. for 10mm ϕ bolts. All bolts shall be burned, sawed, or chipped off flush with the plates after forms are removed, typ.



12mm ϕ holes at 1.22m cts. for 10mm ϕ bolts. All bolts shall be burned, sawed, or chipped off flush with the plates after forms are removed, typ.

SECTION THRU ROLLED RAIL JOINT

SECTION THRU WELDED RAIL JOINT

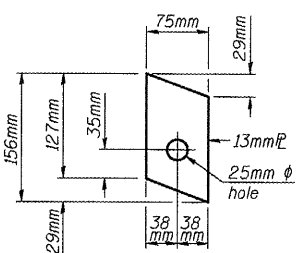


ROLLED (EXTRUDED) RAIL WELDED RAIL

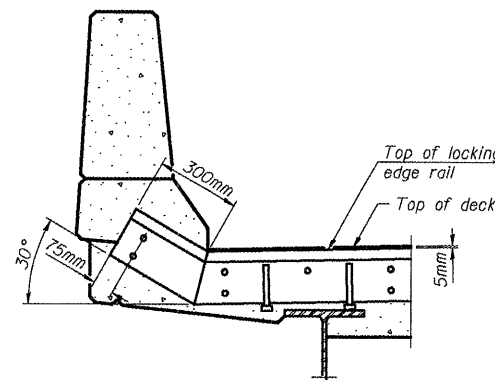
*** Back gouge not required if complete joint penetration is verified by mock-up.

LOCKING EDGE RAIL SPLICE

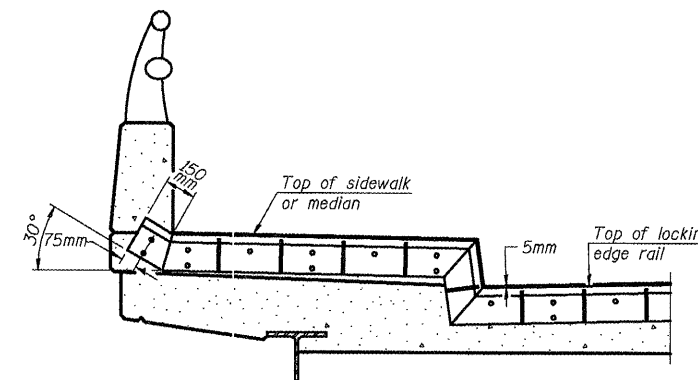
The inside of the locking edge rail groove shall be free of weld residue.



ANCHOR PLATE (for welded rail)



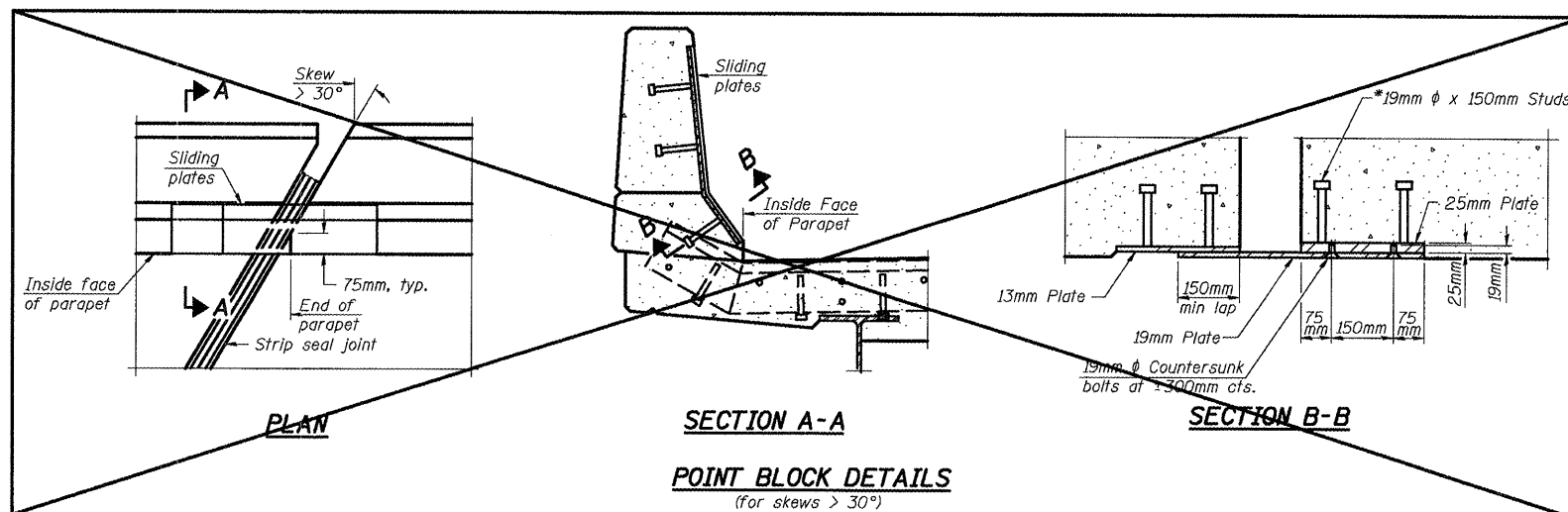
AT PARAPET



AT SIDEWALK OR MEDIAN

Shorter plates with a single row of studs at 300mm cts. may be necessary on medians which are shallower than 230mm. See manufacturer's recommendation.

TYPICAL END TREATMENTS



BILL OF MATERIAL

Item	Unit	Total
Preformed Joint Strip Seal	Meter	87.3

**PREFORMED JOINT STRIP SEAL
F.A.I. 55 OVER CONSTITUTION TRAIL
MCLEAN COUNTY
SN 057-0026 (NB)
SN 057-0027 (SB)
STA. 38+263.167**

DESIGNED	JDA	200
CHECKED	JKC	EXAMINED
DRAWN	NQ	PASSED
CHECKED	JDA	ENGINEER OF BRIDGES AND STRUCTURES