

PARCEL NO. 6144111
DOUGLAS & MARIE ANDERSON

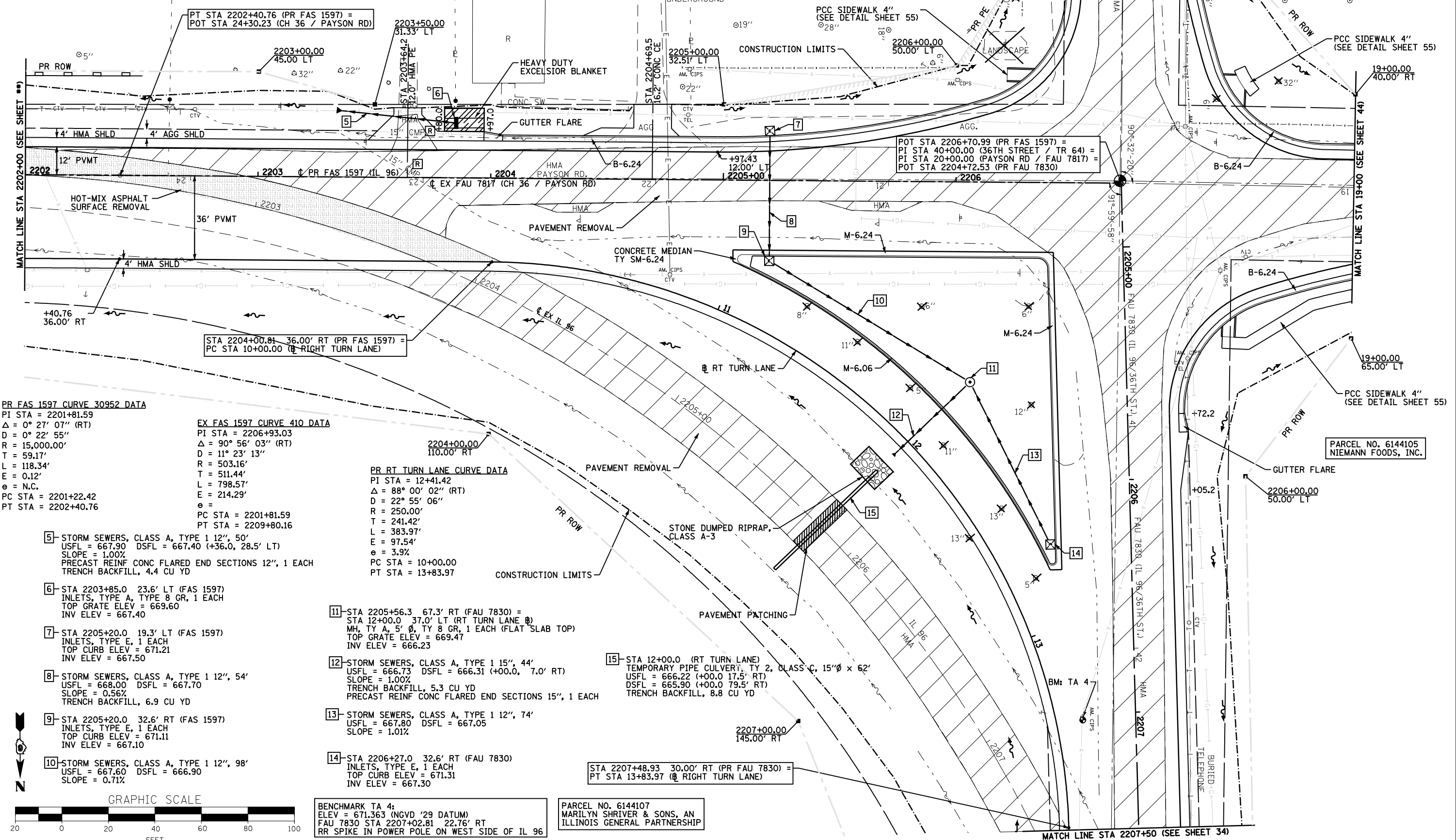
PARCEL NO. 6144112
RONALD AND BOBBI JO SPARROW

TOWN OF MELROSE

PARCEL NO. 6144113
MELROSE CHAPEL UNITED METHODIST CHURCH

PARCEL NO. 6144115
JONATHAN AND LORI L. TUTTLE

PARCEL NO. 6144105
NIEMANN FOODS, INC.



PR FAS 1597 CURVE 30952 DATA
 PI STA = 2201+81.59
 $\Delta = 0^\circ 27' 07''$ (RT)
 $D = 0^\circ 22' 55''$
 $R = 15,000.00'$
 $T = 59.17'$
 $L = 118.34'$
 $E = 0.12'$
 $e = N.C.$
 PC STA = 2201+22.42
 PT STA = 2202+40.76

EX FAS 1597 CURVE 410 DATA
 PI STA = 2206+93.03
 $\Delta = 90^\circ 56' 03''$ (RT)
 $D = 11^\circ 23' 13''$
 $R = 503.16'$
 $T = 511.44'$
 $L = 798.57'$
 $E = 214.29'$
 $e =$
 PC STA = 2201+81.59
 PT STA = 2209+80.16

PR RT TURN LANE CURVE DATA
 PI STA = 12+41.42
 $\Delta = 88^\circ 00' 02''$ (RT)
 $D = 22^\circ 55' 06''$
 $R = 250.00'$
 $T = 241.42'$
 $L = 383.97'$
 $E = 97.54'$
 $e = 3.9\%$
 PC STA = 10+00.00
 PT STA = 13+83.97

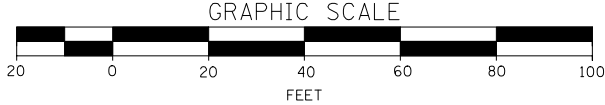
- 5- STORM SEWERS, CLASS A, TYPE 1 12", 50'
USFL = 667.90 DSFL = 667.40 (+36.0, 28.5' LT)
SLOPE = 1.00%
PRECAST REINF CONC FLARED END SECTIONS 12", 1 EACH
TRENCH BACKFILL, 4.4 CU YD
- 6- STA 2203+85.0 23.6' LT (FAS 1597)
INLETS, TYPE A, TYPE 8 GR, 1 EACH
TOP GRATE ELEV = 669.60
INV ELEV = 667.40
- 7- STA 2205+20.0 19.3' LT (FAS 1597)
INLETS, TYPE E, 1 EACH
TOP CURB ELEV = 671.21
INV ELEV = 667.50
- 8- STORM SEWERS, CLASS A, TYPE 1 12", 54'
USFL = 668.00 DSFL = 667.70
SLOPE = 0.56%
TRENCH BACKFILL, 6.9 CU YD
- 9- STA 2205+20.0 32.6' RT (FAS 1597)
INLETS, TYPE E, 1 EACH
TOP CURB ELEV = 671.11
INV ELEV = 667.10
- 10- STORM SEWERS, CLASS A, TYPE 1 12", 98'
USFL = 667.60 DSFL = 666.90
SLOPE = 0.71%

- 11- STA 2205+56.3 67.3' RT (FAU 7830) =
STA 12+00.0 37.0' LT (RT TURN LANE @)
MH, TY A, 5' Ø, TY 8 GR, 1 EACH (FLAT SLAB TOP)
TOP GRATE ELEV = 669.47
INV ELEV = 666.23
- 12- STORM SEWERS, CLASS A, TYPE 1 15", 44'
USFL = 666.73 DSFL = 666.31 (+00.0, 7.0' RT)
SLOPE = 1.00%
TRENCH BACKFILL, 5.3 CU YD
PRECAST REINF CONC FLARED END SECTIONS 15", 1 EACH
- 13- STORM SEWERS, CLASS A, TYPE 1 12", 74'
USFL = 667.80 DSFL = 667.05
SLOPE = 1.01%
- 14- STA 2206+27.0 32.6' RT (FAU 7830)
INLETS, TYPE E, 1 EACH
TOP CURB ELEV = 671.31
INV ELEV = 667.30

STA 2207+48.93 30.00' RT (PR FAU 7830) =
PT STA 13+83.97 @ RIGHT TURN LANE

BENCHMARK TA 4:
ELEV = 671.363 (NGVD '29 DATUM)
FAU 7830 STA 2207+02.81 22.76' RT
RR SPIKE IN POWER POLE ON WEST SIDE OF IL 96

PARCEL NO. 6144107
MARILYN SHRIVER & SONS, AN
ILLINOIS GENERAL PARTNERSHIP



FILE NAME =	USER NAME = laughlinr1
es:\pwwork\pwwdot\LAUGHLINRL\0114681\01\PLAN03.dgn	
PLOT SCALE = 40.0000' / IN.	
PLOT DATE = Dec-12-2008 02:52:36PM	

DESIGNED -	REVISED -
DRAWN -	REVISED -
CHECKED -	REVISED -
DATE -	REVISED -

**STATE OF ILLINOIS
DEPARTMENT OF TRANSPORTATION**

PLAN VIEW - FAS 1597 / FAU 7830 (IL 96)

SCALE: 1"=20' SHEET NO. 5 OF 19 SHEETS STA. 2202+00 TO STA. 2202+00

F.A. RTE.	SECTION	COUNTY	TOTAL SHEETS	SHEET NO.
	(11N)	ADAMS	117	31
- FAS 1597 & FAU 7830		CONTRACT NO. 72817		
FED. ROAD DIST. NO. ILLINOIS FED. AID PROJECT				