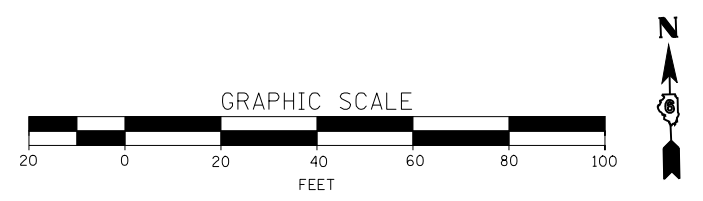
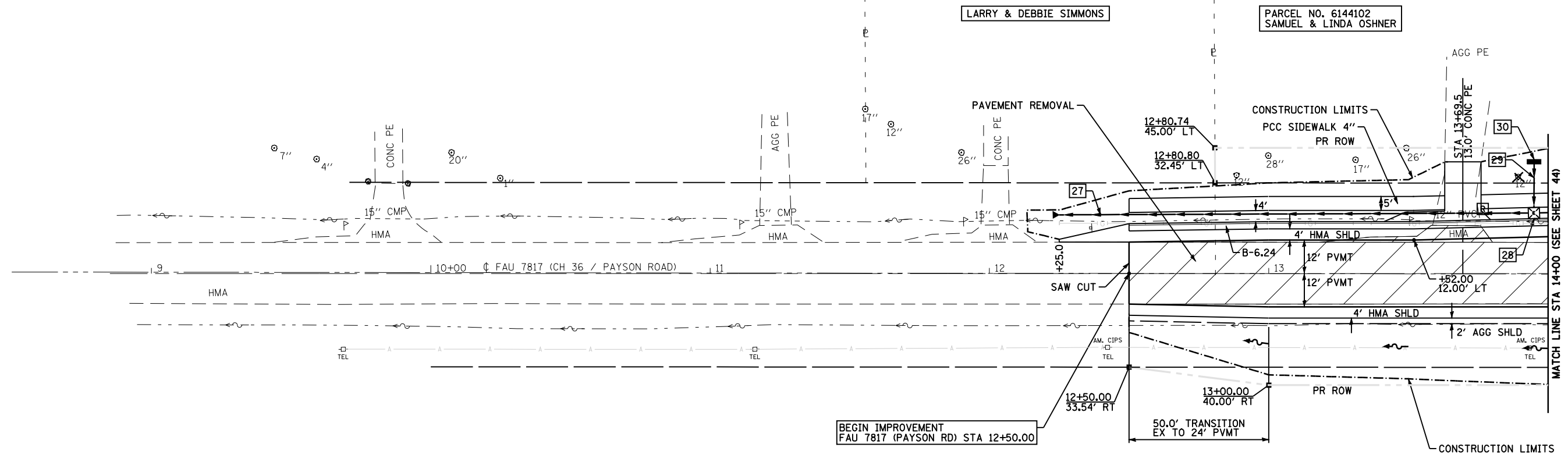


- 27- STORM SEWERS, CLASS A, TYPE 1 18", 168'
USFL = 659.79 DSFL = 658.40 (+25.0, 21.0' LT)
SLOPE = 0.83%
TRENCH BACKFILL, 28.2 CU YD
PRECAST REINF CONC FLARED END SECTIONS 18", 1 EACH
- 28- STA 13+95.0 19.7' LT
INLETS, TYPE E, 1 EACH
TOP CURB ELEV = 664.13
INV ELEV = 659.29
- 29- STORM SEWERS, CLASS A, TYPE 1 12", 16'
USFL = 660.15 DSFL = 659.99
SLOPE = 1.00%
TRENCH BACKFILL, 1.7 CU YD
- 30- STA 13+95.0 40.0' LT
INLETS, TYPE A, TY 8 GR, 1 EACH
TOP GRATE ELEV = 662.40
INV ELEV = 660.15

LARRY & DEBBIE SIMMONS

PARCEL NO. 6144102
SAMUEL & LINDA OSHNER

PARCEL NO. 6144114
JOE E. CHURCHILL, TRUSTEE



FILE NAME =	USER NAME = laughlinr1	DESIGNED -	REVISED -	STATE OF ILLINOIS DEPARTMENT OF TRANSPORTATION	PLAN VIEW - FAU 7817 (CH 36 / PAYSON ROAD)	F.A. RTE.	SECTION	COUNTY	TOTAL SHEETS	SHEET NO.	
et:\pwork\pwidot\LAUGHLINRL\0114681\0	2PLAN08.dgn	DRAWN -	REVISED -			•	(11)N	ADAMS	117	42	
	PLOT SCALE = 40.0000' / IN.	CHECKED -	REVISED -			•	FAS 1597 & FAU 7830	CONTRACT NO. 72817			
	PLOT DATE = Dec-12-2008 02:53:05PM	DATE -	REVISED -			FED. ROAD DIST. NO. ILLINOIS FED. AID PROJECT					

SCALE: 1"=20' SHEET NO. 16 OF 19 SHEETS STA. 12+52 TO STA. 14+00