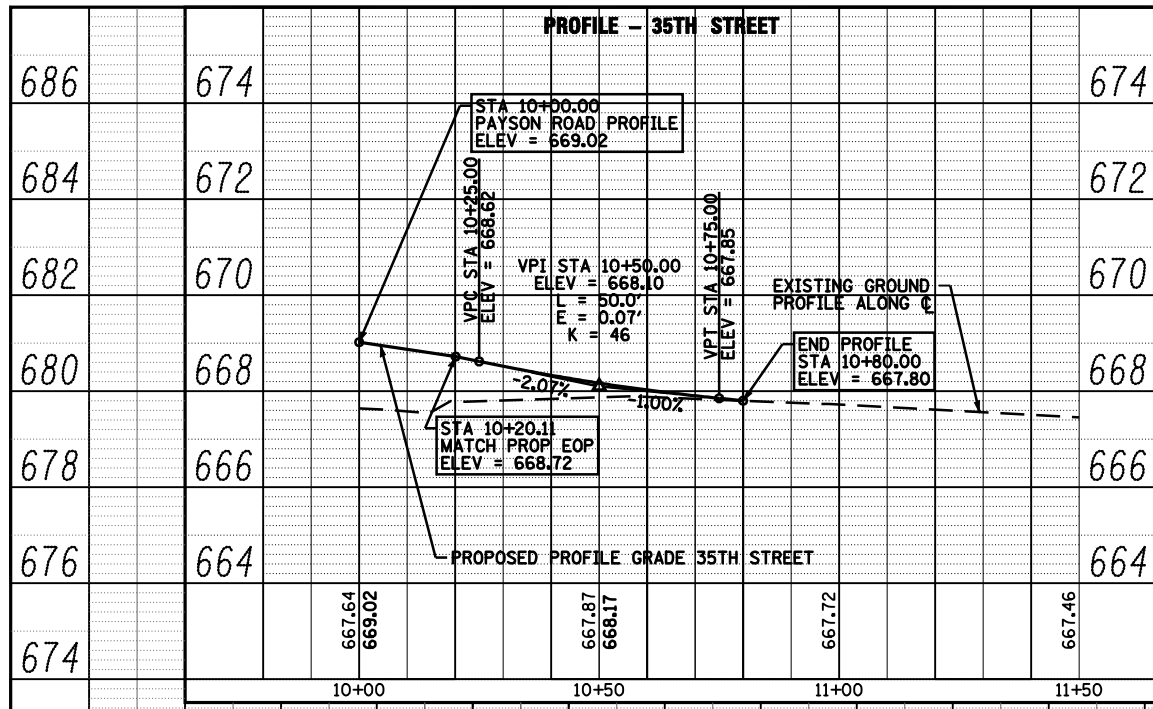
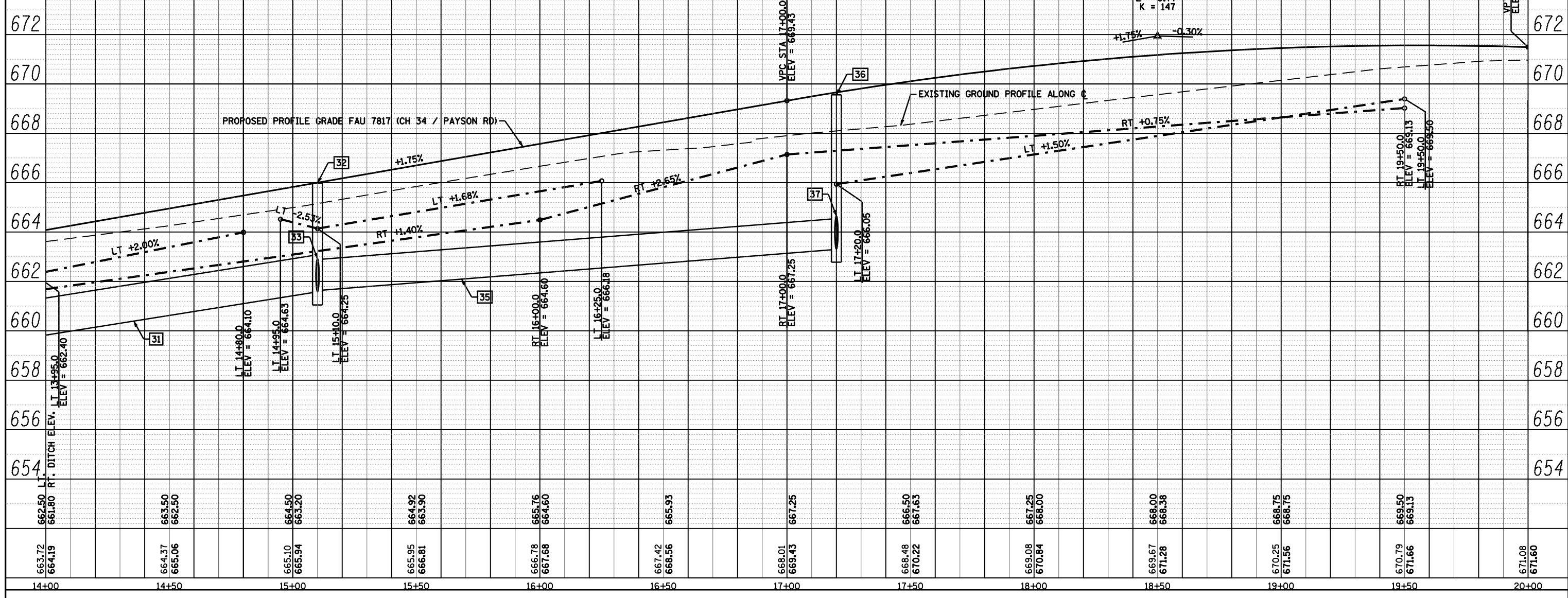


PLAN	SURVEYED	BY	DATE
	PLOTTED		
	NOTED		
	CHECKED		
	FILE NAME		
	NO.		

PROFILE	SURVEYED	BY	DATE
	GRADES CHECKED		
	STRUCTURE		
	NOTATIONS		
	CHFD		
	NO.		



- [31] STORM SEWERS, CLASS A, TYPE 1 18", 112'  
USFL = 661.66 DSFL = 659.89  
SLOPE = 1.58%  
TRENCH BACKFILL, 25.9 CU YD
- [32] STA 15+10.0 22.5' LT  
INLETS, TYPE E, 1 EACH  
TOP CURB ELEV = 660.09  
INV ELEV = 661.16
- [33] STORM SEWERS, CLASS A, TYPE 1 12", 14'  
USFL = 662.00 DSFL = 661.86  
SLOPE = 1.00%  
TRENCH BACKFILL, 1.7 CU YD
- [34] STA 15+10.0 41.0' LT  
INLETS, TYPE A, TY 8 GR, 1 EACH  
TOP GRATE ELEV = 664.25  
INV ELEV = 662.00
- [35] STORM SEWERS, CLASS A, TYPE 2 15", 20  
USFL = 663.39 DSFL = 661.76  
SLOPE = 0.79%  
TRENCH BACKFILL, 60.6 CU YD
- [36] STA 17+20.0 27.8' LT  
INLETS, TYPE E, 1 EACH  
TOP CURB ELEV = 669.67  
INV ELEV = 662.89
- [37] STORM SEWERS, CLASS A, TYPE 1 12", 22  
USFL = 663.80 DSFL = 663.59  
SLOPE = 0.95%  
TRENCH BACKFILL, 2.4 CU YD
- [38] STA 17+20.0 53.5' LT  
INLETS, TYPE A, TY 8 GR, 1 EACH  
TOP GRATE ELEV = 666.05  
INV ELEV = 663.80



FILE NAME =	USER NAME = laughlinr1	DESIGNED -	REVISED -
c:\pw_work\PWIDOT\LAUGHLINR1\0114681\049\PROF09.dgn		CHECKED -	REVISED -
PLOT SCALE = 40.0000' / IN.		DRAWN -	REVISED -
PLOT DATE = Dec-12-2008 02:53:12PM		CHECKED -	REVISED -

**STATE OF ILLINOIS  
DEPARTMENT OF TRANSPORTATION**

**PROFILE - FAU 7817 (CH 36 /PAYSON ROAD)**

SCALE: 1"=40' 0" / 1"=20' 0"      SHEET NO. 19 OF 19 SHEETS      STA. 12+52 TO STA. 14+00

F.A. RTE.	SECTION	COUNTY	TOTAL SHEETS	SHEET NO.
	(11N)	ADAMS	117	45
• - FAS 1597 & FAU 7830		CONTRACT NO. 72817		
FED. ROAD DIST. NO.		ILLINOIS FED. AID PROJECT		