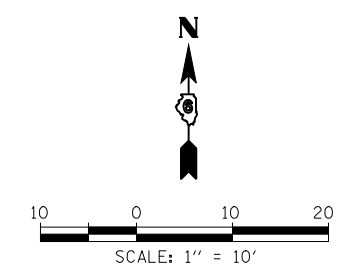
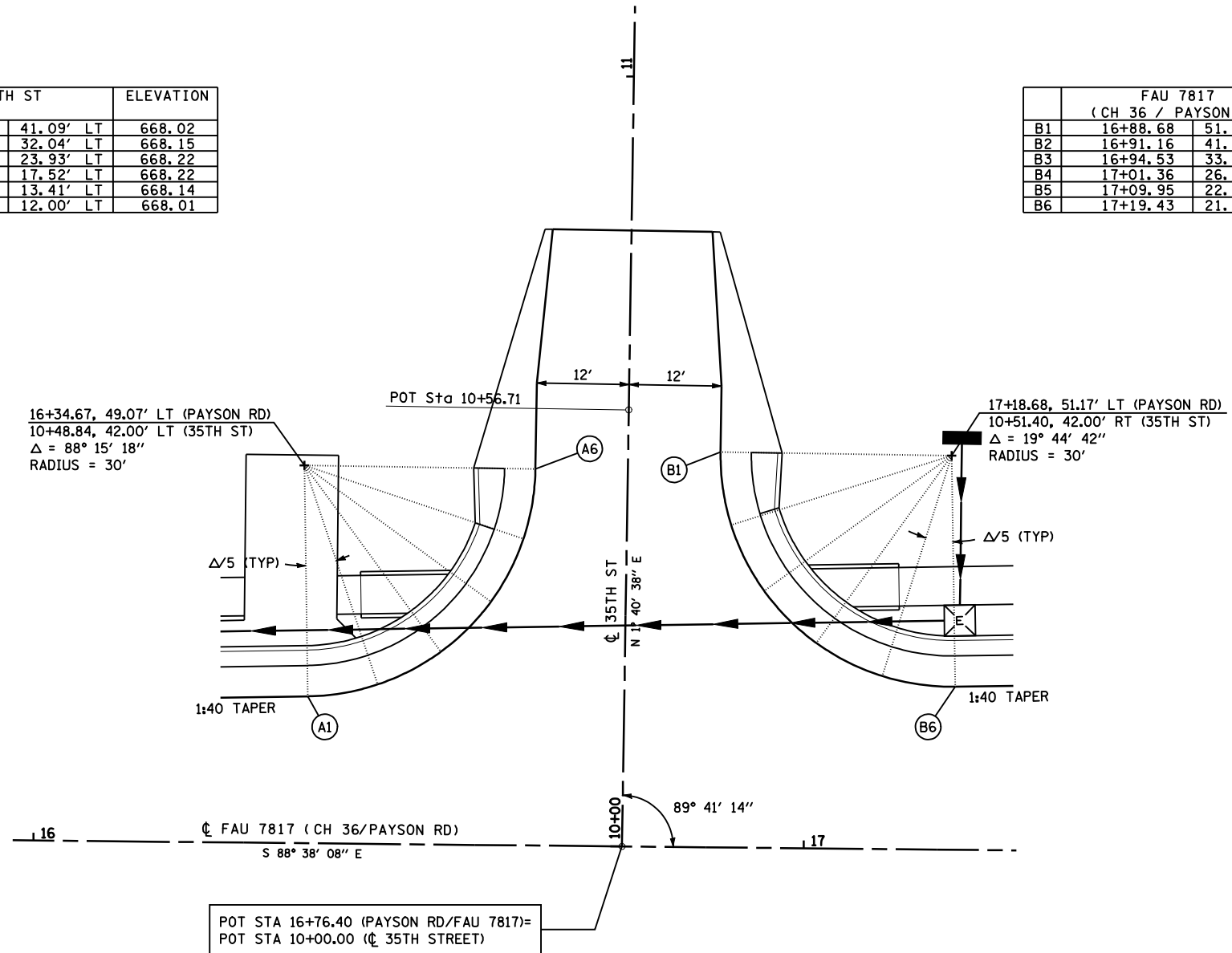


	FAU 7817 (CH 36 / PAYSON RD)		35TH ST		ELEVATION
A1	16+35.42	19.08' LT	10+18.86	41.09' LT	668.02
A2	16+44.48	20.72' LT	10+20.55	32.04' LT	668.15
A3	16+52.61	25.03' LT	10+24.90	23.93' LT	668.22
A4	16+59.06	31.60' LT	10+31.51	17.52' LT	668.22
A5	16+63.21	39.82' LT	10+39.75	13.41' LT	668.14
A6	16+64.67	48.91' LT	10+48.84	12.00' LT	668.01

	FAU 7817 (CH 36 / PAYSON RD)		35TH ST		ELEVATION
B1	16+88.68	51.34' LT	10+51.40	12.00' RT	667.97
B2	16+91.16	41.88' LT	10+41.96	13.53' RT	668.23
B3	16+94.53	33.38' LT	10+33.47	17.95' RT	668.52
B4	17+01.36	26.68' LT	10+26.81	24.81' RT	668.94
B5	17+09.95	22.47' LT	10+22.65	33.43' RT	669.25
B6	17+19.43	21.18' LT	10+21.42	42.91' RT	669.44



FILE NAME =	USER NAME = laughlinr1	DESIGNED -	REVISED -
et:\pw\work\PWIDOT\LAUGHLINRL\0114681\03	fgeometric03.dgn	DRAWN -	REVISED -
	PLOT SCALE = 20.0000' / IN.	CHECKED -	REVISED -
	PLOT DATE = Dec-12-2008 02:53:45PM	DATE -	REVISED -

**STATE OF ILLINOIS
DEPARTMENT OF TRANSPORTATION**

**GEOMETRIC DETAIL
35TH STREET**

SCALE: 1"=10' SHEET NO. 1 OF 1 SHEETS STA. TO STA.

F.A. RTE.	SECTION	COUNTY	TOTAL SHEETS	SHEET NO.
• - FAS 1597 & FAU 7830	(11)N	ADAMS	117	54
FED. ROAD DIST. NO.	ILLINOIS FED. AID PROJECT	CONTRACT NO. 72817		