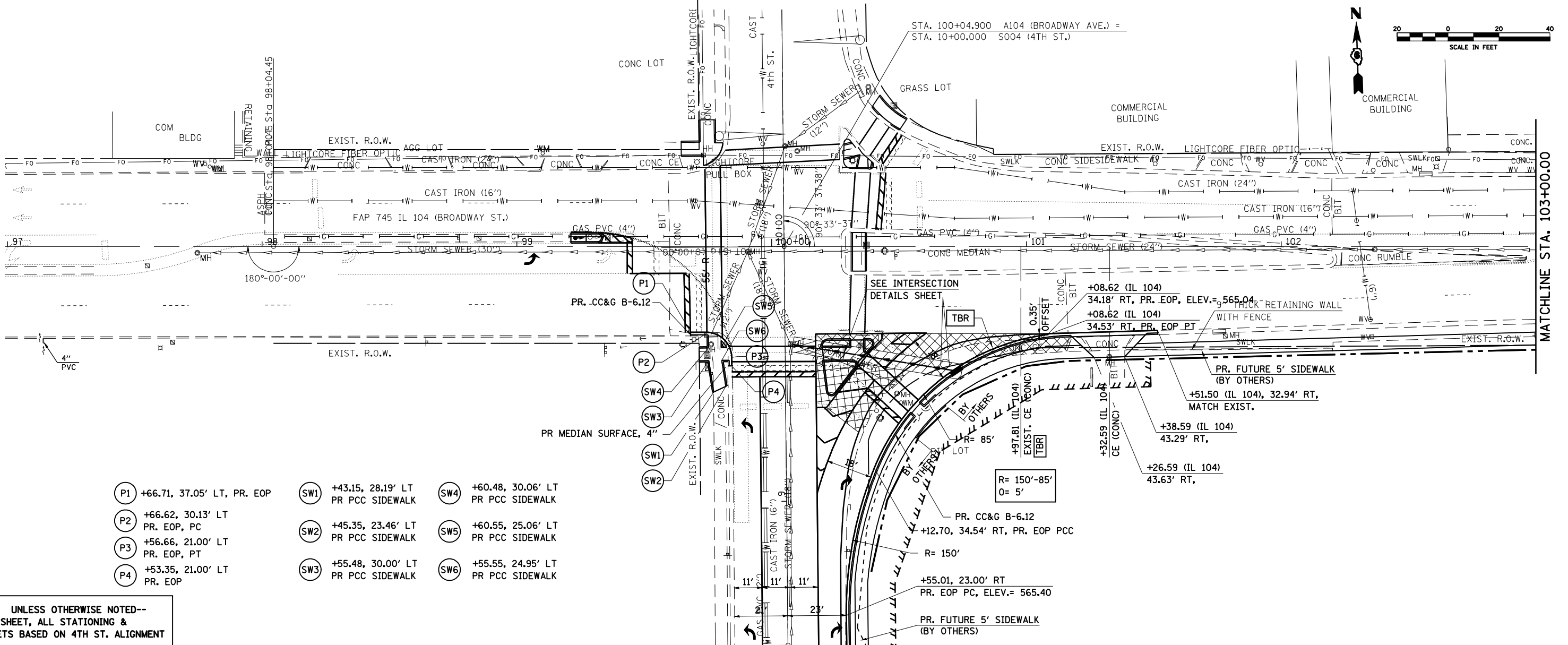


DATE	BY	
PLAN	SURVEYED	CHECKED
	NO. BOOK	NO. SHEET
	NOTE NO.	FILE NAME

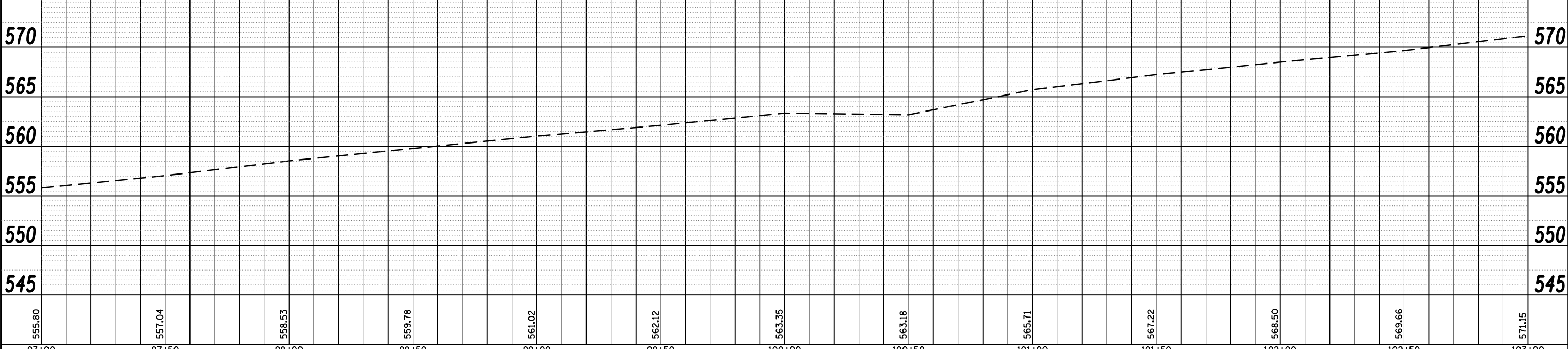


MATCHLINE STA. 103+00.00

DATE	BY	
PROFILE	SURVEYED	CHECKED
	NO. BOOK	NO. SHEET
	NOTE NO.	FILE NAME

- P1 +66.71, 37.05' LT, PR. EOP
- P2 +66.62, 30.13' LT
PR. EOP, PC
- P3 +56.66, 21.00' LT
PR. EOP, PT
- P4 +53.35, 21.00' LT
PR. EOP
- SW1 +43.15, 28.19' LT
PR PCC SIDEWALK
- SW2 +45.35, 23.46' LT
PR PCC SIDEWALK
- SW3 +55.48, 30.00' LT
PR PCC SIDEWALK
- SW4 +60.48, 30.06' LT
PR PCC SIDEWALK
- SW5 +60.55, 25.06' LT
PR PCC SIDEWALK
- SW6 +55.55, 24.95' LT
PR PCC SIDEWALK

**NOTE: UNLESS OTHERWISE NOTED--
THIS SHEET, ALL STATIONING &
OFFSETS BASED ON 4TH ST. ALIGNMENT**



FILE NAME =	USER NAME = laughlin1	DESIGNED -	REVISED -
c:\pwork\PWIDOT\LAUGHLINRL\dms24089\d62407-shr-plnprfl.dgn		DRAWN -	REVISED -
PLOT SCALE = 40.0000' / IN.		CHECKED -	REVISED -
PLOT DATE = Jan-05-2009 09:41:46AM		DATE -	REVISED -

**STATE OF ILLINOIS
DEPARTMENT OF TRANSPORTATION**

PLAN & PROFILE - BROADWAY ST. (IL 104)

SCALE: SHEET NO. OF SHEETS STA. TO STA.

F.A.P. RTE. 745	SECTION .	COUNTY ADAMS	TOTAL SHEETS 37	SHEET NO. 13
FED. ROAD DIST. NO. ILLINOIS FED. AID PROJECT			CONTRACT NO. 72A96	

• D-6 INTERSECTION IMPROVEMENT