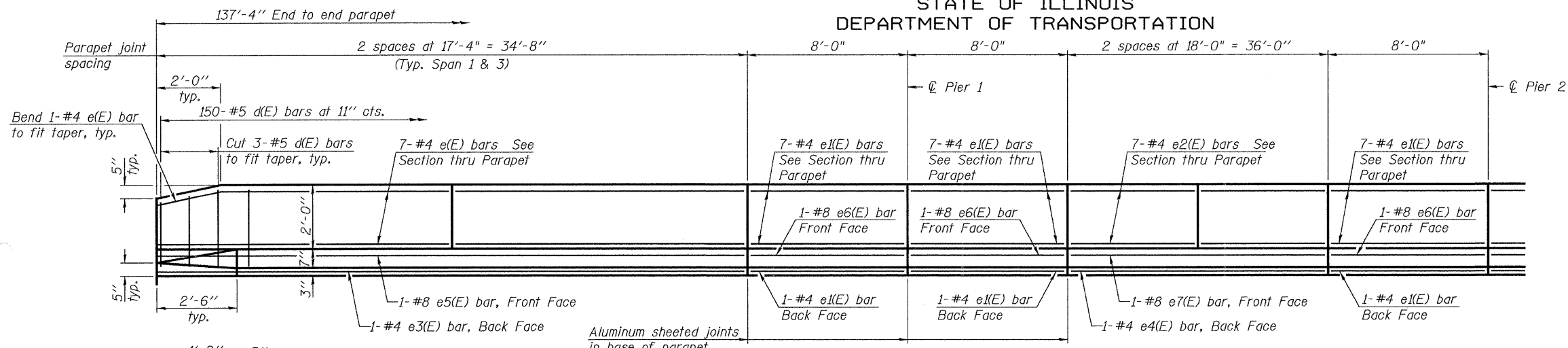


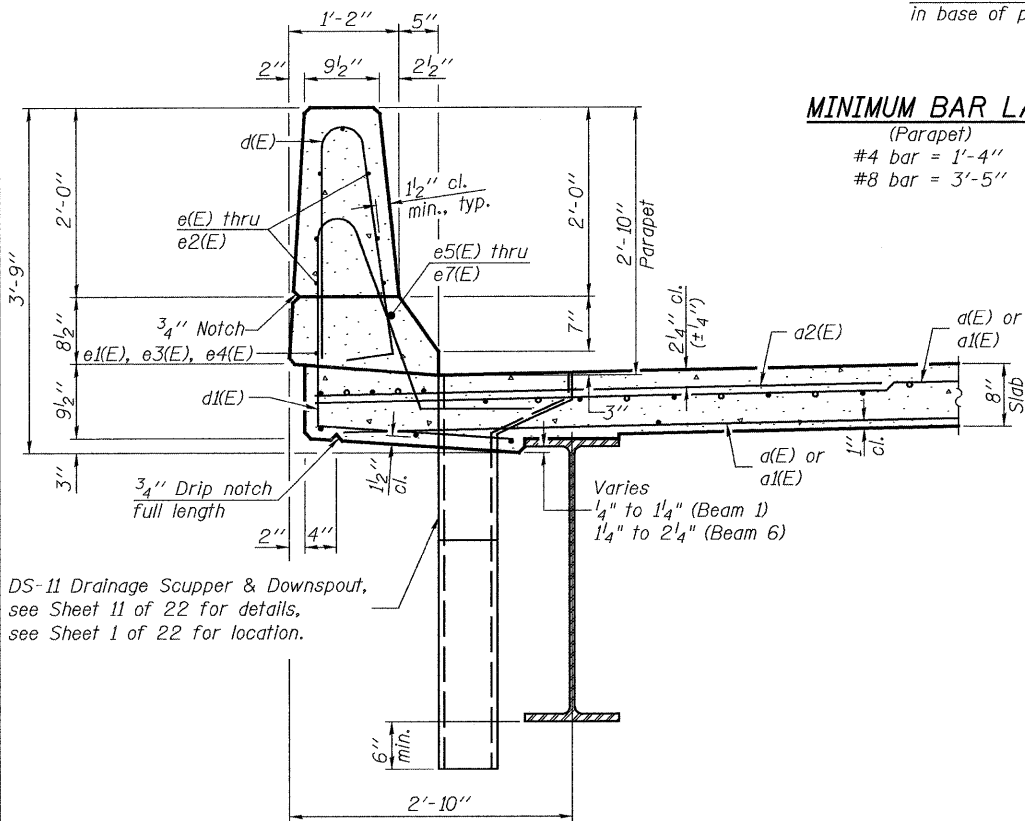
STATE OF ILLINOIS
DEPARTMENT OF TRANSPORTATION



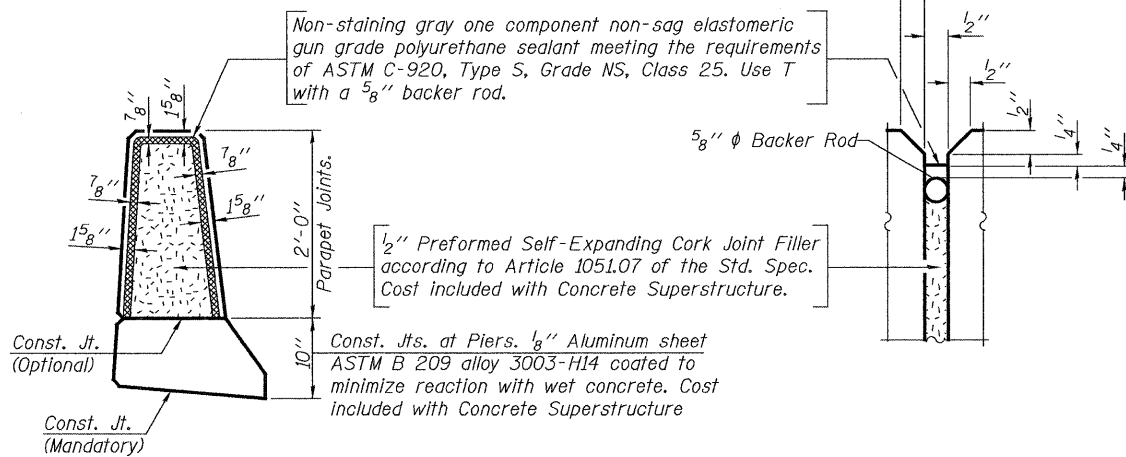
INSIDE ELEVATION OF PARAPET

MINIMUM BAR LAP

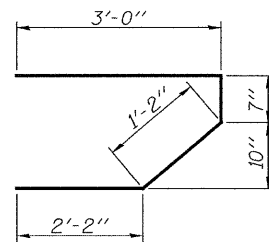
(Parapet)
#4 bar = 1'-4"
#8 bar = 3'-5"



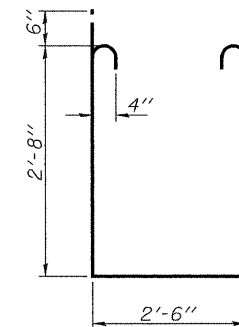
SECTION THRU PARAPET



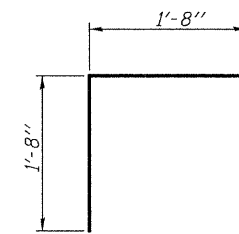
PARAPET JOINT DETAILS



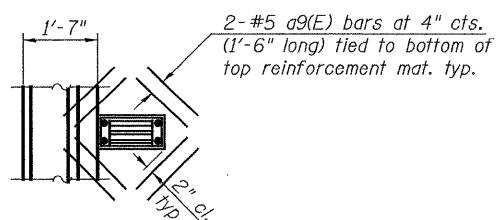
BAR s(E)



BAR s1(E)

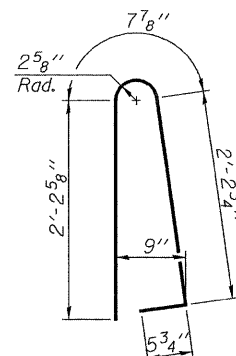


BAR v(E)

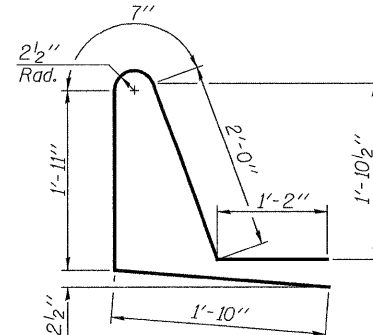


PLAN AT SCUPPER

Note:
Cut longitudinal reinforcement to clear drainage scuppers.



BAR d(E)



BAR d1(E)

SUPERSTRUCTURE
BILL OF MATERIAL

Bar	No.	Size	Length	Shape
a(E)	389	#5	16'-2"	—
a1(E)	383	#5	19'-4"	—
a2(E)	494	#6	6'-0"	—
a3(E)	4	#5	18'-8"	—
a4(E)	4	#5	22'-4"	—
a5(E)	10	#5	18'-0"	—
a6(E)	15	#5	17'-9"	—
a7(E)	12	#5	21'-3"	—
a8(E)	18	#5	22'-0"	—
a9(E)	8	#5	1'-6"	—
b(E)	156	#5	35'-11"	—
b1(E)	70	#6	28'-0"	—
b2(E)	160	#5	29'-2"	—
d(E)	300	#5	5'-7"	⌋
d1(E)	300	#5	7'-6"	⌋
e(E)	56	#4	17'-0"	—
e1(E)	64	#4	7'-8"	—
e2(E)	28	#4	17'-8"	—
e3(E)	4	#4	34'-4"	—
e4(E)	2	#4	35'-8"	—
e5(E)	4	#8	34'-4"	—
e6(E)	8	#8	7'-8"	—
e7(E)	2	#8	35'-8"	—
m(E)	4	#6	17'-10"	—
m1(E)	6	#6	18'-11"	—
m2(E)	12	#6	9'-9"	—
m3(E)	10	#6	6'-9"	—
m4(E)	4	#6	2'-10"	—
m5(E)	6	#6	22'-6"	—
m6(E)	4	#6	21'-6"	—
s(E)	72	#5	6'-11"	⌋
s1(E)	72	#4	8'-10"	⌋
v(E)	70	#5	3'-4"	⌋
Reinforcement Bars, Epoxy Coated	Pound		42060	
Concrete Superstructure	Cu. Yds.		177.5	

SUPERSTRUCTURE DETAILS
ILLINOIS 96 OVER
FOX CREEK
STRUCTURE NO. 007-0028

JD Johnson, Depp & Quisenberry
CONSULTING ENGINEERS
Springfield, Illinois

DESIGNED: JDQ DRAWN: PTR
CHECKED: DCD CHECKED: DCD

SHEET 9 OF 22	F.A.P. RTE. 304	SECTION 5A-BR	COUNTY CALHOUN	TOTAL SHEETS 60	SHEET NO. 32
STA. 475+19.62			CONTRACT NO. 76886		
FED. ROAD DIST. NO. ILLINOIS FED. AID PROJECT					