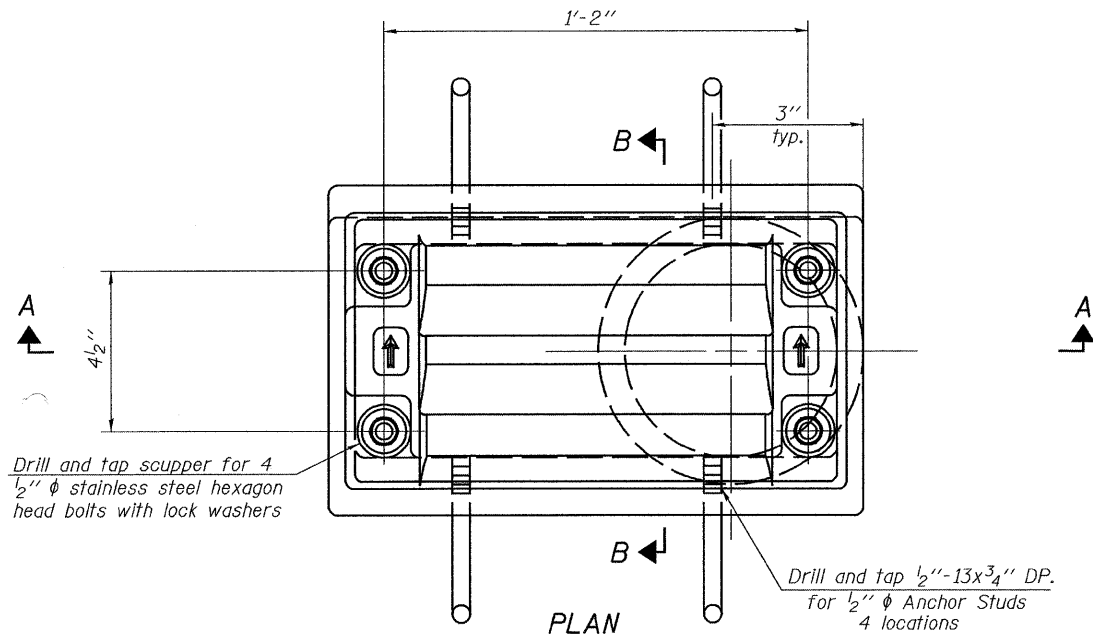
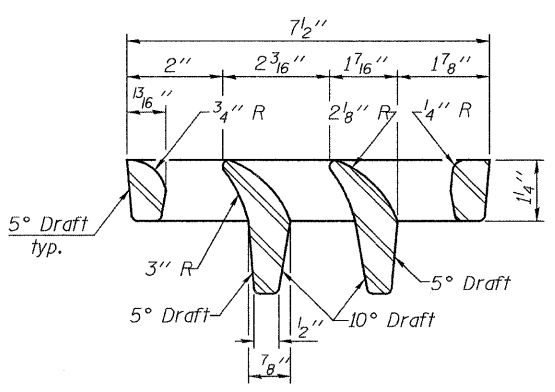


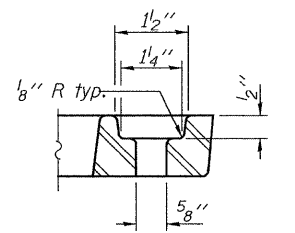
STATE OF ILLINOIS
DEPARTMENT OF TRANSPORTATION



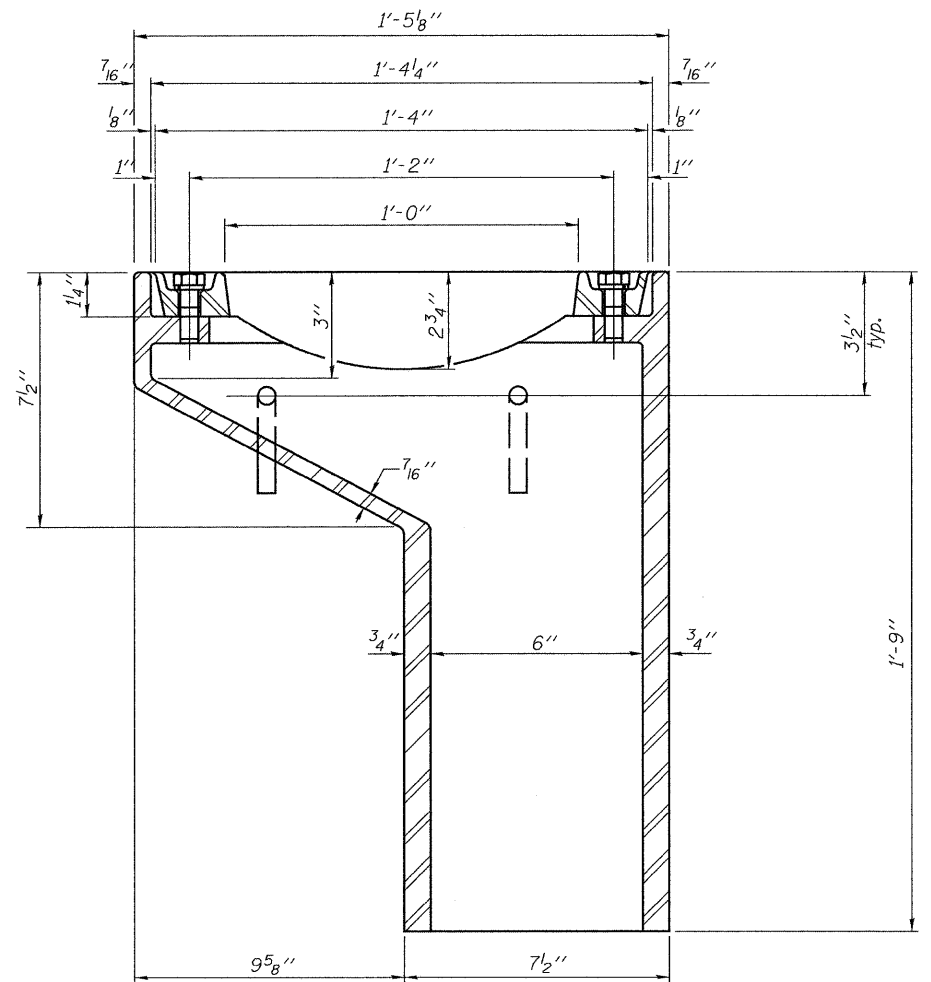
PLAN



VANE GRATE DETAIL

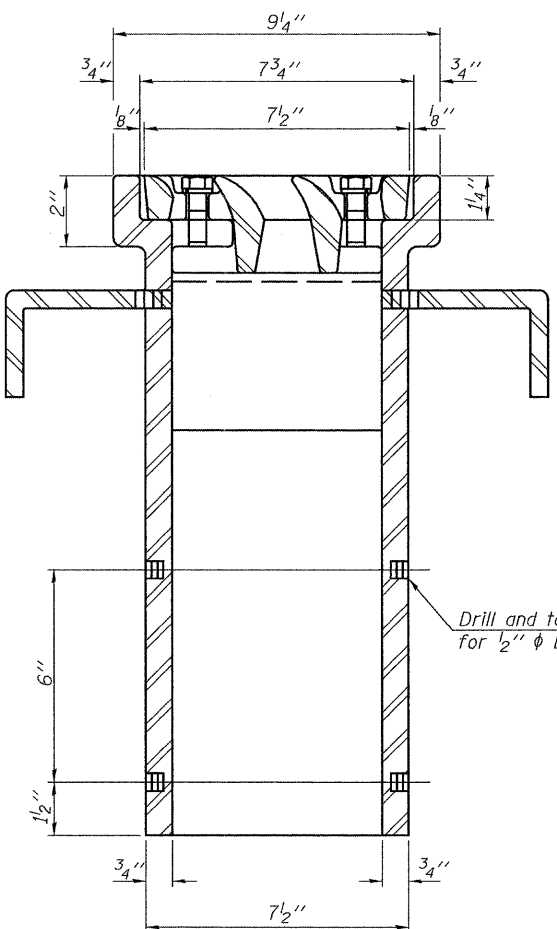


BOLT HOLE DETAIL



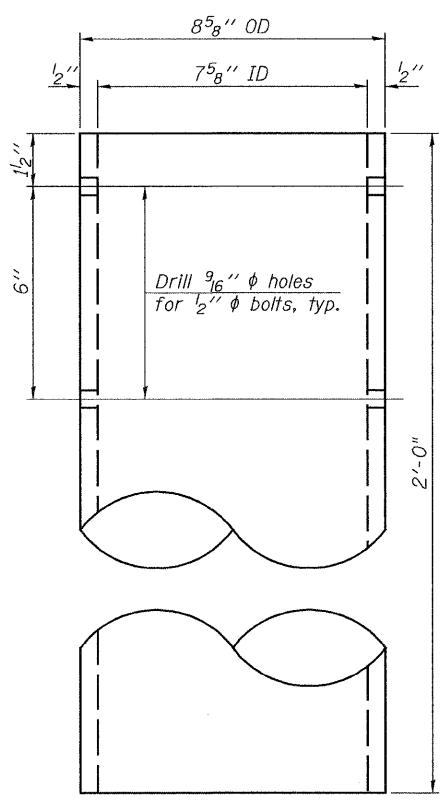
SECTION A-A

See sheet 9 of 22 for scupper location relative to parapet.

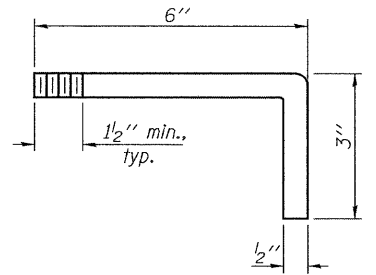


SECTION B-B

Drill and tap 1/2"-13x1/2" DP. for 1/2" φ bolts. (4 locations)



DOWNSPOUT



ANCHOR STUD DETAIL

BILL OF MATERIAL

ITEM	UNIT	QUANTITY
Drainage Scupper, DS-11	Each	1

DRAINAGE SCUPPER, DS-11
ILLINOIS 96 OVER
FOX CREEK
STRUCTURE NO. 007-0028

SHEET	F.A.P. RTE.	SECTION	COUNTY	TOTAL SHEETS	SHEET NO.
11 OF 22	304	5A-BR	CALHOUN	60	34
STA. 475+19.62			CONTRACT NO. 76886		
FED. ROAD DIST. NO.			ILLINOIS FED. AID PROJECT		

JD Johnson, Depp & Quisenberry
CONSULTING ENGINEERS
Springfield, Illinois

DESIGNED: JDQ	DRAWN: SJS
CHECKED: DCD	CHECKED: DCD

DS-11 5-16-08

FILE: J:\JDD\110164 IL-96\96 Fox Creek Final\FoxCreek\Niscupper.dgn
USER: DCD
DATE: 11/26/2008 10:40:44