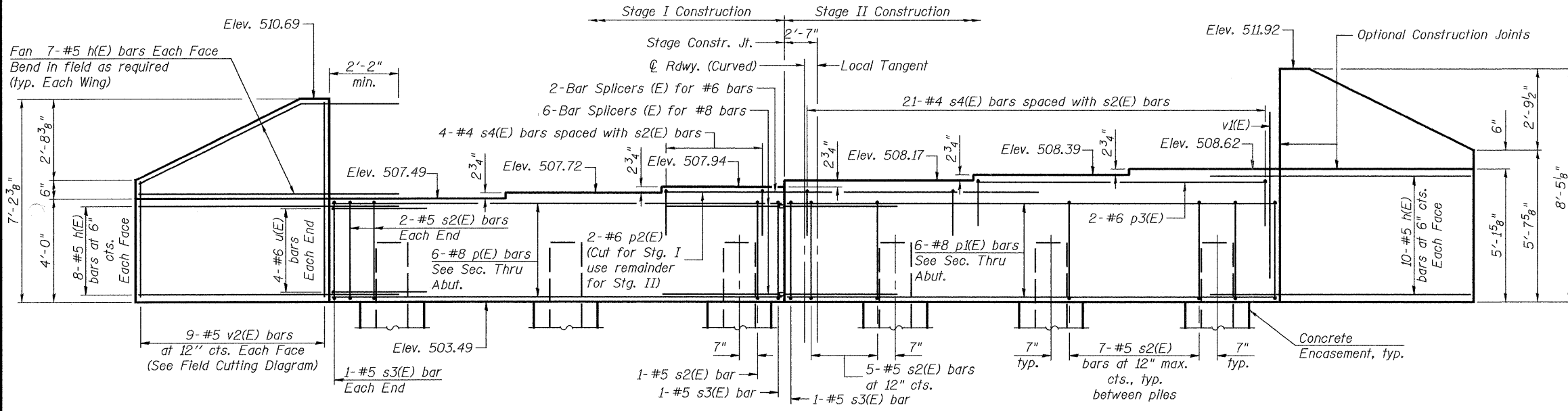
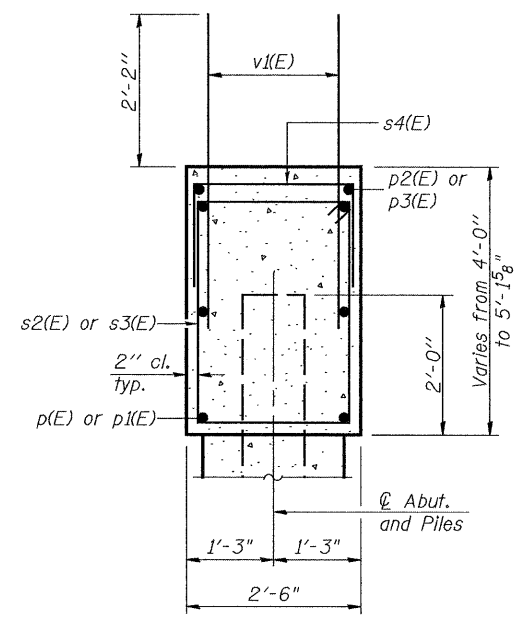


STATE OF ILLINOIS
DEPARTMENT OF TRANSPORTATION

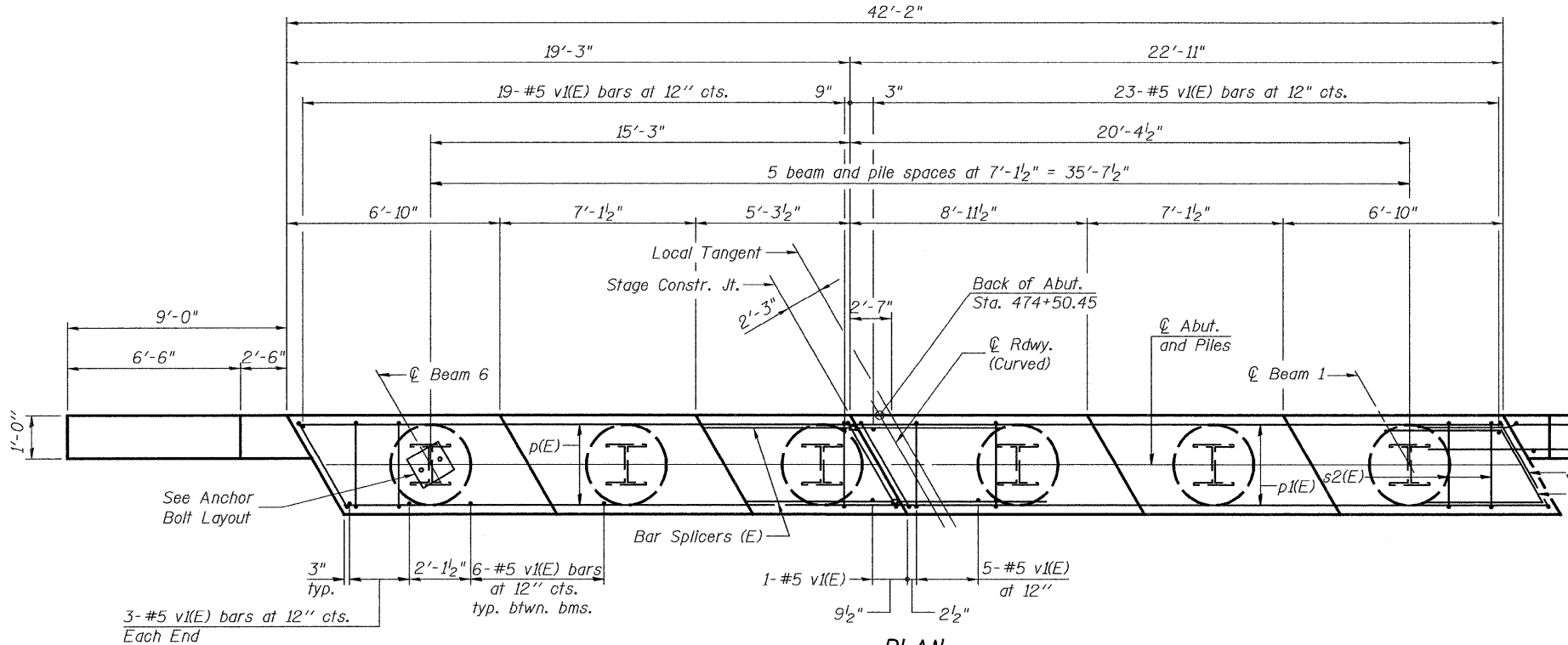
Note: Pour steps monolithically with cap.
Space reinforcement in cap to miss anchor bolts.



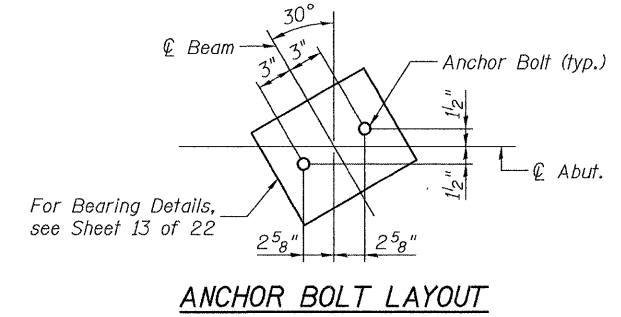
ELEVATION



SEC. THRU ABUT.



PLAN



ANCHOR BOLT LAYOUT

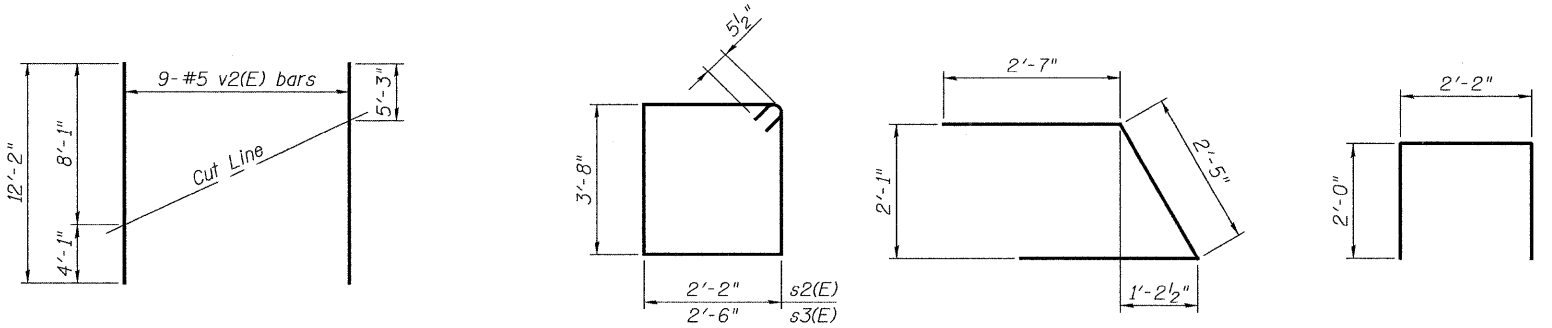
BILL OF MATERIAL

Bar	No.	Size	Length	Shape
h(E)	64	#5	11'-0"	—
p(E)	6	#8	18'-11"	—
p1(E)	6	#8	22'-7"	—
p2(E)	2	#6	15'-3"	—
p3(E)	2	#6	13'-7"	—
s2(E)	38	#5	12'-7"	□
s3(E)	4	#5	13'-3"	□
s4(E)	25	#4	6'-2"	□
u(E)	8	#6	7'-7"	∟
v1(E)	78	#5	4'-4"	—
v2(E)	18	#5	12'-2"	—
Structure Excavation		Cu. Yd.	70	
Concrete Structures		Cu. Yd.	22.4	
Reinforcement Bars, Epoxy Coated		Pound	2820	
Furnishing Steel Piles HP12x53		Foot	275	
Driving Piles		Foot	275	
Test Pile Steel HP12x53		Each	1	
Pile Shoes		Each	6	
Concrete Encasement		Cu. Yd.	2.1	

For details of Bar Splicers, see sheet 18 of 22.
For details of piles and Concrete Encasement, see sheet 17 of 22.

WEST ABUTMENT
ILLINOIS 96 OVER
FOX CREEK
STRUCTURE NO. 007-0028

PILE DATA
Type: Steel-HP 12x53 with Pile Shoes
Nominal Required Bearing: 260 kips
Factored Resistance Available: 130 kips
Est. Length: 55'
No. Production Piles: 5
No. Test Piles: 1



FIELD CUTTING DIAGRAM
Order v2(E) full length. Cut as shown and use remainder of bars in opposite wing.

BARS s2(E) & s3(E)

BAR u(E)

BAR s4(E)

JD Johnson, Depp & Quisenberry
CONSULTING ENGINEERS
Springfield, Illinois

DESIGNED: JDQ	DRAWN: SJS
CHECKED: DCD	CHECKED: DCD

AI-L 5-16-08

SHEET 14 OF 22	F.A.P. RTE. 304	SECTION 5A-BR	COUNTY CALHOUN	TOTAL SHEETS 60	SHEET NO. 37
	STA. 475+19.62		CONTRACT NO. 76886		
FED. ROAD DIST. NO. ILLINOIS FED. AID PROJECT					

FILE: s:\jdd\1064 IL-DSV\9 IL 96 Fox Creek-FINAL\1-FoxCreek\Abutment.dgn
USER: DCD
DATE: 11/26/2008 10:40:48