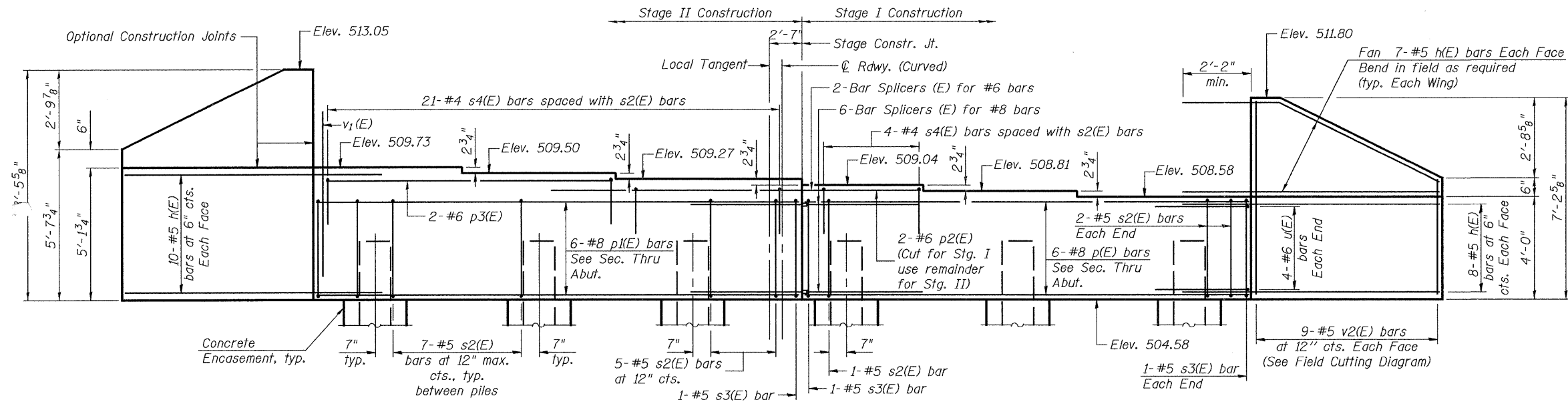
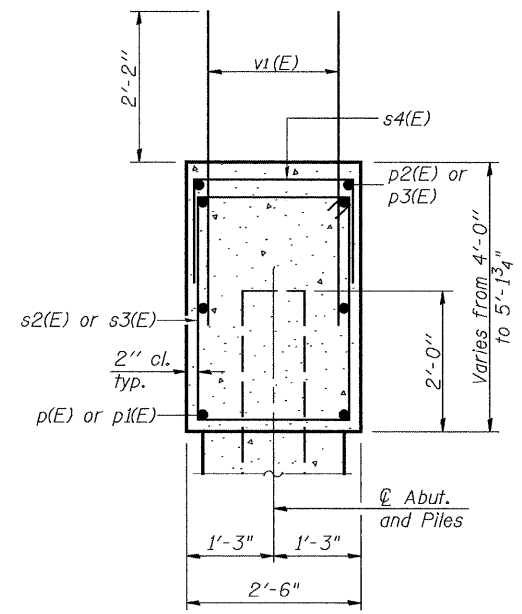


Note: Pour steps monolithically with cap.
Space reinforcement in cap to miss anchor bolts.

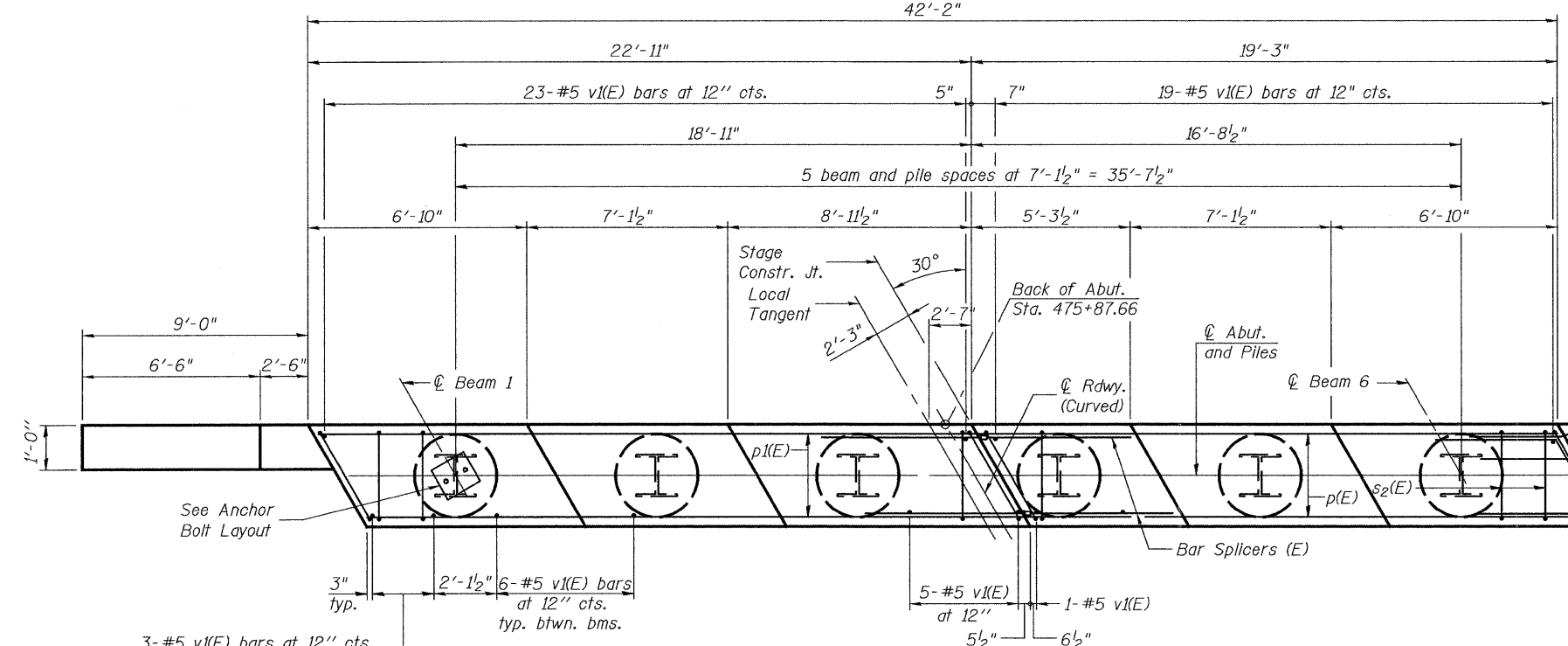
STATE OF ILLINOIS
DEPARTMENT OF TRANSPORTATION



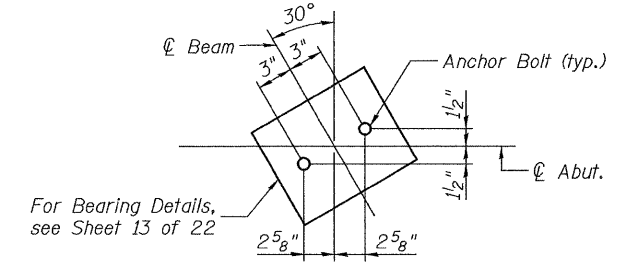
ELEVATION



SEC. THRU ABUT.



PLAN



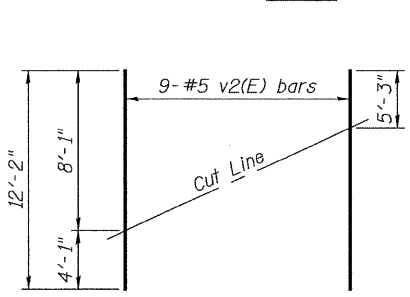
ANCHOR BOLT LAYOUT

BILL OF MATERIAL

Bar	No.	Size	Length	Shape
h(E)	64	#5	11'-0"	—
p(E)	6	#8	18'-11"	—
p1(E)	6	#8	22'-7"	—
p2(E)	2	#6	15'-3"	—
p3(E)	2	#6	13'-7"	—
s2(E)	38	#5	12'-7"	□
s3(E)	4	#5	13'-3"	□
s4(E)	25	#4	6'-2"	□
u(E)	8	#6	7'-7"	△
v1(E)	78	#5	4'-4"	—
v2(E)	18	#5	12'-2"	—
Structure Excavation		Cu. Yd.	161	
Concrete Structures		Cu. Yd.	22.4	
Reinforcement Bars, Epoxy Coated		Pound	2820	
Furnishing Steel Piles HP12x53		Foot	325	
Driving Piles		Foot	325	
Test Pile Steel HP12x53		Each	1	
Pile Shoes		Each	6	
Concrete Encasement		Cu. Yd.	2.1	

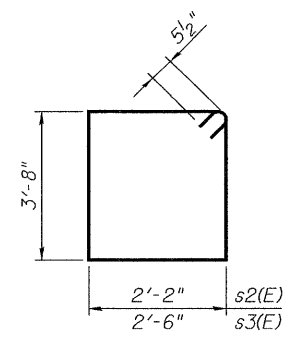
For details of Bar Splicers, see sheet 18 of 22.
For details of piles and Concrete Encasement, see sheet 17 of 22.

EAST ABUTMENT
ILLINOIS 96 OVER
FOX CREEK
STRUCTURE NO. 007-0028

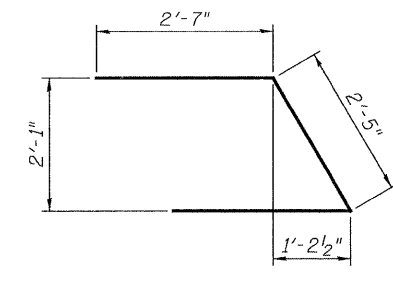


FIELD CUTTING DIAGRAM

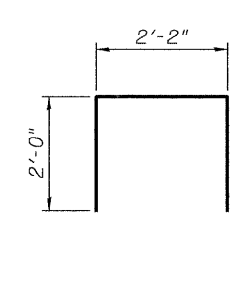
Order v2(E) full length. Cut as shown and use remainder of bars in opposite wing.



BARS s2(E) & s3(E)



BAR u(E)



BAR s4(E)

PILE DATA

Type: Steel-HP 12x53 with Pile Shoes
Nominal Required Bearing: 260 kips
Factored Resistance Available: 130 kips
Est. Length: 65'
No. Production Piles: 5
No. Test Piles: 1

JD Johnson, Depp & Quisenberry
CONSULTING ENGINEERS
Springfield, Illinois

DESIGNED: JDO	DRAWN: SJS
CHECKED: DCD	CHECKED: DCD

AI-L 5-16-08

SHEET 15 OF 22	F.A.P. RTE. 304	SECTION 5A-BR	COUNTY CALHOUN	TOTAL SHEETS 60	SHEET NO. 38
	STA. 475+19.62		CONTRACT NO. 76886	FED. ROAD DIST. NO. [ILLINOIS] FED. AID PROJECT	

FILE: J:\JDO\10164 IL-08VW9 IL 96 Fox Creek-FINAL\FoxCreekV5abutment2.dgn
 USER: DCD
 DATE: 11/26/2008 10:40:51