

Notes:  
 Space reinforcement in cap to miss anchor bolts.  
 Pour steps monolithically with cap.  
 If a portion of the pier wall or concrete encasement is under water, reinforcement may be placed underwater into forms. Concrete shall be tremied according to Article 503.08 of the Standard Specifications to an elevation of 1'-0" above the water line at the time of construction.

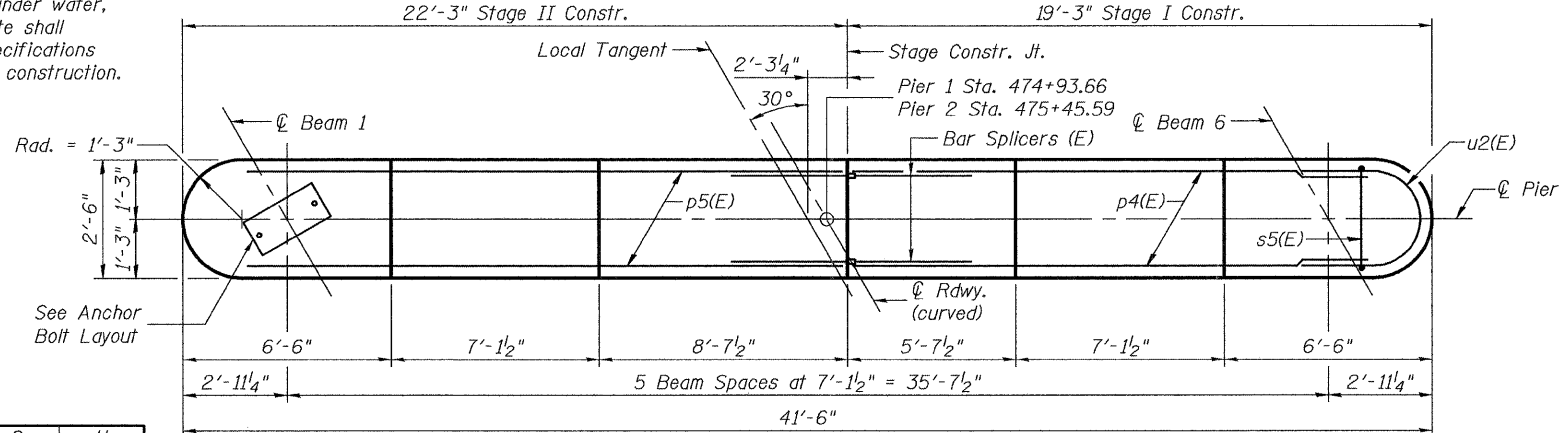
**PILE DATA**

Type: Steel-HP 12x53 with Pile Shoes  
 Nominal Required Bearing: 412 kips  
 Factored Resistance Available: 206 kips  
 Est. Length: 55' (Pier 1), 65' (Pier 2)  
 No. Production Piles: 5 (each Pier)  
 o. Test Piles: 1 (each Pier)

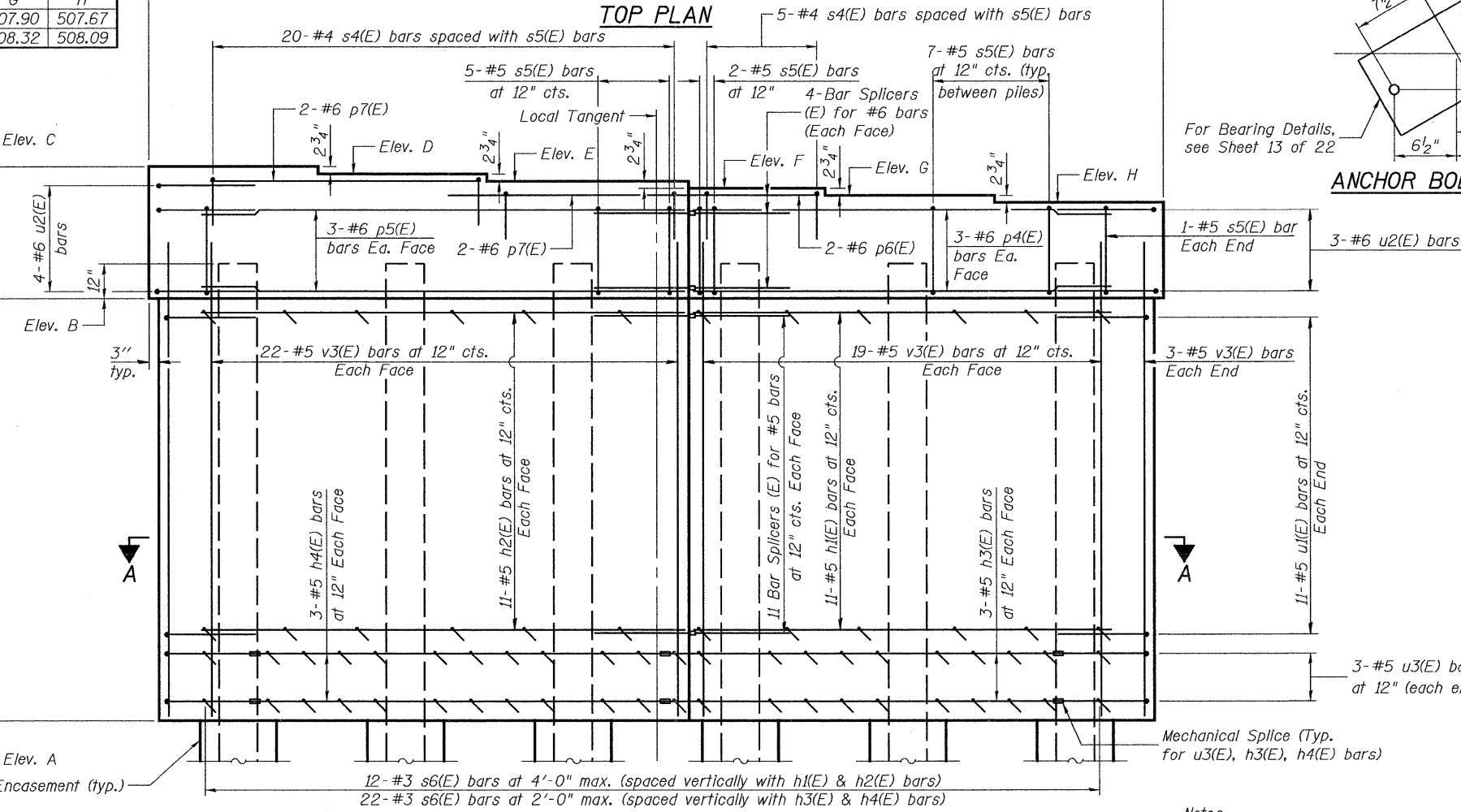
**TABLE OF ELEVATIONS**

Location	A	B	C	D	E	F	G	H
Pier 1	491.92	505.17	508.80	508.58	508.35	508.12	507.90	507.67
Pier 2	491.92	505.59	509.23	509.00	508.78	508.55	508.32	508.09

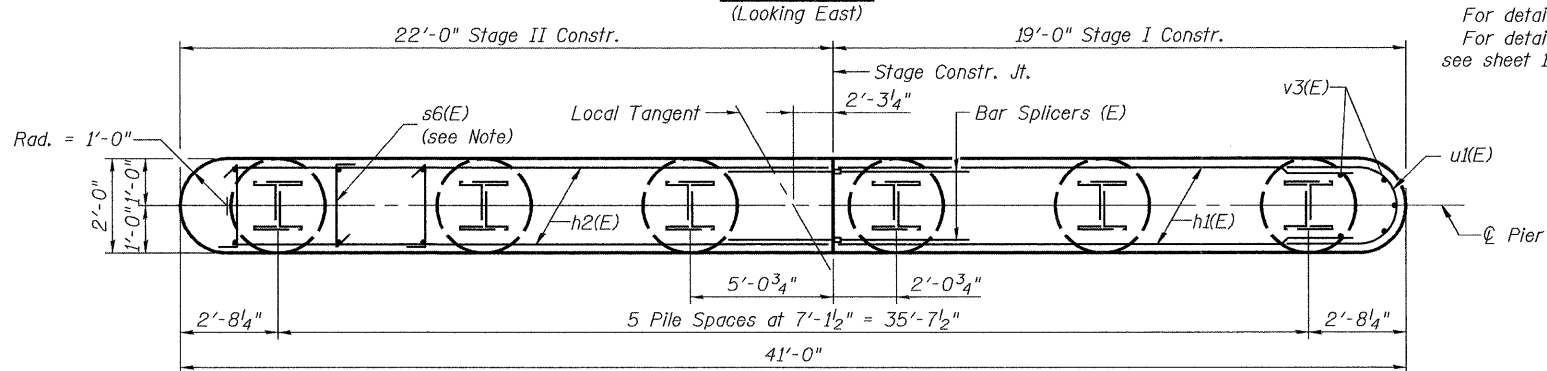
STATE OF ILLINOIS  
 DEPARTMENT OF TRANSPORTATION



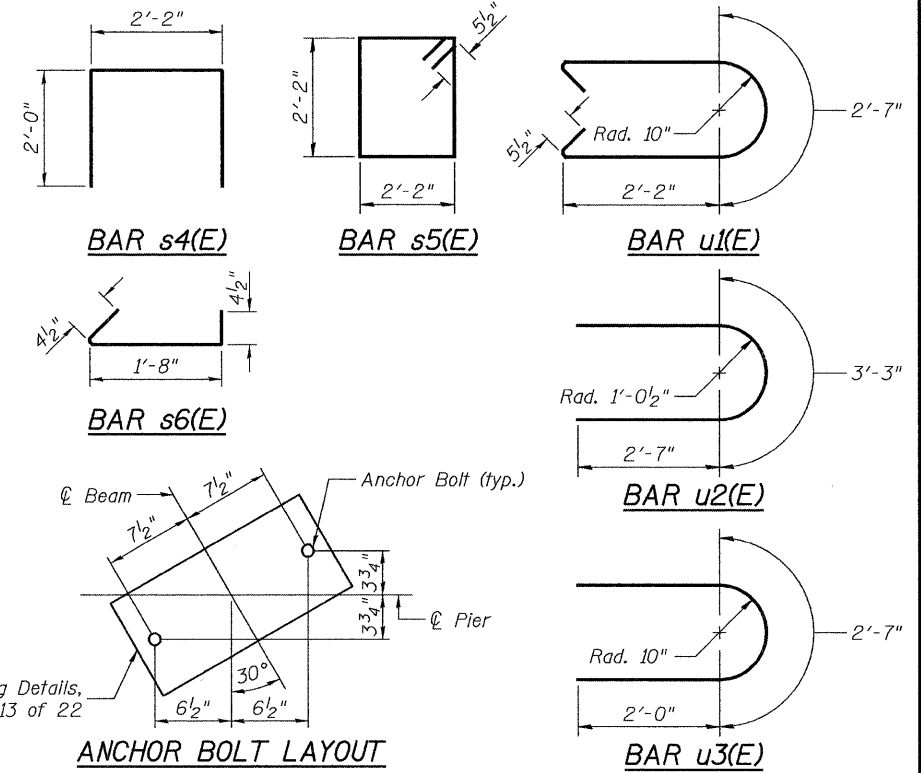
**TOP PLAN**



**ELEVATION**  
 (Looking East)



**SECTION A-A**



**ANCHOR BOLT LAYOUT**

**BILL OF MATERIAL**

Bar	No.	Size	Length	Shape
h1(E)	22	#5	17'-10"	—
h2(E)	22	#5	20'-10"	—
h3(E)	6	#5	16'-6"	—
h4(E)	6	#5	18'-6"	—
p4(E)	6	#6	17'-10"	—
p5(E)	6	#6	20'-10"	—
p6(E)	2	#6	5'-3"	—
p7(E)	4	#6	12'-2"	—
s4(E)	25	#4	6'-2"	□
s5(E)	37	#5	9'-7"	□
s6(E)	198	#3	2'-5"	└┘
u1(E)	22	#5	7'-10"	U
u2(E)	7	#6	8'-5"	U
u3(E)	6	#5	6'-7"	U
v3(E)	88	#5	14'-6"	—
<b>Concrete Structures</b>				
Concrete Structures	Cu. Yd.		Pier 1	Pier 2
Reinforcement Bars, Epoxy Coated	Pound		3840	3840
Furnishing Steel Piles HP12x53	Foot		275	325
Driving Piles	Foot		275	325
Test Pile Steel HP12x53	Each		1	1
Pile Shoes	Each		6	6
Concrete Encasement	Cu. Yd.		2.1	2.1
Mechanical Splice	Each		18	18
Underwater Structure Excav. Prof.-Loc. 1	Each		1	-
Underwater Structure Excav. Prof.-Loc. 2	Each		-	1

Notes:  
 Reinforcement Bar list is for one Pier only.  
 For details of Bar Splicers, see sheet 18 of 22.  
 For details of piles and Concrete Encasement, see sheet 17 of 22.

**MIN. BAR LAP**

#5 Bar = 2'-2"  
 #6 bar = 2'-7"

**PIERS 1 AND 2  
 ILLINOIS 96 OVER  
 FOX CREEK  
 STRUCTURE NO. 007-0028**

SHEET 16 OF 22	F.A.P. RTE. 304	SECTION 5A-BR	COUNTY CALHOUN	TOTAL SHEETS 60	SHEET NO. 39
	STA. 475+19.62		CONTRACT NO. 76886		
FED. ROAD DIST. NO. ILLINOIS FED. AID PROJECT					

**JD Johnson, Depp & Quisenberry**  
 CONSULTING ENGINEERS  
 Springfield, Illinois

DESIGNED: JDQ	DRAWN: PTR
CHECKED: DCD	CHECKED: DCD

FILE: J:\JDQ\10164 IL-DBVW99 IL 96 Fox Creek-FINAL\1-FoxCreek\6piers.dgn

USER: DCD

DATE: 11/26/2008 10:40:54