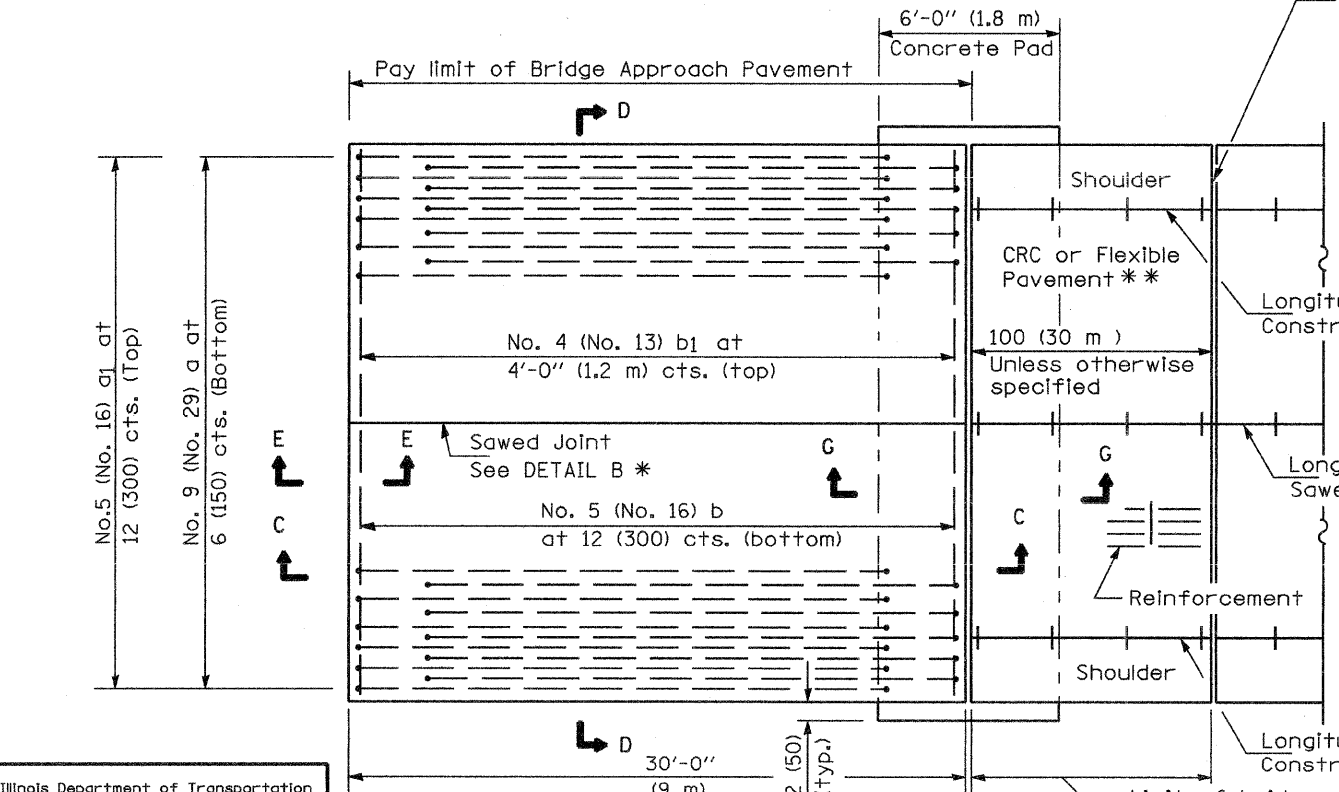
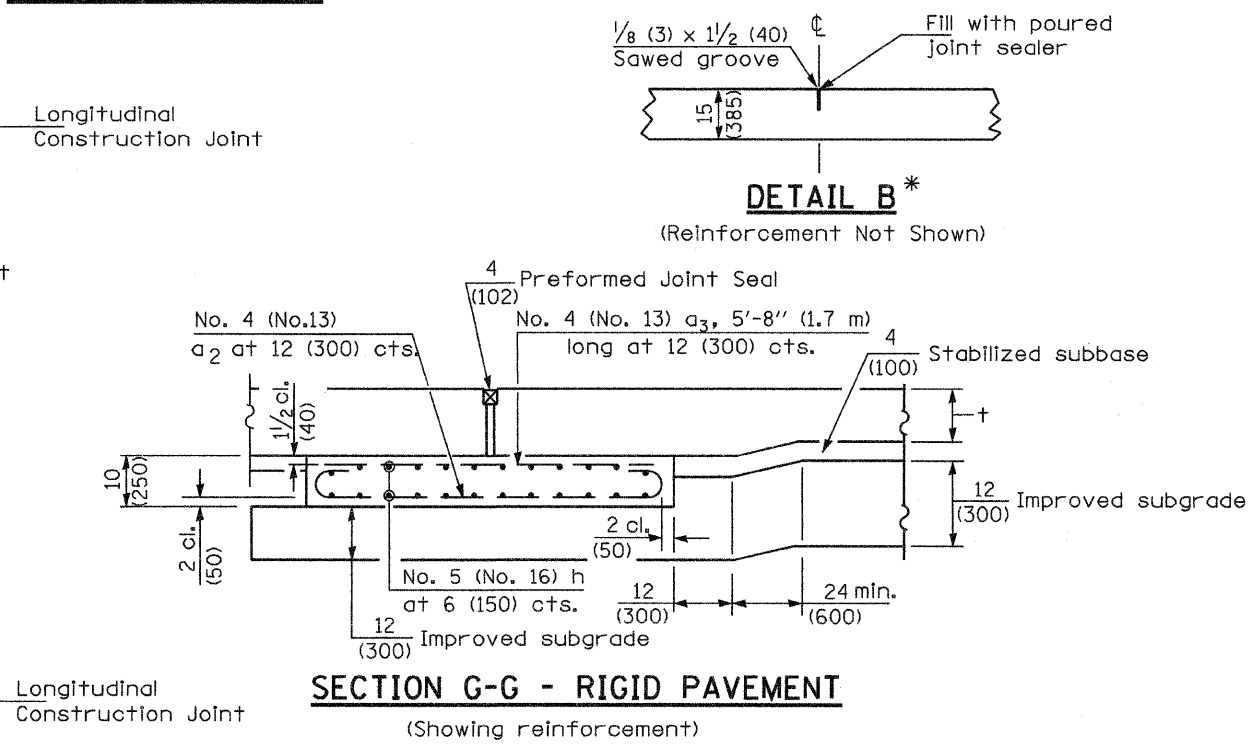


**PLAN - WITH SKEW**



**PLAN - WITHOUT SKEW**

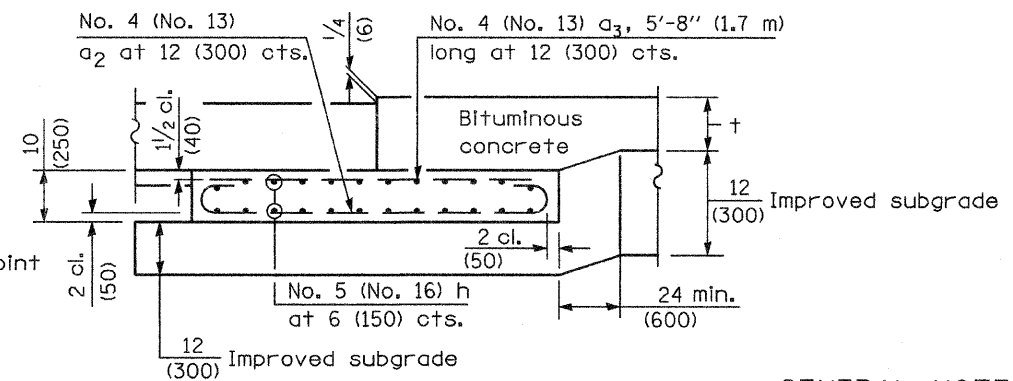
**NEW CONSTRUCTION**



**SECTION G-G - RIGID PAVEMENT**

(Showing reinforcement)

Rigid Pavement only:  
Wide Flange Beam Terminal Joint (See DETAIL AT BEAM - Standard 421101 or 421106) or 2 (50) Trans. Exp. Joint as detailed on Standard 420001.



**SECTION G-G - FLEXIBLE PAVEMENT**

(Showing reinforcement)

**GENERAL NOTES**

- THICKNESS-"t"=Thickness of Pavement.
- See Standard 421001 for reinforcement details not shown.
- See Standard 420001 for joint details not shown.
- All dimensions are in inches (millimeters) unless otherwise shown.

Illinois Department of Transportation

APPROVED January 1, 2008  
*Ralph E. Anderson*  
ENGINEER OF BRIDGES AND STRUCTURES

APPROVED January 1, 2008  
*Ken C. Han*  
ENGINEER OF DESIGN AND ENVIRONMENT

16-1-1 GENISSI

\* Saw  $\downarrow$  or lane edge if poured two or more lane widths at a time.  
\*\* Omit Reinforcement, tie bars and Long. sawed Jt. for Flexible Pavement.

DATE	REVISIONS
1-1-08	Switched units to English (metric). Moved rebar epoxy coat note to Standard Spec.
1-1-04	Rev. size of Trans. Exp. Jt. and soft converted metric reinf.

**BRIDGE APPROACH PAVEMENT**  
(Sheet 1 of 4)