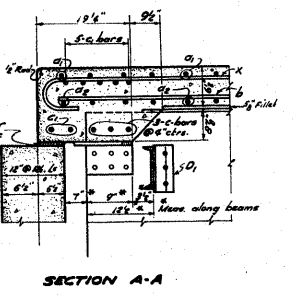
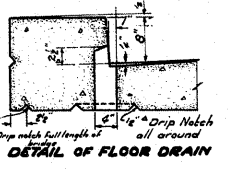
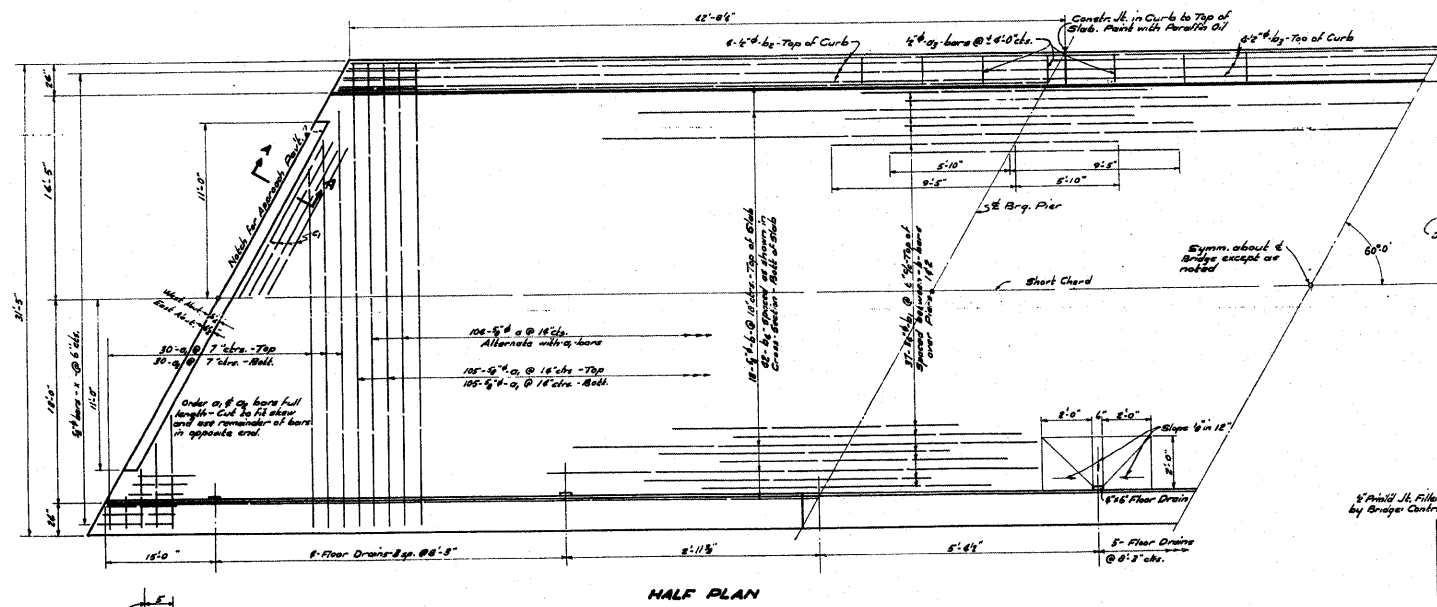
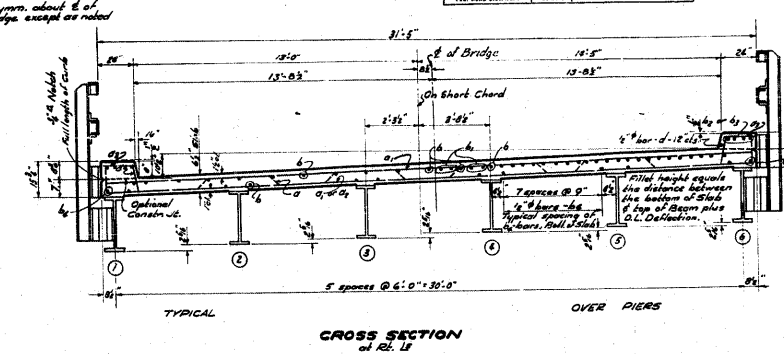
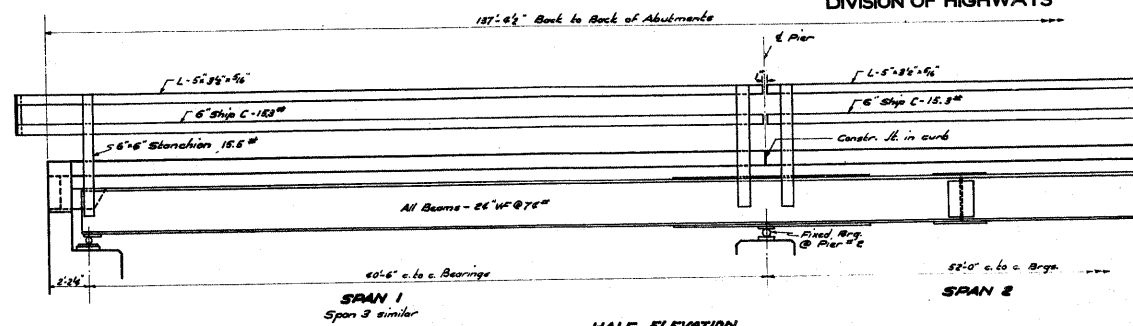


STATE OF ILLINOIS
DEPARTMENT OF PUBLIC WORKS & BUILDINGS
DIVISION OF HIGHWAYS

SECTION	COUNTY	SHEET NO.	SHEET NO.	SHEET NO.
5A	Calhoun	51	55	6 SHEETS



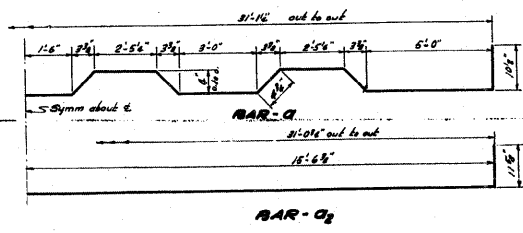
BILL OF MATERIAL
SUPER STRUCTURE

Bar	No.	Size	Length
a	104	5/8"	33'-0"
a1	280	5/8"	31'-0"
a2	30	5/8"	33'-0"
a3	60	5/8"	1'-9"
c	30	5/8"	6'-0"
c1	19	5/8"	38'-0"
b	90	5/8"	29'-0"
b1	74	5/8"	15'-3"
b2	32	5/8"	22'-6"
b3	16	5/8"	27'-0"
b4	20	5/8"	29'-0"
d	276	5/8"	1'-8"
x	104	5/8"	5'-0"

Class X Concrete Cu Yds. 101.4
Reinforcement Bars Lbs. 23160
* Structural Steel Lbs. 93860
Name Plate Each one

* Weight of Rollers, Bearing As, Load As, and Anchor Bolts included as Structural Steel. Est. Weight 6510 lbs.

STANDARD	COMPUTED	EXAMINED
CHECKED	7/1/00	19/00
DRAWN	7/1/00	19/00
CHECKED	7/1/00	19/00
SPECIAL	ASSEMBLED	APPROVED
CHECKED		



PROJ. 5-76(1)
FAS ROUTE 753 SEC 5A
FOX CREEK
CALHOUN COUNTY
STA. 675+15.5

FOR INFORMATION ONLY