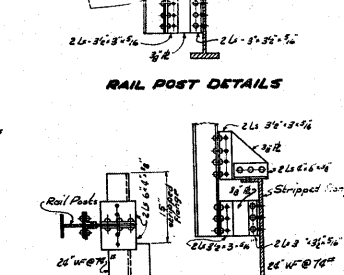
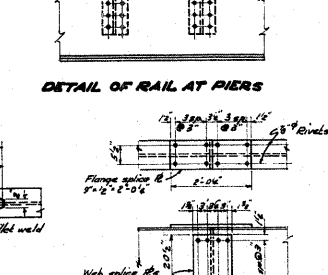
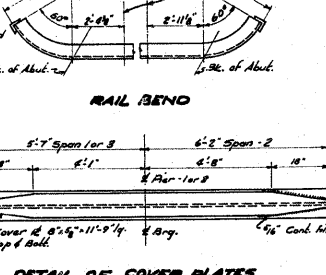
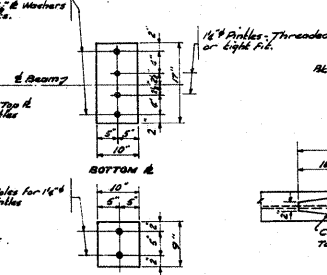
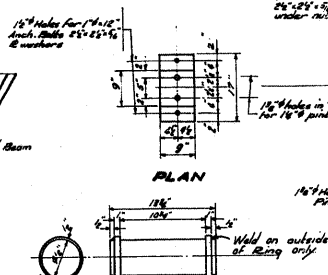
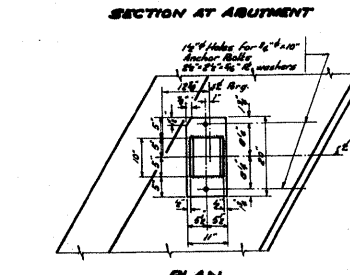
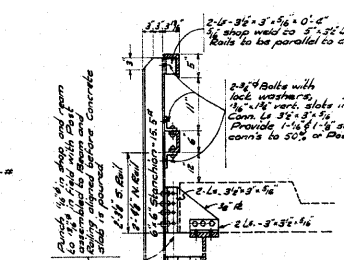
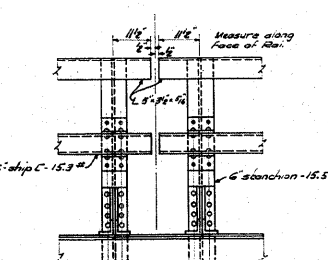
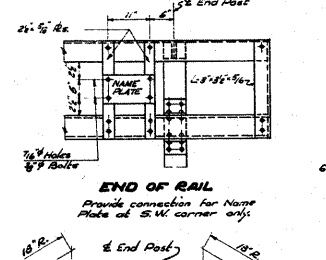
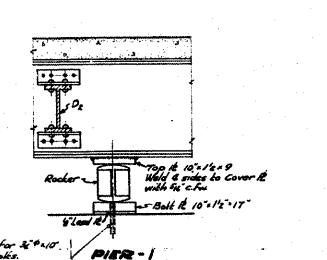
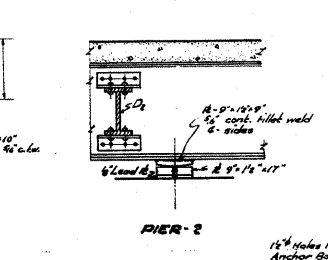
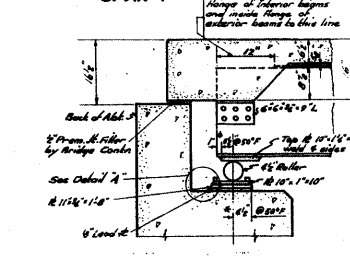
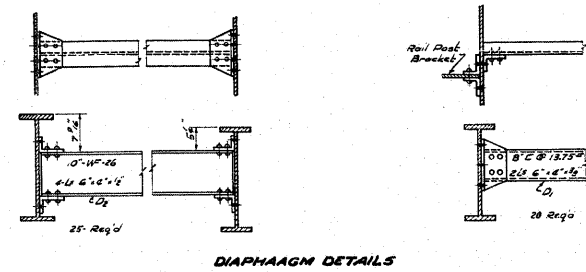
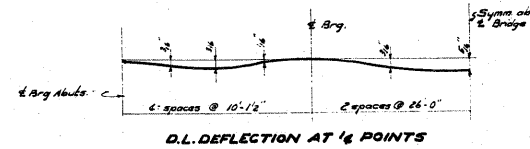
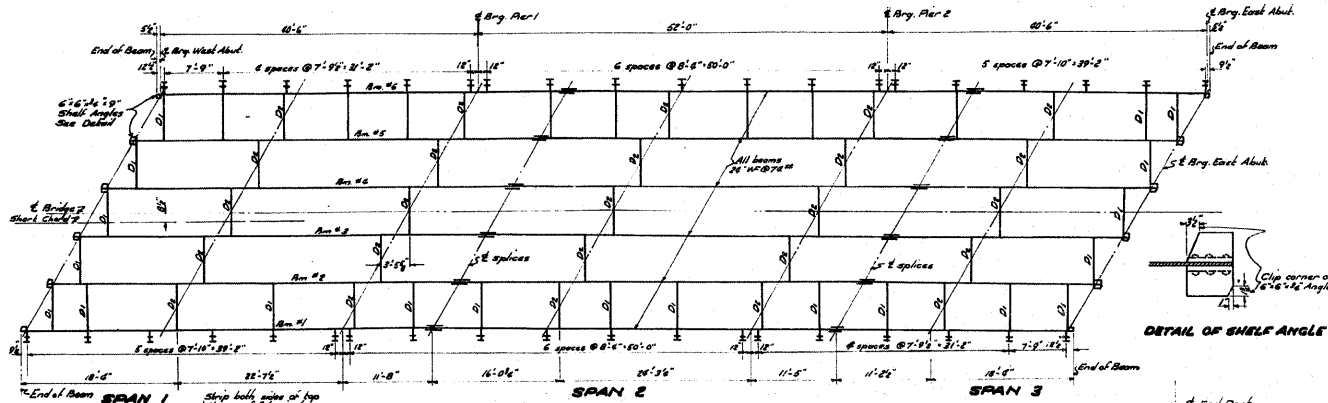
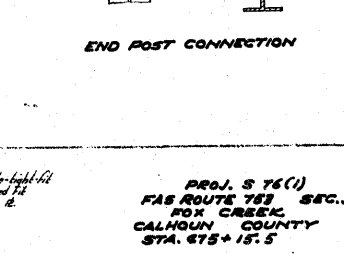
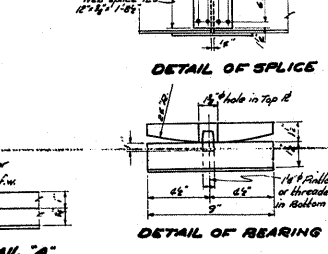
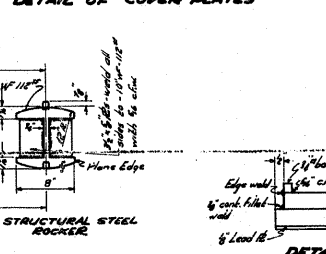
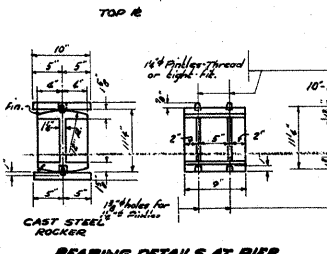
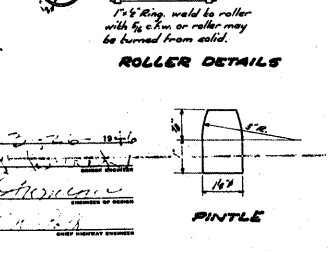


STATE OF ILLINOIS  
DEPARTMENT OF PUBLIC WORKS & BUILDINGS  
DIVISION OF HIGHWAYS

SECTION	COUNTY	SHEET NO.	TOTAL SHEETS
5A	Calhoun	51	54



STANDARD	COMPUTED	DESIGNED	REVISIONS
CHECKED	MAN T. P. ...	MAN T. P. ...	
DRAWN	M. G. ...	M. G. ...	
CHECKED	M. G. ...	M. G. ...	
SPECIAL	ASSEMBLED	APPROVED	



PROJ. S 75(1)  
FAS ROUTE 783 SEC. 5A  
FOX CREEK  
CALHOUN COUNTY  
STA. 675+15.5

FOR INFORMATION ONLY

FILE NAME	USER NAME	DESIGNED	REVISIONS	STATE OF ILLINOIS DEPARTMENT OF TRANSPORTATION	EXISTING STRUCTURE PLAN	F.A.P. RTE.	SECTION	COUNTY	TOTAL SHEETS	SHEET NO.
c:\projects\ed02305\plan\pln02305a.dgn	ovenbj	-	-	STATE OF ILLINOIS DEPARTMENT OF TRANSPORTATION	EXISTING STRUCTURE PLAN	304	5A-BR	CALHOUN	60	48
PLOT SCALE = 50.0000' / IN.		DRAWN	REVISIONS							
PLOT DATE = 9/11/2008		CHECKED	REVISIONS							
		DATE	REVISIONS							