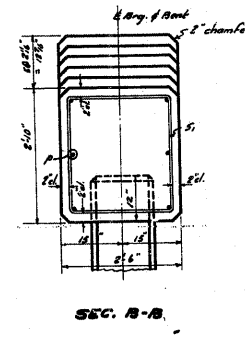
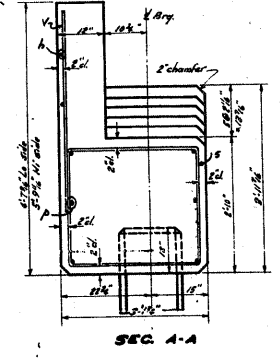
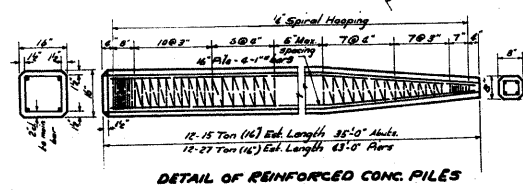
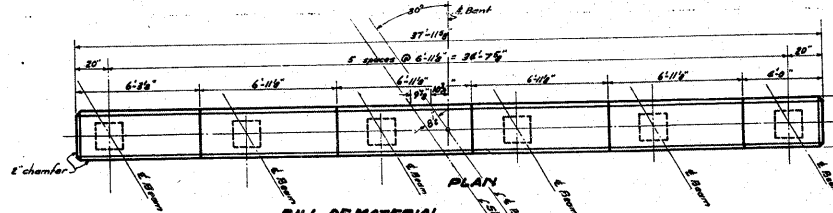
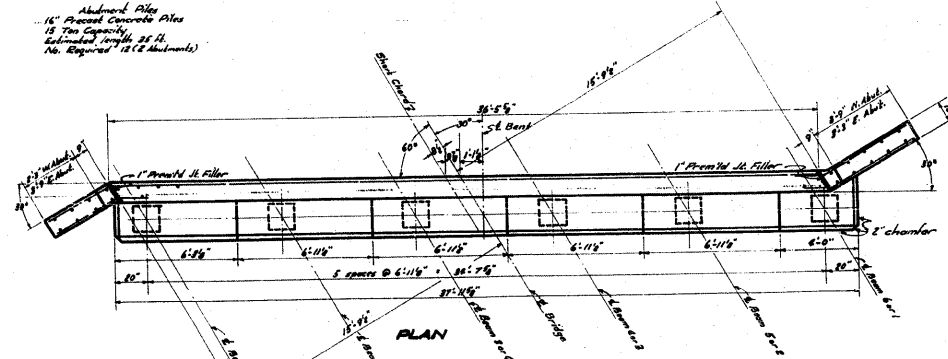
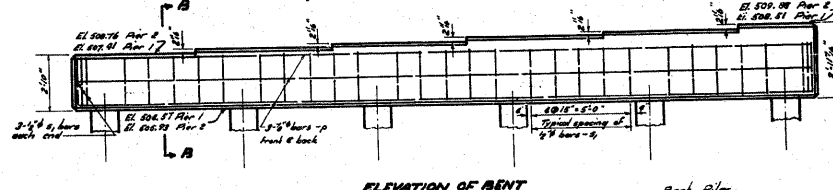
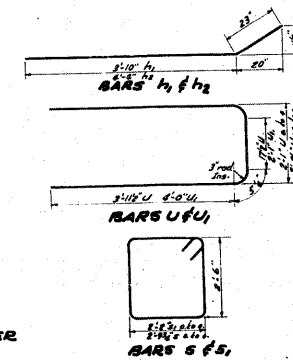
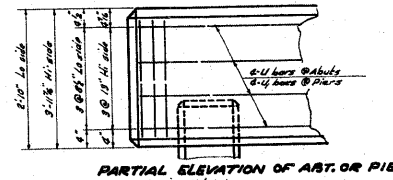
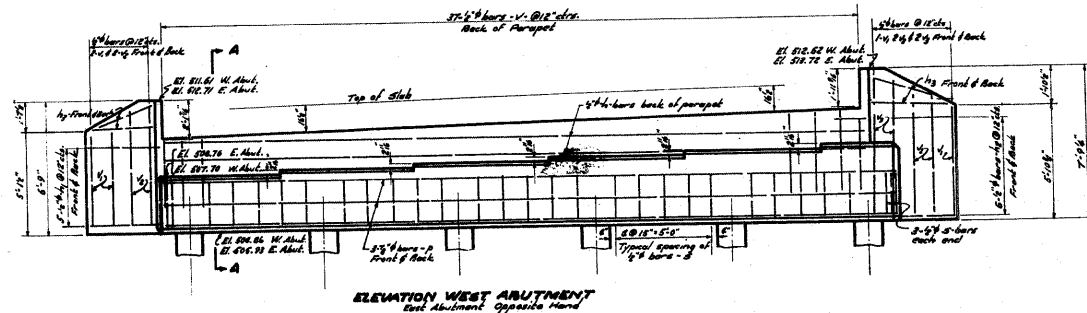


STATE OF ILLINOIS
DEPARTMENT OF PUBLIC WORKS & BUILDINGS
DIVISION OF HIGHWAYS

SECTION	COUNTY	TOTAL SHEETS	SHEET NO.
5A	Calhoun	57	57



BILL OF MATERIAL
ABUTMENTS & BENTS

Bar	No.	Size	Length	Shape
H	8	3/4"	35'-2"	—
H1	80	3/4"	6'-2"	—
H2	24	3/4"	6'-2"	—
H3	16	3/4"	3'-9"	—
H4	24	3/4"	37'-4"	—
A	60	3/4"	11'-6"	□
E	60	3/4"	10'-8"	□
U	16	3/4"	10'-8"	□
U1	16	3/4"	11'-0"	□
V	76	3/4"	3'-6"	—
V1	16	3/4"	5'-0"	—
V2	16	3/4"	6'-0"	—
V3	8	3/4"	7'-0"	—

Class of Concrete: C-2000, S-20, 2
Reinforcement Bars: A65, 360
Precast Conc. Piles (24' x 24') C-20, S-20
Precast Conc. Piles (24' x 24') C-20, S-20
Precast Conc. Pier Piles: S-20, 2

PROJ. 5 76(1)
FAS ROUTE 753 SEC. 5-A
FOX CREEK
CALHOUN COUNTY
STA. 678+15.5

COMPUTED	BY: <i>[Signature]</i>	EXAMINED	BY: <i>[Signature]</i>
CHECKED	BY: <i>[Signature]</i>	PASSED	BY: <i>[Signature]</i>
DRAWN	BY: <i>[Signature]</i>	APPROVED	BY: <i>[Signature]</i>
CHECKED	BY: <i>[Signature]</i>		
ASSEMBLED			
SPECIAL CHECKED			

FOR INFORMATION ONLY

FILE NAME =
c:\projects\ad2305\plan\p1n2305a.dgn

USER NAME = owinbj
PLOT SCALE = 50.0000' / IN.
PLOT DATE = 9/11/2008

DESIGNED -
DRAWN -
CHECKED -
DATE -

REVISED -
REVISED -
REVISED -
REVISED -

STATE OF ILLINOIS
DEPARTMENT OF TRANSPORTATION

EXISTING STRUCTURE PLAN

SCALE: SHEET NO. OF SHEETS STA. TO STA.

F.A.P. RTE.	SECTION	COUNTY	TOTAL SHEETS	SHEET NO.
304	5A-BR	CALHOUN	60	49
CONTRACT NO. 76886				
FED. ROAD DIST. NO. ILLINOIS FED. AID PROJECT				