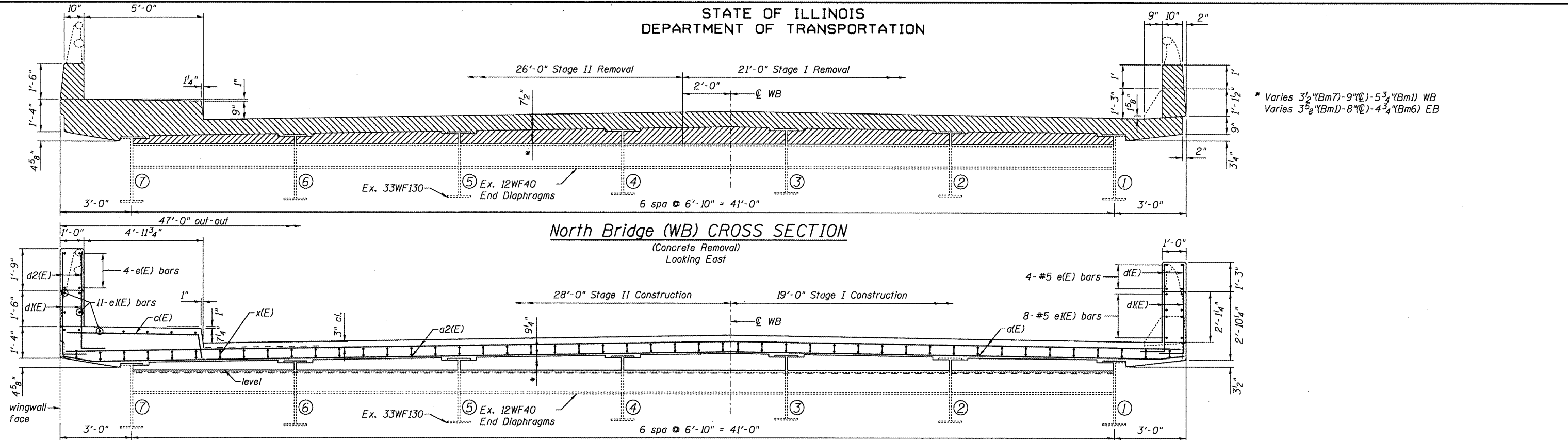
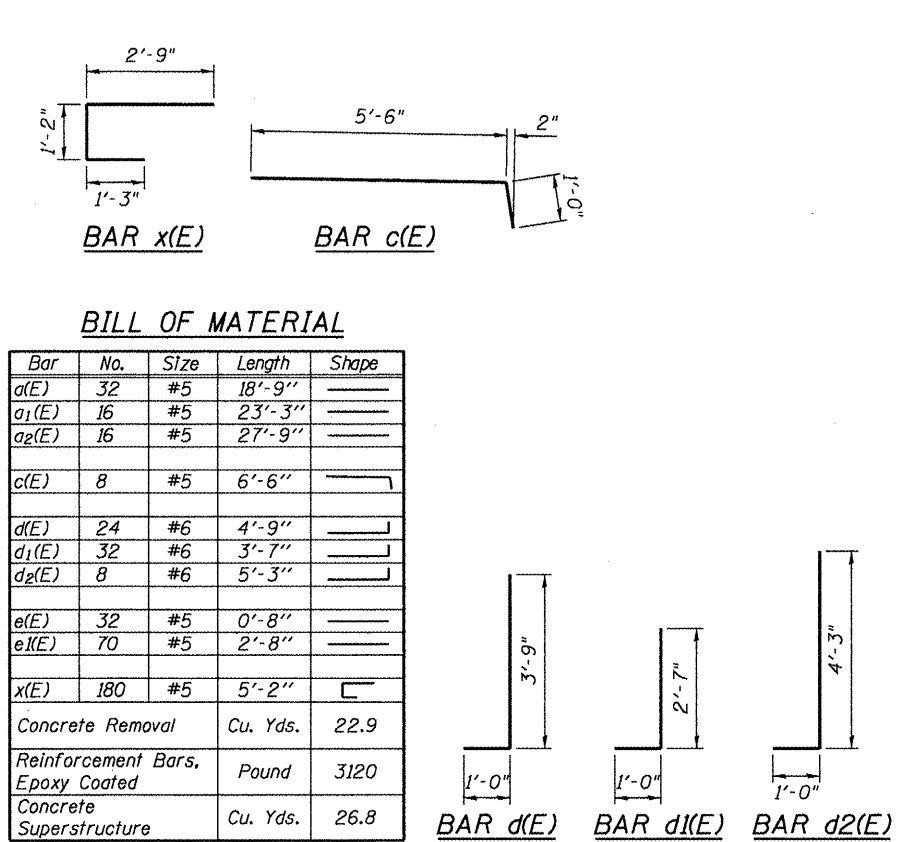


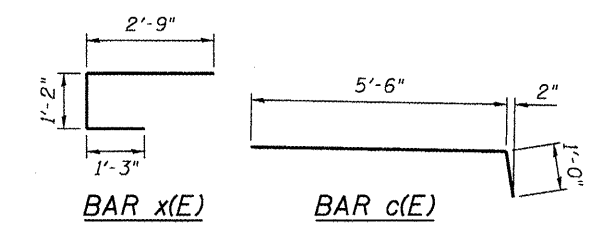
STATE OF ILLINOIS
DEPARTMENT OF TRANSPORTATION



North Bridge (WB) CROSS SECTION
(Concrete Removal)
Looking East

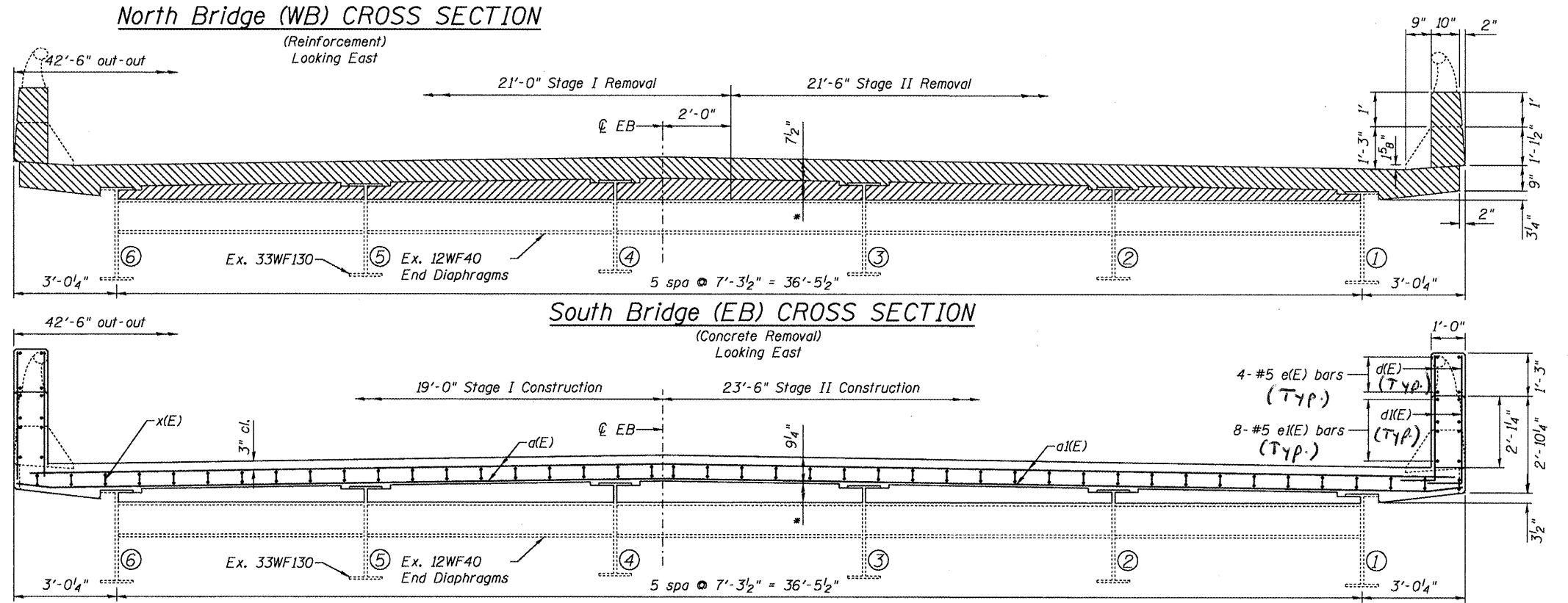
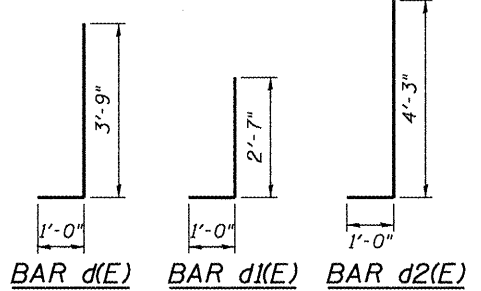


North Bridge (WB) CROSS SECTION
(Reinforcement)
Looking East

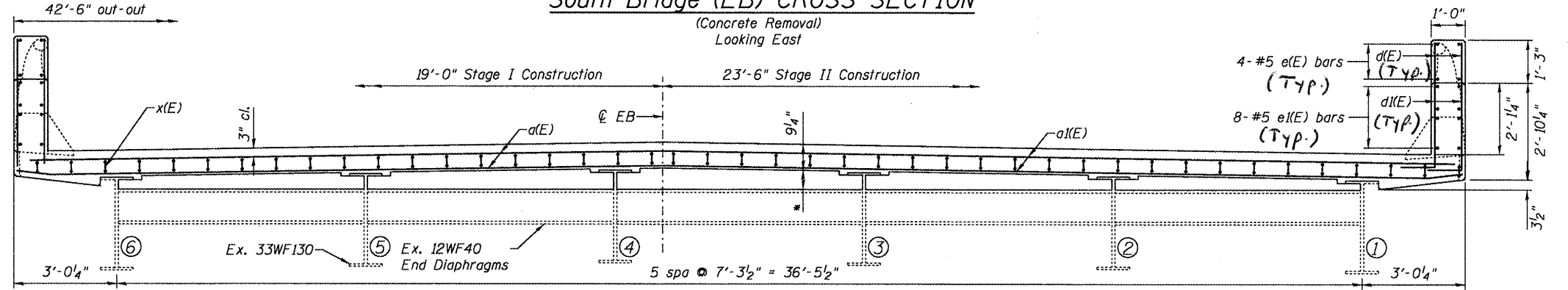


BILL OF MATERIAL

Bar	No.	Size	Length	Shape
a(E)	32	#5	18'-9"	
a1(E)	16	#5	23'-3"	
a2(E)	16	#5	27'-9"	
c(E)	8	#5	6'-6"	
d(E)	24	#6	4'-9"	
d1(E)	32	#6	3'-7"	
d2(E)	8	#6	5'-3"	
e(E)	32	#5	0'-8"	
e1(E)	70	#5	2'-8"	
x(E)	180	#5	5'-2"	
Concrete Removal		Cu. Yds.	22.9	
Reinforcement Bars, Epoxy Coated		Pound	3120	
Concrete Superstructure		Cu. Yds.	26.8	



South Bridge (EB) CROSS SECTION
(Concrete Removal)
Looking East



South Bridge (EB) CROSS SECTION
(Reinforcement)
Looking East

JOINT RETROFIT DECK CROSS SECTIONS
IL 111/140 OVER WOOD RIVER CREEK

DESIGNED J. Uehle	NOVEMBER 17, 2008
CHECKED B. Williams	EXAMINED
DRAWN J. Uehle	ENGINEER OF BRIDGE DESIGN
CHECKED B. Williams	PASSED
	ENGINEER OF BRIDGES AND STRUCTURES

SHEET NO. 3 9 SHEETS	F.A.P. RTE.	SECTION	COUNTY	TOTAL SHEETS	SHEET NO.
	785	132-4RS	MADISON	12	6
SN 060-0187 & 0190			CONTRACT NO. 76B89		
FED. ROAD DIST. NO. [ILLINOIS] FED. AID PROJECT					