

**WOOD POLE DETAIL**

**NOTES**

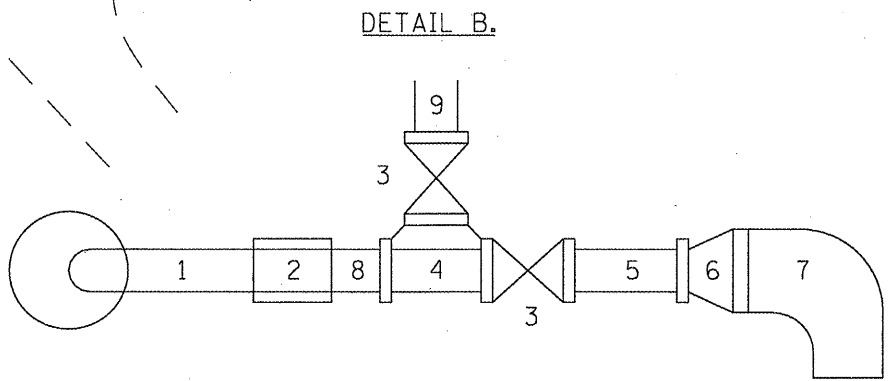
ALL STAINLESS STEEL IS 304L

THE ENGINEER SHALL IDENTIFY SOURCE OF EXISTING ELECTRICAL CIRCUIT FOR SHUT OFF PRIOR TO THE CONNECTION OF THE PROPOSED CIRCUIT.

THE PROPOSED CONNECTION THE EXISTING CONTROLLER CABINET AND PROPOSED STAINLESS STEEL WELL HEAD SHALL BE APPROVED BY THE ENGINEER AND INCLUDED IN THE PRICE OF ELECTRICAL CABLE IN CONDUIT.

EXISTING GRADE: 397.90

**VERIFY PHASE ROTATION AND MATCH EXIST. CONNECTION**



**LEGEND**

1. REUSE EXISTING 8" S.S PIPE.
2. NEW 8" S.S. COUPLING
3. NEW 8" S.S. KNIFE VALVE
4. NEW 8" S.S. TEE, FLANGE
5. NEW 8" S.S. PIPE
6. REUSE EXISTING REDUCER
7. REUSE EXISTING S.S. 90° ELBOW
8. NEW 8" S.S. PIPE
9. NEW 8" HDPE PIPE

FILE NAME =	USER NAME = #USERS	DESIGNED -	REVISOR -
#FILEL#		DRAWN -	REVISOR -
	PLOT SCALE = #SCALE#	CHECKED -	REVISOR -
	PLOT DATE = #DATE#	DATE -	REVISOR -

**STATE OF ILLINOIS  
DEPARTMENT OF TRANSPORTATION**

**SITE PLAN MISSOURI WELLS**

SCALE: \_\_\_\_\_ SHEET NO. \_\_\_\_\_ OF \_\_\_\_\_ SHEETS STA. \_\_\_\_\_ TO STA. \_\_\_\_\_

Rev.

F.A. RTE.	SECTION	COUNTY	TOTAL SHEETS	SHEET NO.
		ST. CLAIR	7	1
CONTRACT NO. 76C71			FED. ROAD DIST. NO. - ILLINOIS FED. AID PROJECT	

\* VARIOUS ROUTES  
\*\* DISTRICT 8 DEEP WELLS 2000-2