

STATE OF ILLINOIS  
DEPARTMENT OF TRANSPORTATION  
DIVISION OF HIGHWAYS

**PROPOSED  
HIGHWAY PLANS**

FAP ROUTE 817 (IL ROUTE 4 / 15)  
SECTION 421R-1

**RUNAROUND CONSTRUCTION  
ST. CLAIR COUNTY**

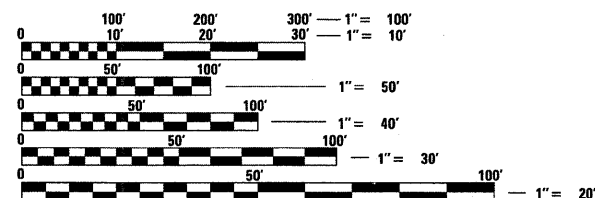
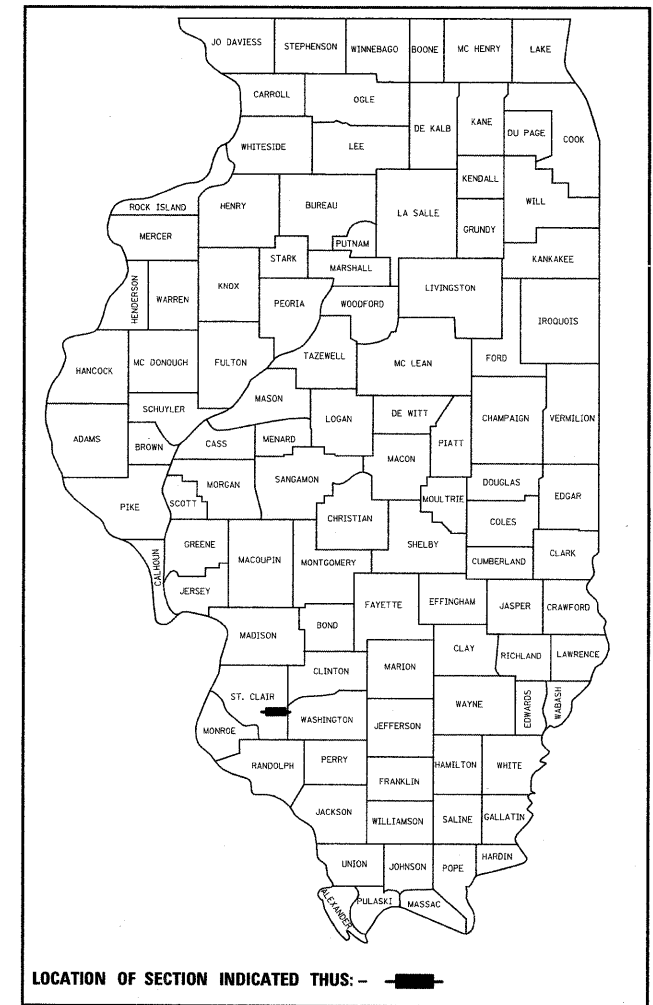
C-98-014-09

FOR INDEX OF SHEETS, SEE SHEET NO. 2

F.A.P. RTE.	SECTION	COUNTY	TOTAL SHEETS	SHEET NO.
817	421R-1	ST. CLAIR	29	1
FED. ROAD DIST. NO.	ILLINOIS	CONTRACT NO. 76C74		

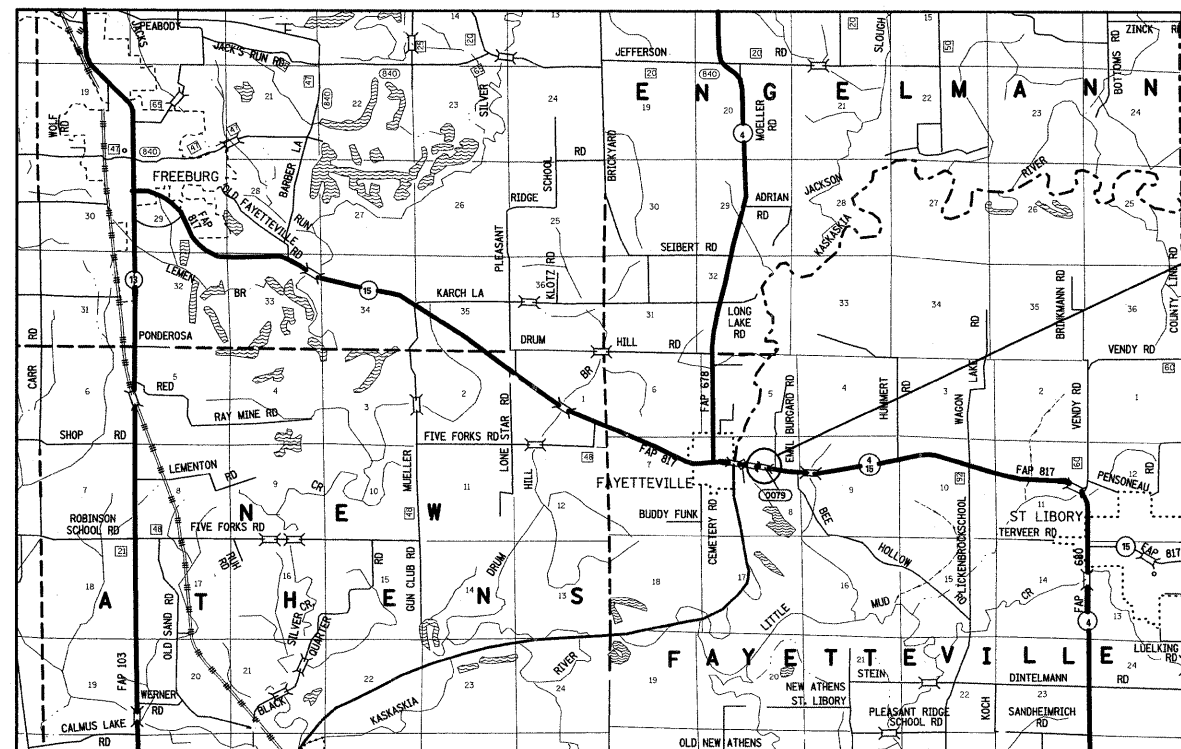
29+1=30

D-98-019-09



FULL SIZE PLANS HAVE BEEN PREPARED USING STANDARD ENGINEERING SCALES. REDUCED SIZED PLANS WILL NOT CONFORM TO STANDARD SCALES. IN MAKING MEASUREMENTS ON REDUCED PLANS, THE ABOVE SCALES MAY BE USED.

J.U.L.I.E.  
JOINT UTILITY LOCATION INFORMATION FOR EXCAVATION  
1-800-892-0123  
OR 811

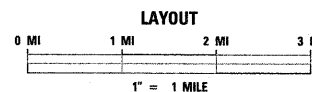


TEMPORARY RUNAROUND CONSTRUCTION  
TO MAINTAIN TRAFFIC DURING STRUCTURE  
REPLACEMENT PROJECT.  
BEGIN STATION 0+00 = STATION 145+00 (IL 4)  
END STATION 9+41.58 = STATION 154+00 (IL 4)

PROJECT ENGINEER: PATTI LeBEAU (618) 346-3179  
PROJECT MANAGER: ARTHUR MUEHLFELD (618) 346-3209

CONTRACT NO. 76C74

DESIGN DESIGNATION  
N/A



LATITUDE = 38.37649  
LONGITUDE = 89.78470

ADT = 5000 (2007)  
ADT = 6500 (2029)  
SU = 4.5%  
MU = 3.5%

GROSS LENGTH = 0.18 MI  
NET LENGTH = 0.18 MI

STATE OF ILLINOIS  
DEPARTMENT OF TRANSPORTATION  
DIVISION OF HIGHWAYS

SUBMITTED Dec 18, 2008  
Mr. [Signature]  
DEPUTY DIRECTOR OF HIGHWAYS, REGION 5 ENGINEER

January 30, 2009  
Charles J. [Signature]  
ENGINEER OF DESIGN AND ENVIRONMENT

January 30, 2009  
Christine M. [Signature]  
DIRECTOR OF HIGHWAYS, CHIEF ENGINEER

**PRINTED BY THE AUTHORITY  
OF THE STATE OF ILLINOIS**