

LEGEND FOR EXISTING TOPOGRAPHIC SYMBOLS

TRAFFIC SIGNAL HANDHOLE	□	DRAINAGE FLOW LINE
TRAFFIC SIGNAL GULFBOX	○	RIP RAP
TRAFFIC SIGNAL HANDHOLE	□	HEADWALL
TRAFFIC SIGNAL SIGNAL POST	○	CULVERT END SECTION
TRAFFIC SIGNAL STEEL MAST ARM	○	DRAINAGE MANHOLE
TRAFFIC SIGNAL COMBINED MAST ARM	○	INLET
TRAFFIC SIGNAL PEDESTRIAN PUSH BUTTON	⊙	ROADWAY DITCH FLOW
TRAFFIC SIGNAL WOODEN POLE	⊙	VEGETATION LINE
TRAFFIC SIGNAL VEHICLE DETECTION PRIORITY	⊙	STUMP
TRAFFIC SIGNAL VEHICLE DETECTION MAGNET	⊙	SHRUB
TRAFFIC SIGNAL JUNCTION BOX	⊙	EVERGREEN TREE
TRAFFIC SIGNAL CONTROLLER	⊙	DECIDUOUS TREE
TRAFFIC SIGNAL HEAVY DUTY HANDHOLE	⊙	WOODS/BUSH PATTERN
RAILROAD CANTILEVER MAST ARM	⊙	TRAFFIC SIGN
RAILROAD CROSSBUCK	⊙	GAURDRAIL POST
RAILROAD TRACK PATTERN	⊙	GAURDRAIL PATTERN
RAILROAD ABANDON PATTERN	⊙	FIELD LINE
RAILROAD CROSSGATE	⊙	LEVEE/NOISE BARRIER
RAILROAD CONTROL BOX	⊙	FENCE PATTERN
RAILROAD FLASHING SIGNAL	⊙	MAIL BOX
TELEPHONE SPLICE BOX ABOVE GROUND	⊙	ADVERTISING SIGN
UTILITY POWER POLE	⊙	MARSH
TELEPHONE POLE	⊙	LIGHTING HANDHOLE
UTILITY TRAFFIC SIGNAL	⊙	LIGHTING POWER POLE
UTILITY LIGHT POLE	⊙	LIGHTING JUNCTION BOX
FIRE HYDRANT	⊙	LIGHTING HEAVYDUTY HANDHOLE
UTILITY MANHOLE	⊙	LIGHTING CONTROLLER
UTILITY TELEPHONE POLE	⊙	LIGHTING PULL POINT
UTILITY GUY POLE	⊙	HIGHWAY LIGHTING ELECTRICAL GROUND
PIPELINE WARNING SIGN	⊙	HIGHWAY LIGHTING SINGLE UNIT
UTILITY HANDHOLE	⊙	HIGHWAY LIGHTING DOUBLE UNIT
UTILITY SPLICE ABOVE GROUND	⊙	EXISTING CONCRETE BARRIER
UTILITY JUNCTION BOX	⊙	EXISTING CREEK OR DITCH
UTILITY HEAVY DUTY HANDHOLE	⊙	EXISTING EDGE OF PAVEMENT
UTILITY DOUBLE HANDHOLE	⊙	
UTILITY CONTROLLER	⊙	
UTILITY WATER METER	⊙	

RIGHT OF WAY LEGEND

	SECTION CORNERS		QUARTER SECTION CORNERS
---	EXISTING CENTERLINE	---	EXISTING RIGHT OF WAY LINE
---	EXISTING RIGHT OF WAY LINE	---	FORMER RIGHT OF WAY LINE
---	EXISTING IDOT EASEMENT LINE	---	EXISTING EASEMENT LINE
---	BUILDING SETBACK LINE	---	EXISTING ACCESS CONTROL LINE
AC	EXISTING ACCESS CONTROL LINE	AC	EXISTING RIGHT OF WAY & PROPOSED ACCESS CONTROL LINE
AC	PROPOSED ACCESS CONTROL LINE	---	PROPOSED CENTERLINE
---	PROPOSED RIGHT OF WAY LINE	---	PROPOSED TEMPORARY EASEMENT LINE
---	PROPOSED PERMANENT EASEMENT LINE	---	SECTION LINE
---	QUARTER SECTION LINE	---	QUARTER QUARTER SECTION LINE
---	PROPERTY (DEED) LINE	---	APPROXIMATE PROPERTY LINE
---	MEASURED DIMENSION	---	RECORDED DIMENSION
---	FOUND STONE	○	FOUND IRON PIPE OR IRON ROD AT CORNER UNLESS OTHERWISE NOTED
---	SET 5/8 INCH IRON ROD WITH PLASTIC CAP IDENTIFIED BY SURVEYORS LICENSE NUMBER AT CORNER UNLESS OTHERWISE NOTED	●	PERMANENT SURVEY MONUMENT, I.D.O.T. STD. 667101 (TO BE SET BY OTHERS)
---	SET 5/8 INCH IRON ROD AS SURVEY CONTROL UNLESS OTHERWISE NOTED	▲	FOUND CUT CROSS
---	FOUND CUT CROSS	+	SET CUT CROSS
---	SAME OWNERSHIP	---	EXISTING BUILDING
---	STAKING OF PROPOSED RIGHT OF WAY CORNERS. SET 5/8 INCH METAL ROD WITH DIVISION OF HIGHWAY SURVEY ALUMINUM CAP TO MONUMENT THE POSITION SHOWN. IDENTIFIED BY INSCRIPTION DATA AND SURVEYORS LICENSE NUMBER. (PROPOSED RIGHT OF WAY CORNERS SET IN CULTIVATED AREAS SHALL BE A MINIMUM OF 20 INCHES BELOW THE GROUND SURFACE).	---	

LEGEND FOR ABBREVIATIONS

A/C	ACCESS CONTROL
AC	ACRE
AVE	AVENUE
BK	BOOK
BLVD	BOULEVARD
C	CENTERLINE
CH	COUNTY HIGHWAY
Ch	CHAIN
DB	DEED BOOK
E	EAST
EX	EXISTING
FA	FEDERAL AID
FAI	FEDERAL AID INTERSTATE
FAP	FEDERAL AID PRIMARY
FAS	FEDERAL AID SECONDARY
FAUS	FEDERAL AID URBAN SECONDARY
FND	FOUND
ha	HECTARE
IP	IRON PIPE
IR	IRON ROD
LT	LEFT
m	METER
m ²	SQUARE METERS
N	NORTH
N & BC	NAIL AND BOTTLE CAP
N & C	NAIL AND CAP
N & W	NAIL AND WASHER
NE	NORTHEAST
NW	NORTHWEST
PB	PLAT BOOK
PG	PAGE
POB	POINT OF BEGINNING
POC	POINT OF COMMENCEMENT
POT	POINT OF TANGENT
PL	PROPERTY LINE
PR	PROPOSED
RD	ROAD
ROW	RIGHT OF WAY
RR	RAILROAD
RRS	RAILROAD SPIKE
RT	RIGHT
RTE	ROUTE
S	SOUTH
SBI	STATE BOND ISSUE
SE	SOUTHEAST
SQ FT	SQUARE FEET
SR	STATE ROUTE
ST	STREET
STA	STATION
SMK	SURVEY MARKER
SW	SOUTHWEST
TWP	TOWNSHIP
TR	TOWNSHIP ROAD
USGS	U.S. GEOLOGICAL SURVEY
W	WEST

SPACE RESERVED FOR RECORDING OFFICER

PROPOSED PARCEL NUMBER LEGEND

8001001	PROPOSED FEE SIMPLE ACQUISITION
8001001PE	PROPOSED PERMANENT EASEMENT
8001001TE	PROPOSED TEMPORARY EASEMENT
8001001DED	PROPOSED DEDICATION
8001001AC	PROPOSED ACCESS CONTROL LINE

CURVE ABBREVIATIONS

PC	POINT OF CURVATURE
PI	POINT OF INTERSECTION
PT	POINT OF TANGENCY
PRC	POINT OF REVERSE CURVE
PCC	POINT OF COMPOUND CURVE
CB	CHORD BEARING
R	RADIUS OF CURVE
L	CURVE LENGTH
CB	CHORD BEARING
C	CHORD LENGTH
D	DEGREE OF CURVE
e	EXTERNAL
Δ	CENTRAL ANGLE

PREPARED BY:



SHERRILL ASSOCIATES, INC.
Engineers - Surveyors - Planners

Professional Design Firm Number 184-001238
20 Edwardsville Professional Park 2727 Lemay Ferry Road
Edwardsville, IL 62025 St. Louis, MO 63125

GREGORY S. McVICAR, PLS NO. 3512
LICENSE EXPIRATION DATE: 11/30/2010

TOTAL HOLDING AREA SOURCE TABLE

1	AREA ACCORDING TO THE SURVEY PERFORMED BY THE CONSULTANT.
2	AREA LISTED IN RECORDED DEED.
3	AREA ACCORDING TO A RECORDED SUBDIVISION PLAT.
4	AREA ACCORDING TO A PLAT OF SURVEY.
5	AREA CALCULATED FROM RECORDED DEEDS OR TITLE COMMITMENTS - NOT SURVEYED.
6	AREA ACCORDING TO COUNTY TAX MAPS AND COUNTY ASSESSMENT RECORDS.
7	AREA ACCORDING TO OTHER RECORDS, SEE NOTE ON THE PLAT OF HIGHWAYS.

TOPOGRAPHIC STATEMENT

THE TOPOGRAPHY SHOWN HEREON WAS PROVIDED TO THE SURVEYOR BY THE ILLINOIS DEPARTMENT OF TRANSPORTATION. THE SURVEYOR VISUALLY FIELD VERIFIED THE EXISTENCE OF THE TOPOGRAPHY SHOWN HEREON. NO ADDITIONAL ITEMS WERE LOCATED IN THE FIELD BY THE SURVEYOR.

BASIS OF COORDINATE & BEARING STATEMENT

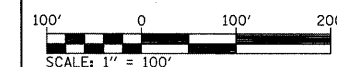
THE PROJECT COORDINATES AND BASIS OF BEARING WERE ESTABLISHED BY THE ILLINOIS DEPARTMENT OF TRANSPORTATION. THE GPS SURVEY WAS PERFORMED DURING THE MONTH OF AUGUST, 2006.

BEARINGS ARE BASED ON THE ILLINOIS STATE PLANE COORDINATE SYSTEM, WEST ZONE, NAD 83 (1997). THE DISTANCES AS SHOWN HEREON, EXCEPT AS NOTED, ARE GROUND DISTANCES. THE AVERAGE GRID FACTOR USED FOR THIS PLAT IS 0.99994015782. THE GRID COORDINATES WHEN DIVIDED BY THE AVERAGE GRID FACTOR WILL PROVIDE THE GROUND COORDINATES

PROJECT COORDINATES ARE BASED ON THE ILLINOIS STATE PLANE COORDINATE SYSTEM, WEST ZONE, NAD 83 (1997) GROUND COORDINATES. TWO MILLION HAS BEEN TRUNCATED FROM THE EASTING TO DISTINGUISH PROJECT COORDINATES AS GROUND COORDINATES.

PROJECT COORDINATES
STATE PLANE COORDINATE ZONE: IL WEST ZONE NAD 83 (1997)
VERTICAL DATUM: NAVD 88
GEOID MODEL GEOID 03
AVERAGE GRID FACTOR: 0.99994015782

ILLINOIS DEPARTMENT OF TRANSPORTATION
PLAT OF HIGHWAYS
FAP ROUTE 817 (IL 4/IL 15)
SECTION 421B-1
ST. CLAIR COUNTY
JOB NO. R-98-010-09



SHEET 2 OF 3

ILLINOIS DEPARTMENT OF TRANSPORTATION
DIVISION OF HIGHWAYS/REGION 5/DISTRICT 8
1102 EASTPORT PLAZA DRIVE
COLLINGSVILLE, ILLINOIS 62234-6198

F.A.P. RTE.	SECTION	COUNTY	TOTAL SHEETS	SHEET NO.
817	421B-1	ST. CLAIR	29	14
CONTRACT NO. 76885				
FED. ROAD DIST. NO. ILLINOIS FED. AID PROJECT				