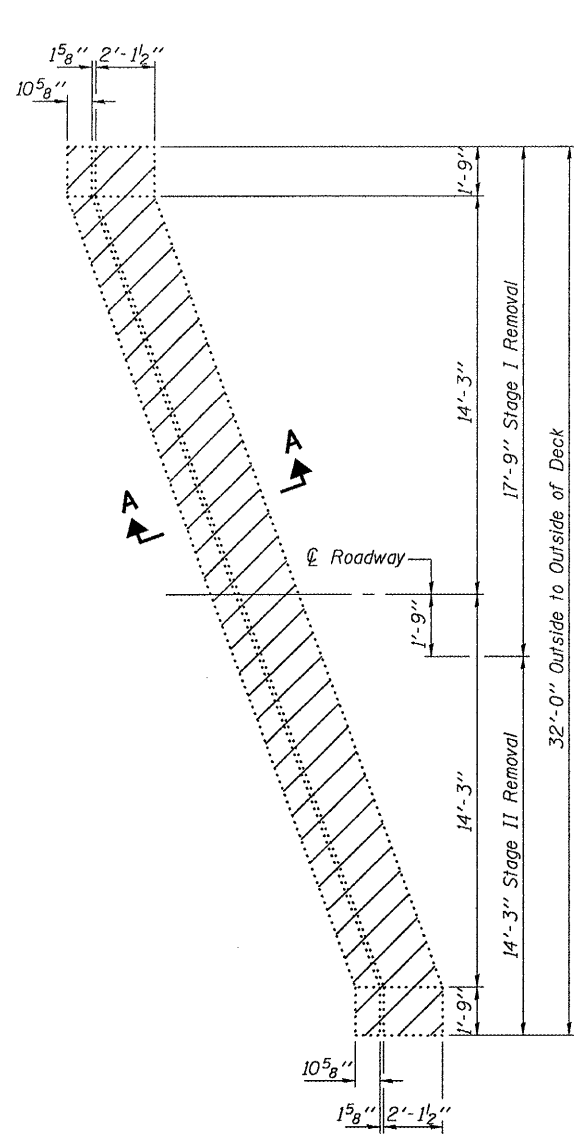
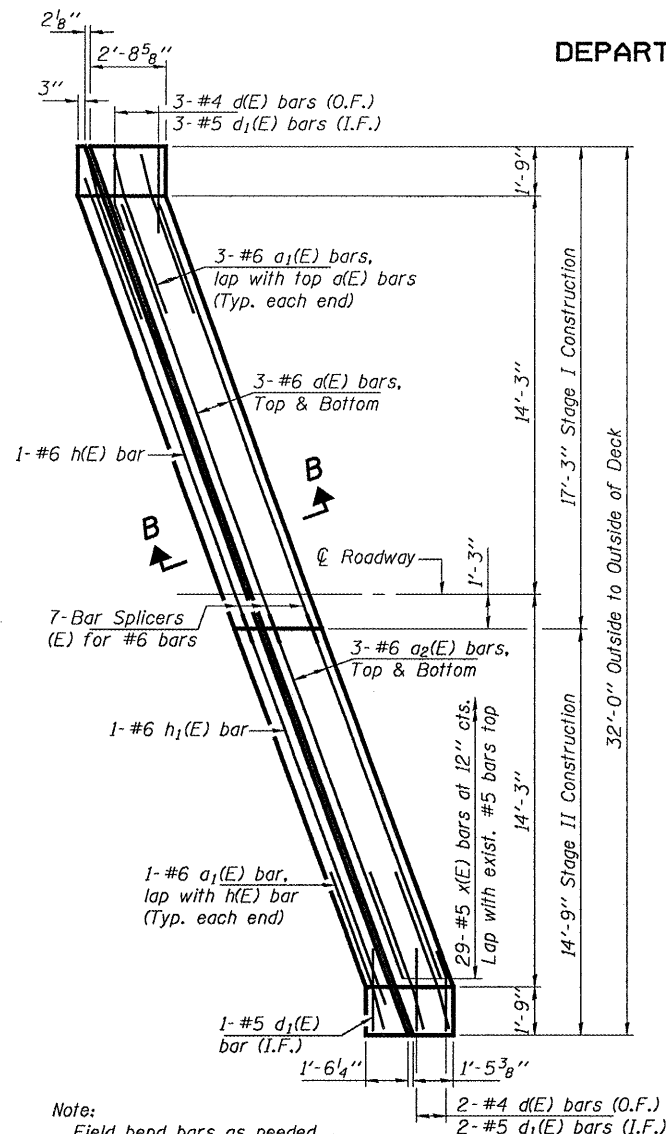


STATE OF ILLINOIS  
DEPARTMENT OF TRANSPORTATION



**PARTIAL PLAN AT W. ABUT.**

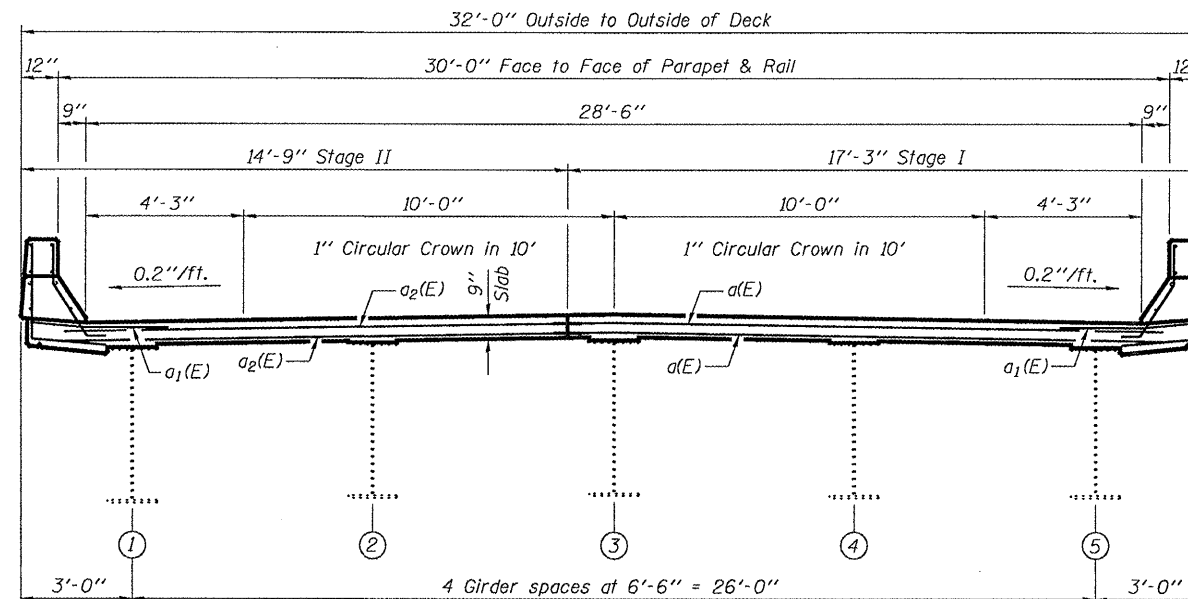
(Showing Concrete Removal)  
E. Abut. similar by 180° rotation



**PARTIAL PLAN AT W. ABUT.**

(Showing Reinforcement)  
E. Abut. similar by 180° rotation

Note:  
Field bend bars as needed.

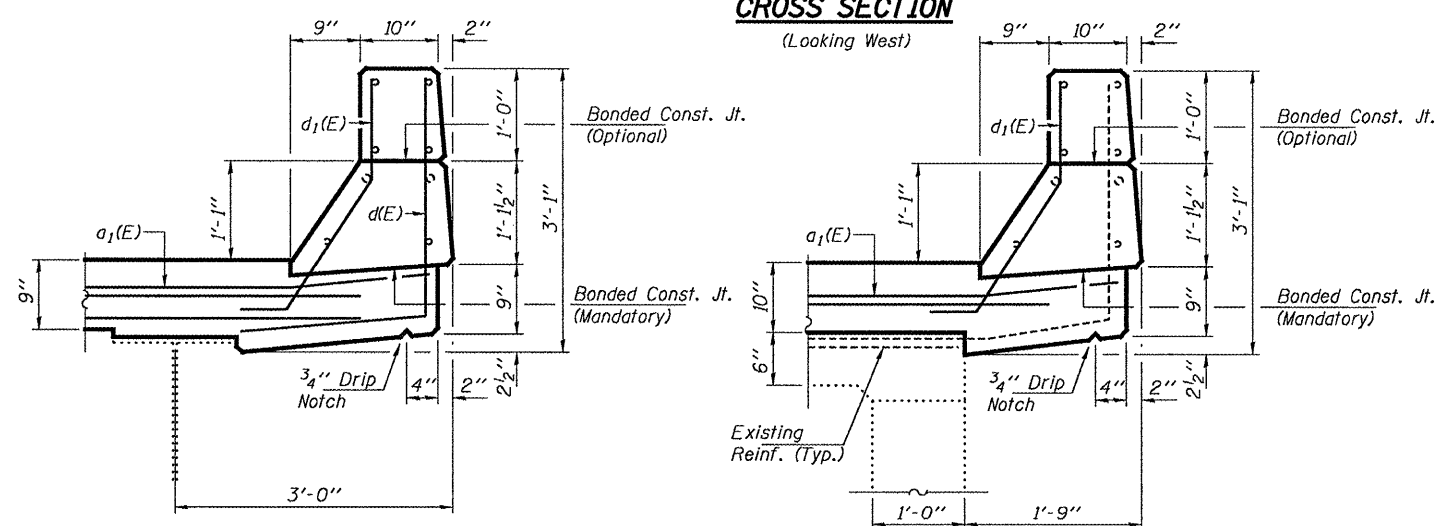


**SECTION THRU PARAPET**

(Bridge Side)

**CROSS SECTION**

(Looking West)



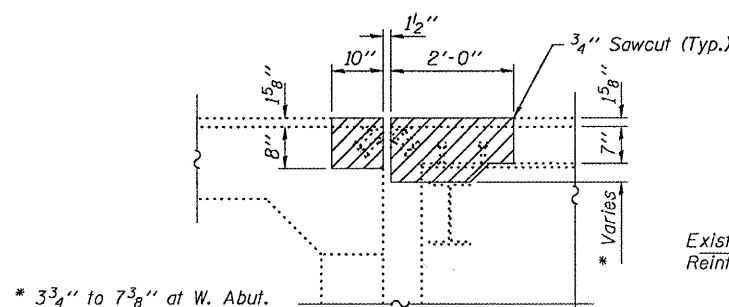
**SECTION THRU PARAPET**

(Approach Side)

**BILL OF MATERIAL**

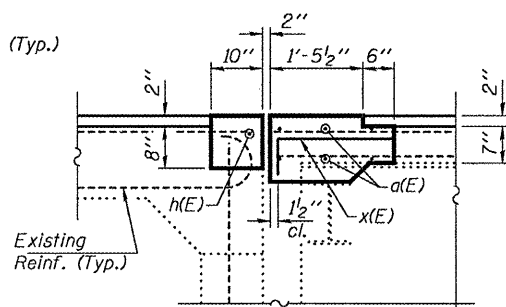
Bar	No.	Size	Length	Shape
a(E)	12	#6	17'-1"	—
a1(E)	16	#6	6'-0"	—
a2(E)	12	#6	14'-6"	—
d(E)	10	#4	4'-7"	J
d1(E)	12	#5	3'-3"	J
h(E)	2	#6	17'-1"	—
h1(E)	2	#6	14'-6"	—
x(E)	58	#5	2'-5"	┌
Concrete Removal			Cu. Yd.	8.1
Concrete Superstructure			Cu. Yd.	7.9
Reinforcement Bars, Epoxy Coated			Pound	1030

**REPAIR DETAILS**  
**F.A.S. 815 (CH-20)**  
**OVER F.A.I. 64**  
**SN 097-0044**



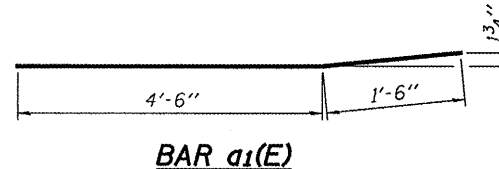
**SECTION A-A**

\* 3 3/4" to 7 3/8" at W. Abut.  
3 3/4" to 6 1/4" at E. Abut.

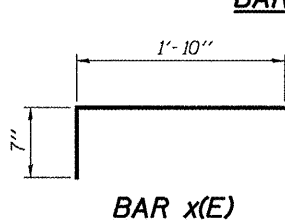


**SECTION B-B**

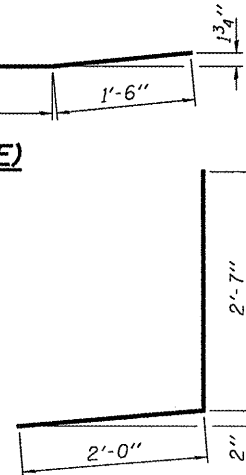
Note:  
Dimensions are based on a Rolled Rail Strip Seal Joint. If the Contractor elects to use the Weld Rail Strip Seal Joint, deck dimensions may require adjustments to satisfy the details on sheet 4 of 5.



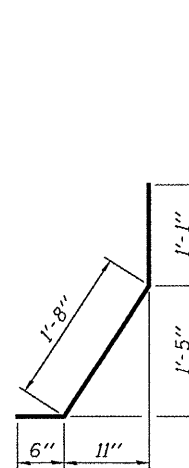
**BAR a1(E)**



**BAR x(E)**



**BAR d(E)**



**BAR d1(E)**

DESIGNED	AJB
CHECKED	ATH
DRAWN	Kyle M. Steffen
CHECKED	AJB ATH

JANUARY 13, 2009  
EXAMINED *Carl P. ...*  
PASSED *Ralph E. Anderson*  
ENGINEER OF STRUCTURAL SERVICES  
ENGINEER OF BRIDGES AND STRUCTURES

SHEET NO. 2 5 SHEETS	F.A.S. RTE. 815	SECTION D9 CM BRIDGE REPAIR FY09-1	COUNTY WHITE	TOTAL SHEETS 16	SHEET NO. 6
	FED. ROAD DIST. NO.	ILLINOIS	FED. AID PROJECT	CONTRACT NO. 78094	