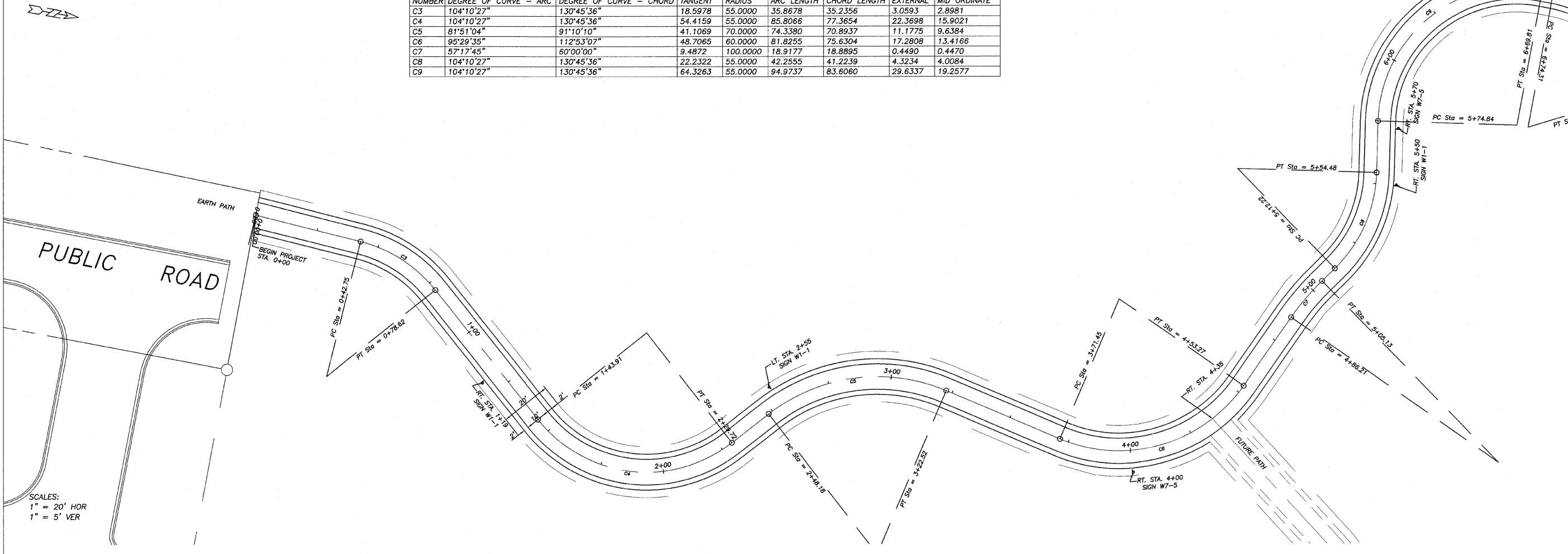


NUMBER	DEGREE OF CURVE - ARC	DEGREE OF CURVE - CHORD	TANGENT	RADIUS	ARC LENGTH	CHORD LENGTH	EXTERNAL	MID ORDINATE
C3	104°10'27"	130°45'36"	18.5978	55.0000	35.8678	35.2356	3.0593	2.8981
C4	104°10'27"	130°45'36"	54.4159	55.0000	85.8066	77.3654	22.3698	15.9021
C5	81°51'04"	91°10'10"	41.1069	70.0000	74.3380	70.8937	11.1775	9.6384
C6	95°29'35"	112°53'07"	48.7065	60.0000	81.8255	75.6304	17.2808	13.4166
C7	57°17'45"	60°00'00"	9.4872	100.0000	18.9177	18.8895	0.4490	0.4470
C8	104°10'27"	130°45'36"	22.2322	55.0000	42.2555	41.2239	4.3234	4.0084
C9	104°10'27"	130°45'36"	64.3263	55.0000	94.9737	83.6060	29.6337	19.2577



SCALES:
1" = 20' HOR
1" = 5' VER

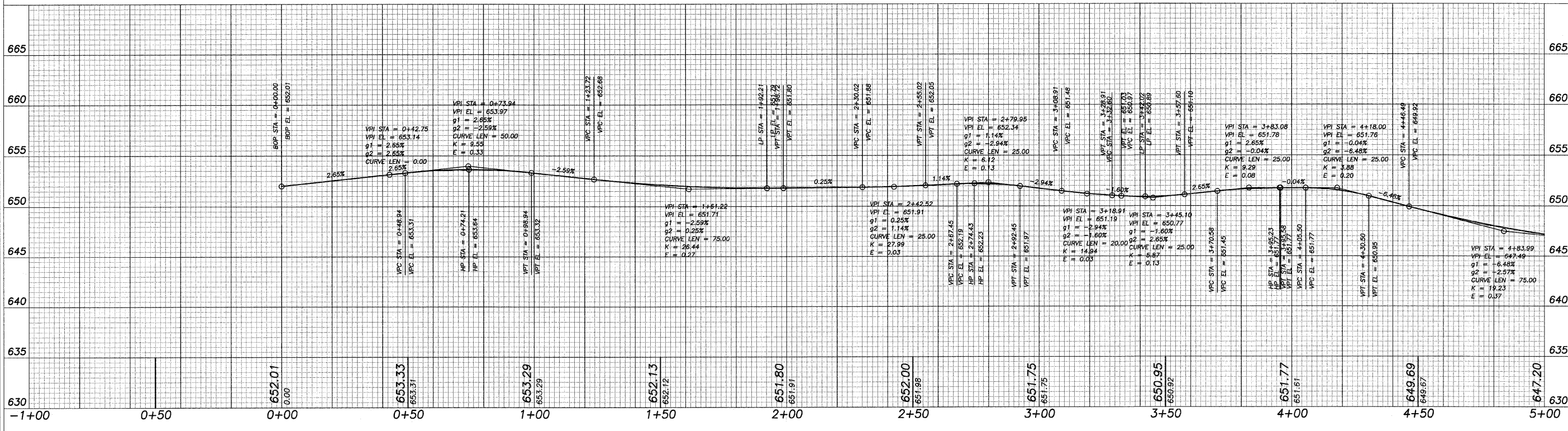
REVISIONS

REVISION	DATE	BY	CHK
	20	OCT	DB

DESIGNED BY: DAB
DRAWN BY: BCS
CHECKED BY: [blank]
SURVEYED BY: [blank]
BOOK NO: [blank]

wendler
GROUND-BREAKING SOLUTIONS
engineers - surveyors - scientists
www.wendlergs.com ph: 815.286.2261
Illinois Professional Design Firm No. 184-000848

PAVING PLANS
OF
SHARED MULTI-USE PATH
FOR
STERLING PARK DISTRICT



SHEET TITLE
PLAN & PROFILE

JOB NUMBER
204005

DATE
06/10/2008

SHEET NO.
3 of 15