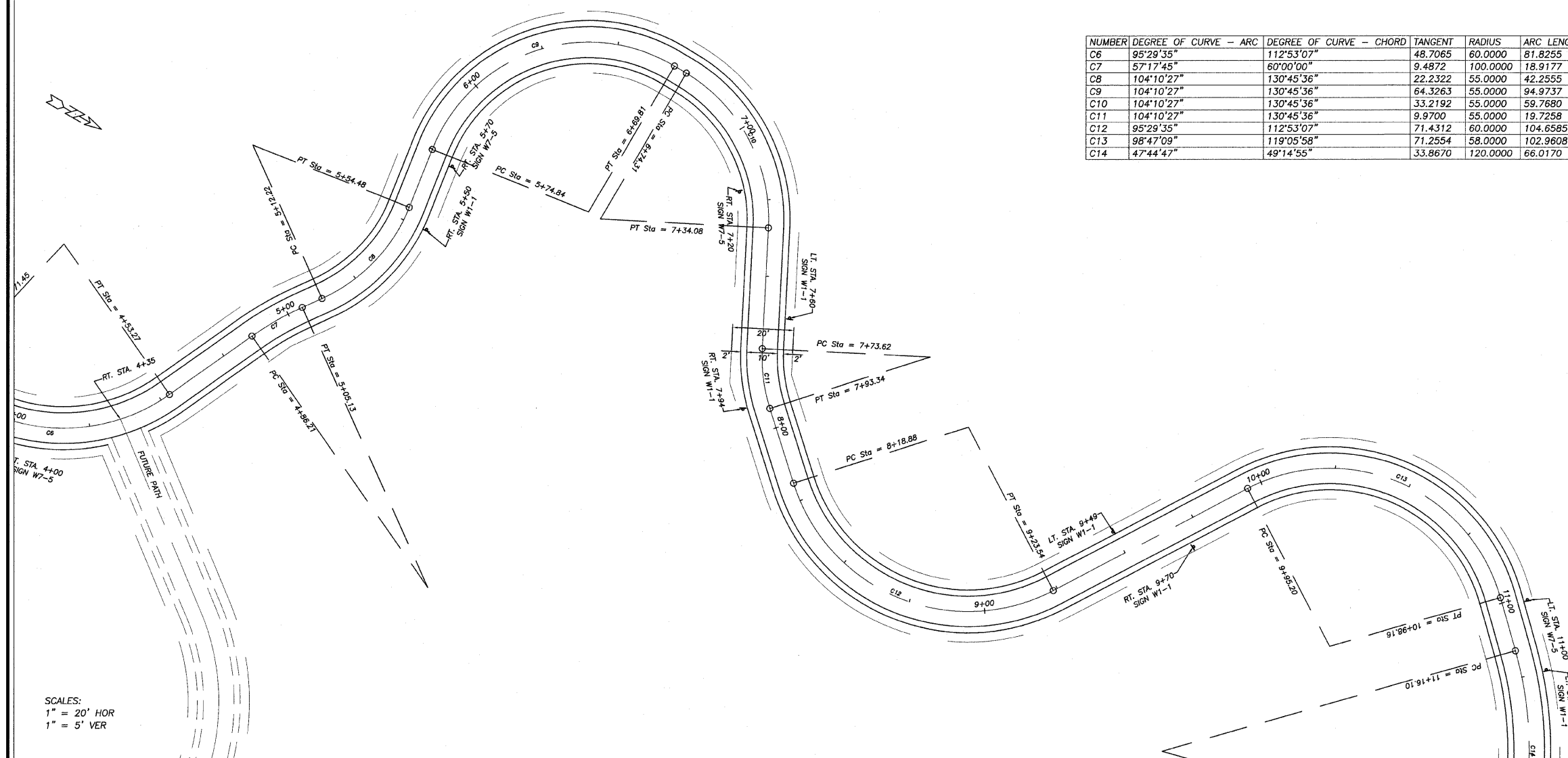
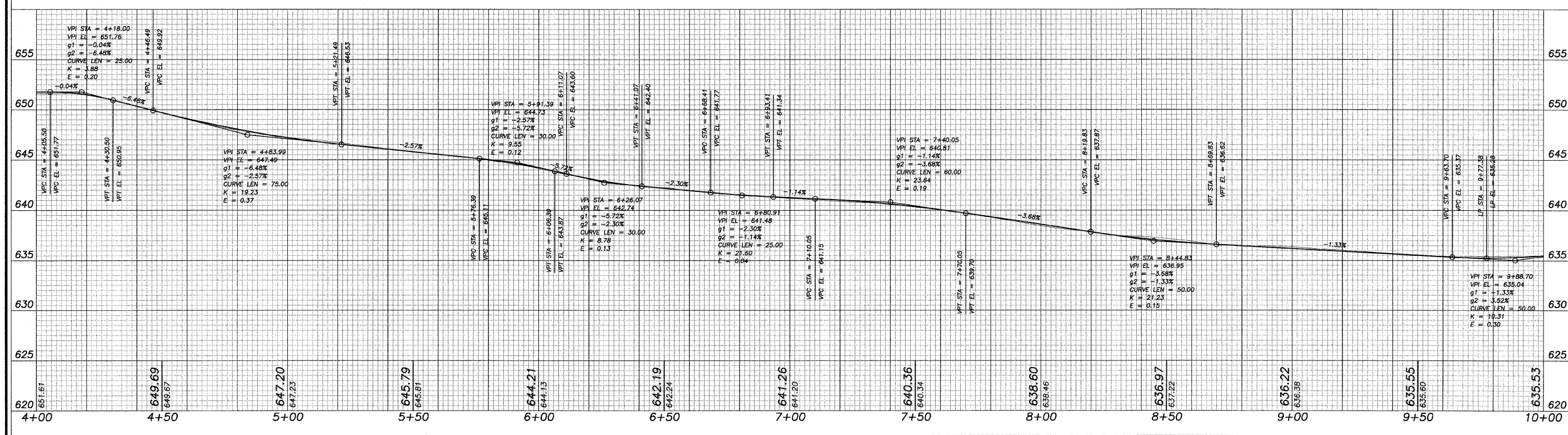


NUMBER	DEGREE OF CURVE - ARC	DEGREE OF CURVE - CHORD	TANGENT	RADIUS	ARC LENGTH	CHORD LENGTH	EXTERNAL	MID ORDINATE
C6	95°29'35"	112°53'07"	48.7065	60.0000	81.8255	75.6304	17.2808	13.4166
C7	57°17'45"	60°00'00"	9.4872	100.0000	18.9177	18.8895	0.4490	0.4470
C8	104°10'27"	130°45'36"	22.2322	55.0000	42.2555	41.2239	4.3234	4.0084
C9	104°10'27"	130°45'36"	64.3263	55.0000	94.9737	83.6060	29.6337	19.2577
C10	104°10'27"	130°45'36"	33.2192	55.0000	59.7680	56.8702	9.2535	7.9209
C11	104°10'27"	130°45'36"	9.9700	55.0000	19.7258	19.6202	0.8963	0.8820
C12	95°29'35"	112°53'07"	71.4312	60.0000	104.6585	91.8860	33.2867	21.4093
C13	98°47'09"	119°05'58"	71.2554	58.0000	102.9608	89.9643	33.8767	21.3857
C14	47°44'47"	49°14'55"	33.8670	120.0000	66.0170	65.1876	4.6875	4.5113



SCALES:
1" = 20' HOR
1" = 5' VER



REVISIONS

REVISION	DATE	BY	CHK
	20	CCT	08

DESIGNED BY: DAB
DRAWN BY: BBS
CHECKED BY: [blank]
SURVEYED BY: [blank]
PROJECT NO: [blank]

wendler
GROUND-BREAKING SOLUTIONS
engineers - surveyors - scientists
www.wendlergs.com ph: 815.288.2281
Illinois Professional Design Firm No. 184-000848

PAVING PLANS
OF
SHARED MULTI-USE PATH
FOR
STERLING PARK DISTRICT

SHEET TITLE
PLAN & PROFILE

JOB NUMBER
204005

DATE
06/10/2008

SHEET NO.
4 of 15