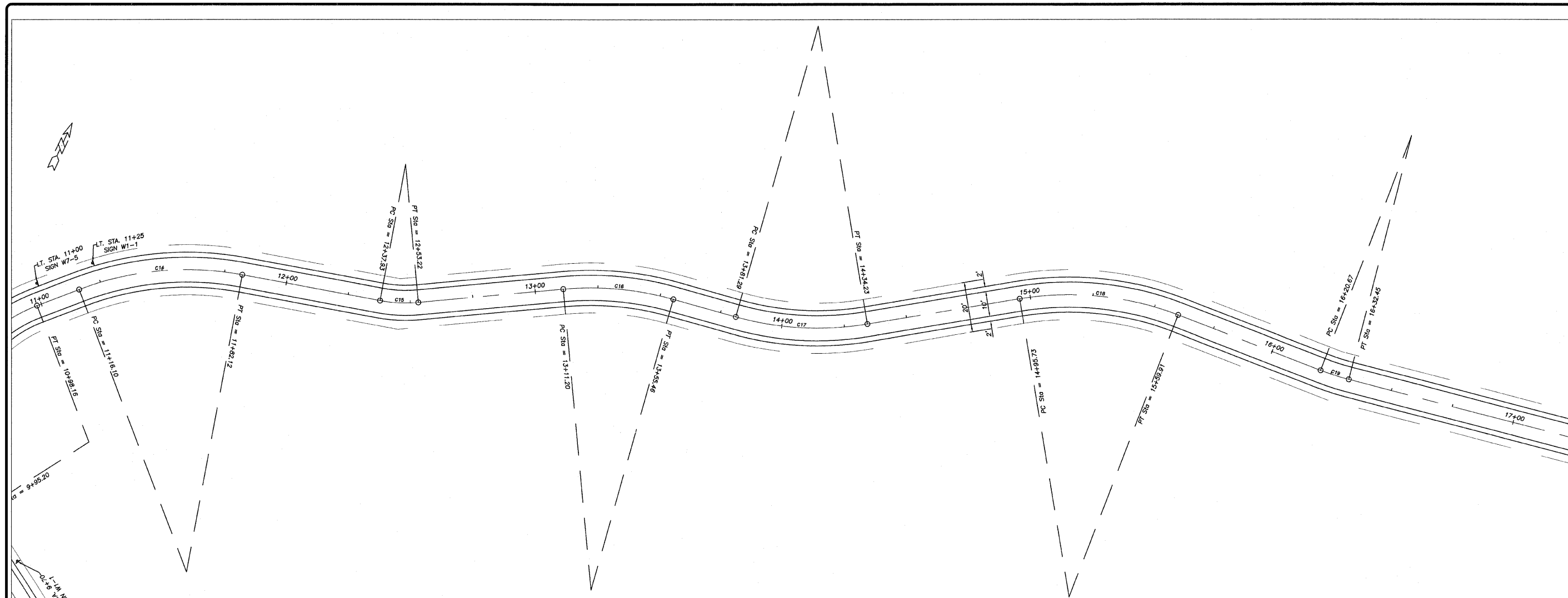


REVISION	DATE	BY
	20 OCT 08	

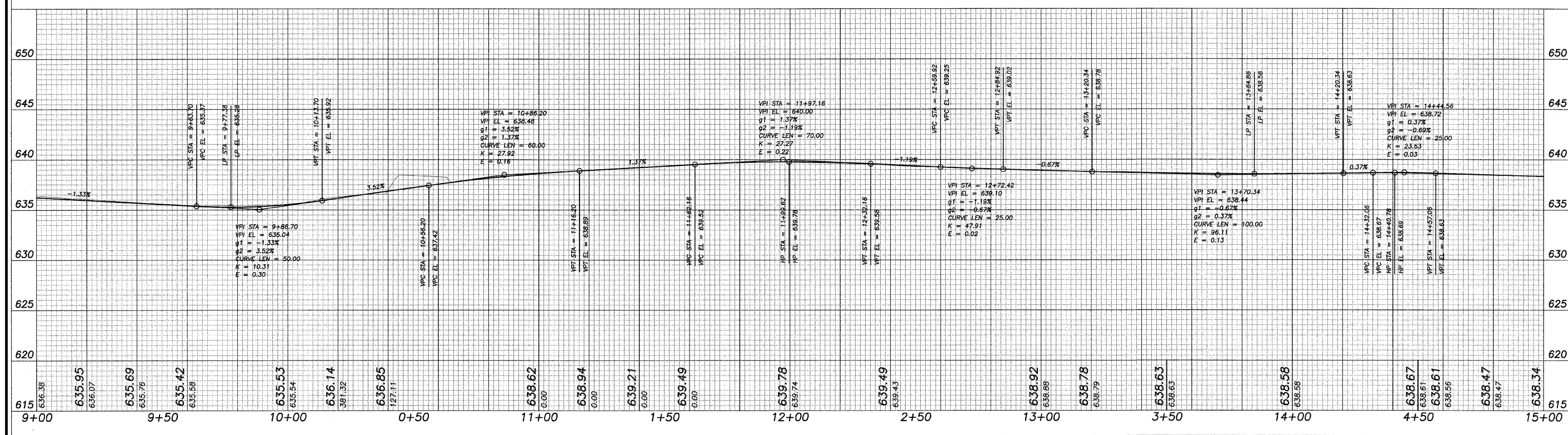
DESIGNED BY: DAB	DRAWN BY: BDS	CHECKED BY: BDS	DATE: 20 OCT 08
SURVEYED BY: BDS		PROJECT NO: 204005	

**wendler**  
 GROUND-BREAKING SOLUTIONS  
 engineers - surveyors - scientists  
 www.wendlergs.com ph: 815.288.2261  
 Illinois Professional Design Firm No. 184-000848



SCALES:  
 1" = 20' HOR  
 1" = 5' VER

NUMBER	DEGREE OF CURVE - ARC	DEGREE OF CURVE - CHORD	TANGENT	RADIUS	ARC LENGTH	CHORD LENGTH	EXTERNAL	MID ORDINATE
C14	47°44'47"	49°14'55"	33.8670	120.0000	66.0170	65.1876	4.6875	4.5113
C15	104°10'27"	130°45'36"	7.6964	55.0000	15.2935	15.2443	0.5359	0.5307
C16	47°44'47"	49°14'55"	22.3826	120.0000	44.2565	44.0062	2.0696	2.0345
C17	47°44'47"	49°14'55"	26.9046	120.0000	52.9338	52.5056	2.9791	2.9069
C18	47°44'47"	49°14'55"	32.8812	120.0000	64.1869	63.4245	4.4234	4.2661
C19	57°17'45"	60°00'00"	5.9002	100.0000	11.7868	11.7800	0.1739	0.1736



PAVING PLANS  
 OF  
 SHARED MULTI-USE PATH  
 FOR  
 STERLING PARK DISTRICT

SHEET TITLE  
**PLAN & PROFILE**

JOB NUMBER  
 204005

DATE  
 06/10/2008

SHEET NO.  
**5 of 15**