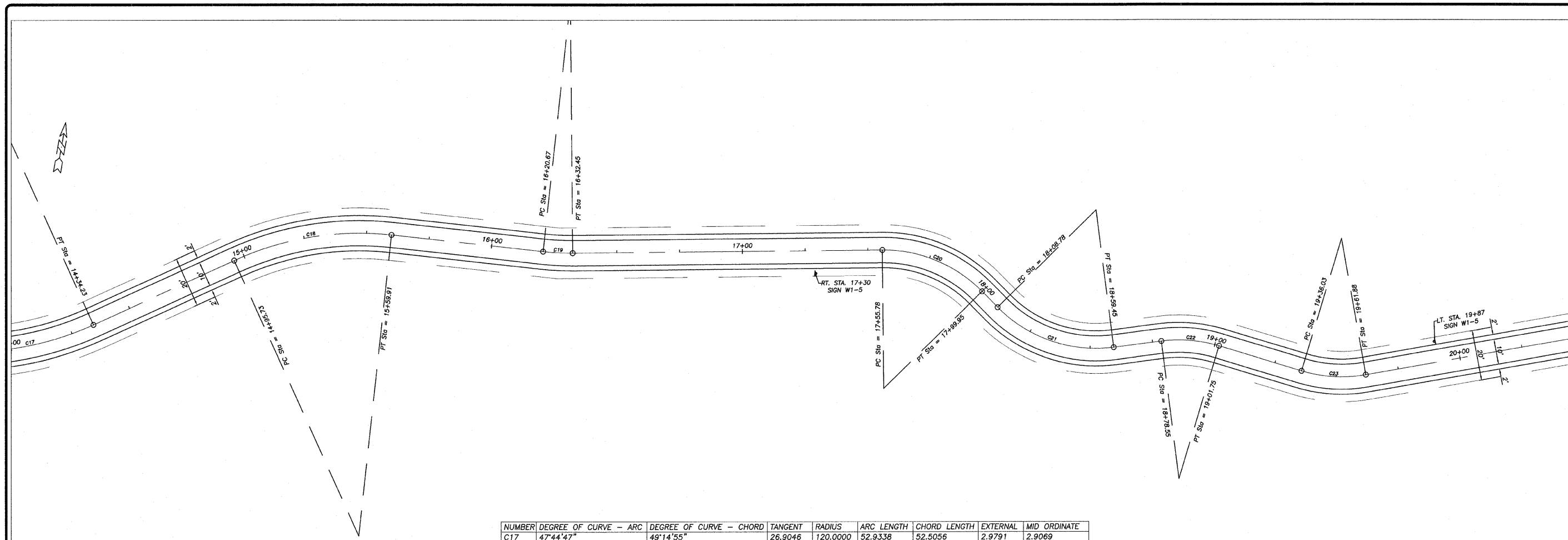


REVISION	DATE
	20 OCT 08

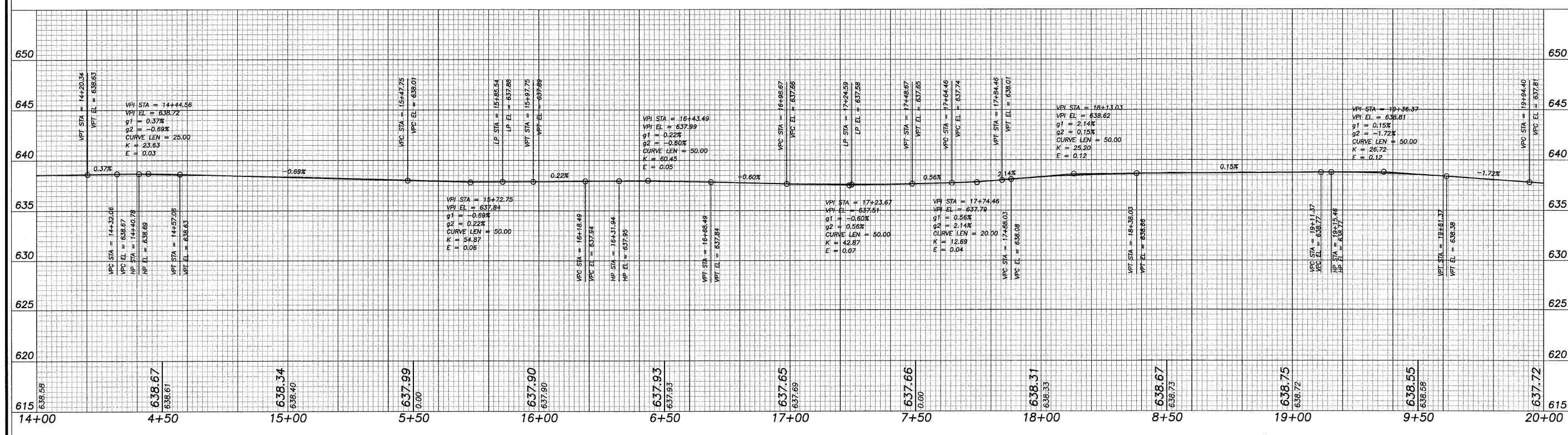
DESIGNED BY: DAB	DRAWN BY: BDS	CHECKED BY: BDS	DATE: 20 OCT 08
------------------	---------------	-----------------	-----------------

wendler
 GROUND-BREAKING SOLUTIONS
 engineers - surveyors - scientists
 www.wendlergs.com ph: 815.286.2261
 Illinois Professional Design Firm No. 184-000848



NUMBER	DEGREE OF CURVE - ARC	DEGREE OF CURVE - CHORD	TANGENT	RADIUS	ARC LENGTH	CHORD LENGTH	EXTERNAL	MID ORDINATE
C17	47°44'47"	49°14'55"	26.9046	120.0000	52.9338	52.5056	2.9791	2.9069
C18	47°44'47"	49°14'55"	32.8812	120.0000	64.1869	63.4245	4.4234	4.2661
C19	57°17'45"	60°00'00"	5.9002	100.0000	11.7868	11.7800	0.1739	0.1736
C20	104°10'27"	130°45'36"	23.3530	55.0000	44.1684	42.9911	4.7525	4.3745
C21	104°10'27"	130°45'36"	27.2899	55.0000	50.6645	48.8921	6.3982	5.7314
C22	104°10'27"	130°45'36"	11.7756	55.0000	23.2009	23.0292	1.2465	1.2188
C23	104°10'27"	130°45'36"	13.1706	55.0000	25.8543	25.6169	1.5550	1.5122

SCALES:
 1" = 20' HOR
 1" = 5' VER



PAVING PLANS
 OF
 SHARED MULTI-USE PATH
 FOR
 STERLING PARK DISTRICT

SHEET TITLE
PLAN & PROFILE

JOB NUMBER
 204005

DATE
 06/10/2008

SHEET NO.
6 of 15