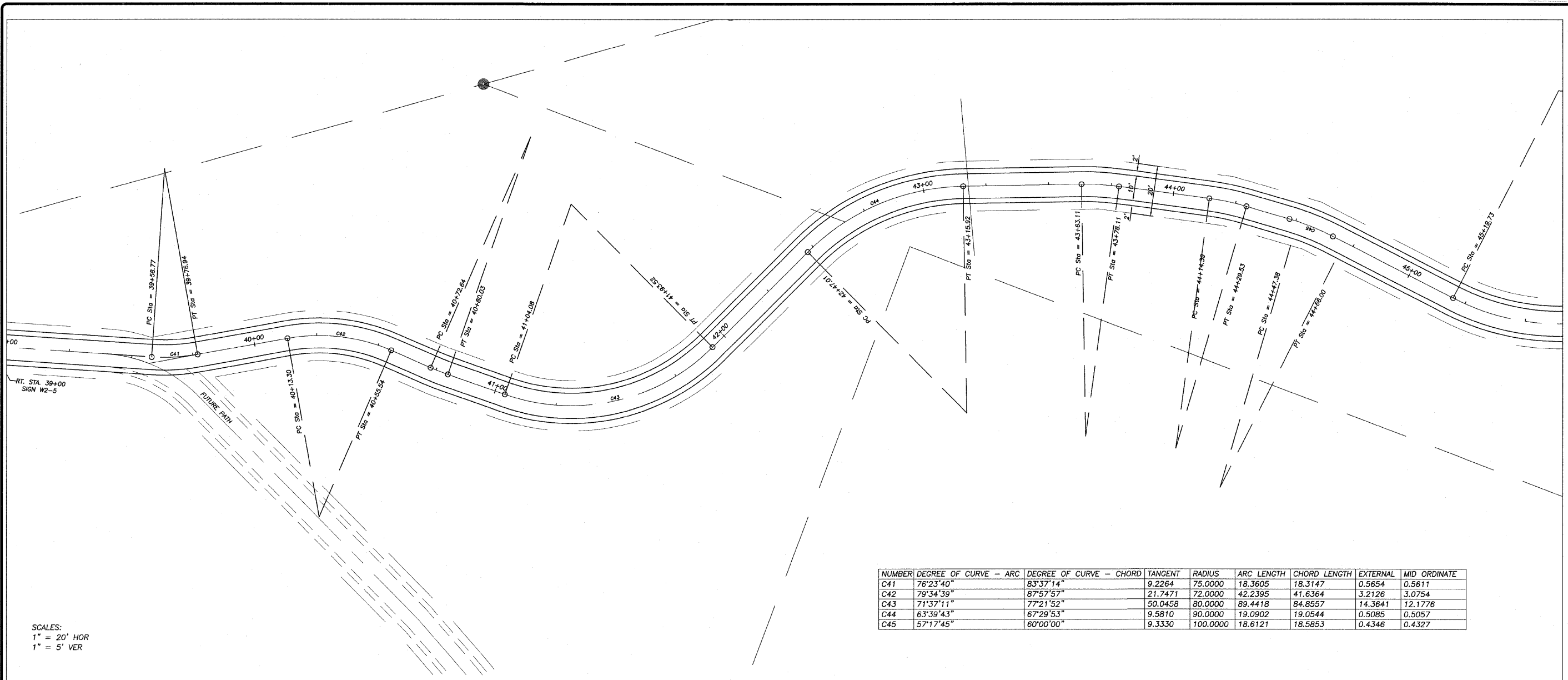


REVISION	DATE
	20 OCT 08

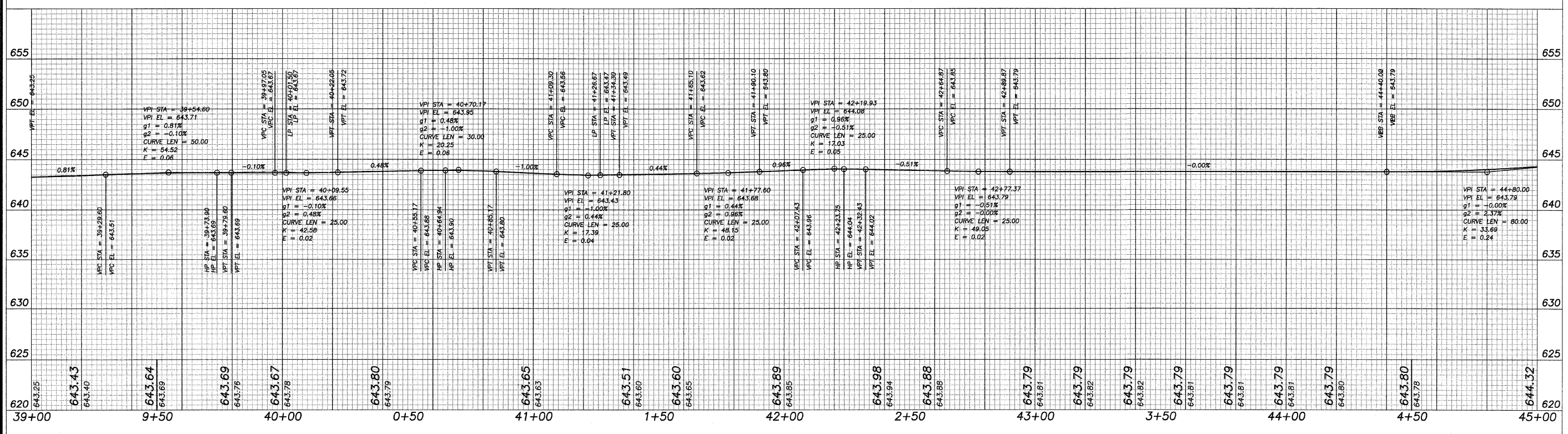
DESIGNED BY:	DAB
DRAWN BY:	BDS
DRAWING NAME:	
SURVEYED BY:	
BOOK NO.:	

**wendler**  
 GROUND-BREAKING SOLUTIONS  
 engineers - surveyors - scientists  
 www.wendlergs.com    ph: 815.288.2281  
 Illinois Professional Design Firm No. 184-000848



NUMBER	DEGREE OF CURVE - ARC	DEGREE OF CURVE - CHORD	TANGENT	RADIUS	ARC LENGTH	CHORD LENGTH	EXTERNAL	MID ORDINATE
C41	76°23'40"	83°37'14"	9.2264	75.0000	18.3605	18.3147	0.5654	0.5611
C42	79°34'39"	87°57'57"	21.7471	72.0000	42.2395	41.6364	3.2126	3.0754
C43	71°37'11"	77°21'52"	50.0458	80.0000	89.4418	84.8557	14.3641	12.1776
C44	63°39'43"	67°29'53"	9.5810	90.0000	19.0902	19.0544	0.5085	0.5057
C45	57°17'45"	60°00'00"	9.3330	100.0000	18.6121	18.5853	0.4346	0.4327

SCALES:  
 1" = 20' HOR  
 1" = 5' VER



PAVING PLANS  
 OF  
 SHARED MULTI-USE PATH  
 FOR  
 STERLING PARK DISTRICT

SHEET TITLE  
**PLAN & PROFILE**

JOB NUMBER  
 204005

DATE  
 06/10/2008

SHEET NO.  
**11 of 15**