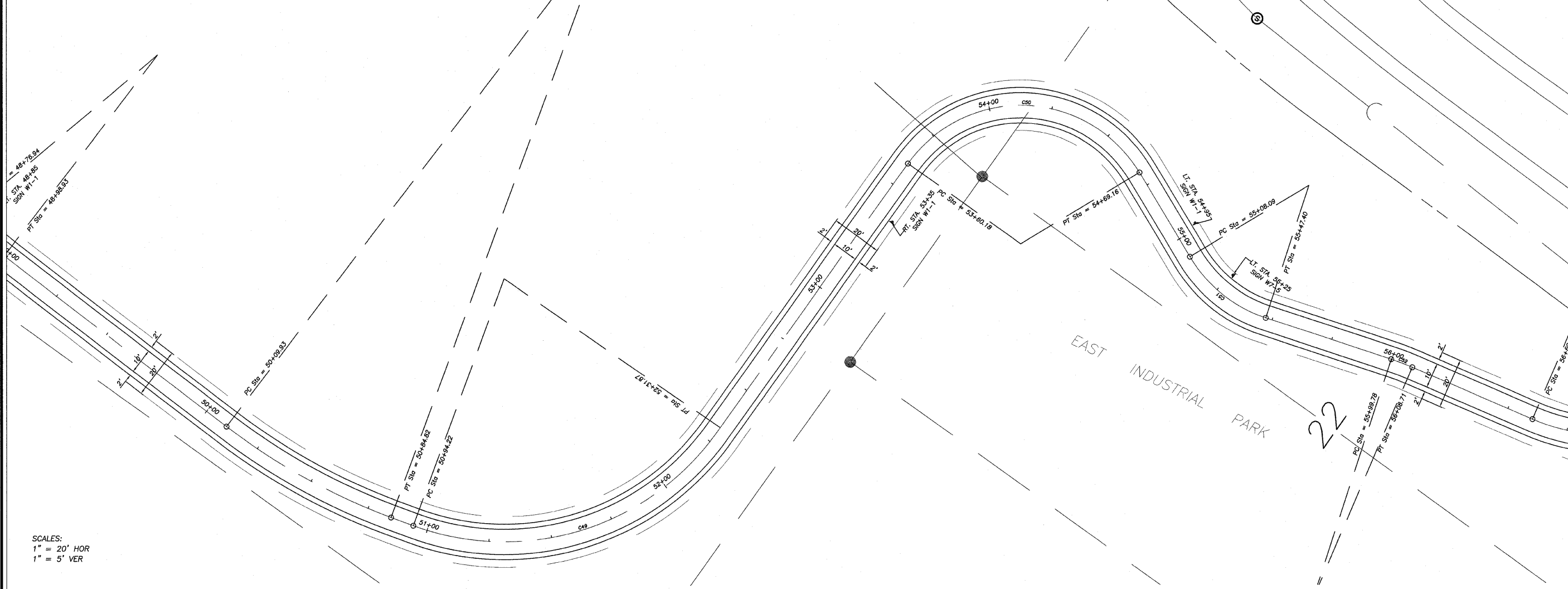
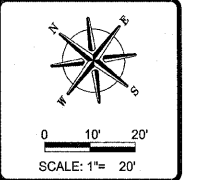
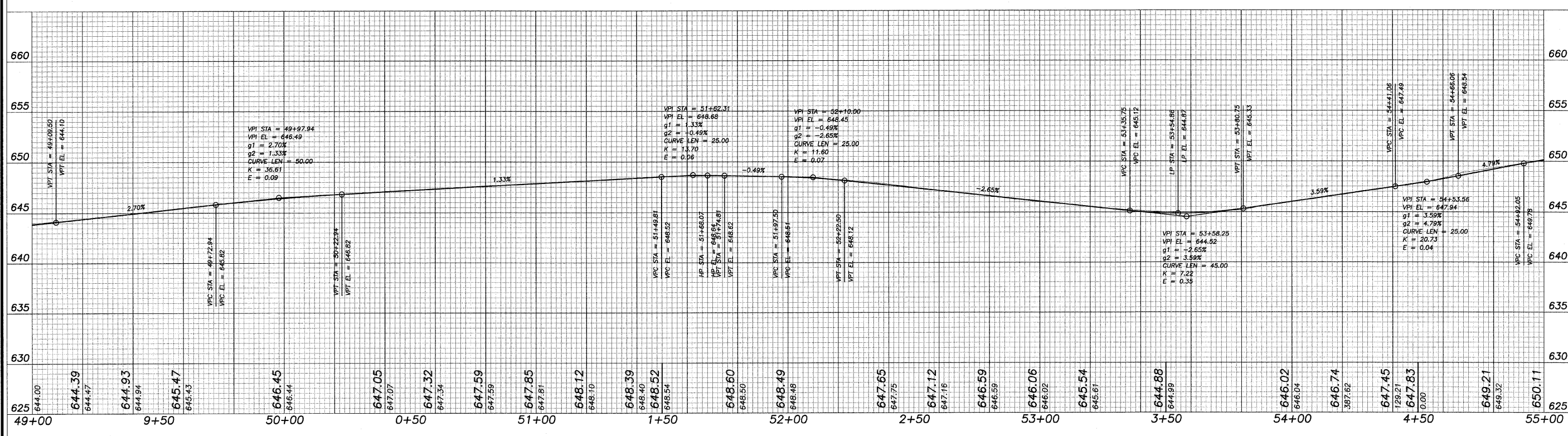


NUMBER	DEGREE OF CURVE - ARC	DEGREE OF CURVE - CHORD	TANGENT	RADIUS	ARC LENGTH	CHORD LENGTH	EXTERNAL	MID ORDINATE
C48	57°17'45"	60°00'00"	11.0396	100.0000	21.9901	21.9458	0.6075	0.6038
C49	55°05'32"	57°28'17"	81.0134	104.0000	137.6521	127.8220	27.8301	21.9550
C50	104°10'27"	130°45'36"	83.9274	55.0000	108.9753	92.0042	45.3435	24.8535
C51	104°10'27"	130°45'36"	20.5355	55.0000	39.3078	38.4766	3.7087	3.4744
C52	57°17'45"	60°00'00"	4.4703	100.0000	8.9346	8.9316	0.0999	0.0998
C53	76°23'40"	83°37'14"	24.6941	75.0000	47.7113	46.9109	3.9607	3.7621



SCALES:
1" = 20' HOR
1" = 5' VER



REVISIONS	DATE	BY
	20 OCT 08	

DESIGNED BY:	DAB
DRAWN BY:	BDS
CHECKED BY:	
DATE:	

wendler
 GROUND-BREAKING SOLUTIONS
 engineers · surveyors · scientists
 www.wendlergs.com ph: 815.286.2261
 Illinois Professional Design Firm No. 194-000948

PAVING PLANS
 OF
 SHARED MULTI-USE PATH
 FOR
 STERLING PARK DISTRICT

SHEET TITLE
PLAN & PROFILE

JOB NUMBER
 204005

DATE
 06/10/2008

SHEET NO.
13 of 15