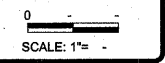


05441

STATE OF ILLINOIS  
DEPARTMENT OF TRANSPORTATION  
DIVISION OF HIGHWAYS  
PAVING PLAN FOR  
SHARED MULTI-USE PATH  
SECTION 06-P4000-00-BT  
STERLING PARK DISTRICT, STERLING, ILLINOIS  
PROJECT NO. TE-00D2 (134)      JOB NO. C-92-020-07  
2008  
ITEP # 202032  
CONTRACT NO. 85441



REVISIONS	DATE
	20 OCT 08

DESIGNED BY:	DAB
DRAWN BY:	BDS
CHECKED BY:	204005
SUBMITTED BY:	204005
BOOK NO.:	

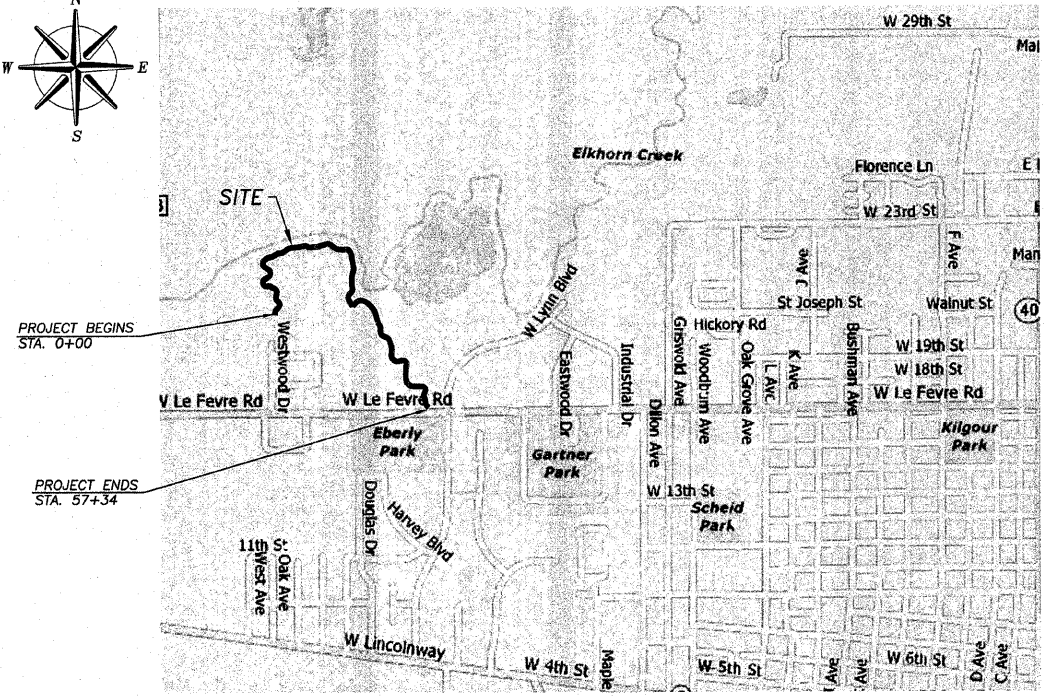
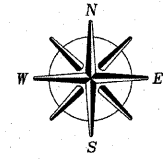
GROUND BREAKING SOLUTIONS  
engineers - surveyors - scientists  
www.wendlers.com      ph: 615.288.2261  
Illinois Professional Design Firm No. 184-000948

INDEX OF SHEETS

- COVER SHEET
- GENERAL NOTES, TYPICAL SECTION & DETAILS
- 14. PLAN AND PROFILE
- CROSS SECTION

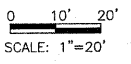
HIGHWAY STANDARDS

- 701801-04 LANE CLOSURE MULTILANE 1W & 2W CROSSWALK OR SIDEWALK CLOSURE
- 701901-01 TRAFFIC CONTROL DEVICES
- 720011-01 METAL POST FOR SIGNS MARKERS & DELINEATORS
- 728001-01 TELESCOPING STEEL SIGN SUPPORT
- 729001-01 APPLICATION OF TYPES A & B METAL POSTS (FOR SIGNS & MARKERS)



SUMMARY OF QUANTITIES  
CONSTRUCTION TYPE CODE Y047

CODE NO.	PAY ITEM	UNIT	QUANTITY
20400800	FURNISH EXCAVATION	CU.YD.	319
25000200	SEEDING CLASS 2	ACRE	1.32
35800100	PREPARATION OF BASE	SQ. YD.	6371
40600100	BITUMINOUS MATERIALS PRIME COAT	GAL.	2230
XX007775	HOT MIX ASPHALT BINDER COURSE IL. 9.5L, N30	TON	478
40603305	HOT MIX ASPHALT SURFACE COURSE MIX. C, N30	TON	573
67100100	MOBILIZATION	L.SUM	1
70101700	TRAFFIC CONTROL AND PROTECTION	L.SUM	1
72000100	SIGN PANEL - TYPE 1	SQ. FT.	70
72900100	METAL POST - TYPE A	FOOT	279



FULL SIZE PLANS HAVE BEEN PREPARED USING STANDARD ENGINEERING SCALES. REDUCED SIZED PLANS WILL NOT CONFORM TO STANDARD SCALES. IN MAKING MEASUREMENTS ON REDUCED PLANS THE ABOVE SCALE MAY BE USED.

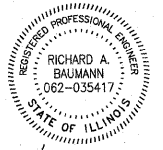
BENCHMARK INFORMATION

- B.M. #2 - "4" CUT IN S.E. TOP FLANGE BOLT OF FIRE HYDRANT @ N.E. QUAD OF FRANTZ BUILDING, ±60' WEST OF EAST DRIVE ENTRANCE & SOUTH SIDE OF W. LEFEVRE ROAD. ELEV=651.55
- B.M. #4 - SET COTTON SPINDLE IN EAST FACE OF LIGHT POLE ±25' WEST OF CONTROL PT. #68 (N.E. CORNER OF EXISTING PARKING LOT) ELEV=651.50

LOCATION MAP  
STERLING, ILLINOIS  
(NOT TO SCALE)

NET LENGTH = 5734.0' OR 1.086 MI.  
DESIGN SPEED: 15 MPH

CALL JULIE 1-800-892-0123  
WITH THE FOLLOWING:  
COUNTY - WHITESIDE  
CITY/TOWNSHIP - STERLING  
SEC. & 1/2 SEC. NO. -  
48 Hours Before You Dig  
(CLOSING SAT., SUN., & HOLIDAYS)



RICHARD A. BAUMANN  
STERLING, ILLINOIS  
ILLINOIS LICENSED PROFESSIONAL ENGINEER NO. 062-035417  
EXPIRES 11-30-2009

STERLING PARK DISTRICT  
APPROVED December 10, 2008  
*Larry Schuster*  
DIRECTOR - STERLING PARK DISTRICT

STATE OF ILLINOIS  
DEPARTMENT OF TRANSPORTATION  
PASSED Dec. 23, 2008  
*[Signature]*  
DISTRICT ENGINEER OF LOCAL ROADS & STREETS  
RELEASING FOR BID BASED ON LIMITED REVIEW  
Dec. 23, 2008  
*[Signature]*  
DEPUTY DIRECTOR OF HIGHWAYS, REGION ENGINEER

PAVING PLANS  
OF  
SHARED MULTI-USE PATH  
FOR  
STERLING PARK DISTRICT

SHEET TITLE

COVER SHEET

JOB NUMBER  
204005

DATE  
06/10/2008

SHEET NO.

1 of 15

**GENERAL NOTES**

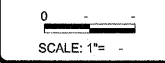
- 1.) ALL WORK SHALL BE DONE IN ACCORDANCE WITH THE STANDARD SPECIFICATIONS FOR ROAD AND BRIDGE CONSTRUCTION ADOPTED JANUARY 1, 2007 BY THE ILLINOIS DEPARTMENT OF TRANSPORTATION, AND ALL SPECIFICATIONS AND REGULATIONS THEY REFER TO.
- 2.) THE AGGREGATE BASE COURSE SHALL BE RESHAPED AND COMPACTED TO THE DIMENSIONS & GRADES AS SHOWN ON THE PLANS AS PER SECTION 301 OF THE STANDARD SPECIFICATIONS FOR ROAD AND BRIDGE CONSTRUCTION.
- 3.) BITUMINOUS MATERIALS PRIME COAT FOR THE AGGREGATE BASE SHALL BE MC-30 OR P.E.P. APPLIED AT A RATE OF 0.35 GALLONS PER SQUARE YARD. THE PRIME COAT TO BE APPLIED PRIOR TO CONSTRUCTING THE FINAL BITUMINOUS SURFACE SHALL BE SS-1 APPLIED AT A RATE OF 0.10 GALLONS PER SQUARE YARD. HOT MIX ASPHALT SHALL BE PLACED FOR THE TOTAL COMPACTED THICKNESS AS SHOWN ON THE TYPICAL SECTION, IN ACCORDANCE WITH SECTION 406 OF THE STANDARD SPECIFICATIONS.
- 4.) THE FINAL TOP FOUR INCHES OF SOIL IN ANY AREA DISTURBED BY THE CONTRACTOR MUST BE A COHESIVE SOIL CAPABLE OF SUPPORTING VEGETATION.
- 5.) THE CONTRACTOR SHALL BE RESPONSIBLE FOR PROTECTING UTILITY PROPERTY DURING CONSTRUCTION OPERATIONS AS OUTLINED IN ARTICLE 107.31 OF THE STANDARD SPECIFICATIONS. A MINIMUM OF 48 HOURS ADVANCE NOTICE IS REQUIRED FOR NON-EMERGENCY WORK. THE JULIE NUMBER IS 800-892-0123.
- 6.) SEEDING, CLASS 2 (COMPLETE) AS FOLLOWS:  
 DESCRIPTION: CLASS 2 SEEDING SHALL BE USED IN ACCORDANCE WITH THE APPLICABLE PORTIONS OF SECTION 250 OF THE STANDARD SPECIFICATIONS AND AS SPECIFIED HEREIN.  
 MATERIALS: IN ACCORDANCE WITH SECTION 250 OF THE STANDARD SPECIFICATIONS  
 EQUIPMENT: IN ACCORDANCE WITH SECTION 250 OF THE STANDARD SPECIFICATIONS  
 CONSTRUCTION REQUIREMENTS: IN ACCORDANCE WITH SECTION 250 OF THE STANDARD SPECIFICATIONS. THE FINAL TOP FOUR INCHES OF SOIL IN ALL DISTURBED AREAS WITHIN THE CONSTRUCTION LIMITS, EXCLUDING THE ROADWAY SURFACE, MUST BE A COHESIVE SOIL CAPABLE OF SUPPORTING VEGETATION.  
 INCLUDED IN THIS WORK SHALL BE THE APPLICATION OF 270 POUNDS OF FERTILIZER NUTRIENTS, PER ACRE APPLIED AT A 1:1:1 RATIO AS FOLLOWS:  

NITROGEN FERTILIZER NUTRIENTS	90 LBS/ACRE
PHOSPHOROUS FERTILIZER NUTRIENTS	90 LBS/ACRE
POTASSIUM FERTILIZER NUTRIENTS	90 LBS/ACRE

 MULCH DOES NOT NEED TO BE APPLIED.  
 METHOD OF MEASUREMENT: THE MEASURED QUANTITIES SHALL BE IN ACCORDANCE WITH ARTICLE 250.09 OF THE STANDARD SPECIFICATIONS.  
 BASIS OF PAYMENT: ALL LABOR, EQUIPMENT AND MATERIALS NECESSARY FOR COMPLETION OF THIS WORK INCLUDING FERTILIZER SHALL BE PAID FOR AT THE LUMP SUM CONTRACT UNIT PRICE FOR SEEDING, CLASS 2 COMPLETE AND SHALL INCLUDE THOSE ITEMS SPECIFIED HEREIN.
- 7) THE AREA OUTSIDE OF THE 20 FOOT EASEMENT SHALL BE PROTECTED FROM CONSTRUCTION ACTIVITIES.

**SCHEDULE OF QUANTITIES**

<u>PREPARATION OF BASE</u>		
STA. 0+00 - STA. 57+34	6371	TOTAL 6371 SQ. YD.
<u>BITUMINOUS MATERIALS (PRIME COAT)</u>		
STA. 0+00 - STA. 57+34	2230	TOTAL 2230 GAL.
<u>HOT MIX ASPHALT SURFACE COURSE, MIX. C, N30</u>		
STA. 0+00 - STA. 57+34	573	TOTAL 573 TON
<u>HOT MIX ASPHALT BINDER COURSE, IL9.5L, N30</u>		
STA. 0+00 - STA. 57+34	478	TOTAL 478 TON
<u>SEEDING, CLASS 2 COMPLETE</u>		
STA. 0+00 - STA. 57+34	1.32	TOTAL 1.32 ACRE
<u>FURNISH EXCAVATION</u>		
STA. 0+00 - STA. 57+34	319	TOTAL 319 CU. YDS.

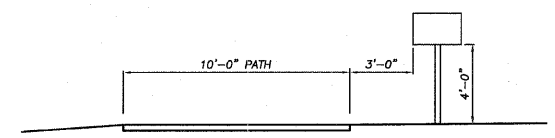


REVISION	DATE	BY

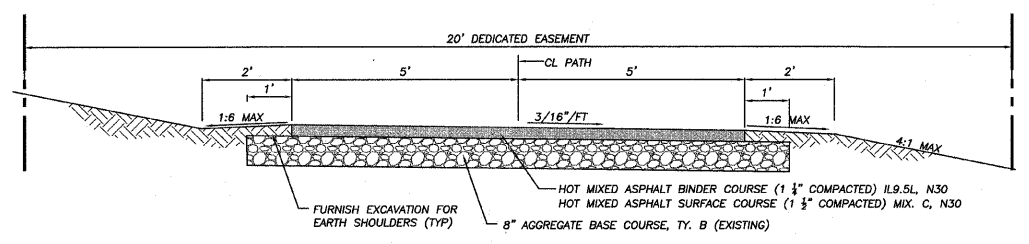
DESIGNED BY:	DAB
DRAWN BY:	BDS
PERMANENT VALUE:	204005
SUBMITTED BY:	
BOOK NO.:	

**wendler**  
 GROUNDBREAKING SOLUTIONS  
 engineers - surveyors - scientists  
 www.wendlers.com ph: 815.288.2261  
 Illinois Professional Design Firm No. 184-000848

PAVING PLANS  
 OF  
 SHARED MULTI-USE PATH  
 FOR  
 STERLING PARK DISTRICT



**TYPICAL SIGN LOCATION**



**TYPICAL PATH CROSS SECTION**

MIXTURE USE(S):	SURFACE & BINDER
PG:	PG 58-22
DESIGN AIR Voids	3.0 @ N30
MIXTURE COMPOSITION (GRADATION MIXTURE)	IL 9.5L
FRICTION AGGREGATE	C
MIX UNIT WEIGHT	112LBS/SY/IN

**SIGN LOCATION**

LOCATION	PATH SPLITS	HILL	STOP	CURVE LT.	CURVE RT.	STOP AHEAD	CURVES AHEAD
	W2-5	W7-5	R1-1	W1-1	W1-1	W3-1	W1-5
RT. STA. 1+19				1			
LT. STA. 2+55					1		
RT. STA. 4+00		1					
RT. STA. 5+50					1		
RT. STA. 5+70		1					
RT. STA. 7+20		1					
LT. STA. 7+60				1			
RT. STA. 7+94				1			
LT. STA. 9+49					1		
LT. STA. 9+70					1		
LT. STA. 11+00		1					
LT. STA. 11+25				1			
RT. STA. 17+30							1
LT. STA. 19+87							1
RT. STA. 23+92					1		
LT. STA. 25+19				1	1		
RT. STA. 30+22							1
LT. STA. 32+50							1
RT. STA. 33+00						1	
RT. STA. 33+40			1				
LT. STA. 33+64			1				
LT. STA. 33+75		1					
LT. STA. 34+04						1	
RT. STA. 39+00	1						
RT. STA. 47+20					1		
LT. STA. 48+85				1			
RT. STA. 53+25					1		
LT. STA. 54+95				1			
LT. STA. 55+25		1					
RT. STA. 57+00						1	
RT. STA. 57+35			1				
<b>TOTAL</b>	<b>1</b>	<b>6</b>	<b>3</b>	<b>7</b>	<b>7</b>	<b>3</b>	<b>4</b>

**SIGN SCHEDULE\***

SIGN	MUTCD CODE	SIZE
HILL	W7-5	18"X18"
STOP	R1-1	18"X18"
CURVE LT.	W1-1	18"X18"
CURVE RT.	W1-1	18"X18"
STOP AHEAD	W3-1	18"X18"
PATH SPLITS	W2-5	18"X18"
CURVES AHD	W1-5	18"X18"

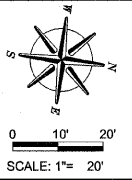
\*ALL SIGN DETAILS FOR SIZE, COLOR AND PLACEMENT SHALL BE IN ACCORDANCE WITH THE LATEST EDITION OF THE "MANUAL OF UNIFORM TRAFFIC CONTROL DEVICES" FOR STREETS AND HIGHWAYS (MUTCD).

SHEET TITLE  
**GENERAL NOTES & DETAILS**

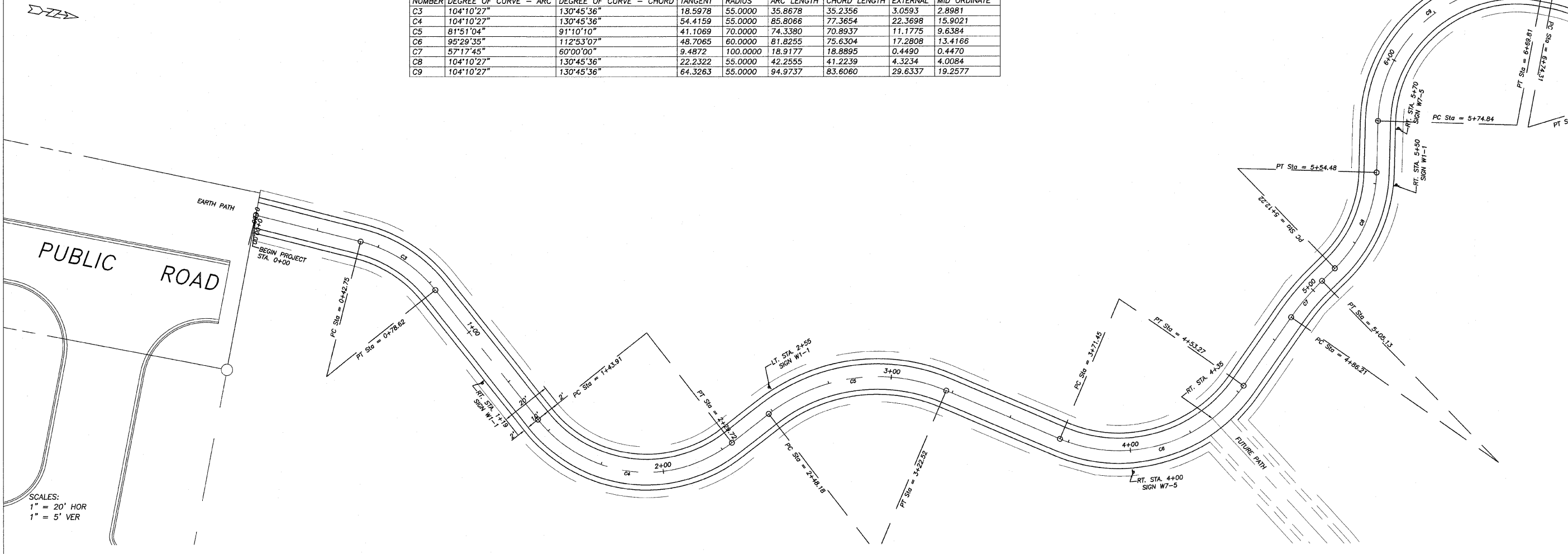
JOB NUMBER  
 204005

DATE  
 06/10/2008

SHEET NO.



NUMBER	DEGREE OF CURVE - ARC	DEGREE OF CURVE - CHORD	TANGENT	RADIUS	ARC LENGTH	CHORD LENGTH	EXTERNAL	MID ORDINATE
C3	104°10'27"	130°45'36"	18.5978	55.0000	35.8678	35.2356	3.0593	2.8981
C4	104°10'27"	130°45'36"	54.4159	55.0000	85.8066	77.3654	22.3698	15.9021
C5	81°51'04"	91°10'10"	41.1069	70.0000	74.3380	70.8937	11.1775	9.6384
C6	95°29'35"	112°53'07"	48.7065	60.0000	81.8255	75.6304	17.2808	13.4166
C7	57°17'45"	60°00'00"	9.4872	100.0000	18.9177	18.8895	0.4490	0.4470
C8	104°10'27"	130°45'36"	22.2322	55.0000	42.2555	41.2239	4.3234	4.0084
C9	104°10'27"	130°45'36"	64.3263	55.0000	94.9737	83.6060	29.6337	19.2577



SCALES:  
1" = 20' HOR  
1" = 5' VER

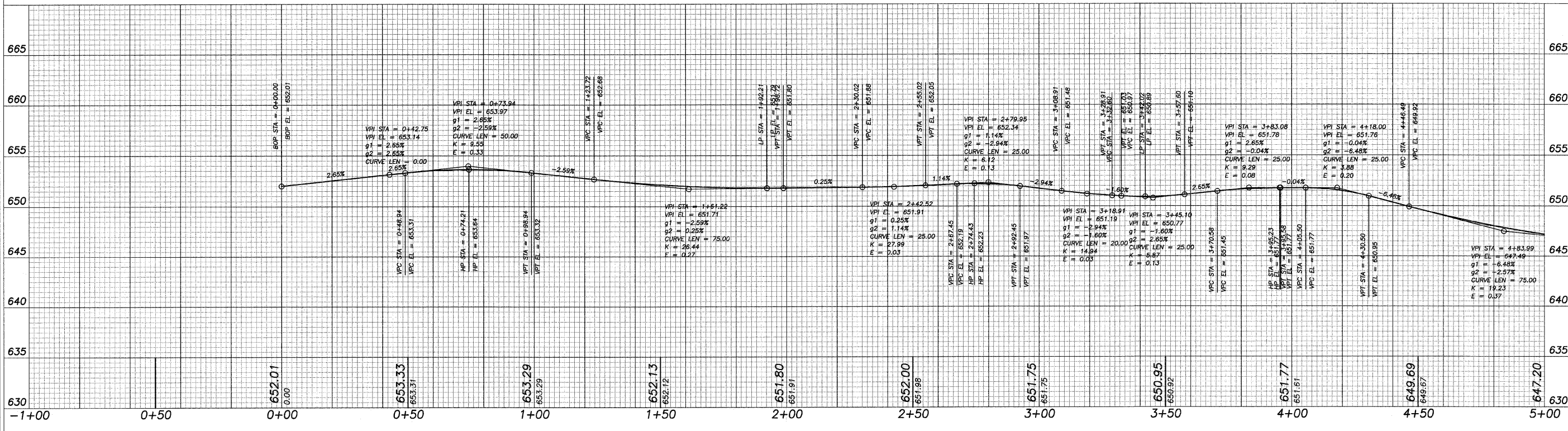
REVISIONS

REVISION	DATE	BY	CHKD
	20 OCT 08		

DESIGNED BY: DAB  
DRAWN BY: BCS  
CHECKED BY: [blank]  
SURVEYED BY: [blank]  
BOOK NO: [blank]

**wendler**  
GROUND-BREAKING SOLUTIONS  
engineers - surveyors - scientists  
www.wendlergs.com ph: 815.286.2261  
Illinois Professional Design Firm No. 184-000848

PAVING PLANS  
OF  
SHARED MULTI-USE PATH  
FOR  
STERLING PARK DISTRICT

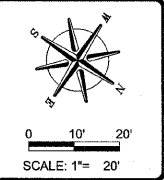


SHEET TITLE  
**PLAN & PROFILE**

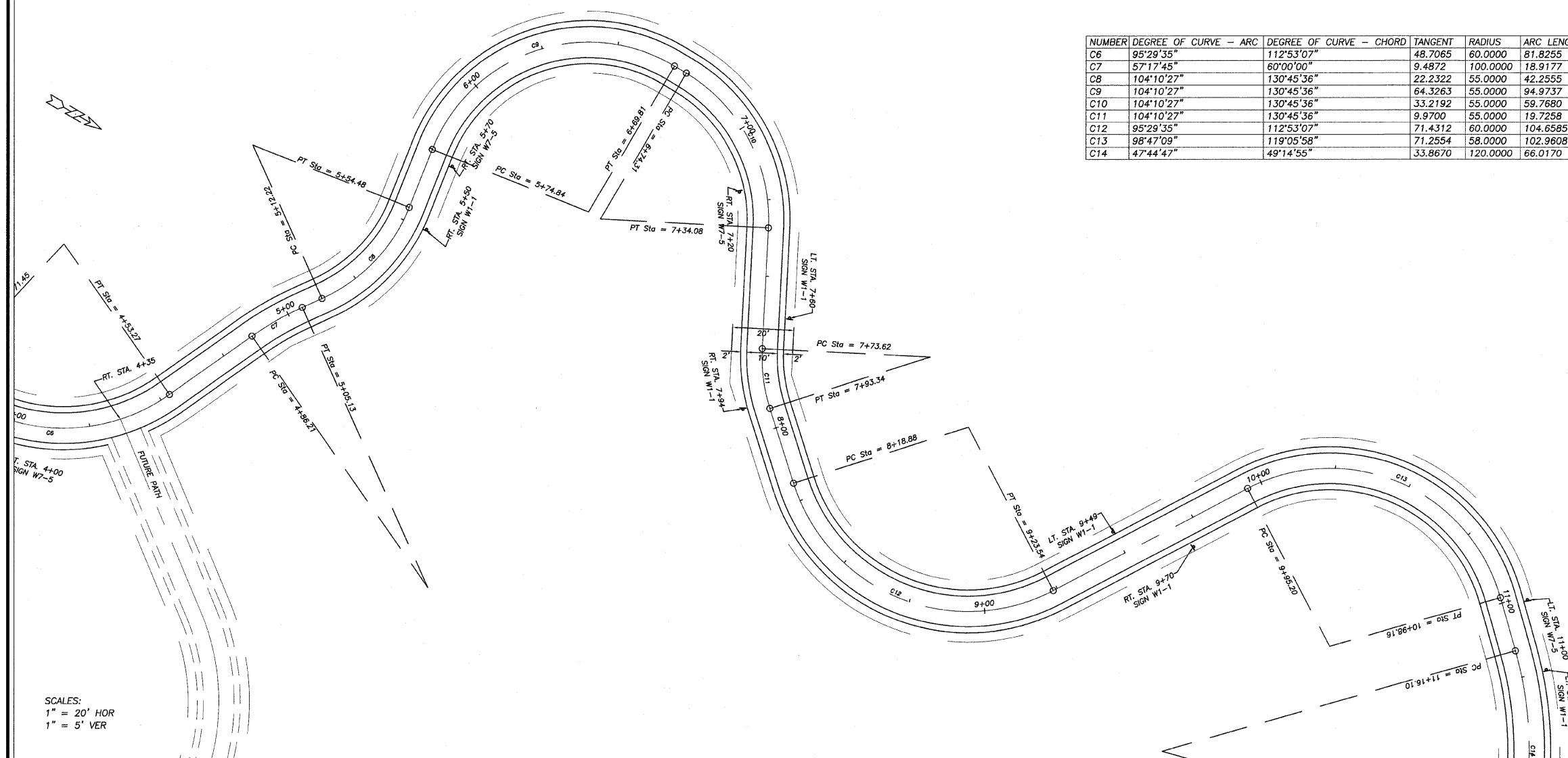
JOB NUMBER  
204005

DATE  
06/10/2008

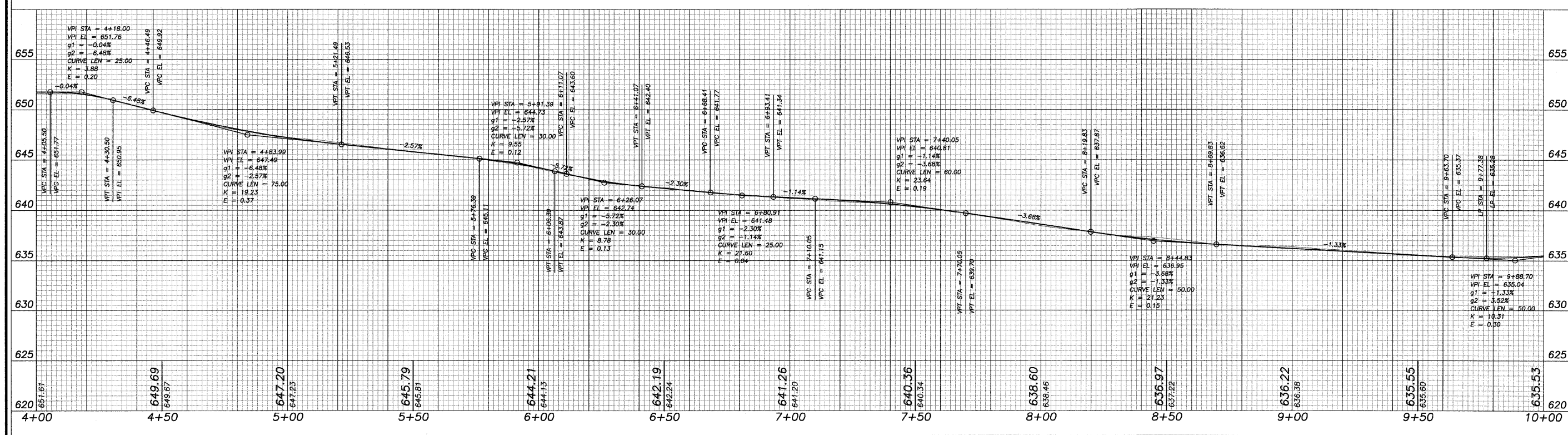
SHEET NO.  
**3 of 15**



NUMBER	DEGREE OF CURVE - ARC	DEGREE OF CURVE - CHORD	TANGENT	RADIUS	ARC LENGTH	CHORD LENGTH	EXTERNAL	MID ORDINATE
C6	95°29'35"	112°53'07"	48.7065	60.0000	81.8255	75.6304	17.2808	13.4166
C7	57°17'45"	60°00'00"	9.4872	100.0000	18.9177	18.8895	0.4490	0.4470
C8	104°10'27"	130°45'36"	22.2322	55.0000	42.2555	41.2239	4.3234	4.0084
C9	104°10'27"	130°45'36"	64.3263	55.0000	94.9737	83.6060	29.6337	19.2577
C10	104°10'27"	130°45'36"	33.2192	55.0000	59.7680	56.8702	9.2535	7.9209
C11	104°10'27"	130°45'36"	9.9700	55.0000	19.7258	19.6202	0.8963	0.8820
C12	95°29'35"	112°53'07"	71.4312	60.0000	104.6585	91.8860	33.2867	21.4093
C13	98°47'09"	119°05'58"	71.2554	58.0000	102.9608	89.9643	33.8767	21.3857
C14	47°44'47"	49°14'55"	33.8670	120.0000	66.0170	65.1876	4.6875	4.5113



SCALES:  
1" = 20' HOR  
1" = 5' VER



REVISIONS

REVISION	DATE	BY
	20 OCT 08	

DESIGNED BY: DAB  
DRAWN BY: BBS  
CHECKED BY: [blank]  
DATE: 20 OCT 08

**wendler**  
GROUND-BREAKING SOLUTIONS  
engineers - surveyors - scientists  
www.wendlergs.com  
ph: 815.288.2281  
Illinois Professional Design Firm No. 184-000848

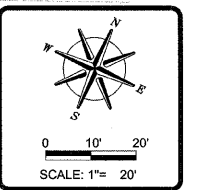
PAVING PLANS  
OF  
SHARED MULTI-USE PATH  
FOR  
STERLING PARK DISTRICT

SHEET TITLE  
**PLAN & PROFILE**

JOB NUMBER  
204005

DATE  
06/10/2008

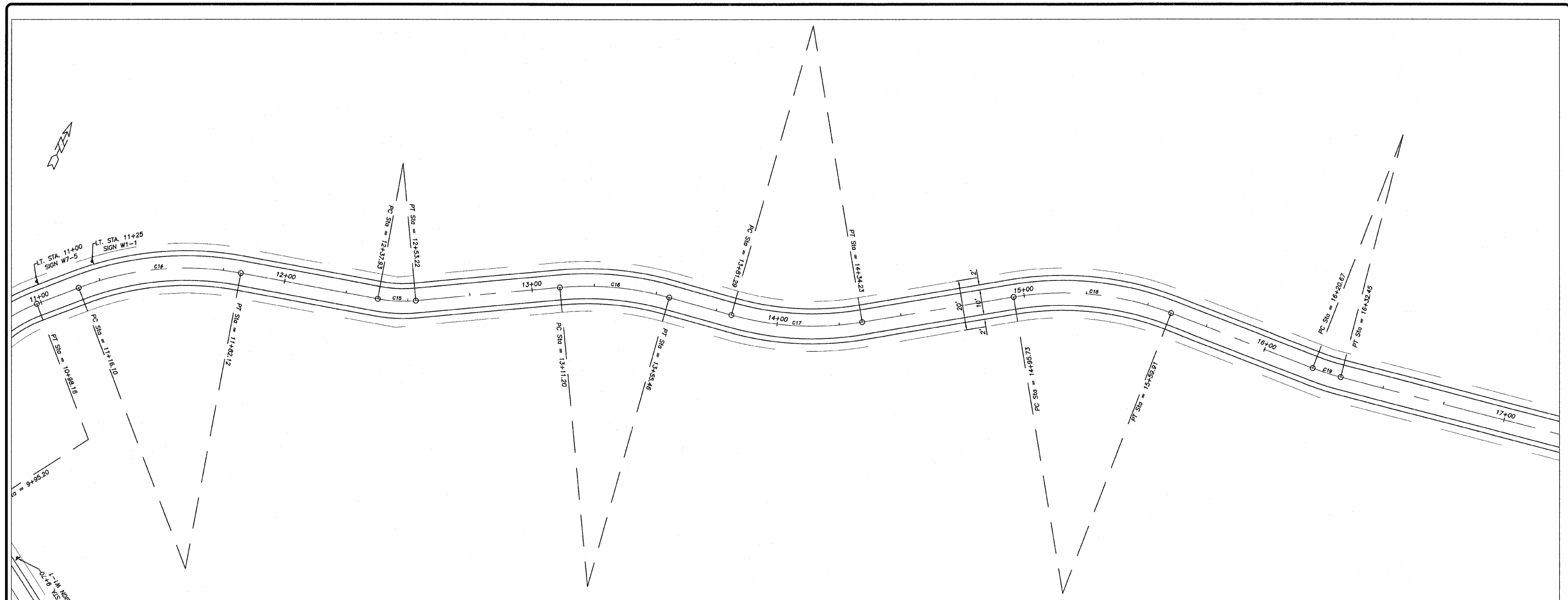
SHEET NO.  
4 of 15



REVISION	DATE	BY
	20 OCT 08	

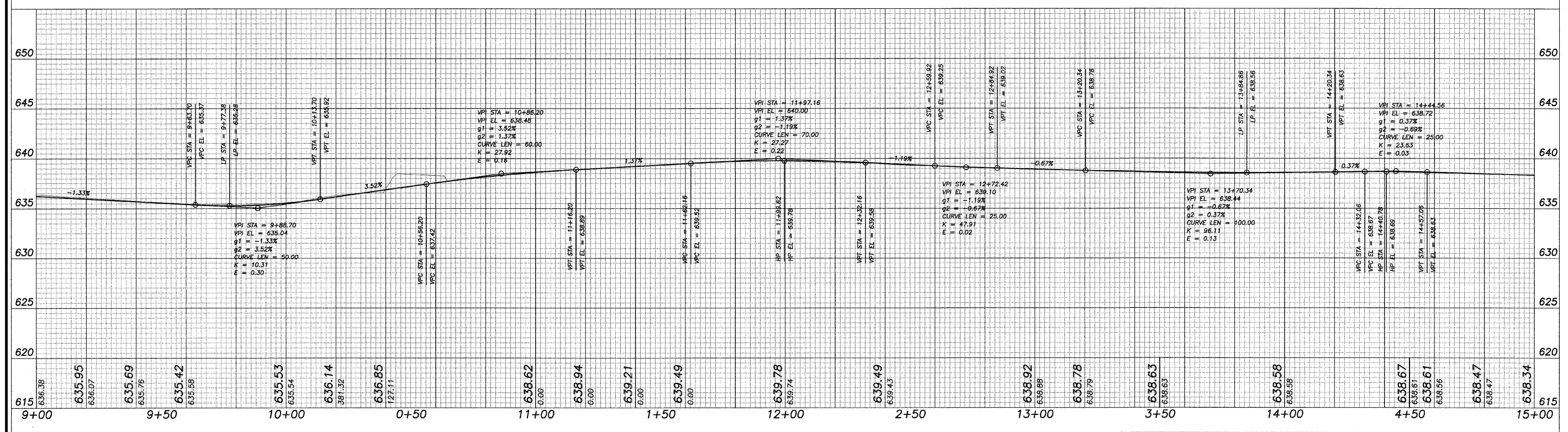
DESIGNED BY:	DAB
DRAWN BY:	BDS
CHECKED BY:	
DATE:	

**wendler**  
 GROUND-BREAKING SOLUTIONS  
 engineers - surveyors - scientists  
 www.wendlergs.com ph: 815.288.2261  
 Illinois Professional Design Firm No. 184-000848



SCALES:  
 1" = 20' HOR  
 1" = 5' VER

NUMBER	DEGREE OF CURVE - ARC	DEGREE OF CURVE - CHORD	TANGENT	RADIUS	ARC LENGTH	CHORD LENGTH	EXTERNAL	MID ORDINATE
C14	47°44'47"	49°14'55"	33.8670	120.0000	66.0170	65.1876	4.6875	4.5113
C15	104°10'27"	130°45'36"	7.6964	55.0000	15.2935	15.2443	0.5359	0.5307
C16	47°44'47"	49°14'55"	22.3826	120.0000	44.2565	44.0062	2.0696	2.0345
C17	47°44'47"	49°14'55"	26.9046	120.0000	52.9338	52.5056	2.9791	2.9069
C18	47°44'47"	49°14'55"	32.8812	120.0000	64.1869	63.4245	4.4234	4.2661
C19	57°17'45"	60°00'00"	5.9002	100.0000	11.7868	11.7800	0.1739	0.1736



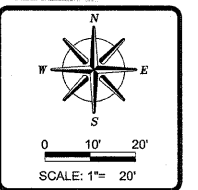
PAVING PLANS  
 OF  
 SHARED MULTI-USE PATH  
 FOR  
 STERLING PARK DISTRICT

SHEET TITLE  
**PLAN & PROFILE**

JOB NUMBER  
 204005

DATE  
 06/10/2008

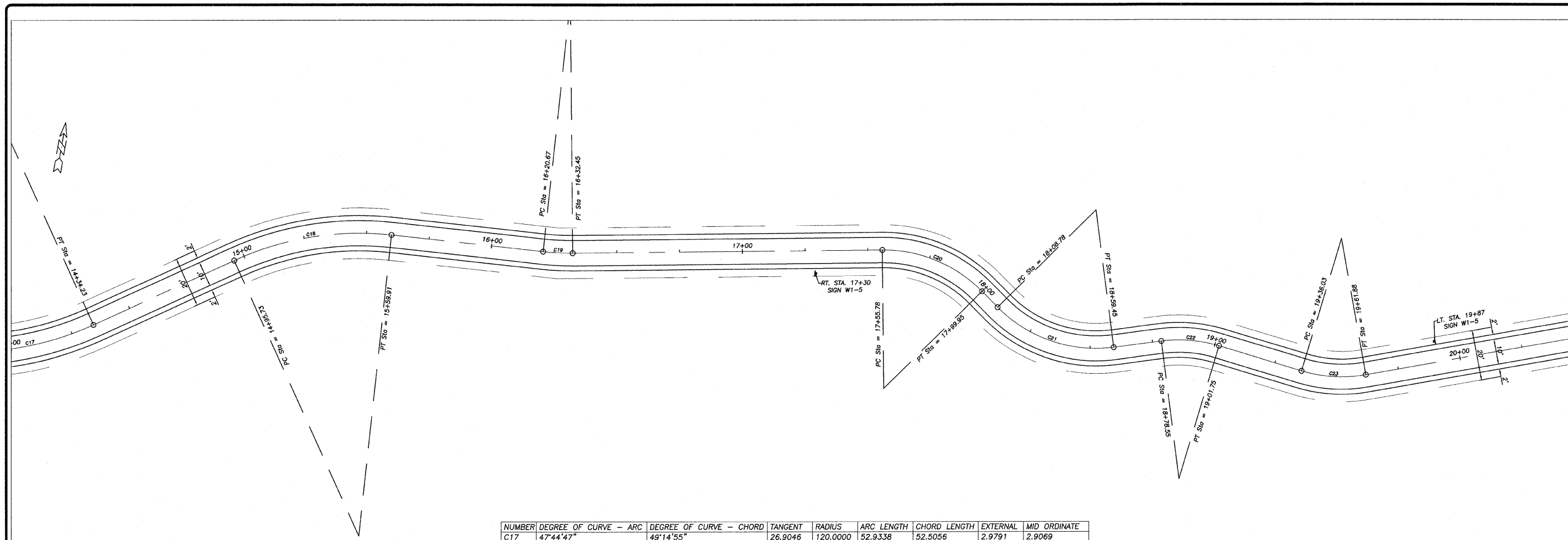
SHEET NO.  
**5 of 15**



REVISION	DATE
	20 OCT 08

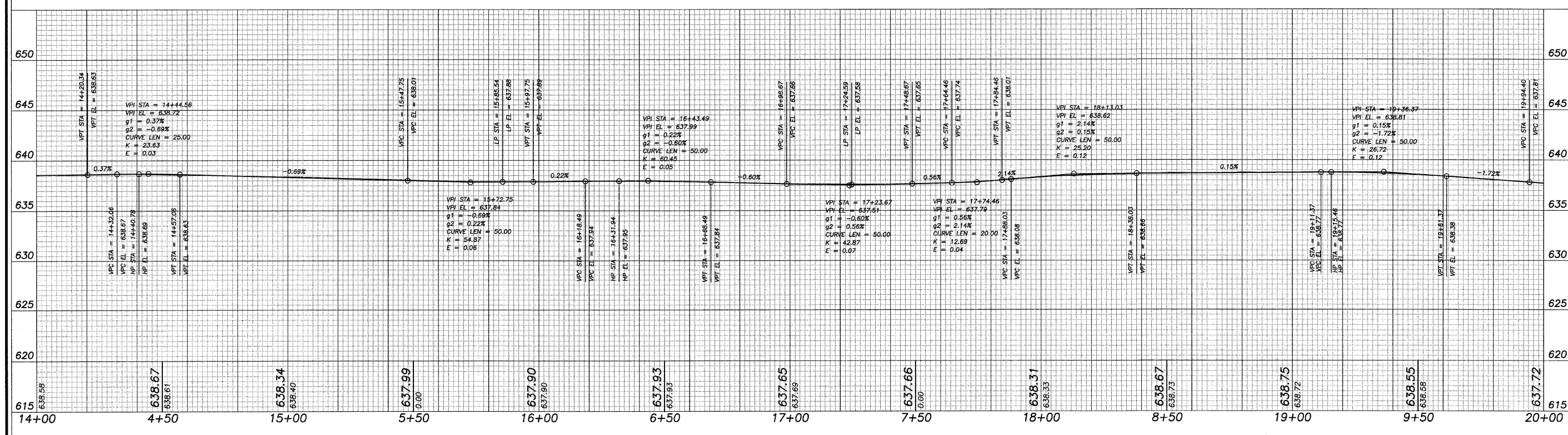
DESIGNED BY: DAB	DRAWN BY: BDS	CHECKED BY: BDS	DATE: 20 OCT 08
------------------	---------------	-----------------	-----------------

**wendler**  
 GROUND-BREAKING SOLUTIONS  
 engineers - surveyors - scientists  
 www.wendlergs.com    ph: 815.286.2261  
 Illinois Professional Design Firm No. 184-000848



NUMBER	DEGREE OF CURVE - ARC	DEGREE OF CURVE - CHORD	TANGENT	RADIUS	ARC LENGTH	CHORD LENGTH	EXTERNAL	MID ORDINATE
C17	47°44'47"	49°14'55"	26.9046	120.0000	52.9338	52.5056	2.9791	2.9069
C18	47°44'47"	49°14'55"	32.8812	120.0000	64.1869	63.4245	4.4234	4.2661
C19	57°17'45"	60°00'00"	5.9002	100.0000	11.7868	11.7800	0.1739	0.1736
C20	104°10'27"	130°45'36"	23.3530	55.0000	44.1684	42.9911	4.7525	4.3745
C21	104°10'27"	130°45'36"	27.2899	55.0000	50.6645	48.8921	6.3982	5.7314
C22	104°10'27"	130°45'36"	11.7756	55.0000	23.2009	23.0292	1.2465	1.2188
C23	104°10'27"	130°45'36"	13.1706	55.0000	25.8543	25.6169	1.5550	1.5122

SCALES:  
 1" = 20' HOR  
 1" = 5' VER



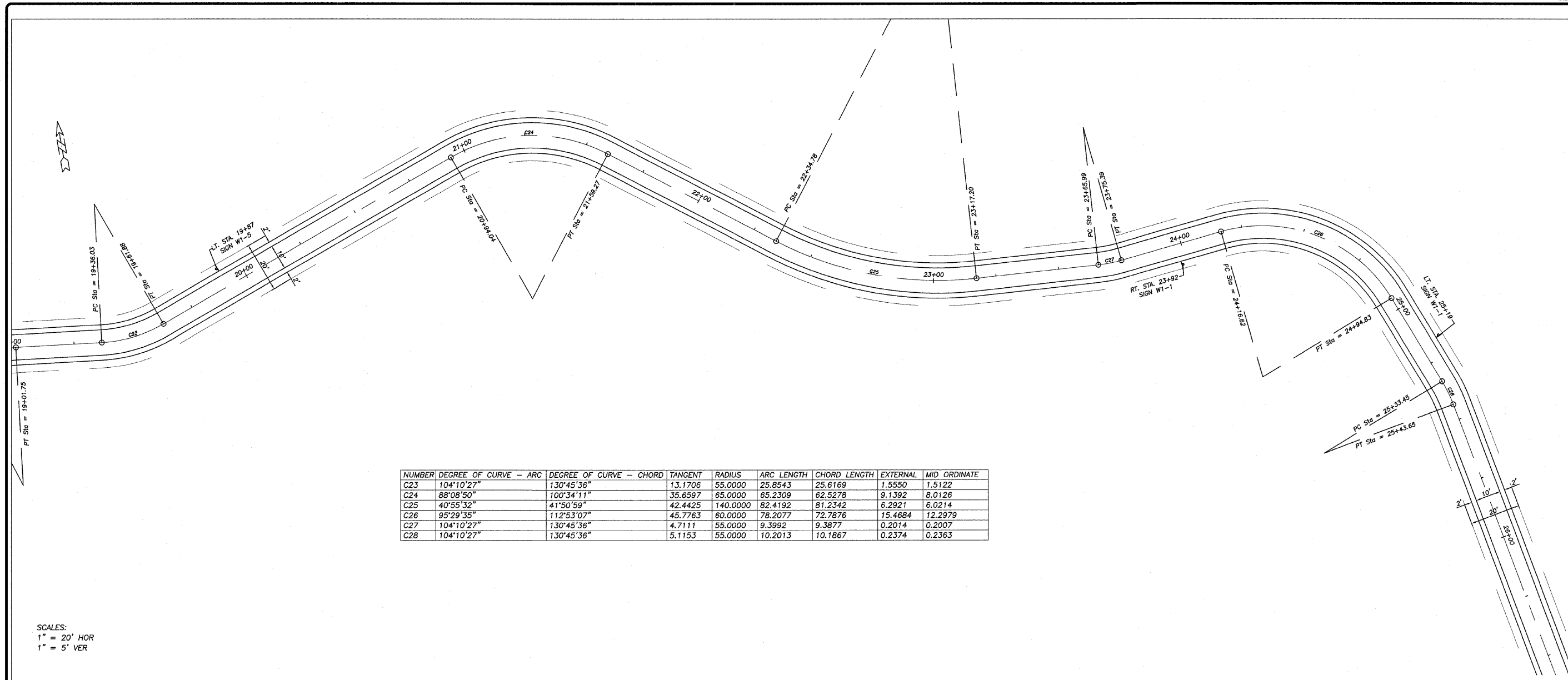
PAVING PLANS  
 OF  
 SHARED MULTI-USE PATH  
 FOR  
 STERLING PARK DISTRICT

SHEET TITLE  
**PLAN & PROFILE**

JOB NUMBER  
 204005

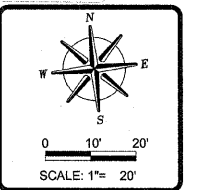
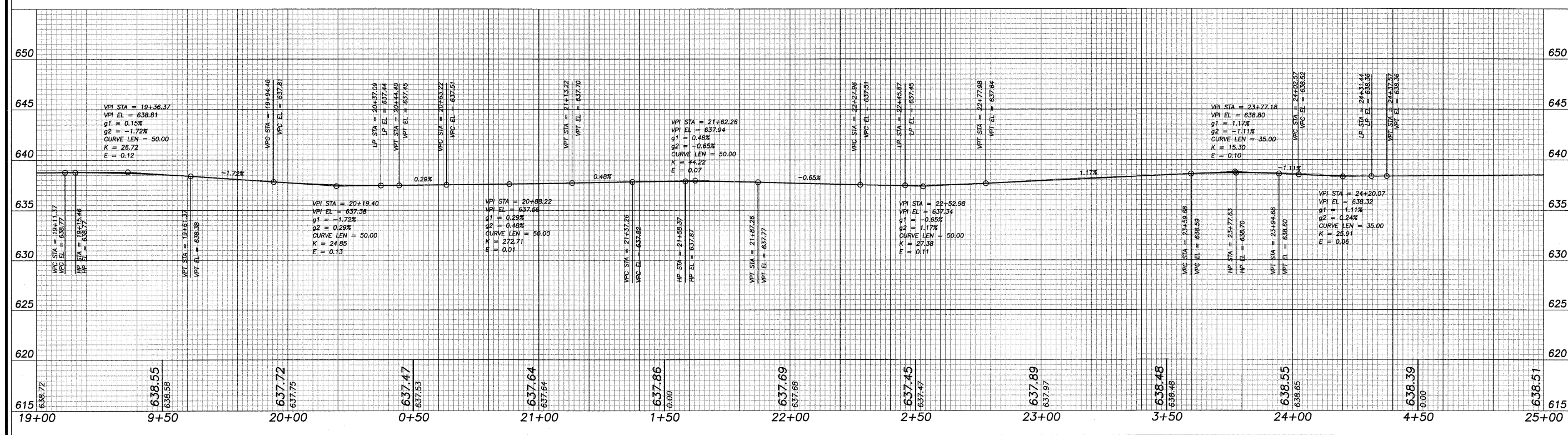
DATE  
 06/10/2008

SHEET NO.  
**6 of 15**



NUMBER	DEGREE OF CURVE - ARC	DEGREE OF CURVE - CHORD	TANGENT	RADIUS	ARC LENGTH	CHORD LENGTH	EXTERNAL	MID ORDINATE
C23	104°10'27"	130°45'36"	13.1706	55.0000	25.8543	25.6169	1.5550	1.5122
C24	88°08'50"	100°34'11"	35.6597	65.0000	65.2309	62.5278	9.1392	8.0126
C25	40°55'32"	41°50'59"	42.4425	140.0000	82.4192	81.2342	6.2921	6.0214
C26	95°29'35"	112°53'07"	45.7763	60.0000	78.2077	72.7876	15.4684	12.2979
C27	104°10'27"	130°45'36"	4.7111	55.0000	9.3992	9.3877	0.2014	0.2007
C28	104°10'27"	130°45'36"	5.1153	55.0000	10.2013	10.1867	0.2374	0.2363

SCALES:  
1" = 20' HOR  
1" = 5' VER



REVISION	DATE	BY
	20 OCT 08	

DESIGNED BY: DAB  
DRAWN BY: BOS  
CHECKED BY: [blank]  
SUBMITTED BY: [blank]  
BOOK NO: [blank]

**wendler**  
GROUND-BREAKING SOLUTIONS  
engineers - surveyors - scientists  
www.wendlergs.com ph: 815.286.2261  
Illinois Professional Design Firm No. 184-000848

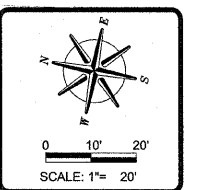
PAVING PLANS  
OF  
SHARED MULTI-USE PATH  
FOR  
STERLING PARK DISTRICT

SHEET TITLE  
**PLAN & PROFILE**

JOB NUMBER  
204005

DATE  
06/10/2008

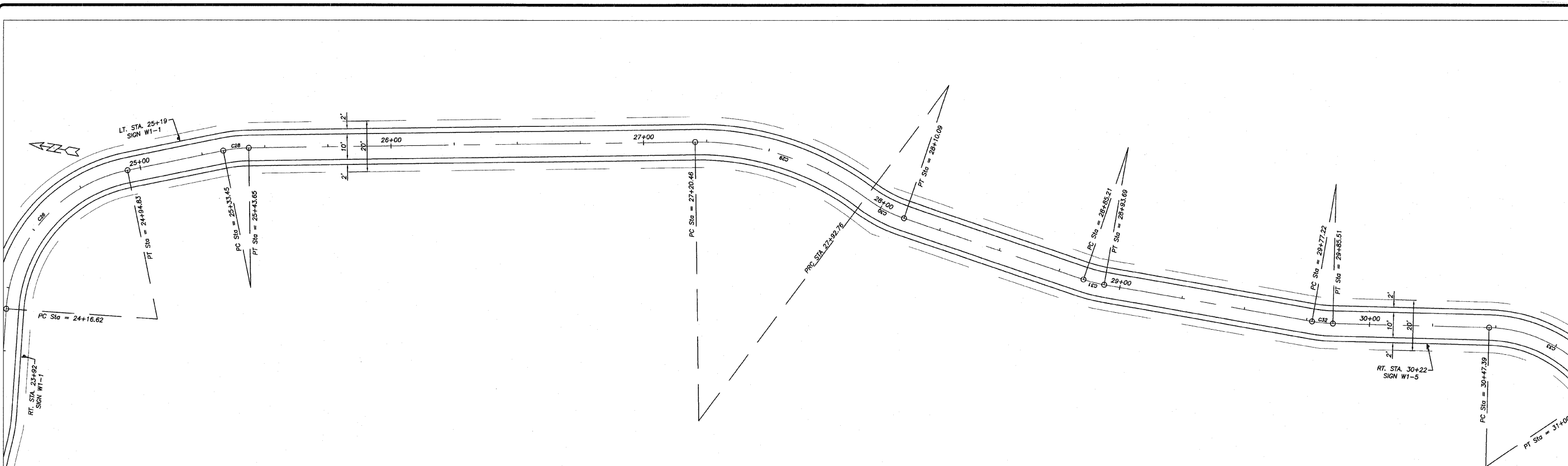
SHEET NO.  
**7 of 15**



REVISION	DATE	BY
	20 OCT 08	

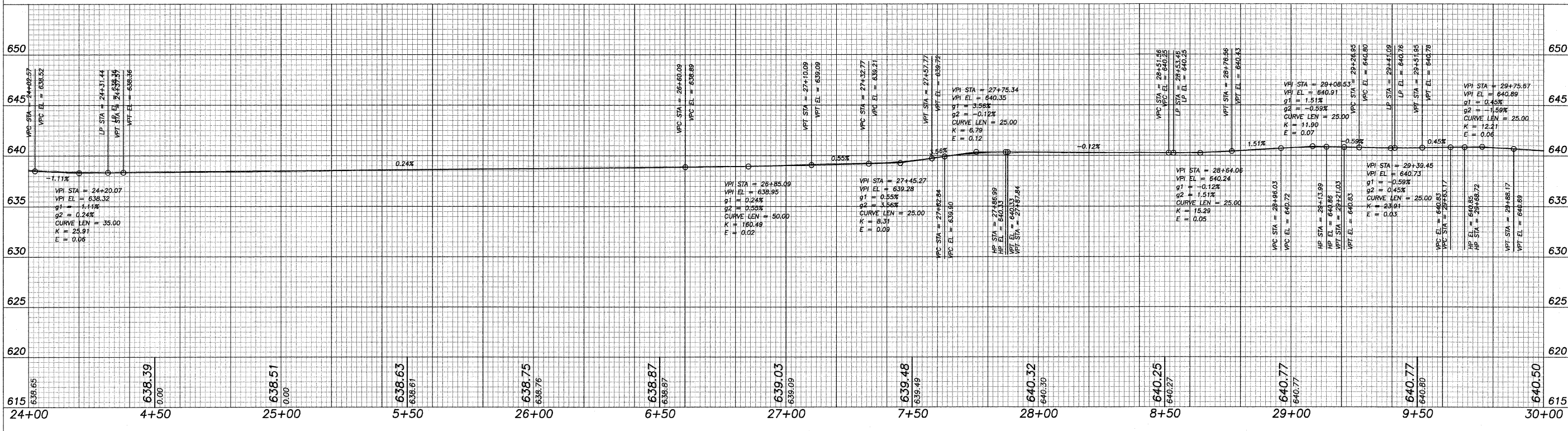
DESIGNED BY: DAB	DRAWN BY: BGS	CHECKED BY: BGS	DATE: 20 OCT 08
------------------	---------------	-----------------	-----------------

**wendler**  
 GROUND-BREAKING SOLUTIONS  
 engineers - surveyors - scientists  
 www.wendlergs.com ph: 815.286.2261  
 Illinois Professional Design Firm No. 194-000948



NUMBER	DEGREE OF CURVE -- ARC	DEGREE OF CURVE -- CHORD	TANGENT	RADIUS	ARC LENGTH	CHORD LENGTH	EXTERNAL	MID ORDINATE
C26	95°29'35"	112°53'07"	45.7763	60.0000	78.2077	72.7876	15.4684	12.2979
C27	104°10'27"	130°45'36"	4.7111	55.0000	9.3992	9.3877	0.2014	0.2007
C28	104°10'27"	130°45'36"	5.1153	55.0000	10.2013	10.1867	0.2374	0.2363
C29	52°05'13"	54°04'17"	37.5094	110.0000	72.2986	71.0042	6.2194	5.8866
C30	104°10'27"	130°45'36"	8.7383	55.0000	17.3318	17.2602	0.6898	0.6813
C31	104°10'27"	130°45'36"	4.2461	55.0000	8.4753	8.4669	0.1637	0.1632
C32	104°10'27"	130°45'36"	4.1559	55.0000	8.2961	8.2882	0.1568	0.1563
C33	104°10'27"	130°45'36"	28.5135	55.0000	52.6108	50.6278	6.9517	6.1717

SCALES:  
 1" = 20' HOR  
 1" = 5' VER



PAVING PLANS  
 OF  
 SHARED MULTI-USE PATH  
 FOR  
 STERLING PARK DISTRICT

SHEET TITLE  
**PLAN & PROFILE**

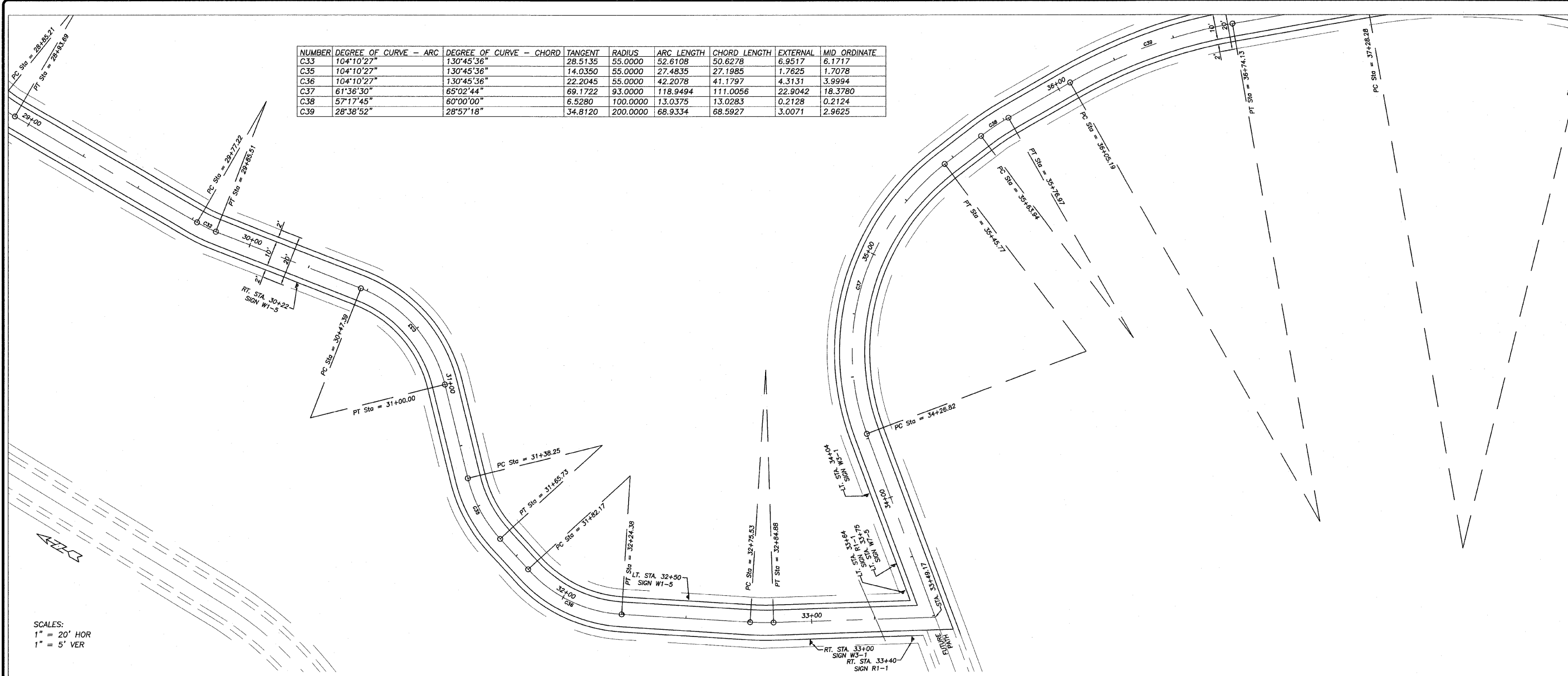
JOB NUMBER  
 204005

DATE  
 06/10/2008

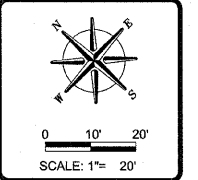
SHEET NO.  
**8 of 15**



NUMBER	DEGREE OF CURVE - ARC	DEGREE OF CURVE - CHORD	TANGENT	RADIUS	ARC LENGTH	CHORD LENGTH	EXTERNAL	MID ORDINATE
C.33	104°10'27"	130°45'36"	28.5135	55.0000	52.6108	50.6278	6.9517	8.1717
C.35	104°10'27"	130°45'36"	14.0350	55.0000	27.4835	27.1985	1.7625	1.7078
C.36	104°10'27"	130°45'36"	22.2045	55.0000	42.2078	41.1797	4.3131	3.9994
C.37	61°36'30"	65°02'44"	69.1722	93.0000	118.9494	111.0056	22.9042	18.3780
C.38	57°17'45"	60°00'00"	6.5280	100.0000	13.0375	13.0283	0.2128	0.2124
C.39	28°38'52"	28°57'18"	34.8120	200.0000	68.9334	68.5927	3.0071	2.9625



SCALES:  
 1" = 20' HOR  
 1" = 5' VER

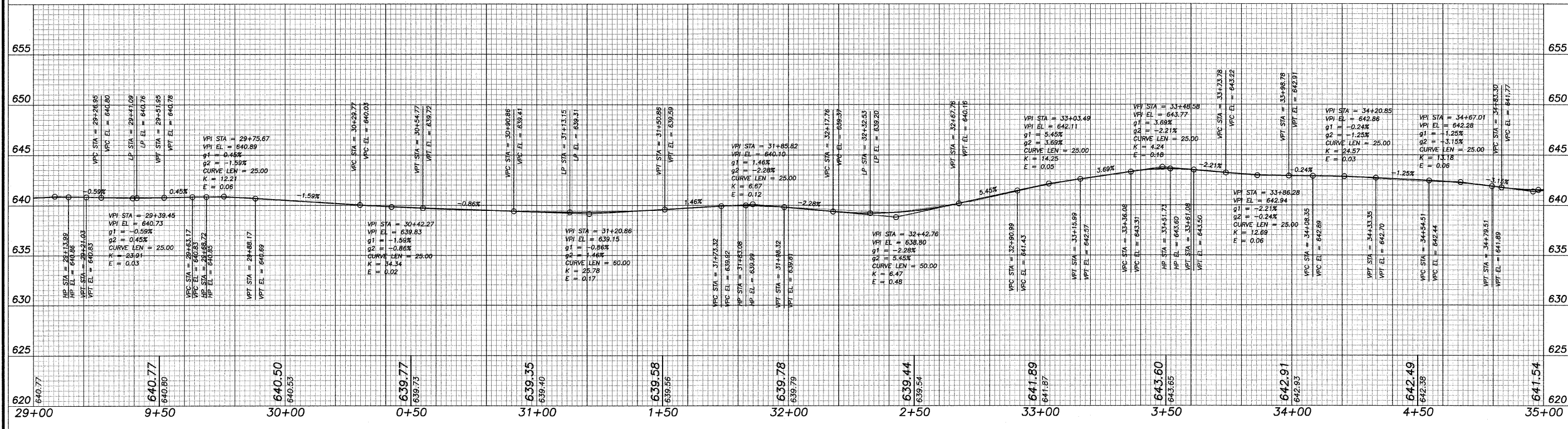


REVISIONS	DATE	BY

DESIGNED BY: DAB	DRAWN BY: BGS	CHECKED BY: BGS	DATE: 20 OCT 08

**wendler**  
 GROUND-BREAKING SOLUTIONS  
 engineers - surveyors - scientists  
 www.wendlergs.com    ph: 815.286.2261  
 Illinois Professional Design Firm No. 194-000948

PAVING PLANS  
 OF  
 SHARED MULTI-USE PATH  
 FOR  
 STERLING PARK DISTRICT



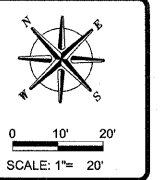
SHEET TITLE  
**PLAN & PROFILE**

JOB NUMBER  
 204005

DATE  
 06/10/2008

SHEET NO.  
**9 of 15**

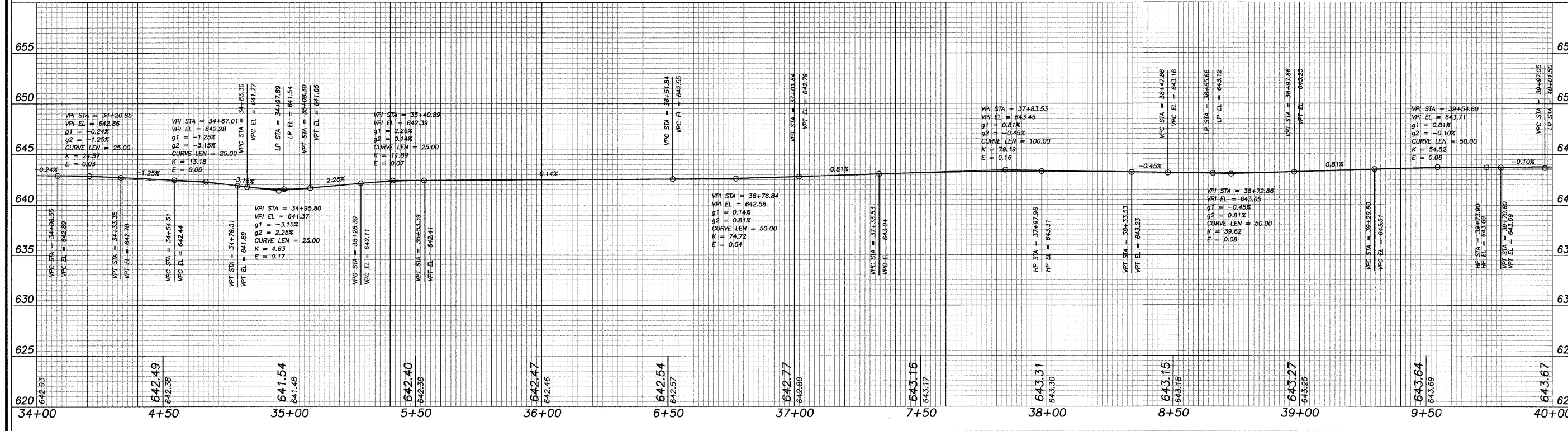
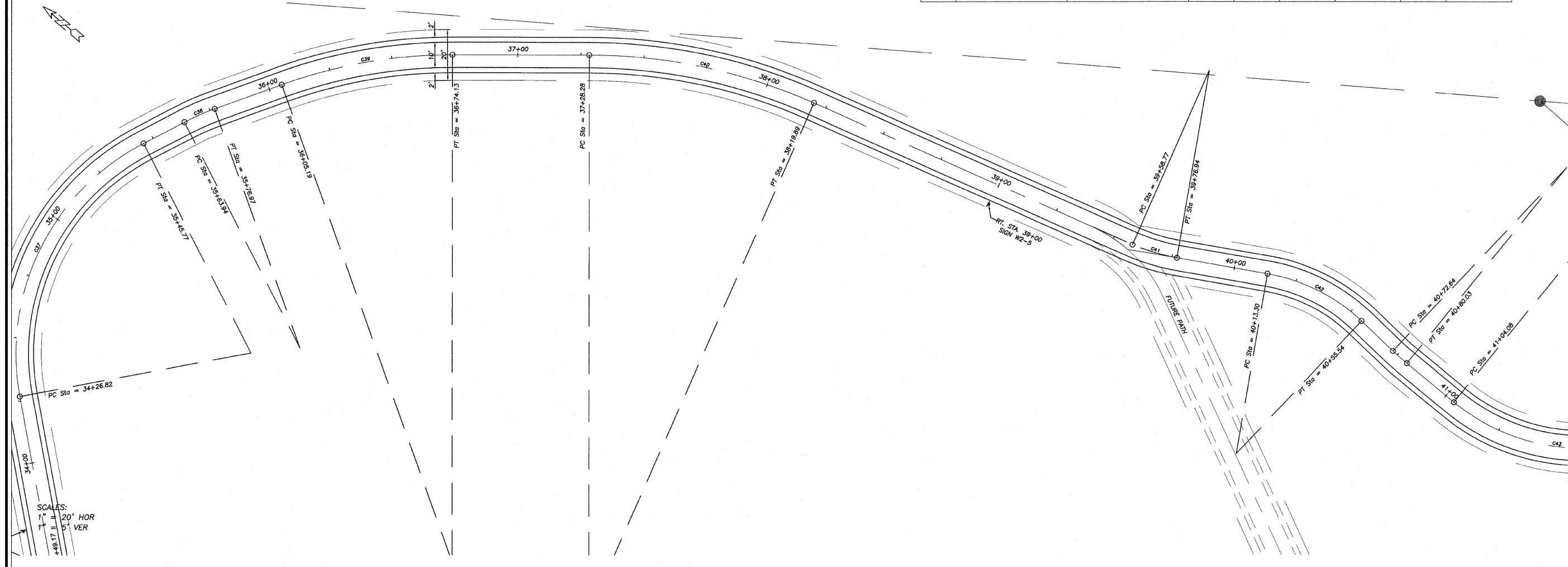
NUMBER	DEGREE OF CURVE - ARC	DEGREE OF CURVE - CHORD	TANGENT	RADIUS	ARC LENGTH	CHORD LENGTH	EXTERNAL	MID ORDINATE
C37	61°36'30"	65°02'44"	69.1722	93.0000	118.9494	111.0056	22.9042	18.3780
C38	57°17'45"	60°00'00"	6.5280	100.0000	13.0375	13.0283	0.2128	0.2124
C39	28°38'52"	28°57'18"	34.8120	200.0000	68.9334	68.5927	3.0071	2.9625
C40	26°02'37"	26°16'23"	46.4771	220.0000	91.6072	90.9468	4.8558	4.7509
C41	76°23'40"	83°37'14"	9.2264	75.0000	18.3605	18.3147	0.5654	0.5611
C42	79°34'39"	87°57'57"	21.7471	72.0000	42.2395	41.6364	3.2126	3.0754
C43	71°37'11"	77°21'52"	50.0458	80.0000	89.4418	84.8557	14.3641	12.1776



REVISIONS	DATE	BY	DESCRIPTION
	20	OCT	08

DESIGNED BY:	DAB
DRAWN BY:	BDS
CHECKED BY:	
DATE:	

**wendler**  
 GROUND-BREAKING SOLUTIONS  
 engineers - surveyors - scientists  
 www.wendlergs.com ph: 815.288.2261  
 Illinois Professional Design Firm No. 184-000848



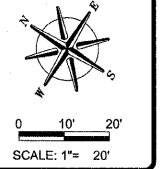
PAVING PLANS  
 OF  
 SHARED MULTI-USE PATH  
 FOR  
 STERLING PARK DISTRICT

SHEET TITLE  
**PLAN &  
 PROFILE**

JOB NUMBER  
 204005

DATE  
 06/10/2008

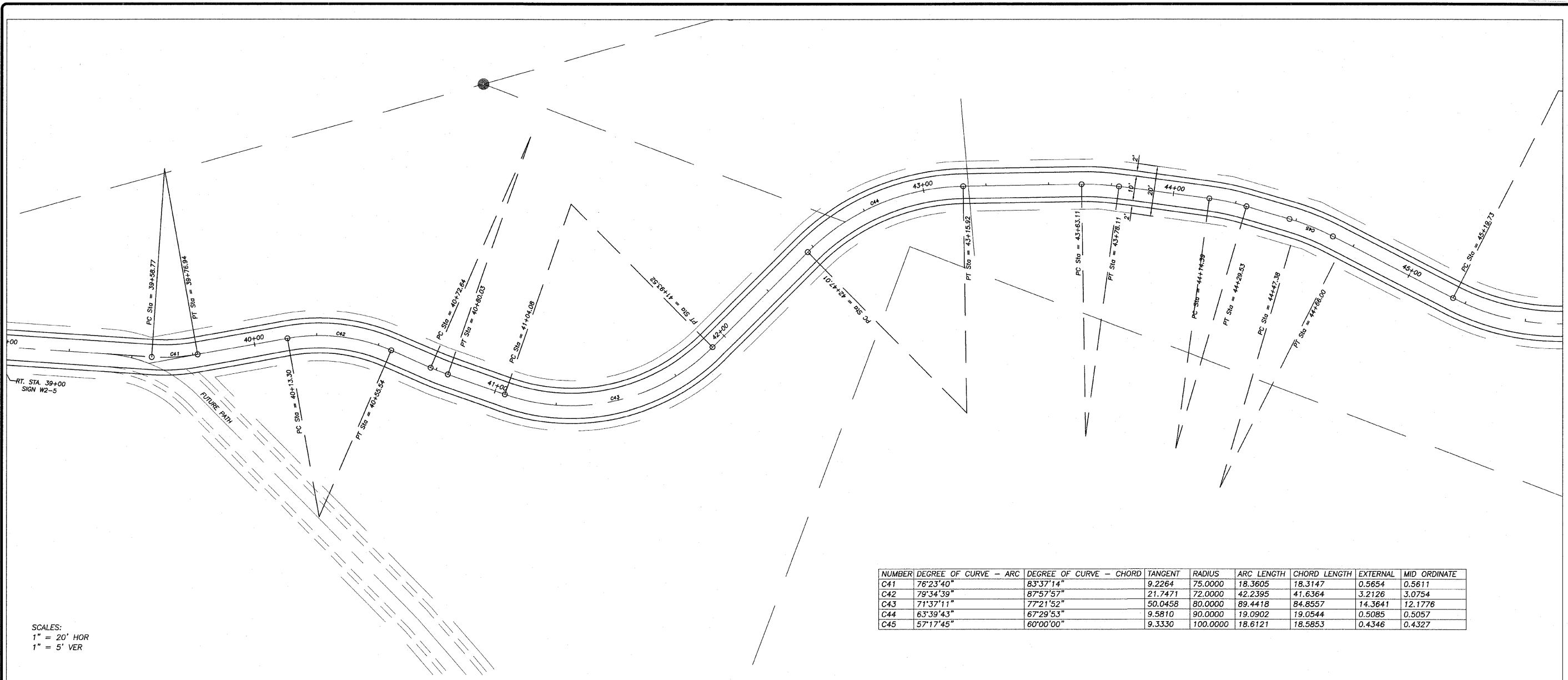
SHEET NO.  
**10 of 15**



REVISION	DATE
	20 OCT 08

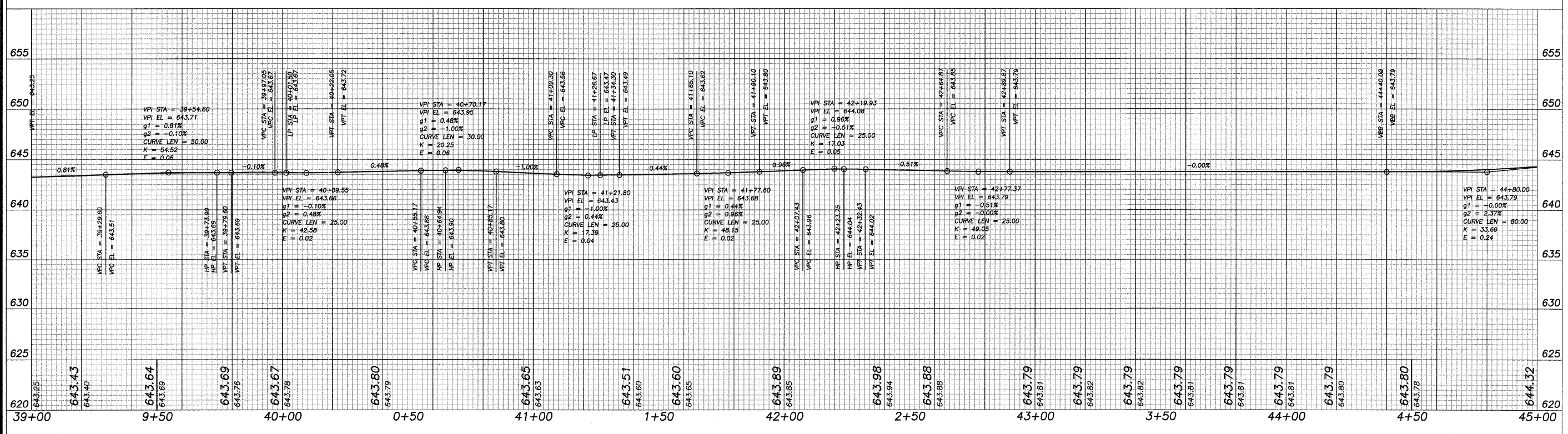
DESIGNED BY:	DAB
DRAWN BY:	BDS
DRAWING NAME:	
SURVEYED BY:	
BOOK NO.:	

**wendler**  
 GROUND-BREAKING SOLUTIONS  
 engineers - surveyors - scientists  
 www.wendlergs.com    ph: 815.288.2281  
 Illinois Professional Design Firm No. 184-000848



NUMBER	DEGREE OF CURVE - ARC	DEGREE OF CURVE - CHORD	TANGENT	RADIUS	ARC LENGTH	CHORD LENGTH	EXTERNAL	MID ORDINATE
C41	76°23'40"	83°37'14"	9.2264	75.0000	18.3605	18.3147	0.5654	0.5611
C42	79°34'39"	87°57'57"	21.7471	72.0000	42.2395	41.6364	3.2126	3.0754
C43	71°37'11"	77°21'52"	50.0458	80.0000	89.4418	84.8557	14.3641	12.1776
C44	63°39'43"	67°29'53"	9.5810	90.0000	19.0902	19.0544	0.5085	0.5057
C45	57°17'45"	60°00'00"	9.3330	100.0000	18.6121	18.5853	0.4346	0.4327

SCALES:  
 1" = 20' HOR  
 1" = 5' VER



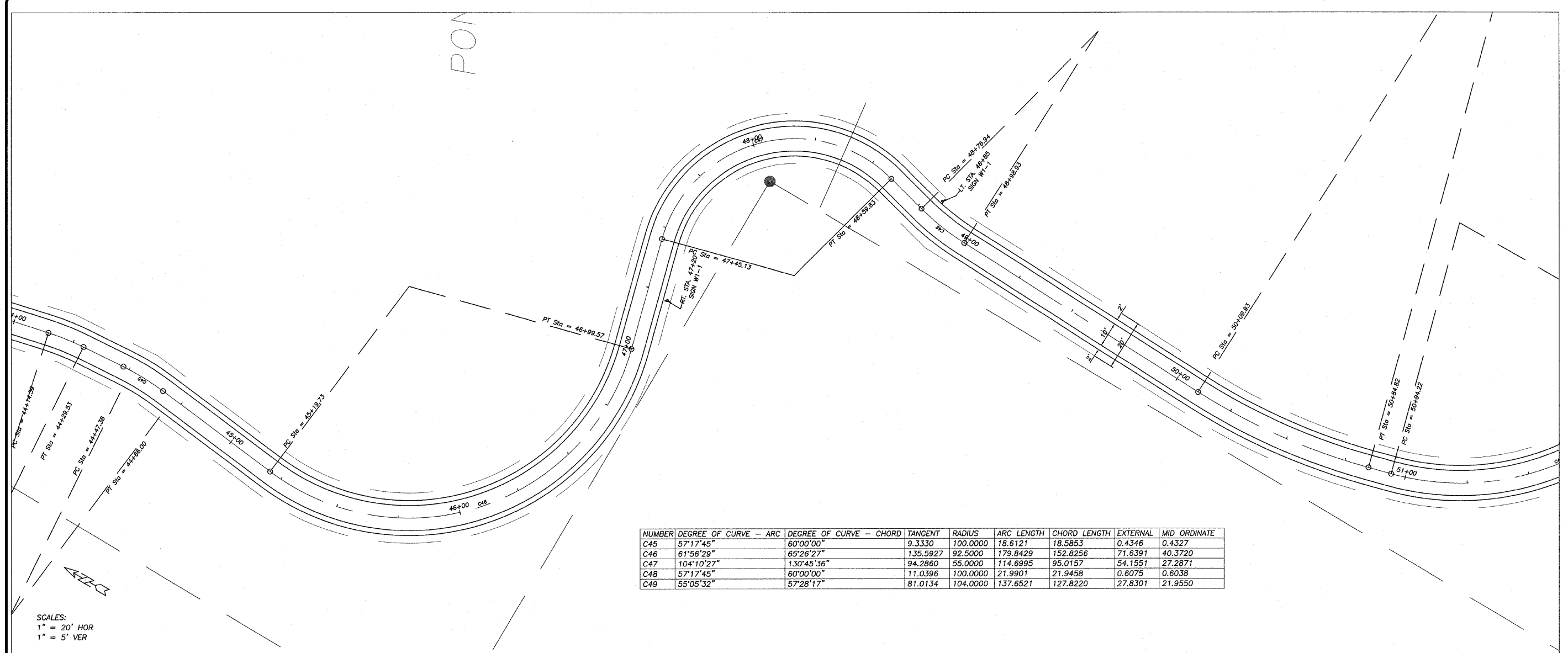
PAVING PLANS  
 OF  
 SHARED MULTI-USE PATH  
 FOR  
 STERLING PARK DISTRICT

SHEET TITLE  
**PLAN & PROFILE**

JOB NUMBER  
 204005

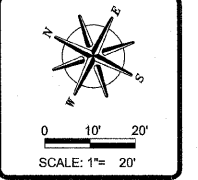
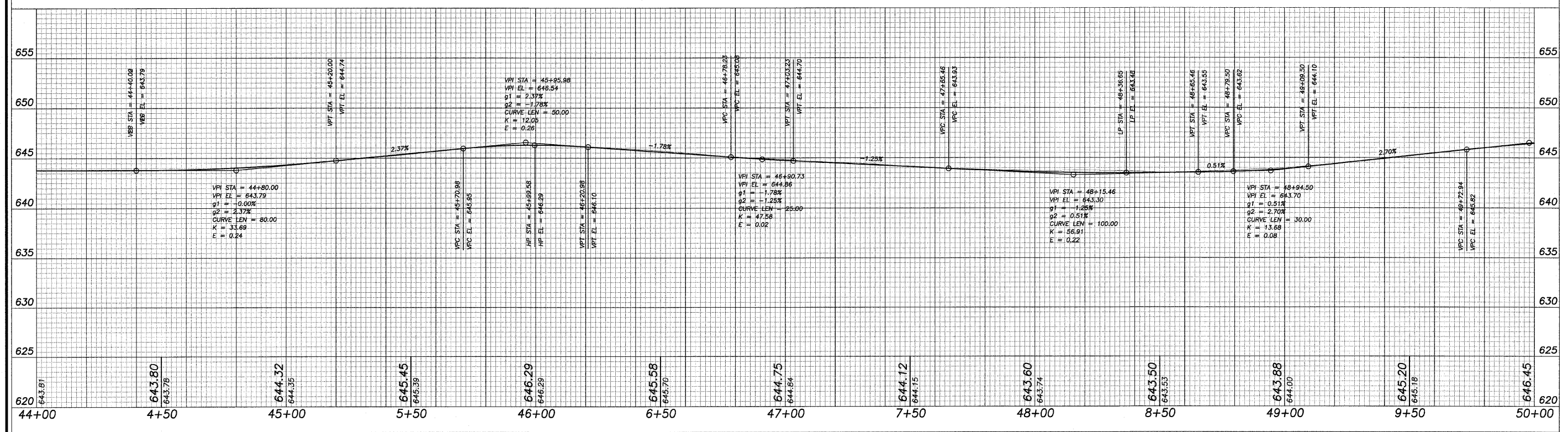
DATE  
 06/10/2008

SHEET NO.  
**11 of 15**



NUMBER	DEGREE OF CURVE - ARC	DEGREE OF CURVE - CHORD	TANGENT	RADIUS	ARC LENGTH	CHORD LENGTH	EXTERNAL	MID ORDINATE
C45	57°17'45"	60°00'00"	9.3330	100.0000	18.6121	18.5853	0.4346	0.4327
C46	61°56'29"	65°26'27"	135.5927	92.5000	179.8429	152.8256	71.6391	40.3720
C47	104°10'27"	130°45'36"	94.2860	55.0000	114.6995	95.0157	54.1551	27.2871
C48	57°17'45"	60°00'00"	11.0396	100.0000	21.9901	21.9458	0.6075	0.6038
C49	55°05'32"	57°28'17"	81.0134	104.0000	137.6521	127.8220	27.8301	21.9550

SCALES:  
1" = 20' HOR  
1" = 5' VER



REVISIONS	DATE	BY
	20 OCT 08	

DESIGNED BY: DAB	DRAWN BY: BDS	CHECKED BY: BDS	SUBMITTED BY: BDS	BOOK NO:
------------------	---------------	-----------------	-------------------	----------

**wendler**  
 GROUND-BREAKING SOLUTIONS  
 engineers - surveyors - scientists  
 www.wendlergs.com    ph: 815.288.2281  
 Illinois Professional Design Firm No. 184-000948

PAVING PLANS  
 OF  
 SHARED MULTI-USE PATH  
 FOR  
 STERLING PARK DISTRICT

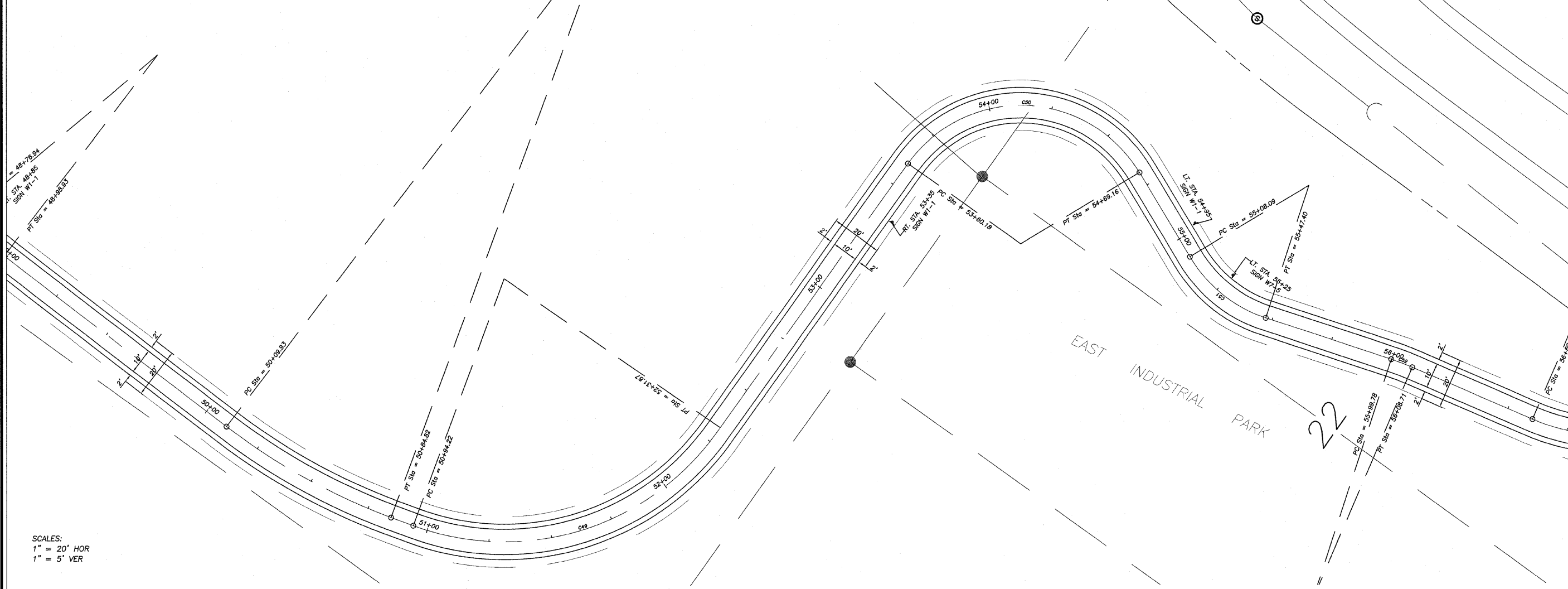
SHEET TITLE  
**PLAN & PROFILE**

JOB NUMBER  
 204005

DATE  
 06/10/2008

SHEET NO.  
**12 of 15**

NUMBER	DEGREE OF CURVE - ARC	DEGREE OF CURVE - CHORD	TANGENT	RADIUS	ARC LENGTH	CHORD LENGTH	EXTERNAL	MID ORDINATE
C48	57°17'45"	60°00'00"	11.0396	100.0000	21.9901	21.9458	0.6075	0.6038
C49	55°05'32"	57°28'17"	81.0134	104.0000	137.6521	127.8220	27.8301	21.9550
C50	104°10'27"	130°45'36"	83.9274	55.0000	108.9753	92.0042	45.3435	24.8535
C51	104°10'27"	130°45'36"	20.5355	55.0000	39.3078	38.4766	3.7087	3.4744
C52	57°17'45"	60°00'00"	4.4703	100.0000	8.9346	8.9316	0.0999	0.0998
C53	76°23'40"	83°37'14"	24.6941	75.0000	47.7113	46.9109	3.9607	3.7621



REVISION	DATE	BY
	20 OCT 08	

DESIGNED BY:	DAB
DRAWN BY:	BDS
CHECKED BY:	
DATE:	

**wendler**  
 GROUND-BREAKING SOLUTIONS  
 engineers · surveyors · scientists  
 www.wendlergs.com    ph: 815.286.2261  
 Illinois Professional Design Firm No. 194-000948

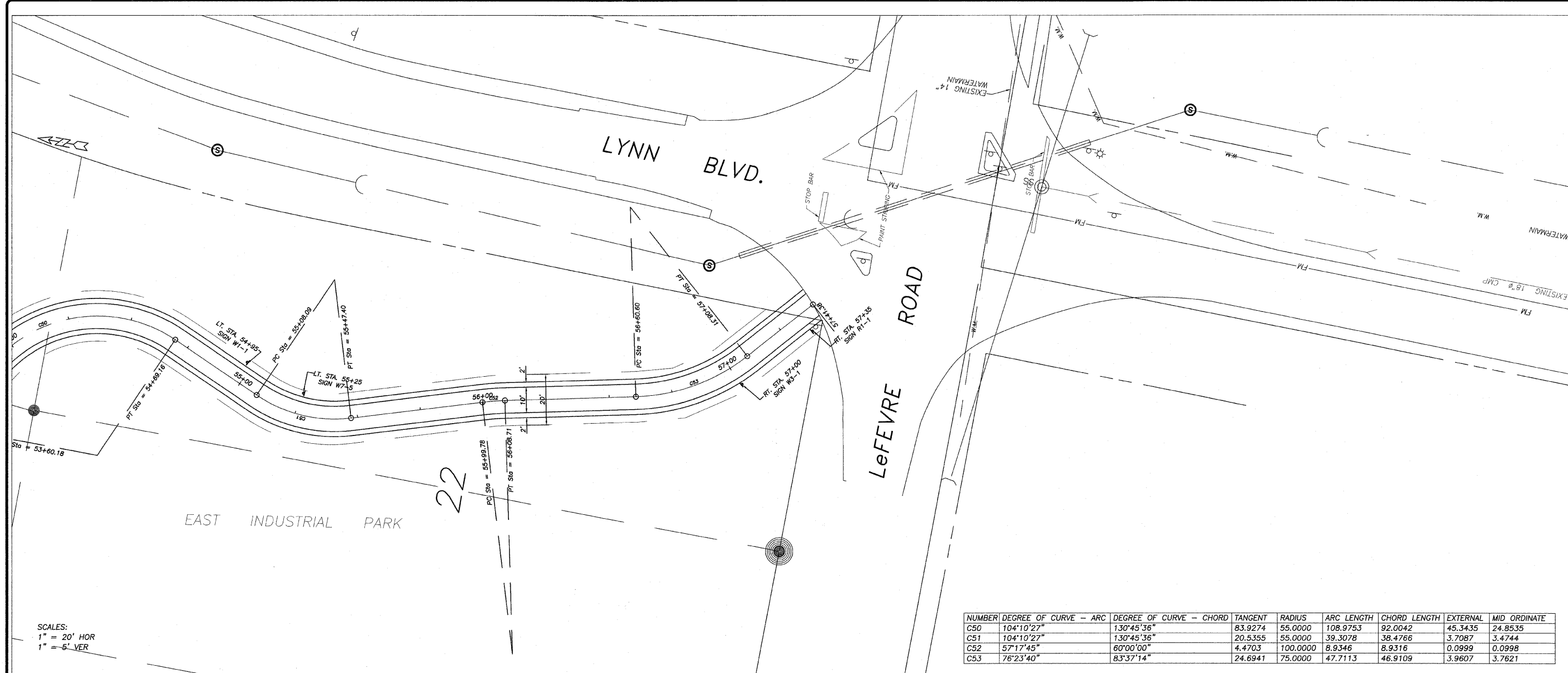
PAVING PLANS  
 OF  
 SHARED MULTI-USE PATH  
 FOR  
 STERLING PARK DISTRICT

SHEET TITLE  
**PLAN & PROFILE**

JOB NUMBER  
 204005

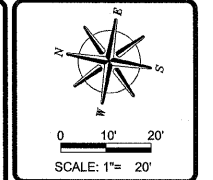
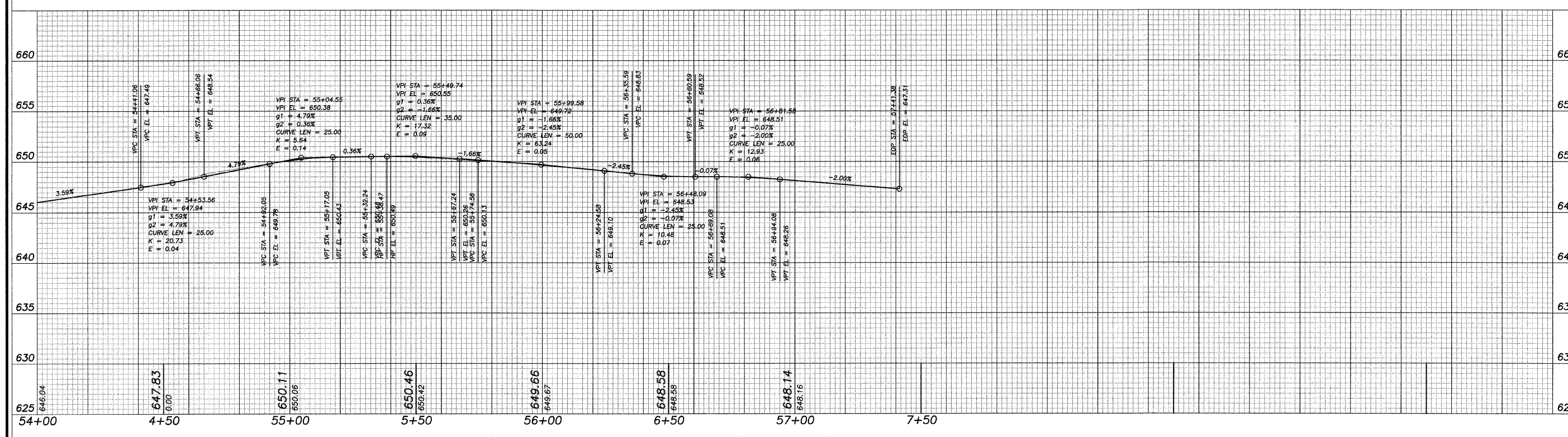
DATE  
 06/10/2008

SHEET NO.  
**13 of 15**



SCALES:  
1" = 20' HOR  
1" = 5' VER

NUMBER	DEGREE OF CURVE - ARC	DEGREE OF CURVE - CHORD	TANGENT	RADIUS	ARC LENGTH	CHORD LENGTH	EXTERNAL	MID ORDINATE
C50	104°10'27"	130°45'36"	83.9274	55.0000	108.9753	92.0042	45.3435	24.8535
C51	104°10'27"	130°45'36"	20.5355	55.0000	39.3078	38.4766	3.7087	3.4744
C52	57°17'45"	60°00'00"	4.4703	100.0000	8.9346	8.9316	0.0999	0.0998
C53	76°23'40"	83°37'14"	24.6941	75.0000	47.7113	46.9109	3.9607	3.7621



REVISIONS

REVISION	DATE	BY
	20 OCT 08	

DESIGNED BY: DAB  
DRAWN BY: BJS  
CHECKED BY: [blank]  
SURVEYED BY: [blank]  
PROJECT NO: [blank]

**wendler**  
GROUND-BREAKING SOLUTIONS  
engineers - surveyors - scientists  
www.wendlers.com ph: 815.289.2281  
Illinois Professional Design Firm No. 194-000948

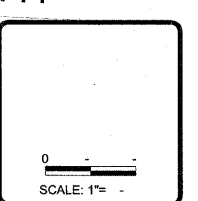
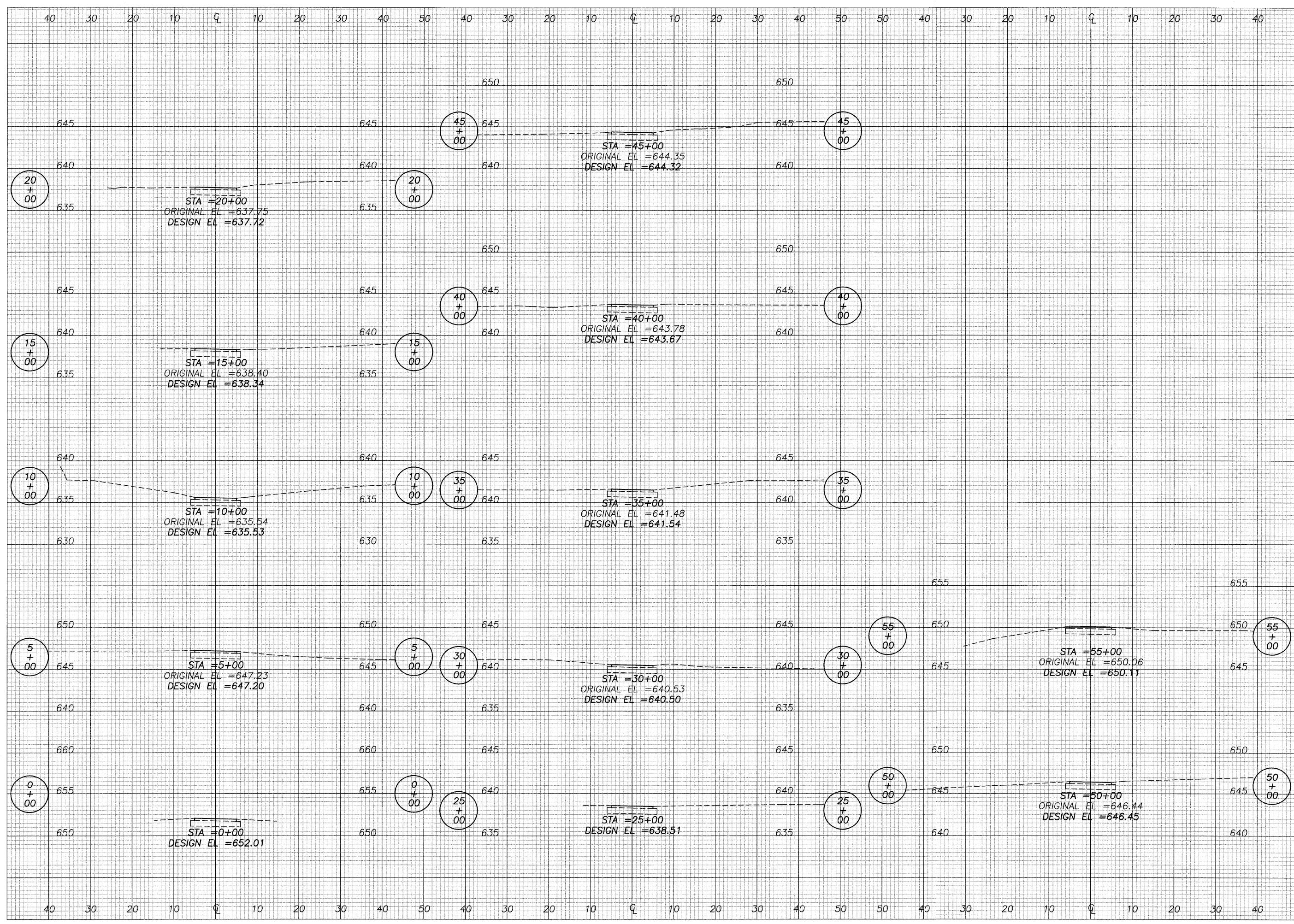
PAVING PLANS  
OF  
SHARED MULTI-USE PATH  
FOR  
STERLING PARK DISTRICT

SHEET TITLE  
**PLAN & PROFILE**

JOB NUMBER  
204005

DATE  
06/10/2008

SHEET NO.  
**14 of 15**



REVISIONS

REVISION	DATE	BY
	20 OCT 08	

DESIGNED BY: DAB  
 DRAWN BY: BDS  
 CHECKED BY: 204005  
 SURVEYED BY:  
 BOOK NO:

**wendler**  
 GROUNDBREAKING SOLUTIONS  
 engineers · surveyors · scientists  
 www.wendlers.com    ph: 815.288.2261  
 Illinois Professional Design Firm No. 194-000948

PAVING PLANS  
 OF  
 SHARED MULTI-USE PATH  
 FOR  
 STERLING PARK DISTRICT

SHEET TITLE  
**CROSS SECTIONS**

JOB NUMBER  
 204005

DATE  
 06/10/2008

SHEET NO.  
**15 of 15**

2008/07/09 10:52:52 AM 12/20/08 8:10:44 AM BDS