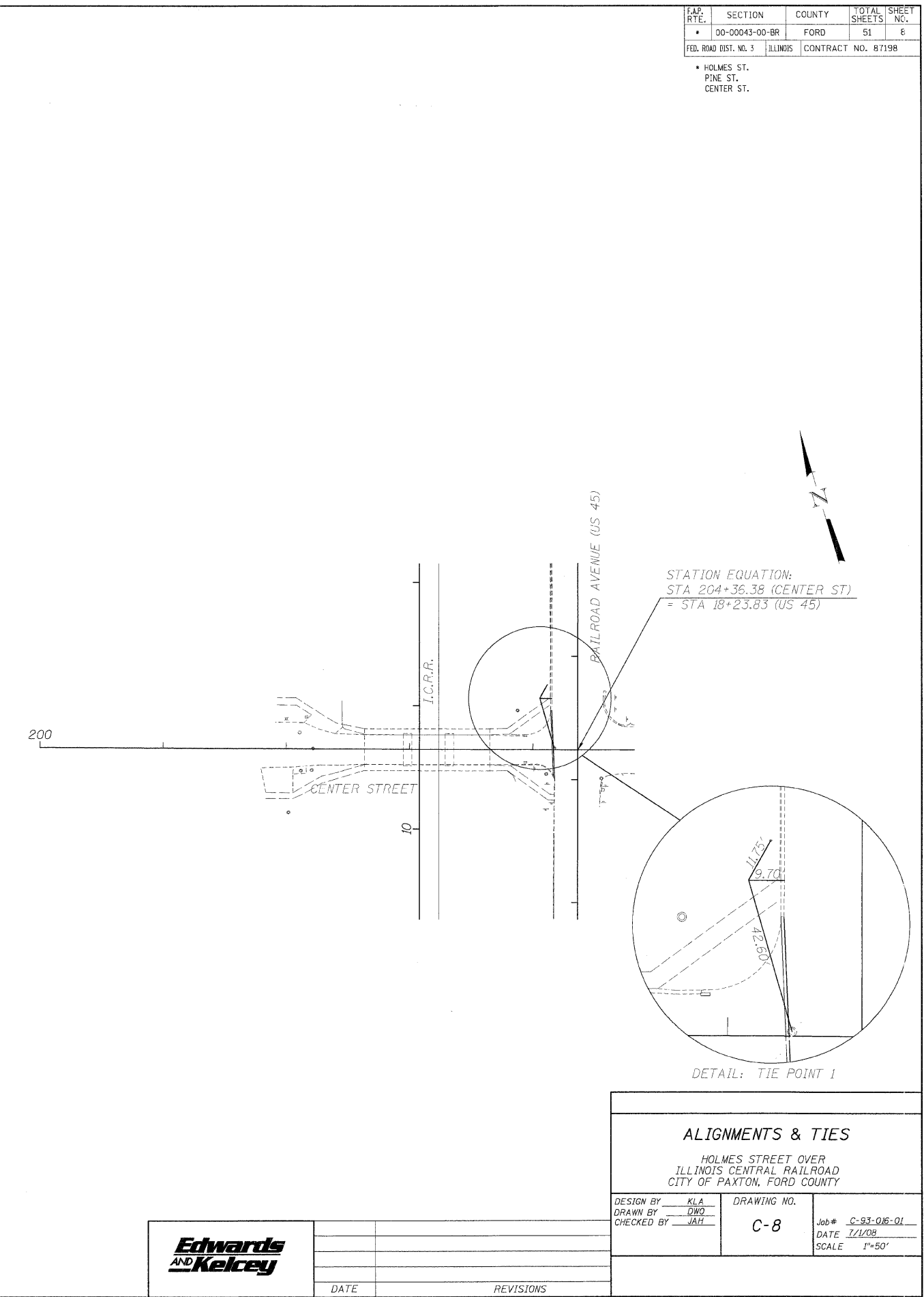
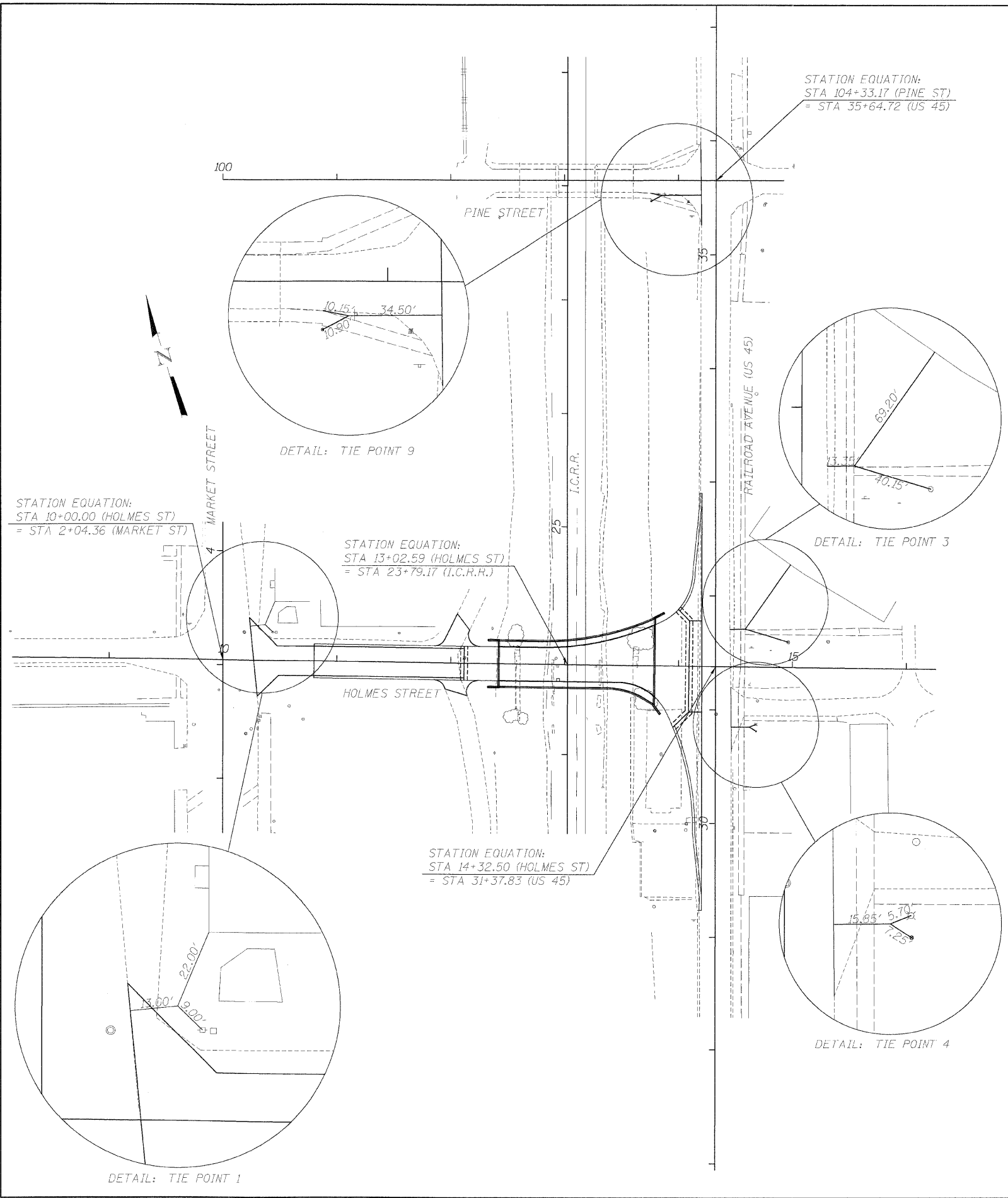


6/30/2008 1:56:07 PM

F:\00099001\Chicgoe CAD01\Sheet-rs-08-alignments\Ties.dgn

FAR. RTE.	SECTION	COUNTY	TOTAL SHEETS	SHEET NO.
• 00-00043-00-BR		FORD	51	6
FED. ROAD DIST. NO. 3	ILLINOIS	CONTRACT NO. 87198		

• HOLMES ST.
• PINE ST.
• CENTER ST.



ALIGNMENTS & TIES			
HOLMES STREET OVER ILLINOIS CENTRAL RAILROAD CITY OF PAXTON, FORD COUNTY			
DESIGN BY KLA	DRAWING NO. C-8	Job# C-93-016-01	DATE 7/1/08
DRAWN BY DWG		SCALE 1"=50'	
CHECKED BY JAH			
DATE	REVISIONS		

