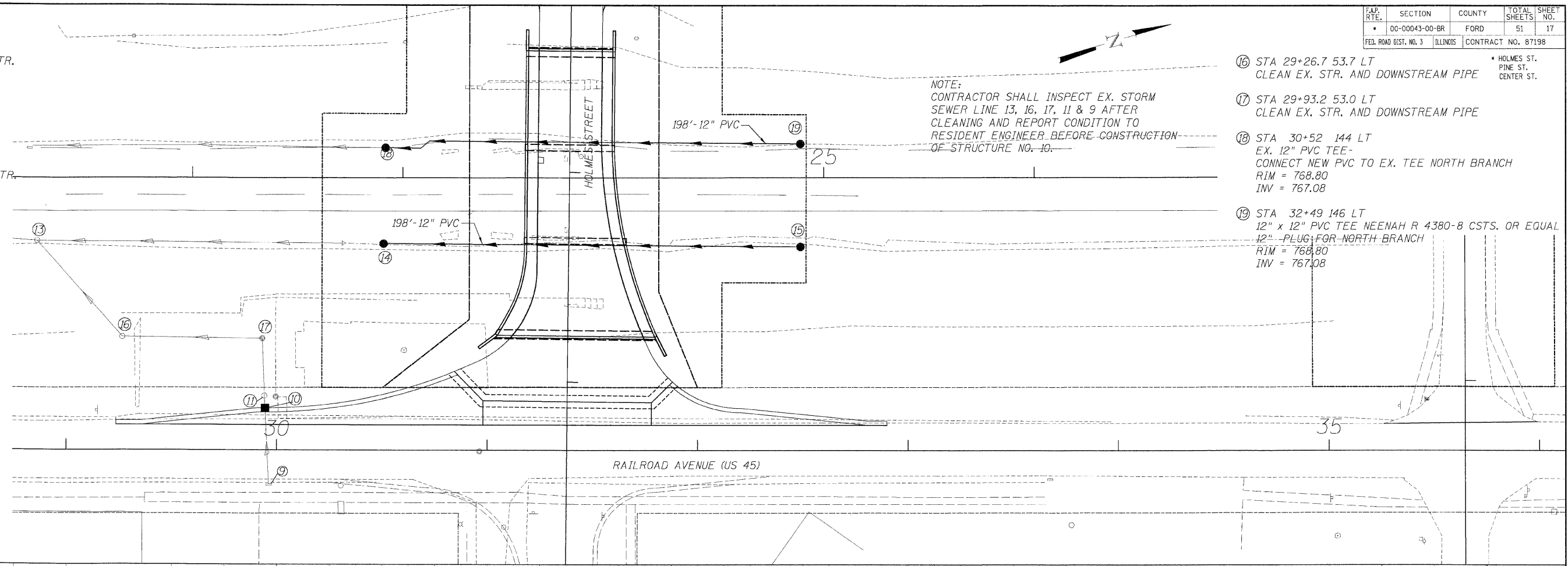


6/20/2008 4:59:20 PM

F.P. RTE.	SECTION	COUNTY	TOTAL SHEETS	SHEET NO.
• 00-00043-00-BR		FORD	51	17
FED. ROAD DIST. NO. 3	ILLINOIS	CONTRACT NO. 87198		

- ⑨ STA 29+96.1 16.2 RT
CLEAN EX. DRAINAGE STR.
- ⑩ STA 29+94.5 17.9 LT
CB TA T24 F&G
RIM=793.50
BUILD OVER EX.
STORM SEWER
- ⑪ STA 29+94.2 25.9 LT
CLEAN EX DRAINAGE STR.
AND DOWNSTREAM PIPE
INV S.=790.32
RIM=793.62
- ⑫ DELETED
- ⑬ STA 28+86.2 99.5 LT
CONNECT TO EX MH
INV E.=766.76
BLOCK EX. PIPE NE
- ⑭ STA 30+52.0 98.0' LT
EX. 12" PVC TEE
CONNECT NEW
12" PVC TO EX. TEE
(NORTH)
RIM=768.0
INV=766.88
- ⑮ STA 32+48.9 97.1 LT
12" x 12" PVC TEE
NEENAH R 4380-8
CSTG (OR EQUAL)
12" PLUG FOR
NORTH BRANCH
RIM=768.2
INV=767.13



NOTE:
CONTRACTOR SHALL INSPECT EX. STORM
SEWER LINE 13, 16, 17, 11 & 9 AFTER
CLEANING AND REPORT CONDITION TO
RESIDENT ENGINEER BEFORE CONSTRUCTION
OF STRUCTURE NO. 10.

- ⑯ STA 29+26.7 53.7 LT
CLEAN EX. STR. AND DOWNSTREAM PIPE
- ⑰ STA 29+93.2 53.0 LT
CLEAN EX. STR. AND DOWNSTREAM PIPE
- ⑱ STA 30+52 144 LT
EX. 12" PVC TEE-
CONNECT NEW PVC TO EX. TEE NORTH BRANCH
RIM = 768.80
INV = 767.08
- ⑲ STA 32+49 146 LT
12" x 12" PVC TEE NEENAH R 4380-8 CSTS. OR EQUAL
12" PLUG FOR NORTH BRANCH
RIM = 768.80
INV = 767.08

PA:0801800.CHICAGO CAD: Sheets V17 DU US45.dgn

DRAINAGE AND UTILITIES
RAILROAD AVENUE (US 45)
HOLMES STREET OVER
ILLINOIS CENTRAL RAILROAD
CITY OF PAXTON, FORD COUNTY

DESIGN BY KLA	DRAWING NO. C-17	Job# C-93-016-01
DRAWN BY DWO	DATE 7/1/08	H: 1"=25'
CHECKED BY JAH	SCALE V: 1"=5'	



DATE	REVISIONS