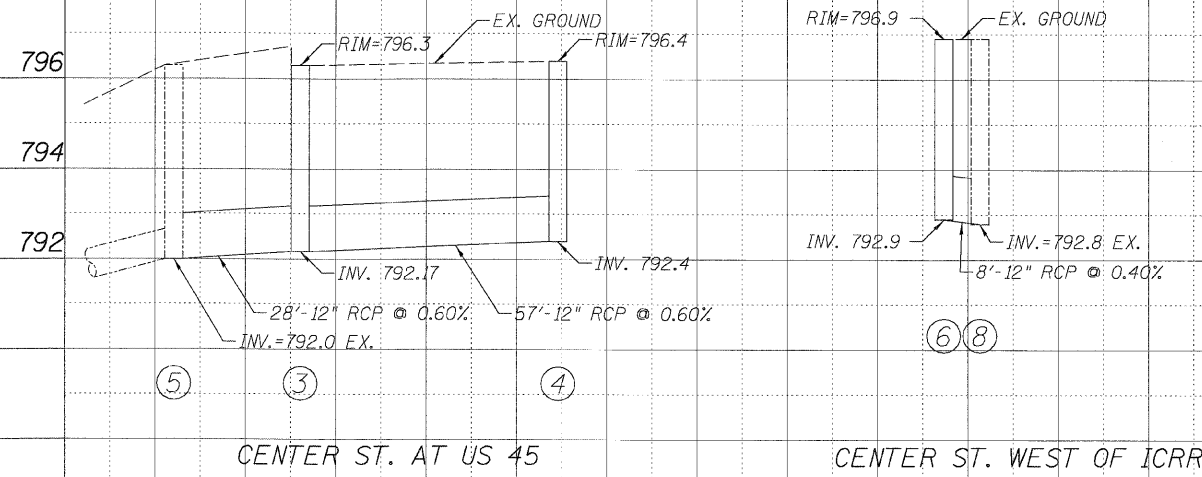
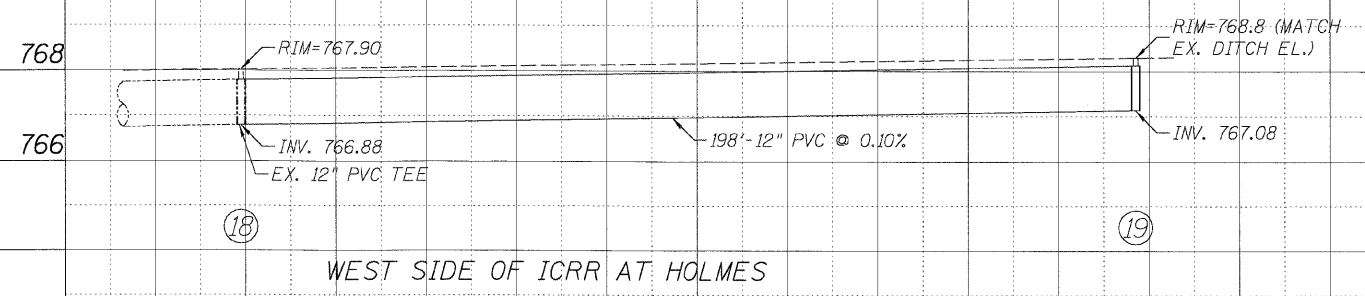
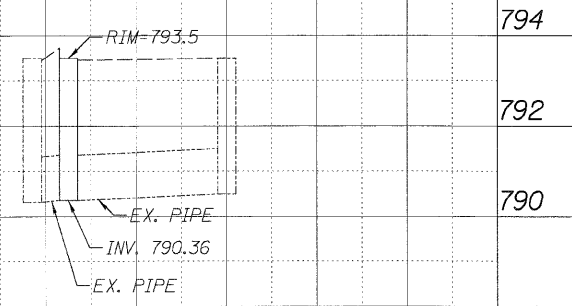
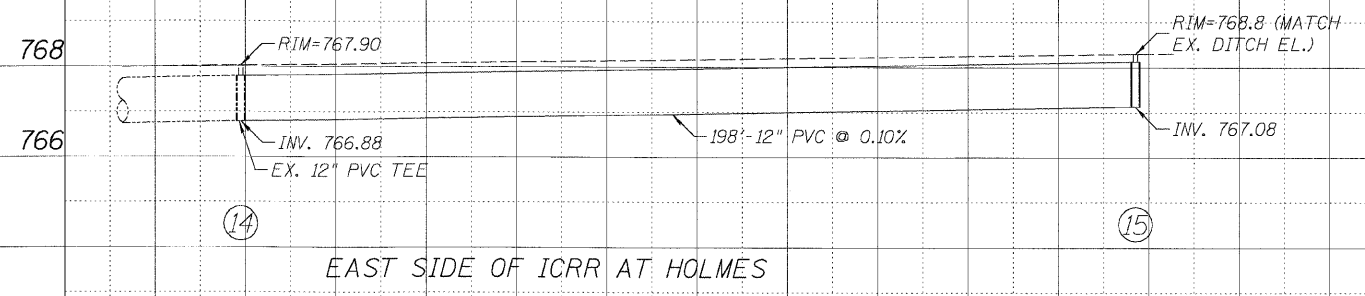


6/30/2008 14:58:21 PM

F.P. RTE.	SECTION	COUNTY	TOTAL SHEETS	SHEET NO.
• 00-00043-00-BR		FORD	51	18
FED. ROAD DIST. NO. 3	ILLINOIS	CONTRACT NO. 87198		
• HOLMES ST. PINE ST. CENTER ST.				



CONTRACTOR SHALL VERIFY RIMS AND INVERT ELEVATIONS OF STRUCTURES NO.'S 5, 8, 9, & 11 BEFORE SHOP DRAWINGS ARE ORDERED AND COMPLETED.



**DRAINAGE PROFILES**  
HOLMES STREET OVER  
ILLINOIS CENTRAL RAILROAD  
CITY OF PAXTON, FORD COUNTY

DESIGN BY KLA	DRAWING NO. C-18	Job# C-93-016-01
DRAWN BY DJO	DATE 7/1/08	SCALE 1/4"=1'-0"
CHECKED BY JAH		SCALE 1/2"=1'-0"

**Edwards AND Kelcey**

DATE	REVISIONS

P:\0009500\Chicccc CAD\Drawings\18\_Drainage\Profile.dgn