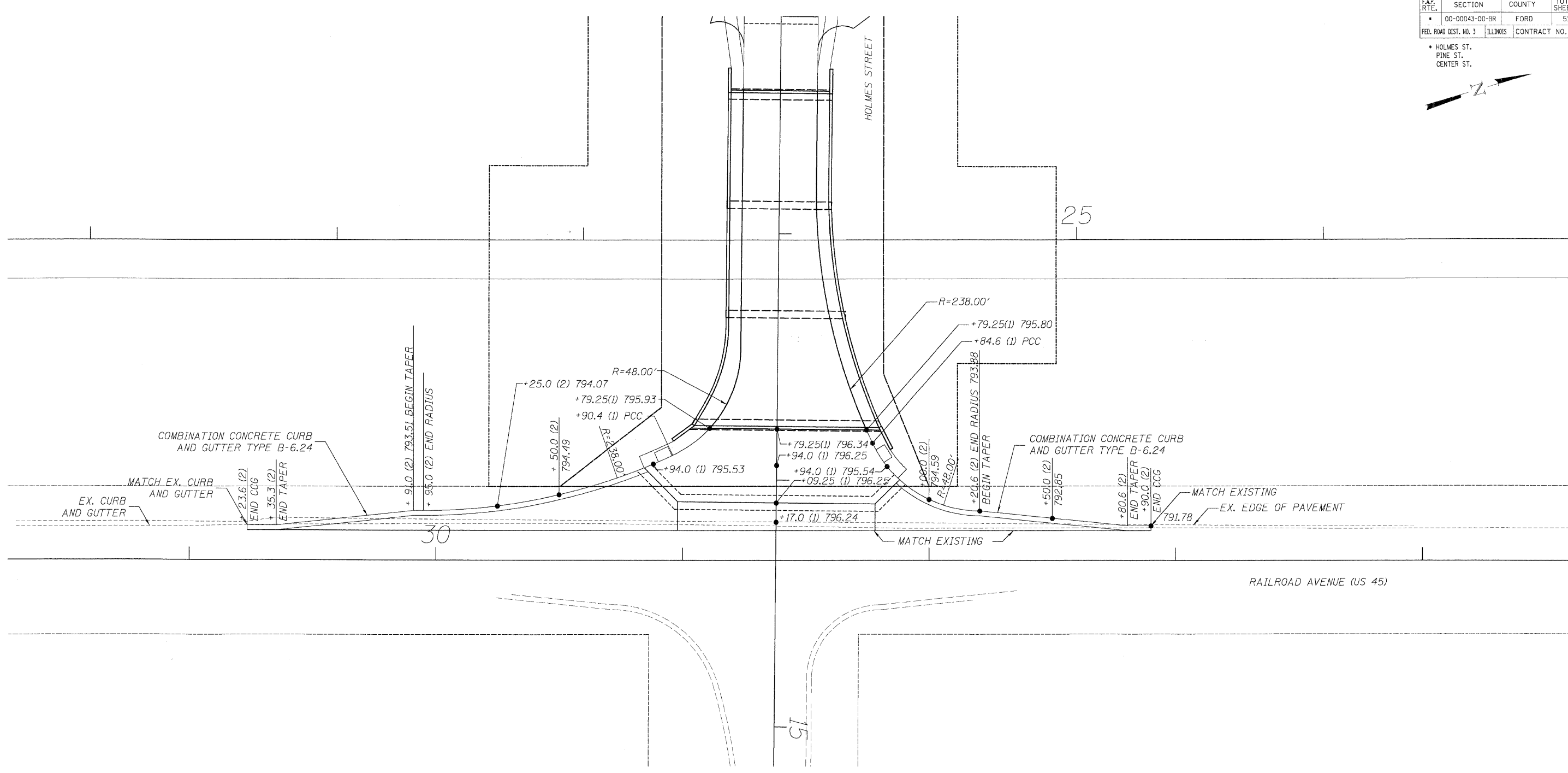


6/30/2008 4:55:34 PM

F:\000000\Chicago_CADD\Sheets\28_De\11_48\Holmes.dgn

F.P. RTE.	SECTION	COUNTY	TOTAL SHEETS	SHEET NO.
• 00-00043-00-BR		FORD	51	28
FED. ROAD DIST. NO. 3	ILLINOIS	CONTRACT NO. 87196		

• HOLMES ST.
PINE ST.
CENTER ST.



NOTES

- ① STATIONING ALONG HOLMES STREET
- ② STATIONING ALONG RAILROAD AVENUE (US 45)
- ③ ALL ELEVATIONS SHOWN FOR CURB AND GUTTER ARE ON FLOWLINE OF GUTTER.

**CURB AND PAVEMENT ELEVATIONS
HOLMES STREET AND US 45**
HOLMES STREET OVER
ILLINOIS CENTRAL RAILROAD
CITY OF PAXTON, FORD COUNTY

DESIGN BY KLA
DRAWN BY DWO
CHECKED BY JAH

DRAWING NO.
C-28

Job# C-93-016-01
DATE 7/1/08
SCALE 1"=20'



DATE	REVISIONS