

FAR. RTE.	SECTION	COUNTY	TOTAL SHEETS	SHEET NO.
•	00-0043-00-BR	FORD	51	34
FED. ROAD DIST. NO. 3		ILLINOIS	CONTRACT NO. 87198	

HOLMES ST.  
PINE ST.  
CENTER ST.

**INDEX OF SHEETS**

- S-1 GENERAL PLAN AND ELEVATION
- S-2 SUMMARY OF QUANTITIES, GENERAL NOTES AND DETAILS
- S-3 TOP OF SLAB ELEVATIONS - PLAN
- S-4 TOP OF SLAB ELEVATIONS - TABLES
- S-5 SUPERSTRUCTURE BOTTOM REINFORCEMENT
- S-6 SUPERSTRUCTURE TOP REINFORCEMENT
- S-7 SUPERSTRUCTURE DETAILS
- S-8 SUPERSTRUCTURE DETAILS AND BAR SCHEDULE
- S-9 TEXAS RAILING DETAILS
- S-10 LIGHTING AND ELECTRICAL DETAILS
- S-11 EXPANSION JOINT AND BEARING DETAILS
- S-12 WEST ABUTMENT
- S-13 WEST ABUTMENT DETAILS
- S-14 EAST ABUTMENT
- S-15 EAST ABUTMENT DETAILS
- S-16 PIER 1
- S-17 PIER 2
- S-18 SOIL BORING LOGS

**HOLMES STREET BRIDGE**  
BUILT 2009 BY  
CITY OF PAXTON  
SEC. 00-0043-00-BR  
STATION 12+88.33  
STR. NO. 027-6505 LOADING HS20

**NAME PLATE**  
SEE STD. 515001

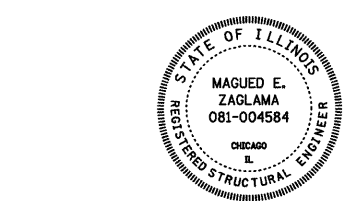
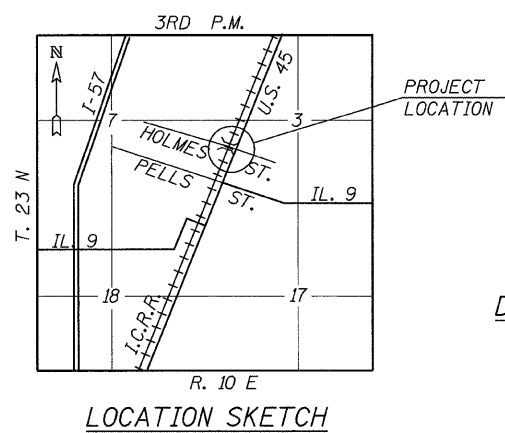
**DESIGN SPECIFICATIONS**  
2002 AASHTO STANDARD  
SPECIFICATIONS - 17TH ED.

**LOADING HS20-44**  
ALLOW 50#/SQ. FT. FOR  
FUTURE WEARING SURFACE.

**SEISMIC DATA**  
SEISMIC PERFORMANCE CATEGORY (SPC) = A  
BEDROCK ACCELERATION COEFFICIENT (A) = 0.4  
SITE COEFFICIENT (S) = 1

**DESIGN STRESSES**  
FIELD UNITS  
f'c = 3,500 PSI  
fy = 60,000 PSI (REINF.)

**UTILITIES**  
FOR EXISTING UTILITIES, SEE SHEET C-9.  
FOR PROPOSED UTILITIES, SEE C-14 & C-16.



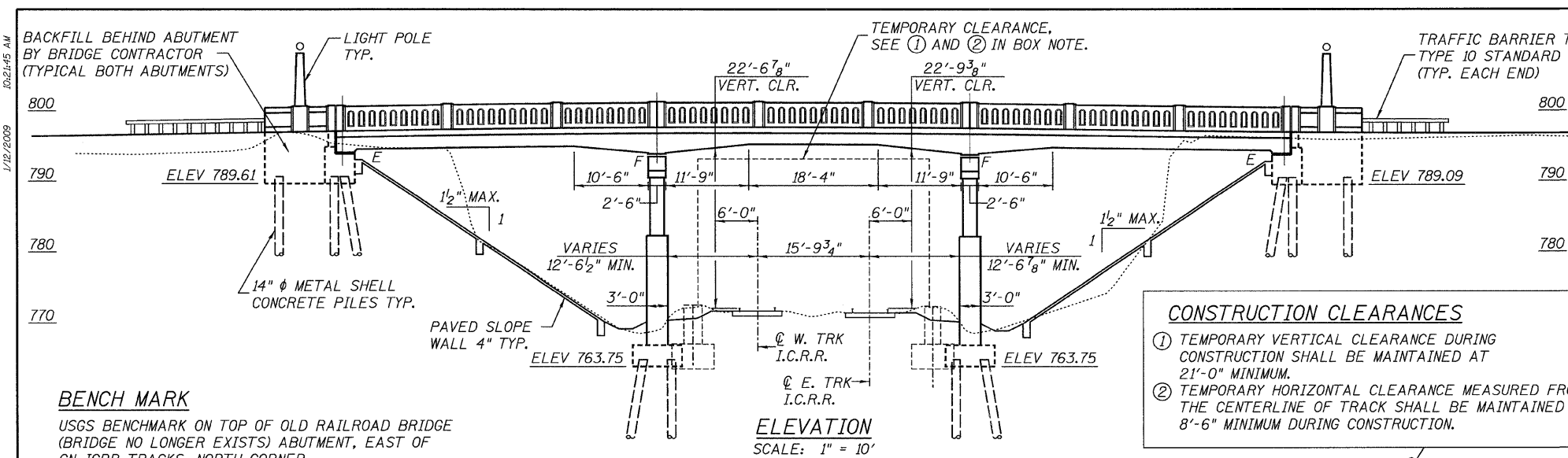
I CERTIFY THAT TO THE BEST OF KNOWLEDGE, INFORMATION AND BELIEF, THIS BRIDGE DESIGN IS STRUCTURALLY ADEQUATE FOR THE DESIGN LOADING SHOWN ON THE PLANS. THE DESIGN IS AN ECONOMICAL ONE FOR THE STYLE OF STRUCTURE AND COMPLIES WITH THE REQUIREMENTS OF THE CURRENT "AASHTO STANDARD SPECIFICATIONS FOR HIGHWAY BRIDGES".

SIGNED: *Magued E. Zaglala*  
DATE: January 12, 2009  
EXPIRES: November 30, 2010



DATE	REVISIONS

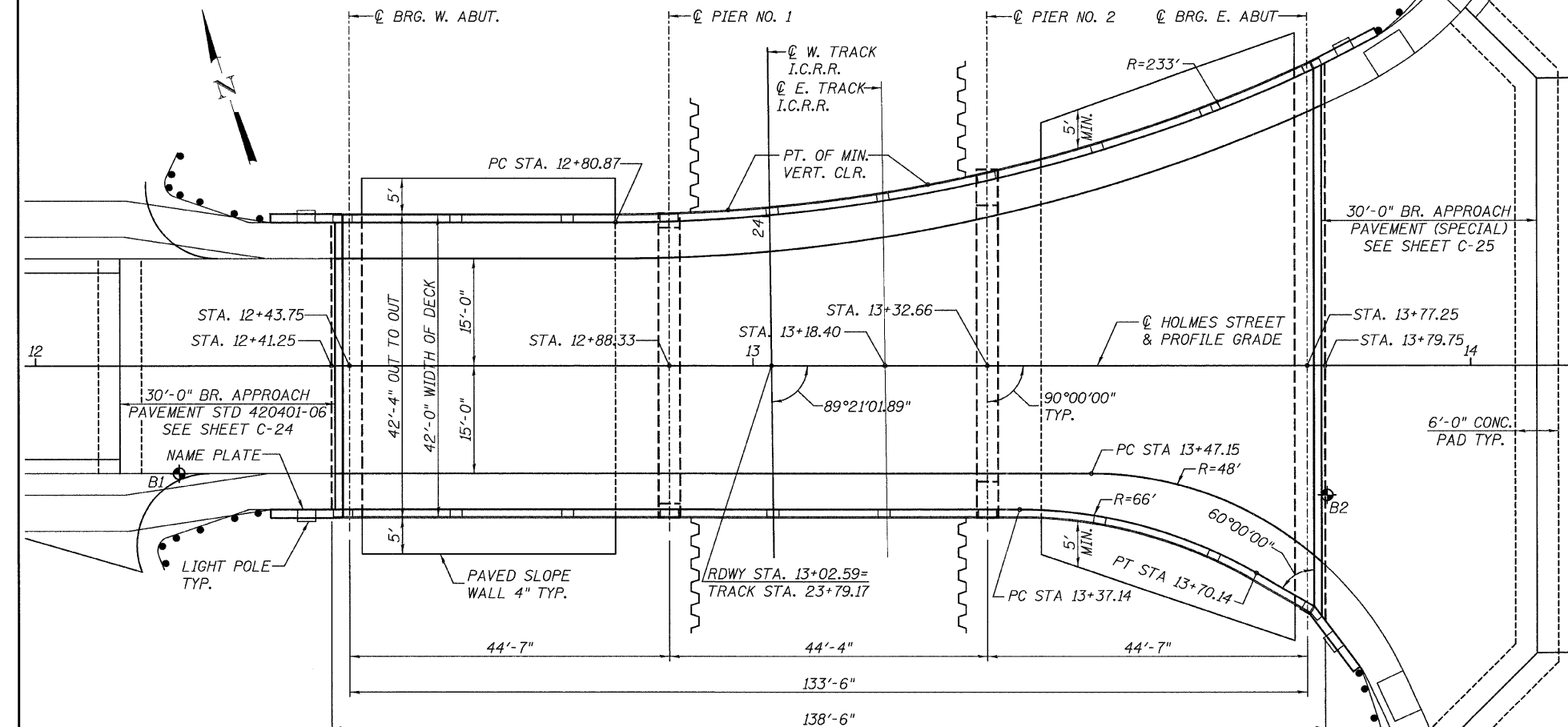
GENERAL PLAN AND ELEVATION	
HOLMES STREET OVER ILLINOIS CENTRAL RAILROAD CITY OF PAXTON, FORD COUNTY	
DESIGN BY: BAP	DRAWING NO.: S-1
DRAWN BY: DJR	Job#: C-93-016-01
CHECKED BY: DRS	DATE: 7/1/08
	SCALE: AS SHOWN



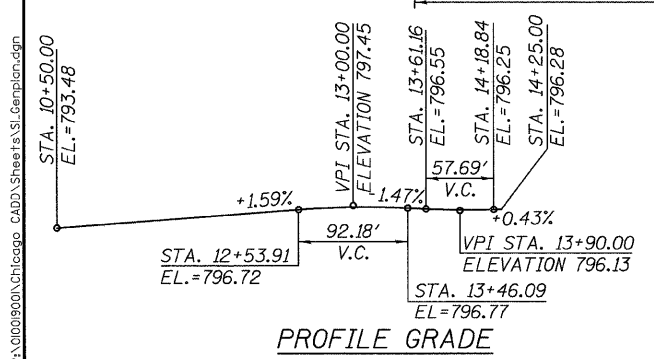
**CONSTRUCTION CLEARANCES**

- TEMPORARY VERTICAL CLEARANCE DURING CONSTRUCTION SHALL BE MAINTAINED AT 21'-0" MINIMUM.
- TEMPORARY HORIZONTAL CLEARANCE MEASURED FROM THE CENTERLINE OF TRACK SHALL BE MAINTAINED AT 8'-6" MINIMUM DURING CONSTRUCTION.

**BENCH MARK**  
USGS BENCHMARK ON TOP OF OLD RAILROAD BRIDGE (BRIDGE NO LONGER EXISTS) ABUTMENT, EAST OF CN-ICRR TRACKS, NORTH CORNER. (ELEVATION = 796.611)



**GENERAL PLAN**  
SCALE: 1" = 10'



**PROFILE GRADE**

**TOP OF RAIL ELEVATIONS ILLINOIS CENTRAL RAILROAD EAST TRACK (12/2007 SURVEY)**

STA. 22+78.87 EL. = 771.67	STA. 23+29.05 EL. = 771.79	STA. 23+79.06 EL. = 771.87	STA. 24+29.06 EL. = 771.78	STA. 24+79.07 EL. = 771.74
-------------------------------	-------------------------------	-------------------------------	-------------------------------	-------------------------------

**TOP OF RAIL ELEVATIONS ILLINOIS CENTRAL RAILROAD WEST TRACK (12/2007 SURVEY)**

STA. 22+79.17 EL. = 771.65	STA. 23+28.75 EL. = 771.94	STA. 23+79.16 EL. = 772.15	STA. 24+29.17 EL. = 772.09	STA. 24+79.19 EL. = 772.07
-------------------------------	-------------------------------	-------------------------------	-------------------------------	-------------------------------

1/12/2009 10:21:45 AM P:\01001900\Chicago\_CADD\Sheets\151\_Cempton.dgn