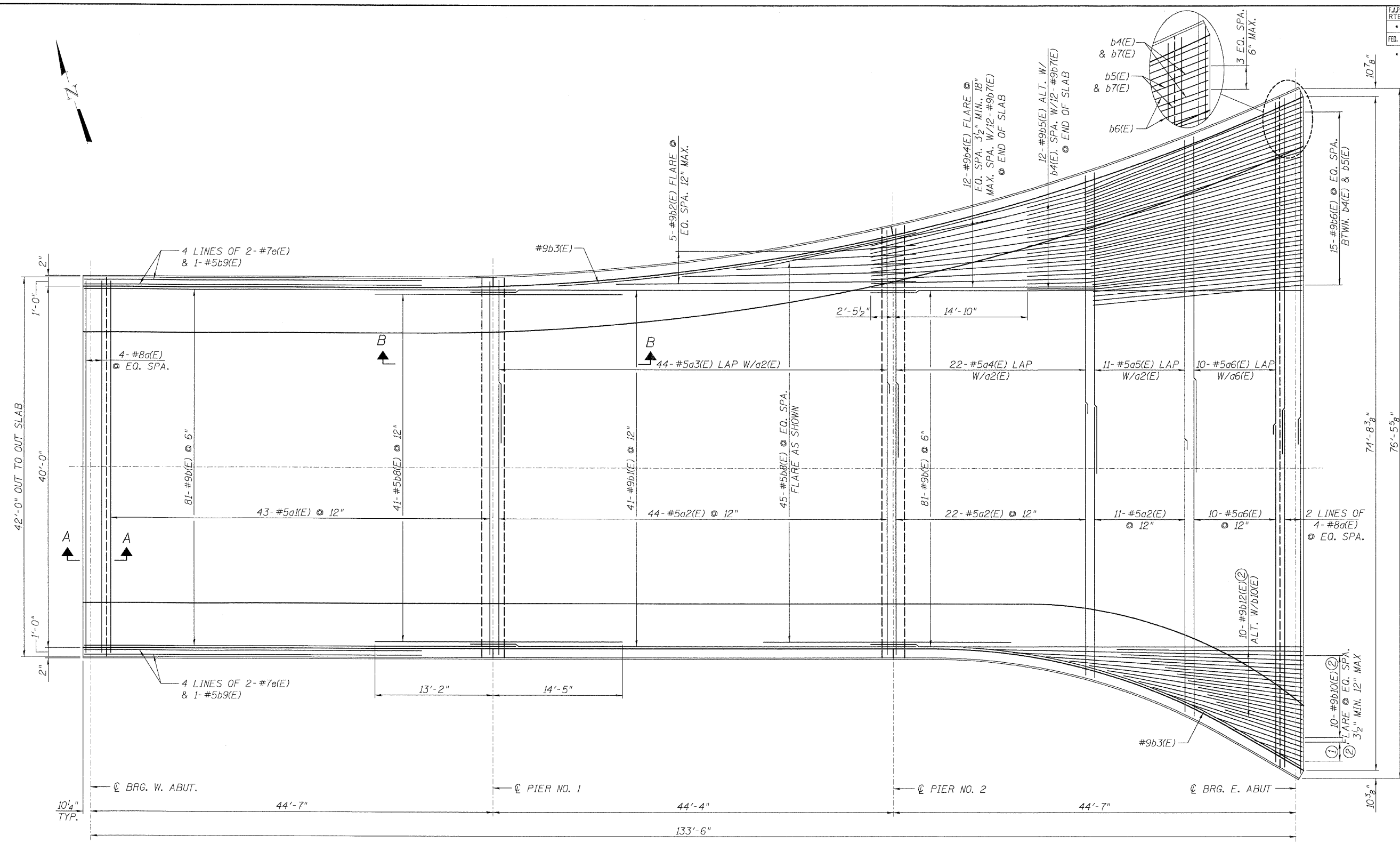


6/30/2008 2:00:19 PM

P:\01001500\Chicago - CADD\Sheet\355_deck.dwg

F.P. RTE.	SECTION	COUNTY	TOTAL SHEETS	SHEET NO.
00-00043-00-BR		FORD	51	38
FED. ROAD DIST. NO. 3	ILLINOIS	CONTRACT NO. 87198		

HOLMES ST.
PINE ST.
CENTER ST.



PLAN

MINIMUM LAP:
 #4 BAR = 1'-11"
 #5 BAR = 2'-5"
 #7 BAR = 2'-9"
 #8 BAR = 5'-1"
 #9 BAR = 4'-11"

NOTES:
 TOP SLAB AND SIDEWALK REINFORCEMENT SHOWN ON SHEET S-6.
 FOR SECTION A-A AND B-B, SEE SHEET S-8.
 DECK DIMENSIONS ARE BASED ON 1 3/4" JOINT OPENING @ 50°.

THE CONTRACTOR SHALL MAKE ALLOWANCE FOR THE DEFLECTION OF FORMS, SHRINKAGE AND SETTLEMENT OF FALSEWORK, IN ADDITION TO ALLOWANCE FOR DEAD LOAD DEFLECTION. FORMS FOR DECK SLAB SHALL BE REMOVED PRIOR TO PLACEMENT OF BRIDGE APPROACH PAVEMENT.
 ① 5-#9b11(E) @ 6"
 ② FIELD CUT AS REQ'D & REPAIR EPOXY COATING.



DATE	REVISIONS

**SUPERSTRUCTURE
BOTTOM REINFORCEMENT**

HOLMES STREET OVER
ILLINOIS CENTRAL RAILROAD
CITY OF PAXTON, FORD COUNTY

DESIGN BY DRS	DRAWING NO. S-5	JOB# C-93-016-01
DRAWN BY DJR		DATE 7/1/08
CHECKED BY BAP		SCALE AS SHOWN