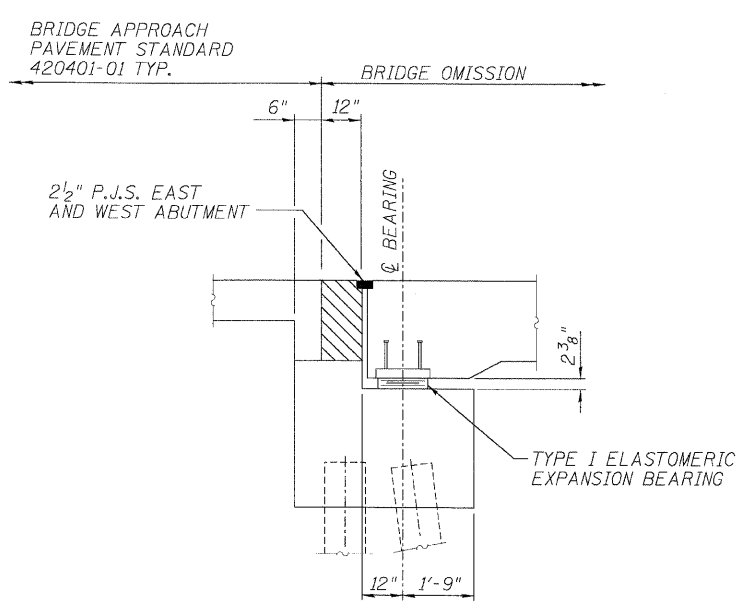


6/30/2008 1:59:41 PM

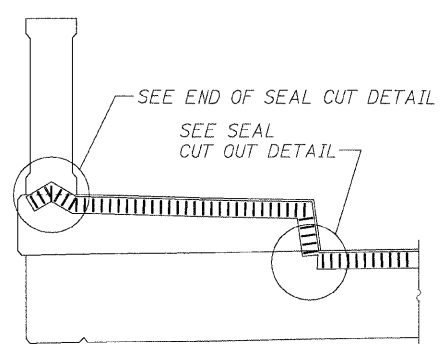
FAR. RTE.	SECTION	COUNTY	TOTAL SHEETS	SHEET NO.
• 00-00043-00-BR		FORD	51	44
FED. ROAD DIST. NO. 3	ILLINOIS	CONTRACT NO. 87198		



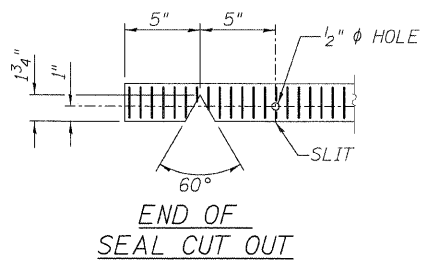
SECTION THROUGH ABUTMENTS

BILL OF MATERIAL

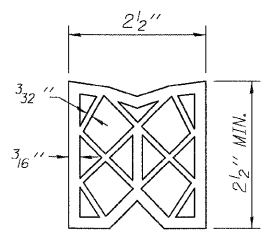
ITEM	UNIT	TOTAL
PREFORMED JOINT SEAL 2 1/2"	FOOT	122
ELASTOMERIC BEARING ASSEMBLY, TYPE 1	EACH	11



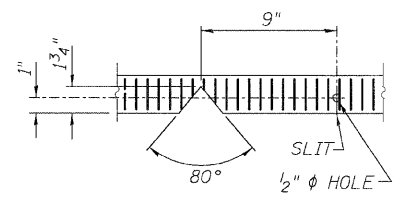
END TREATMENT



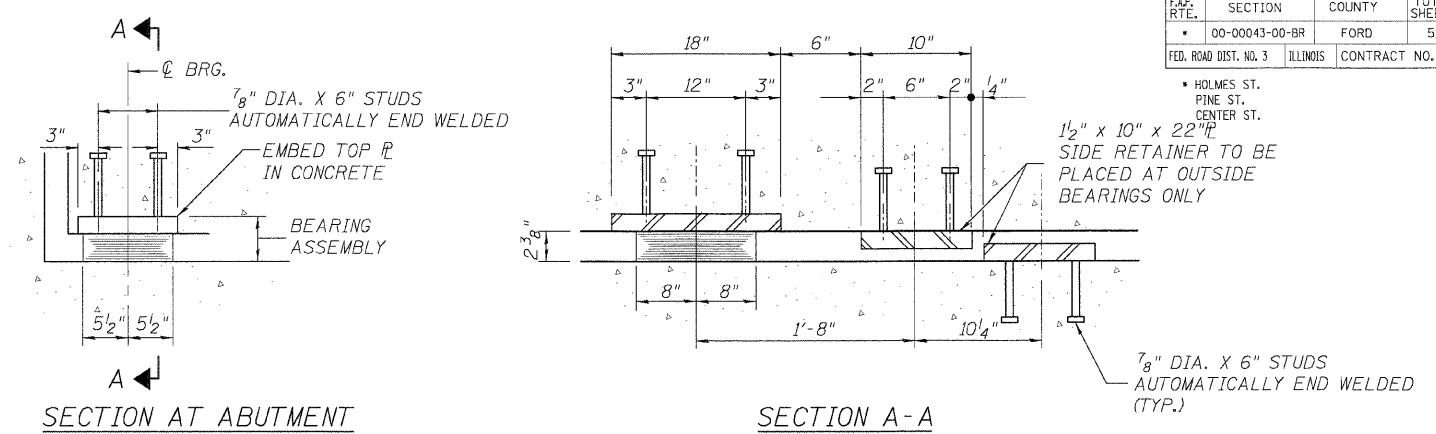
END OF SEAL CUT OUT



PREFORMED JOINT SEAL (2 1/2'')



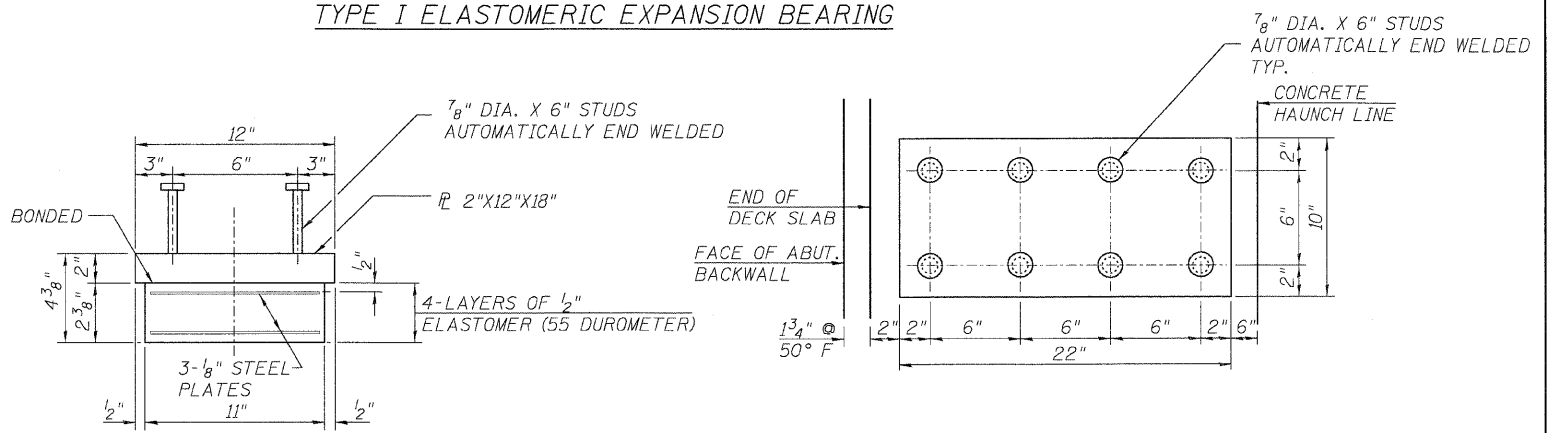
SEAL CUT OUT AT CURB



SECTION AT ABUTMENT

SECTION A-A

TYPE I ELASTOMERIC EXPANSION BEARING



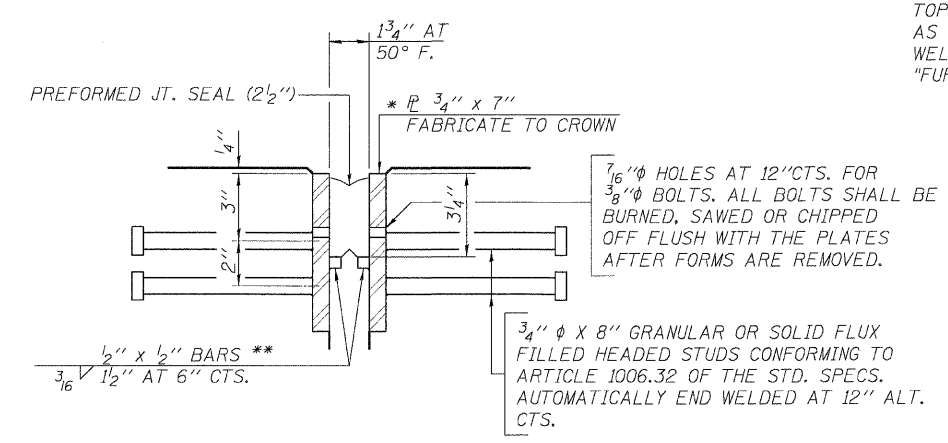
BEARING ASSEMBLY

SIDE RETAINER PLATE

SHIM PLATES SHALL NOT BE PLACED UNDER BEARING ASSEMBLY.

TYPICAL TOP AND BOTTOM (TOTAL = 8 PLATES)

- NOTES:
1. THE COST OF THE TOP PLATE OF THE ELASTOMERIC BEARING ASSEMBLY SHALL BE INCLUDED IN "ELASTOMERIC BEARING ASSEMBLY, TYPE 1".
 2. THE COST OF THE SHEAR STUDS WELDED TO THE TOP PLATE OF THE BEARING ASSEMBLY, AS WELL AS THE SIDE RETAINER PLATES AND THE STUDS WELDED TO THEM SHALL BE INCLUDED IN "FURNISH AND ERECT STRUCTURAL STEEL".



EXPANSION JOINT DETAIL

- * FURNISH IN SEGMENTS OF 20 FT. MAXIMUM LENGTH. MAXIMUM SPACE BETWEEN INSTALLED SEGMENTS SHALL BE 3/16". SEAL SPACE WITH SILICONE SEALANT SUITABLE FOR STRUCTURAL STEEL.
- ** CUT RETAINER BARS IN SIDEWALK OR MEDIAN 6" SHORT OF THE SIDEWALK OR MEDIAN FACE. AFTER FABRICATION ALL SURFACES OF THE STEEL PLATES SHALL BE GIVEN ONE SHOP COAT OF PAINT SPECIFIED FOR STRUCTURAL STEEL.

EXPANSION JOINT AND BEARING DETAILS
HOLMES STREET OVER
ILLINOIS CENTRAL RAILROAD
CITY OF PAXTON, FORD COUNTY

DESIGN BY DPS	DRAWING NO. S-11	Job# C-93-016-01
DRAWN BY DJR	DATE 7/1/08	SCALE AS SHOWN
CHECKED BY BAP		

Edwards and Kelcey

DATE	REVISIONS

P:\00095001\Chicopee CAD\Sheet+R&S\El.Exp+Br.dgn