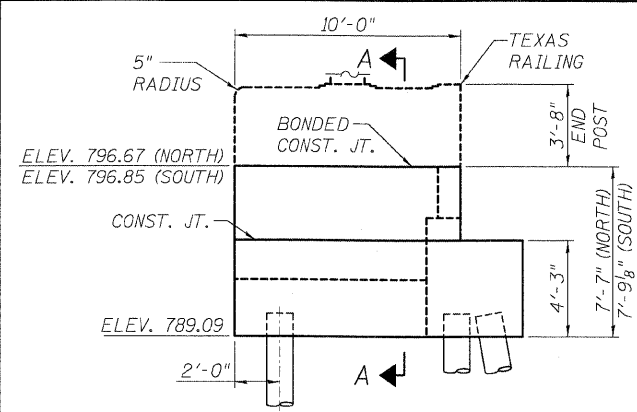
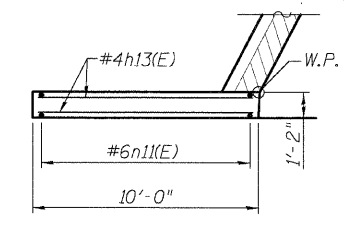


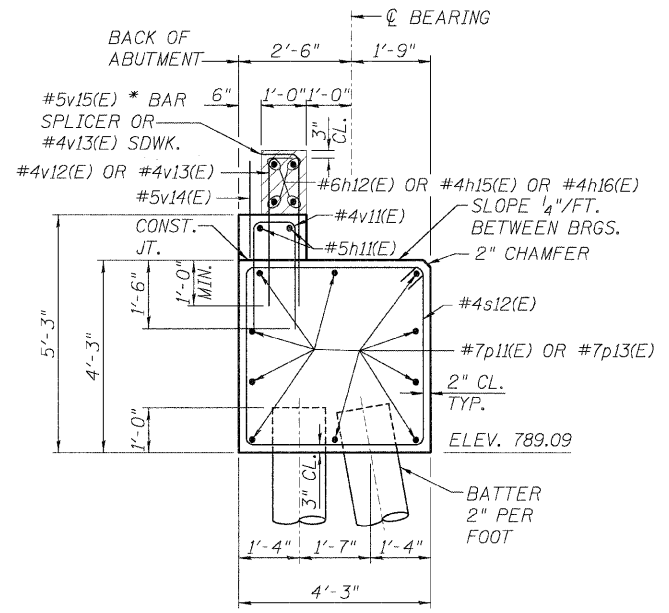
HOLMES ST.  
PINE ST.  
CENTER ST.



**WINGWALL ELEVATION**  
(NORTH WINGWALL SHOWN)



**SECTION B-B**

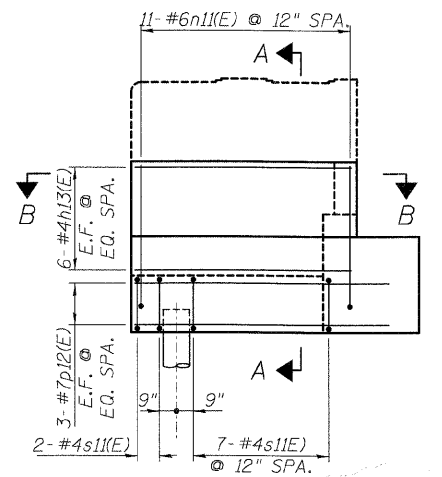


**ABUTMENT SECTION**

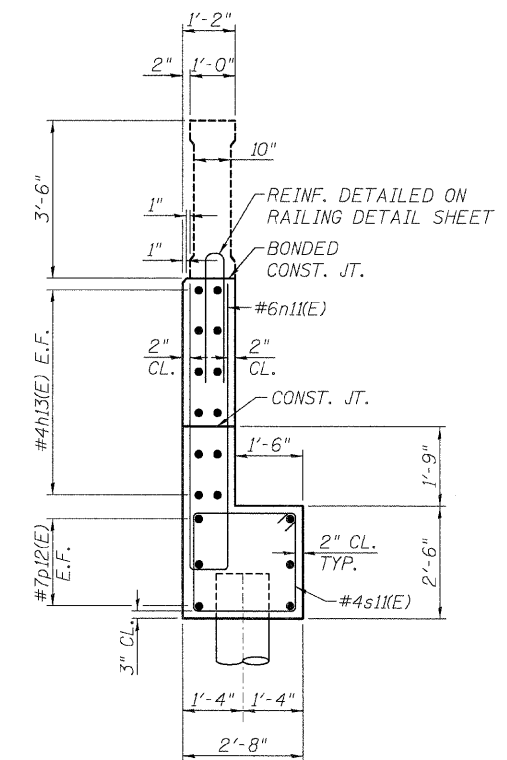
\* ALIGN PARALLEL TO APPROACH  
SLAB REINFORCEMENT

**EAST ABUTMENT  
BILL OF MATERIAL**

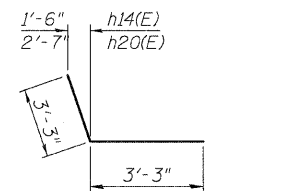
Bar	No.	Size	Length	Shape
h11(E)	4	#5	39'-3"	—
h12(E)	8	#6	39'-0"	—
h13(E)	24	#4	9'-8"	—
h14(E)	4	#5	6'-6"	—
h15(E)	2	#4	5'-2"	—
h16(E)	2	#4	6'-9"	—
h20(E)	4	#5	6'-6"	—
n11(E)	22	#6	13'-4"	—
p11(E)	10	#7	30'-0"	—
p12(E)	12	#7	11'-5"	—
p13(E)	10	#7	52'-9"	—
s11(E)	18	#4	9'-7"	—
s12(E)	62	#4	16'-3"	—
v11(E)	76	#4	5'-10"	—
v12(E)	64	#4	4'-5"	—
v13(E)	26	#4	4'-11"	—
v14(E)	64	#5	2'-2"	—
v15(E)	63	#5	4'-6"	—
u11(E)	8	#6	9'-11"	—
STRUCTURE EXCAVATION	CU. YD.		194	
CONCRETE STRUCTURES	CU. YD.		64	
REINFORCEMENT BARS, EPOXY COATED	POUND		5188	
FURNISHING METAL SHELL PILES 14"	FOOT		990	
TEST PILE MET. SHELLS	EACH		1	
DRIV. & FILLING SHELLS	FOOT		990	
CONCRETE SEALER	SQ. FT.		301	



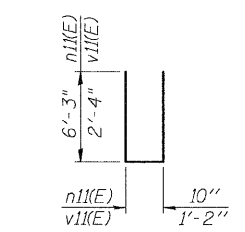
**WINGWALL REINFORCEMENT**



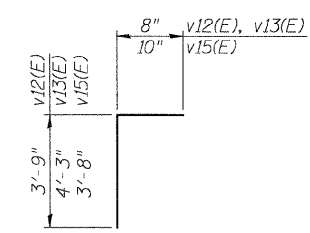
**SECTION A-A**



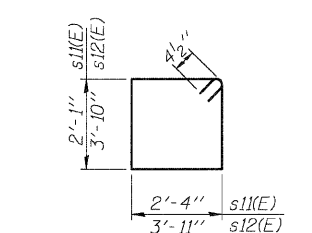
**BARS h14(E), h20(E)**



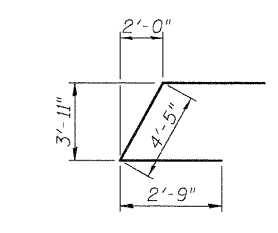
**BARS n11(E), v11(E)**



**BAR v12(E),  
v13(E), v15(E)**



**BARS s11(E), s12(E)**



**BAR u11(E)**

**PILE DATA**

TYPE: 14"φ METAL SHELL CONCRETE PILES  
CAPACITY: 50 TONS  
ESTIMATED LENGTH: 45 FEET  
NUMBER REQUIRED: 22 + 1 TEST PILES

**EAST ABUTMENT DETAILS**

HOLMES STREET OVER  
ILLINOIS CENTRAL RAILROAD  
CITY OF PAXTON, FORD COUNTY

DESIGN BY DRS	DRAWING NO. S-15	Job# C-93-016-01
DRAWN BY DJR		DATE 7/1/08
CHECKED BY BAP		SCALE AS SHOWN

<b>Edwards and Kelcey</b>	DATE	REVISIONS

6/20/2008 4:58:50 PM P:\00000000\Chicago\_CADD\Sheets\SS\_abut.dgn