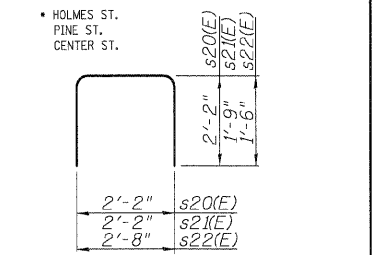


6/30/2008 1:59:53 PM
 P:\000000\Chiccoo_CADD_Sheets\ST_Pier2.dgn

FAP. RTE.	SECTION	COUNTY	TOTAL SHEETS	SHEET NO.
• 00-00043-00-BR	FORD	ILLINOIS	51	50
FED. ROAD DIST. NO. 3			CONTRACT NO. 87198	

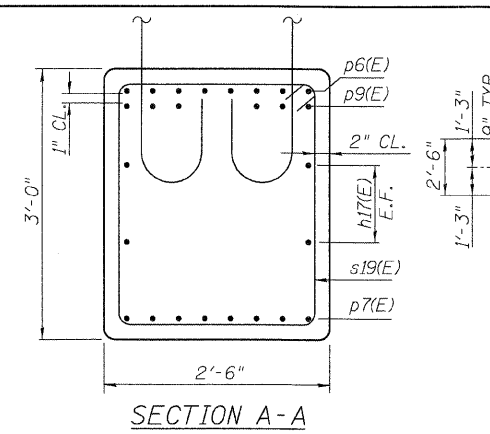


PILE DATA

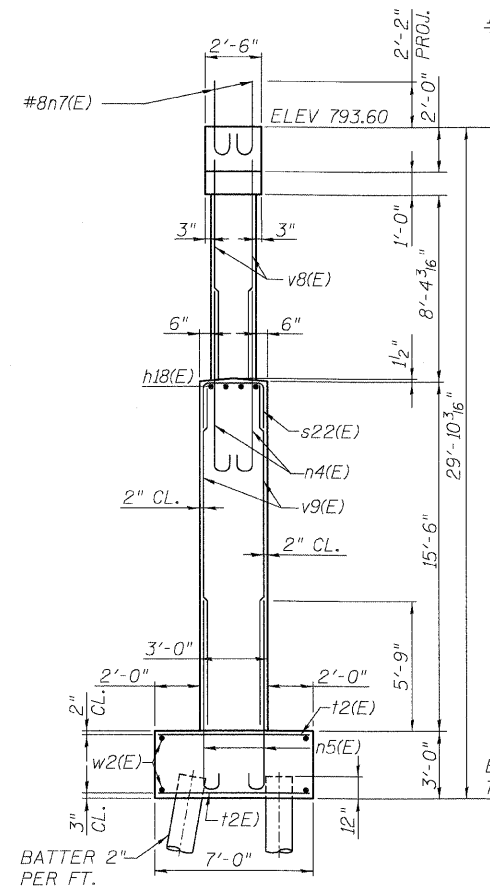
TYPE: 14" ϕ METAL SHELL CONCRETE PILES
 CAPACITY 50 TONS
 ESTIMATED LENGTH 45 FEET
 NUMBER REQUIRED 21 + 1 TEST PILES

**PIER 2
 BILL OF MATERIAL**

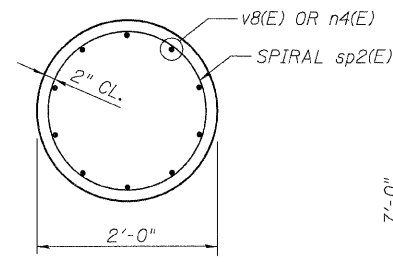
Bar	No.	Size	Length	Shape
h17(E)	4	#5	48'-2"	—
h18(E)	4	#9	38'-2"	—
h19(E)	30	#5	38'-2"	—
n4(E)	40	#8	8'-1"	U
n5(E)	158	#9	9'-9"	U
n7(E)	48	#8	4'-4"	U
p6(E)	8	#8	51'-6"	—
p7(E)	8	#7	37'-6"	—
p8(E)	16	#6	8'-0"	—
p9(E)	12	#6	13'-0"	—
s19(E)	36	#5	10'-7"	—
s20(E)	16	#5	6'-6"	—
s21(E)	12	#5	5'-8"	—
s22(E)	77	#5	5'-8"	—
sp2(E)	4	#4	215'-0"	
t2(E)	88	#6	6'-8"	—
u4(E)	6	#6	9'-3"	U
u5(E)	32	#5	8'-6"	U
v8(E)	40	#8	10'-6"	—
v9(E)	158	#9	15'-3"	—
w2(E)	16	#5	42'-8"	—
STRUCTURE EXCAVATION		CU. YD.	87	
CONCRETE STRUCTURES		CU. YD.	117	
REINFORCEMENT BARS,		POUND	23587	
EPOXY COATED				
FURNISHING METAL SHELL PILES 14"		FOOT	945	
TEST PILE MET.SHELLS		EACH	1	
DRIV. & FILLING SHELLS		FOOT	945	



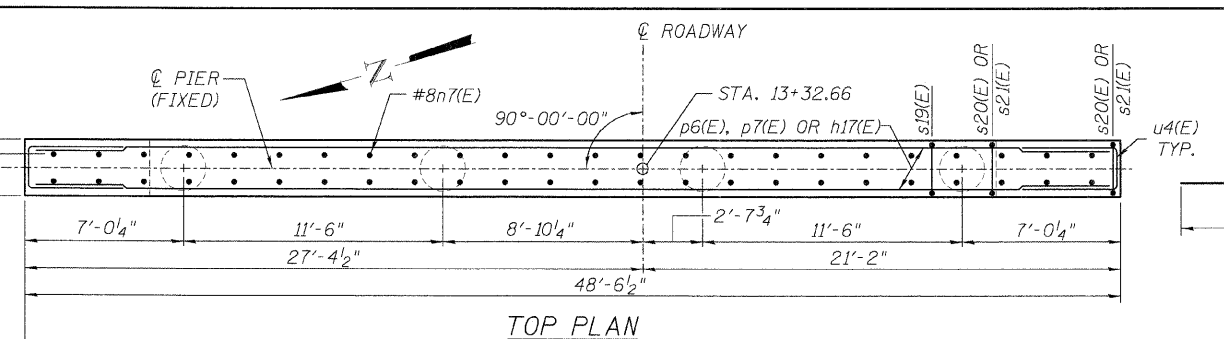
SECTION A-A



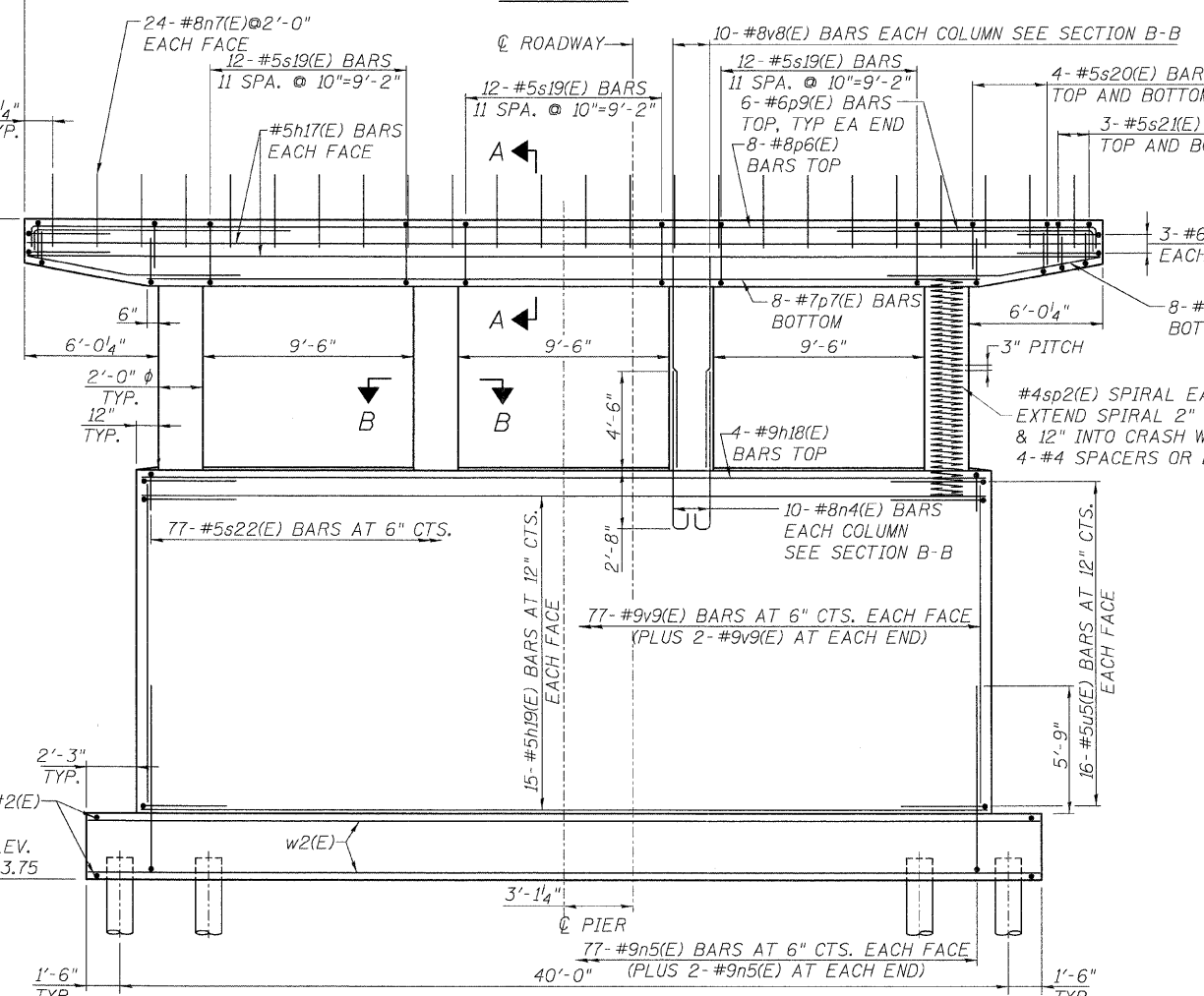
END VIEW



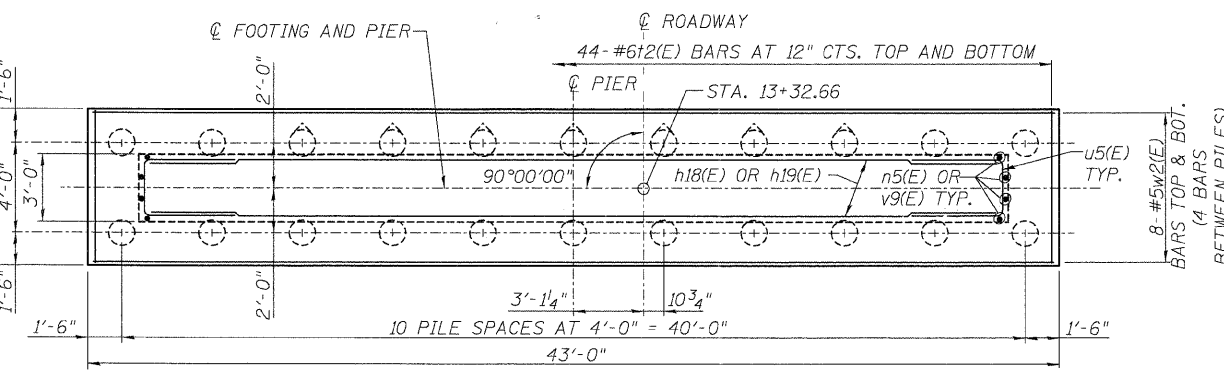
SECTION B-B



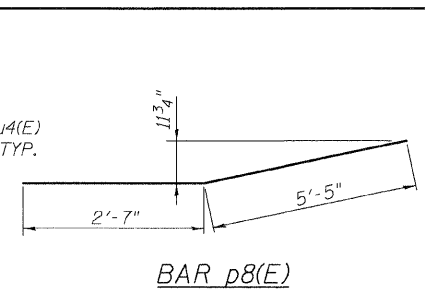
TOP PLAN



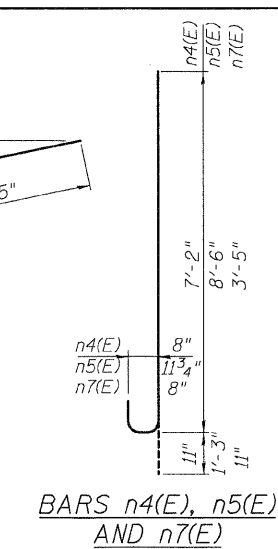
**ELEVATION
 (LOOKING EAST)**



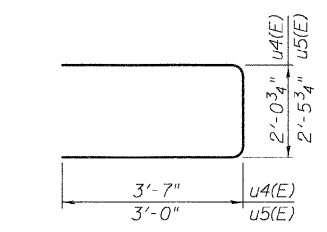
FOOTING PLAN



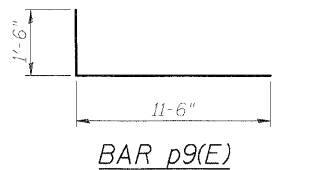
BAR p8(E)



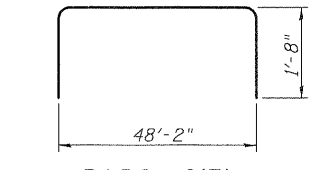
**BARS n4(E), n5(E)
 AND n7(E)**



BARS u4(E) AND u5(E)



BAR p9(E)



BARS p6(E)

- NOTES:**
- REINFORCEMENT BARS DESIGNATED (E) SHALL BE EPOXY COATED.
 - ALL EDGES SHALL HAVE STANDARD 3/4" CHAMFER.
 - FOR PILE REINFORCEMENT DETAILS, SEE METAL SHELL REINFORCEMENT DETAIL SHEET S-13.
 - CONTRACTOR SHALL DRIVE ALL PILES IN THE ROW CLOSEST TO THE TRACK BEFORE OTHER PIER PILES.

**Edwards
 AND Kelcey**

DATE REVISIONS

PIER 2
 HOLMES STREET OVER
 ILLINOIS CENTRAL RAILROAD
 CITY OF PAXTON, FORD COUNTY

DESIGN BY BAP	DRAWING NO. S-17	Job# C-93-016-01
DRAWN BY DJR		DATE 7/1/08
CHECKED BY DRS		SCALE AS SHOWN