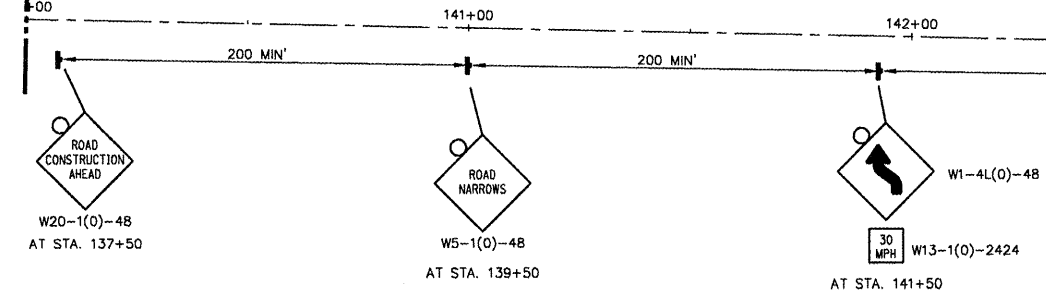
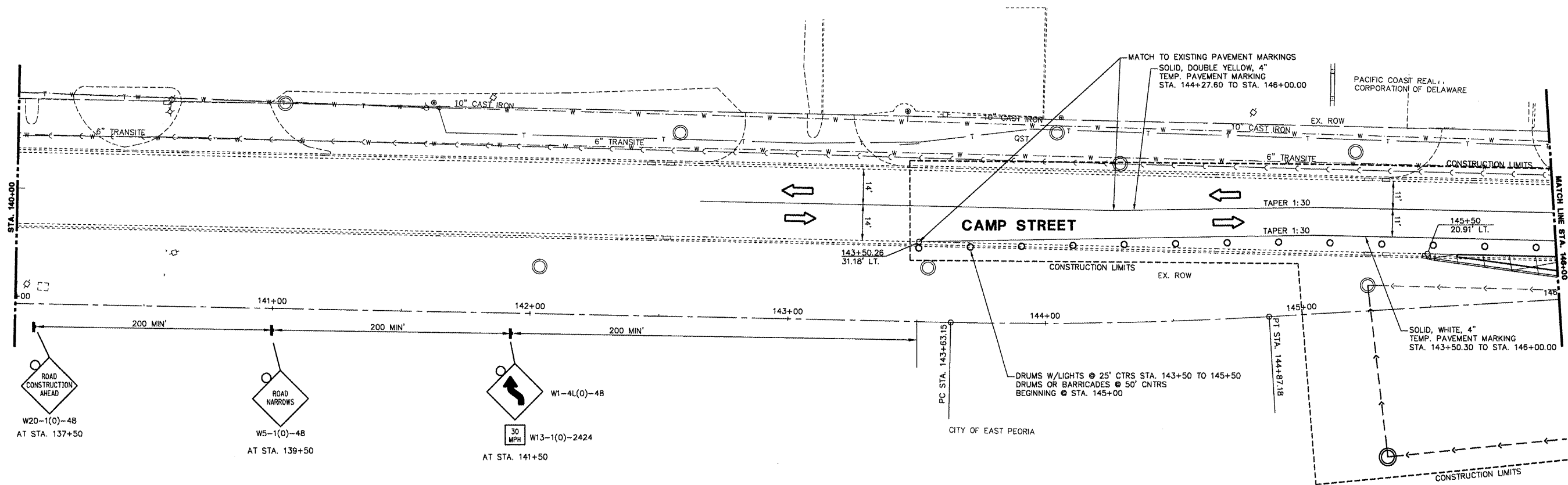
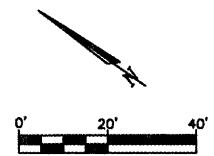
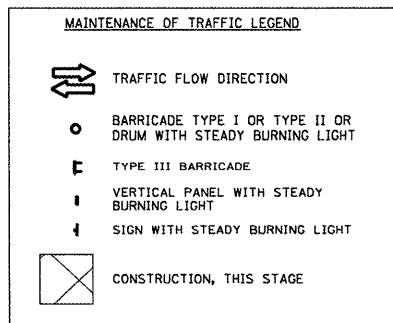


F.A.U. RTE.	SECTION	COUNTY	TOTAL SHEETS	SHEET NO.
6713	05-00148-00-PV	TAZEWELL	74	19
STA. 145+50.00		TO STA. 156+60.00		
FED. ROAD DIST. NO. 4		ILLINOIS FED. AID PROJECT		



- NOTES:**
1. ADD "FLAGGER" SIGNS AS REQUIRED, INCLUDED IN TRAFFIC CONTROL AND PROTECTION, L. SUM
  2. TEMPORARY TRAFFIC CONTROL SIGNS SHALL BE FURNISHED AND PLACED AS SHOWN OR AS DIRECTED BY THE ENGINEER.
  3. SEE REMOVAL PLANS FOR ALL ITEMS TO BE REMOVED.
  4. ACCESS TO DRIVEWAYS AND ENTRANCES TO BE MAINTAINED AT ALL TIMES.
  5. SEE PLAN AND PROFILE SHEETS AND COMMITMENTS FOR EXISTING FACILITIES TO BE MAINTAINED.
  6. REMOVE EXISTING PAVEMENT MARKINGS IN CONFLICT; SEE SCHEDULE OF QUANTITIES FOR ADDITIONAL INFORMATION.
  7. ALL TEMPORARY PAVEMENT MARKINGS INCLUDING EDGE LINES, CENTER LINES, LANE LINES, TAPERS, MEDIAN DIAGONALS, STOP BARS, LETTERS & SYMBOLS, AND ANY OTHER TEMPORARY MARKINGS AS REQUIRED BY THE ENGINEER, AND THEIR REMOVAL SHALL BE INCLUDED IN THE COST OF TRAFFIC CONTROL AND PROTECTION. THIS WORK SHALL BE PERFORMED ACCORDING TO SECTIONS 701 AND 703 OF THE STANDARD SPECIFICATIONS AND AS DIRECTED BY THE ENGINEER. STANDARD 701602 SHALL NOT BE PAID FOR SEPARATELY BUT SHALL BE INCLUDED IN THE COST OF TRAFFIC CONTROL AND PROTECTION.

- TRAFFIC CONTROL HIGHWAY STANDARDS**
- 701101
  - 701106
  - 701301
  - 701802
  - 701901



REVISIONS	
NAME	DATE

ILLINOIS DEPARTMENT OF TRANSPORTATION  
**CAMP STREET CONNECTOR**  
**MAINTENANCE OF TRAFFIC**  
**STAGE 1**  
**STA. 140+00 TO STA. 146+00**

SCALE: VERT. 1" = 20'  
 HORIZ. 1" = 20'  
 DATE 12/22/2008

DRAWN BY JLT  
 CHECKED BY CSA

ILLINOIS DEPARTMENT OF TRANSPORTATION