

F.A.U. RTE.	SECTION	COUNTY	TOTAL SHEETS	SHEET NO.
6713	05-00148-00-PV	TAZEWELL	74	25
STA. 145+50.00		TO STA. 156+60.00		
FED. ROAD DIST. NO. 4		ILLINOIS FED. AID PROJECT		

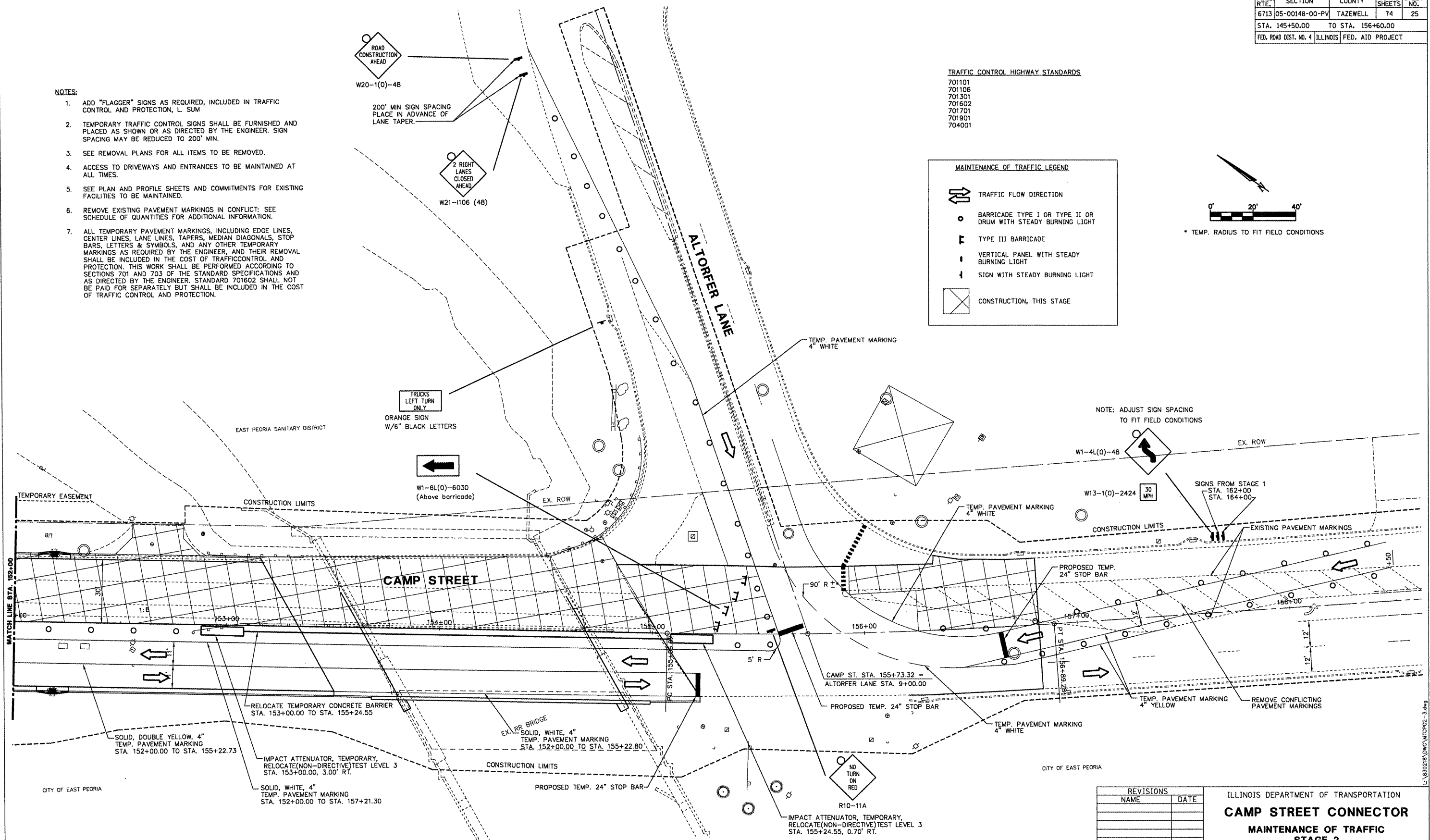
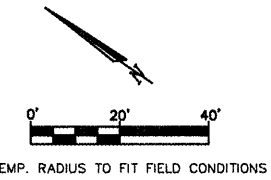
- NOTES:**
1. ADD "FLAGGER" SIGNS AS REQUIRED, INCLUDED IN TRAFFIC CONTROL AND PROTECTION, L. SUM
 2. TEMPORARY TRAFFIC CONTROL SIGNS SHALL BE FURNISHED AND PLACED AS SHOWN OR AS DIRECTED BY THE ENGINEER. SIGN SPACING MAY BE REDUCED TO 200' MIN.
 3. SEE REMOVAL PLANS FOR ALL ITEMS TO BE REMOVED.
 4. ACCESS TO DRIVEWAYS AND ENTRANCES TO BE MAINTAINED AT ALL TIMES.
 5. SEE PLAN AND PROFILE SHEETS AND COMMITMENTS FOR EXISTING FACILITIES TO BE MAINTAINED.
 6. REMOVE EXISTING PAVEMENT MARKINGS IN CONFLICT; SEE SCHEDULE OF QUANTITIES FOR ADDITIONAL INFORMATION.
 7. ALL TEMPORARY PAVEMENT MARKINGS, INCLUDING EDGE LINES, CENTER LINES, LANE LINES, TAPERS, MEDIAN DIAGONALS, STOP BARS, LETTERS & SYMBOLS, AND ANY OTHER TEMPORARY MARKINGS AS REQUIRED BY THE ENGINEER, AND THEIR REMOVAL SHALL BE INCLUDED IN THE COST OF TRAFFIC CONTROL AND PROTECTION. THIS WORK SHALL BE PERFORMED ACCORDING TO SECTIONS 701 AND 703 OF THE STANDARD SPECIFICATIONS AND AS DIRECTED BY THE ENGINEER. STANDARD 701602 SHALL NOT BE PAID FOR SEPARATELY BUT SHALL BE INCLUDED IN THE COST OF TRAFFIC CONTROL AND PROTECTION.

TRAFFIC CONTROL HIGHWAY STANDARDS

- 701101
- 701106
- 701301
- 701602
- 701701
- 701901
- 704001

MAINTENANCE OF TRAFFIC LEGEND

- TRAFFIC FLOW DIRECTION
- BARRICADE TYPE I OR TYPE II OR DRUM WITH STEADY BURNING LIGHT
- TYPE III BARRICADE
- VERTICAL PANEL WITH STEADY BURNING LIGHT
- SIGN WITH STEADY BURNING LIGHT
- CONSTRUCTION, THIS STAGE



REVISIONS	
NAME	DATE

ILLINOIS DEPARTMENT OF TRANSPORTATION
CAMP STREET CONNECTOR
MAINTENANCE OF TRAFFIC
STAGE 2
STA. 152+00 TO STA. 158+00

SCALE: VERT. 1" = 20'
 HORIZ. 1" = 20'
 DATE 12/22/2008

DRAWN BY JLT
 CHECKED BY CSA