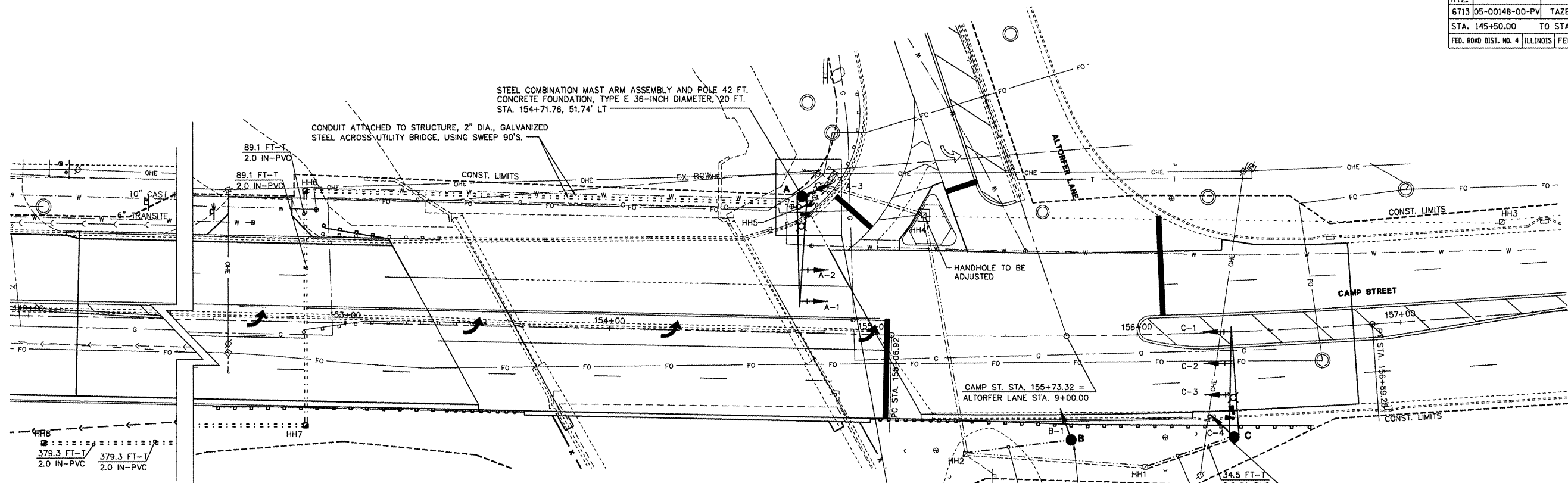


F.A.U. RTE.	SECTION	COUNTY	TOTAL SHEETS	SHEET NO.
6713	05-00148-00-PV	TAZEWELL	74	39
STA. 145+50.00		TO STA. 156+60.00		
FED. ROAD DIST. NO. 4 ILLINOIS FED. AID PROJECT				



TRAFFIC SIGNAL NOTES

- ALL TRAFFIC SIGNALS SHALL BE 12" LED SECTIONS.
- THE RED SECTIONS OF THE SIGNAL HEADS SHARING THE SAME MAST ARM SHALL BE LEVEL WITH ONE ANOTHER AND MAINTAIN A 18.0 FEET MINIMUM CLEARANCE OVER THE ROADWAY.
- THE PROPOSED MAST ARM MOUNTED TRAFFIC SIGNAL HEADS SHALL BE MOUNTED DIRECTLY OVER THE CENTER OF THEIR RESPECTIVE LANES.
- ALL TRAFFIC SIGNAL POSTS ARE TO BE GALVANIZED STEEL.
- ALL BRACKET MOUNTS AND ASSOCIATED PIPES ARE TO BE UNPAINTED ALUMINUM, SCHEDULE 80.
- PROPOSED HANDHOLES SHALL BE CAST-IN-PLACE CONCRETE HANDHOLES. THIS WORK SHALL BE PAID FOR AS HANDHOLES.
- THE HANDHOLE SHALL BE CONSTRUCTED SO THAT THE TOP OF THE FRAME WILL BE FLUSH WITH THE SURFACE OF THE MEDIAN OR GROUND LINE.
- THE LOCATION OF ALL UTILITIES SHALL BE FIELD VERIFIED BY THE CONTRACTOR BEFORE THE INSTALLATION OF ANY TRAFFIC SIGNAL COMPONENTS.
- COILABLE POLYETHYLENE DUCT MAY BE SUBSTITUTED FOR PVC CONDUIT PUSHED OR TRENCHED.
- THE LOCATIONS FOR HANDHOLES AND MAST ARM FOUNDATIONS ARE PROVIDED FOR REFERENCE ONLY. THE ENGINEER OF TRAFFIC SHALL BE NOTIFIED FOR LOCATION VERIFICATION BEFORE INSTALLATION.
- HIGHWAY LIGHTING ELECTRIC CABLE IN CONDUIT SHALL BE 2-1/C #6 XLP/USE AND 1-1/C #6 XLP/USE GREEN INSULATION (FOR GROUND) (STD. 1066.02).
- ALL SIGNAL BASES SHALL BE LOCATED A MINIMUM OF 6.0 FEET FROM THE FACE OF CURB, UNLESS OTHERWISE DIRECTED BY THE ENGINEER.
- NO ADDITIONAL COMPENSATION SHALL BE ALLOWED FOR PLACING CONDUIT AT GREATER THAN 2.0 FEET MINIMUM DEPTH TO AVOID OBSTACLES SUCH AS UNDERGROUND UTILITIES.
- THE CONTRACTOR IS RESPONSIBLE FOR THE COST OF UNCOVERING OR HAND DIGGING AROUND UTILITIES AS NECESSARY, INCIDENTAL TO THE CONDUIT PAY ITEM.
- ALL MAST ARM POLES BASES SHALL BE PROTECTED BY A STAINLESS STEEL MESH SCREENING AROUND THE BASE BOLTS TO PREVENT RODENT ENTRY. THE MESH SHALL BE SECURED TO THE BASE BY STAINLESS STEEL BANDING. THE COST SHALL BE INCLUDED IN THE PAY ITEM "STEEL COMBINATION MAST ARM ASSEMBLY AND POLE".
- THE CONTRACTOR MAY ELECT TO PUSH CONDUIT SHOWN AS TRENCHED. THERE WILL BE NO ADDITIONAL COMPENSATION. THE CONDUIT WILL BE PAID FOR AS "CONDUIT IN TRENCH" AND "TRENCH AND BACKFILL FOR ELECTRICAL WORK".
- ALL TRAFFIC SIGNAL MAST ARMS, POSTS, HANDHOLE LIDS AND FRAMES, AND PEDESTRIAN PUSHBUTTON POSTS SHALL BE GROUNDED WITH 1/C #6 CABLE IN ACCORDANCE WITH NEC REQUIREMENTS. THIS WORK SHALL BE INCIDENTAL TO THE CORRESPONDING PAY ITEM.
- THE MAST ARMS SHALL CONFORM TO THE STANDARD LOADING ON HIGHWAY STANDARD 877011, STEEL COMBINATION MAST ARM ASSEMBLY AND POLE, OR THE PROPOSED LOADING, WHICHEVER IS GREATER.
- CONDUIT ON POLES SHALL BE GALVANIZED STEEL.

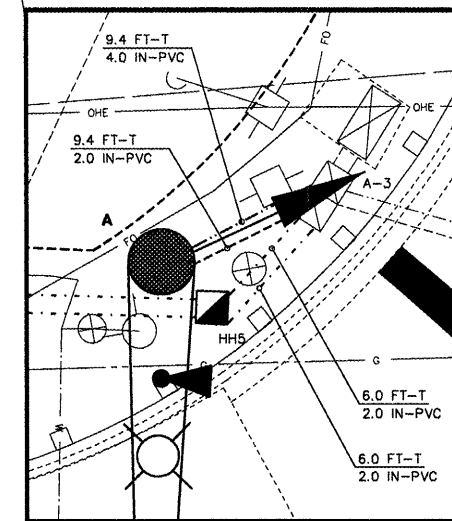
SCHEDULE OF HANDHOLES				
ITEM	STATION	OFFSET	DESCRIPTION	
HH1	156+01.93	50.29' RT	EXISTING, TO REMAIN	
HH2	155+35.44	44.90' RT	EXISTING, TO REMAIN	
HH3	157+41.77	34.91' LT	EXISTING, TO REMAIN	
HH4	155+18.44	45.76' LT	EXISTING, TO REMAIN	
HH5	154+74.67	49.22' LT		
HH6	152+83.84	49.64' LT		
HH7	152+85.91	39.40' RT		
HH8	149+06.75	48.16' RT		

SCHEDULE OF SIGNAL POLES				
ITEM	STATION	OFFSET	DESCRIPTION	
A	154+71.76	51.74' LT	STL COMB MAA&P 42	
B	155+74.61	39.34' RT	TS POST GALVS 15	
C	156+35.13	40.00' RT	STL COMB MAA&P 42	

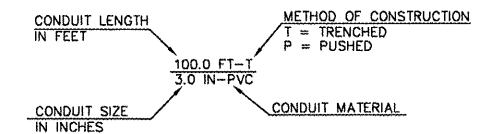
SCHEDULE OF SIGNAL HEADS				
ITEM	UNIT	LOCATION		QUANTITY
SH, 1F, 3S, MAM	EA	A-1, A-2, C-2, C-3		4
SH, 1F, 3S, BM	EA	B-1, C-4		2
SH, 1F, 5S, BM	EA	A-3		1
SH, 1F, 5S, MAM	EA	C-1		1
SIGNAL BACKPLATE	EA	A-1, A-2, C-2, C-3, C-1		5

PLAN VIEW

SCALE: 1"=20'



CONDUIT CODE



TRAFFIC SIGNAL LEGEND

- HH - HANDHOLE
- MAM - MAST ARM MOUNTED
- BM - BRACKET MOUNTED
- CONDUIT - TRAFFIC SIGNAL CONDUCTORS (PUSHED OR TRENCHED)
- CONDUIT - POWER SUPPLY LUMINAIRES (PUSHED OR TRENCHED)
- CONDUIT - INTERCONNECT CABLE (PUSHED OR TRENCHED)

REVISIONS	
NAME	DATE

ILLINOIS DEPARTMENT OF TRANSPORTATION
**CAMP STREET CONNECTOR
TRAFFIC SIGNAL
LAYOUT**

SCALE: VERT.
HORIZ.
DATE 12/22/2008

DRAWN BY JLT
CHECKED BY CSA

L:\89392\89392\DWG\SIGNAL-PLAN.dwg