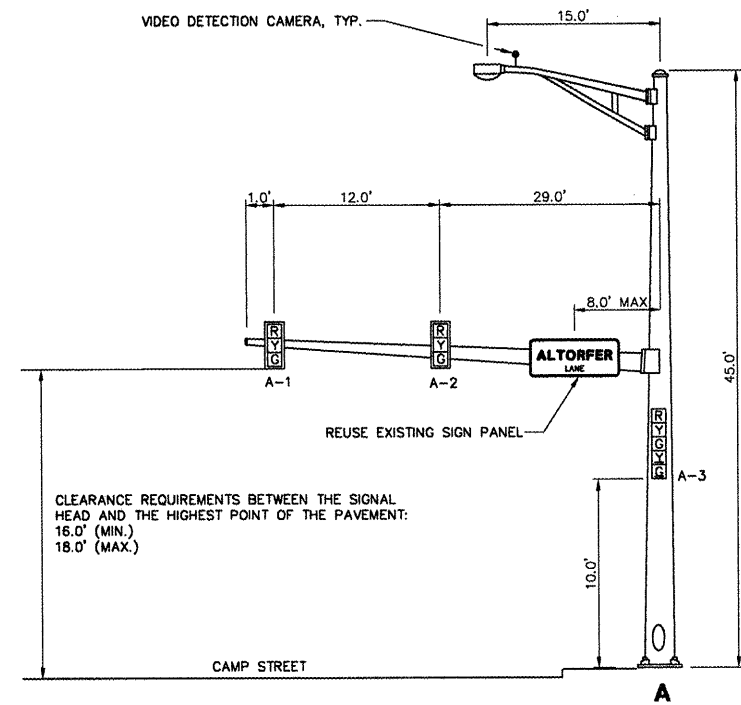
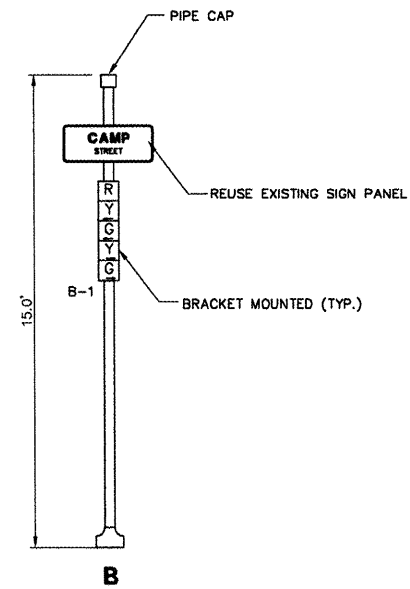


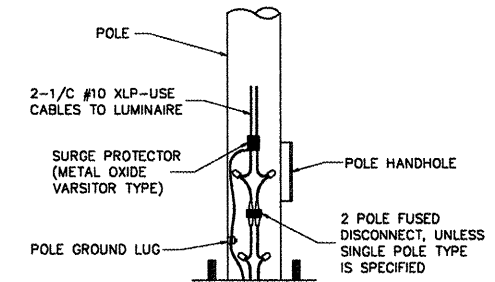
F.A.U. RTE.	SECTION	COUNTY	TOTAL SHEETS	SHEET NO.
6713	05-00148-00-PV	TAZEWELL	74	41
STA. 145+50.00		TO STA. 156+60.00		
FED. ROAD DIST. NO. 4 ILLINOIS FED. AID PROJECT				



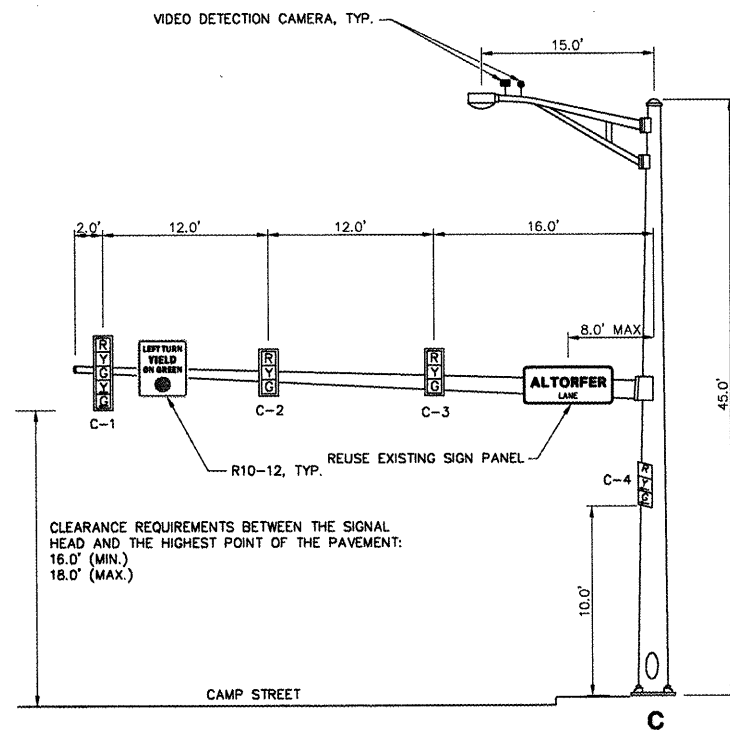
**WEST BOUND TRAFFIC SIGNAL  
NORTH CORNER OF CAMP STREET AND ALTORFER LANE**



**SOUTH BOUND TRAFFIC SIGNAL  
SOUTHWEST OF CAMP STREET AND ALTORFER LANE**



OVERHEAD LIGHTING ELECTRIC CABLE SHALL BE 2-1/2 #6 XLP/USE AND 1-1/2 #6 XLP/USE GREEN INSULATION (FOR GROUND) PER STANDARD 1056.02.



**EAST BOUND TRAFFIC SIGNAL  
SOUTHWEST OF CAMP STREET AND ALTORFER LANE**

REVISIONS	
NAME	DATE

ILLINOIS DEPARTMENT OF TRANSPORTATION  
**CAMP STREET CONNECTOR**  
TRAFFIC SIGNAL POST  
AND MAST ARM DETAILS

VERT. SCALE: 1"=10'  
HORIZ. SCALE: 1"=10'  
DATE 12/22/2008

DRAWN BY JLT  
CHECKED BY CSA

I:\V80218\01\01\SIGNAL-MASTARM.dwg