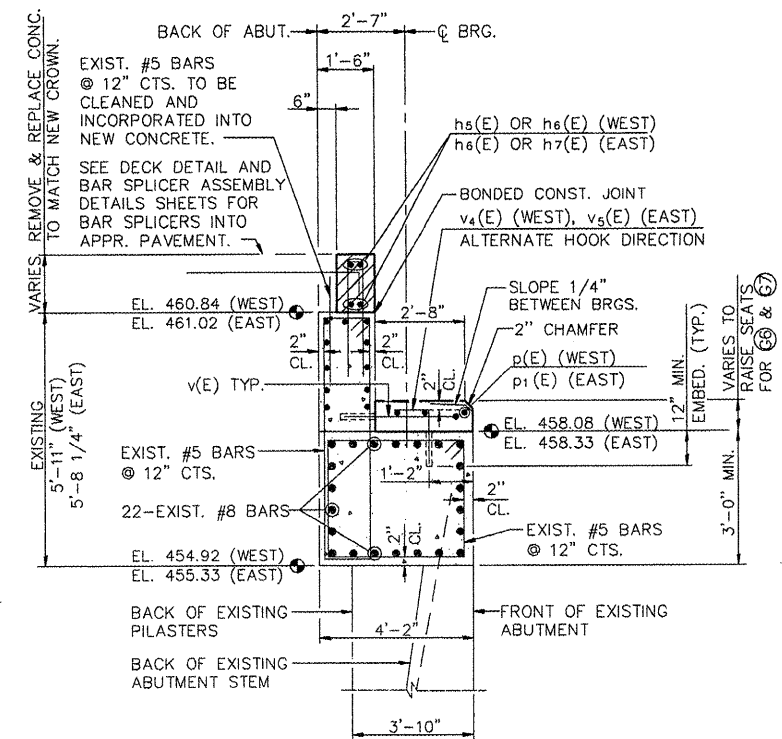
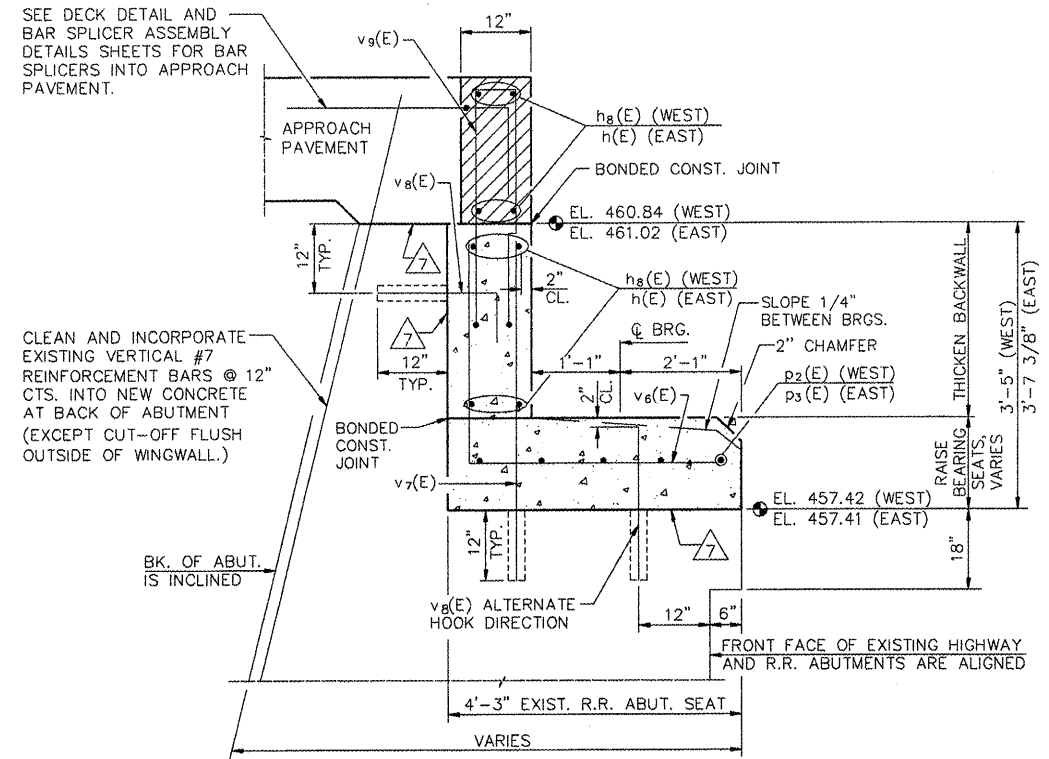


F.A.U. RTE.	SECTION	COUNTY	TOTAL SHEETS	SHEET NO.
6713	05-00148-00-PV	TAZEWELL	74	56
STA. 154+17.98		STRUCTURE NO. 090-0027		
FED. ROAD DIST. NO. 4 ILLINOIS		FED. AID PROJECT		

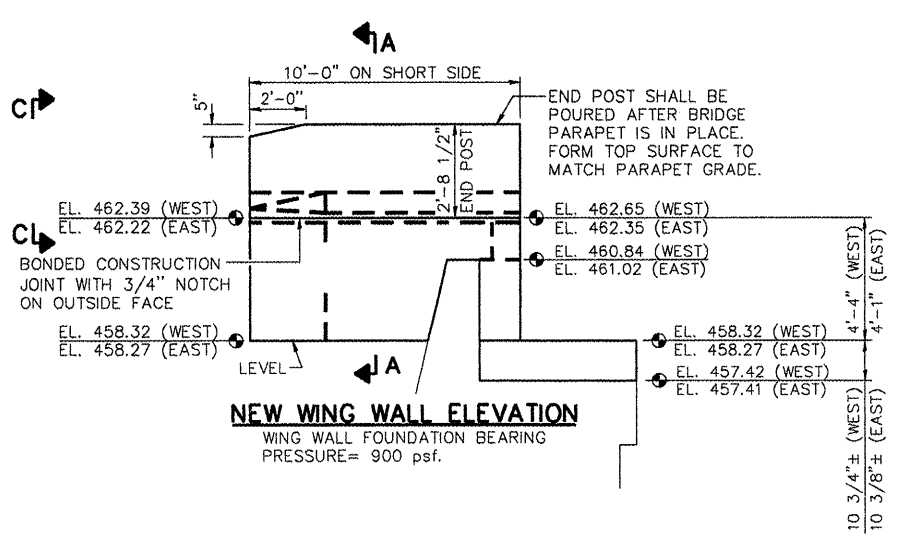


SECTION D-D
THRU EXISTING HIGHWAY ABUTMENT (AT RIGHT ANGLES)

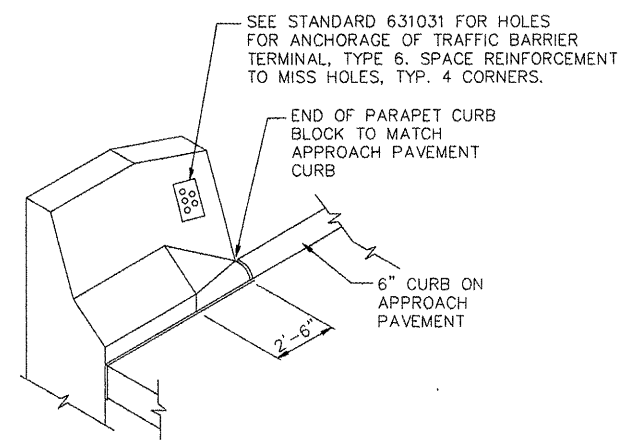


SECTION E-E
THRU RAILROAD ABUTMENT (AT RIGHT ANGLES)

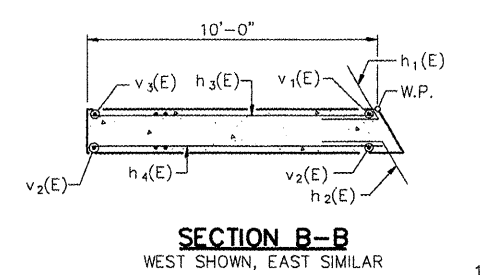
- CONCRETE PLACED AFTER SUPERSTRUCTURE FORMS HAVE BEEN REMOVED; CONCRETE QUANTITY INCLUDED WITH SUPERSTRUCTURE.
- BONDED CONSTRUCTION JOINT NEW CONCRETE TO EXISTING CONCRETE. COST INCLUDED IN "CONCRETE STRUCTURES".



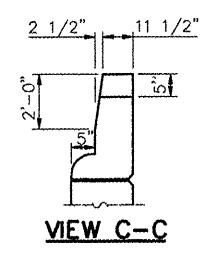
NEW WING WALL ELEVATION
WING WALL FOUNDATION BEARING PRESSURE= 900 psf.



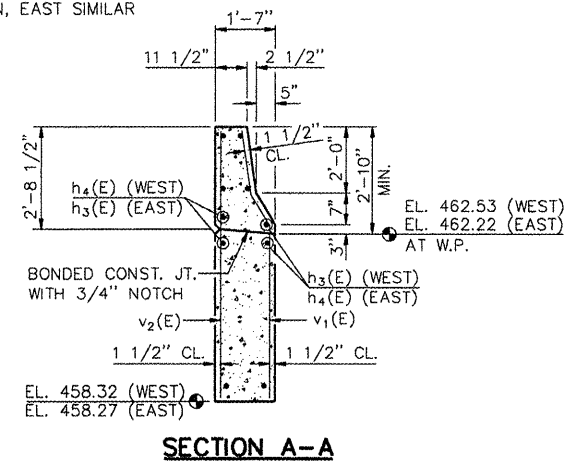
END OF PARAPET DETAIL



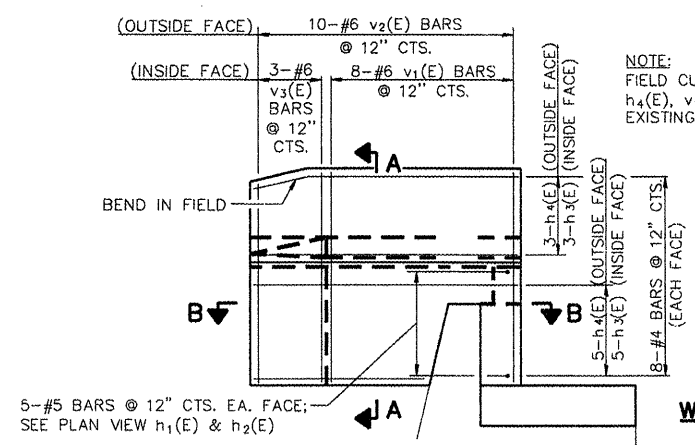
SECTION B-B
WEST SHOWN, EAST SIMILAR



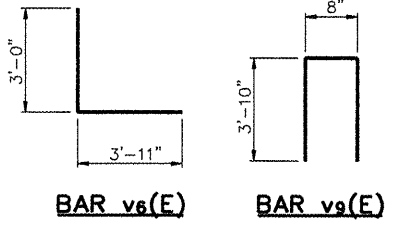
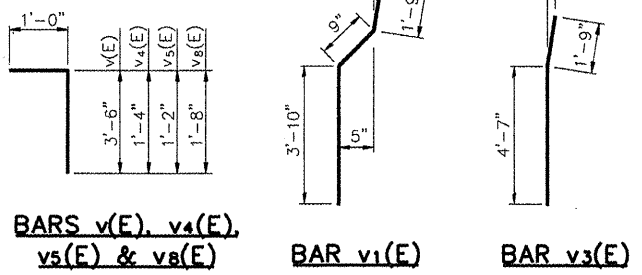
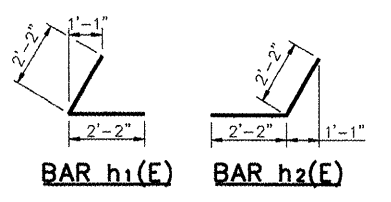
VIEW C-C



SECTION A-A



NEW WING WALL ELEVATION WITH REINFORCEMENT
(WEST SHOWN, EAST SIMILAR; USES h3(E) INSTEAD OF h4(E) & h4(E) INSTEAD OF h3(E))



WEST ABUTMENT BILL OF MATERIAL

BAR NO.	SIZE	LENGTH	SHAPE
h1(E)	#5	4'-4"	Z
h2(E)	#5	4'-4"	Z
h3(E)	#4	9'-8"	
h4(E)	#4	10'-6"	
h5(E)	#5	14'-6"	
h6(E)	#5	20'-8"	
h8(E)	#5	27'-2"	
p(E)	#7	15'-8"	
p2(E)	#7	27'-1"	
v(E)	#5	4'-6"	Z
v1(E)	#6	6'-4"	
v2(E)	#6	6'-4"	
v3(E)	#6	6'-4"	
v4(E)	#5	2'-4"	
v6(E)	#6	6'-11"	
v7(E)	#5	4'-3"	
v8(E)	#5	2'-8"	
v9(E)	#5	8'-4"	
STRUCTURE EXCAVATION			CU. YD. 22
CONCRETE STRUCTURES			CU. YD. 12.0
REINFORCEMENT BARS (EPOXY COATED)			LBS. 2,080
CONCRETE SEALER			SQ. FT. 130

EAST ABUTMENT BILL OF MATERIAL

BAR NO.	SIZE	LENGTH	SHAPE
h(E)	#5	31'-8"	
h1(E)	#5	4'-4"	Z
h2(E)	#5	4'-4"	Z
h3(E)	#4	9'-8"	
h4(E)	#4	10'-6"	
h6(E)	#5	20'-8"	
h7(E)	#5	9'-3"	
p1(E)	#7	12'-3"	
p3(E)	#7	31'-8"	
v(E)	#5	4'-6"	Z
v1(E)	#6	6'-4"	
v2(E)	#6	6'-4"	
v3(E)	#6	6'-4"	
v5(E)	#5	2'-2"	
v6(E)	#5	6'-11"	
v7(E)	#5	4'-3"	
v8(E)	#5	2'-8"	
v9(E)	#5	8'-4"	
STRUCTURE EXCAVATION			CU. YD. 21
CONCRETE STRUCTURES			CU. YD. 13.2
REINFORCEMENT BARS (EPOXY COATED)			LBS. 2,290
CONCRETE SEALER			SQ. FT. 133

REVISIONS	
NAME	DATE

ILLINOIS DEPARTMENT OF TRANSPORTATION
CAMP ST. OVER FARM CREEK DIVERSION CHANNEL ABUTMENT DETAILS

SCALE: N.T.S. DRAWN BY: MGM
DATE: 12/22/2008 CHECKED BY: P.JL