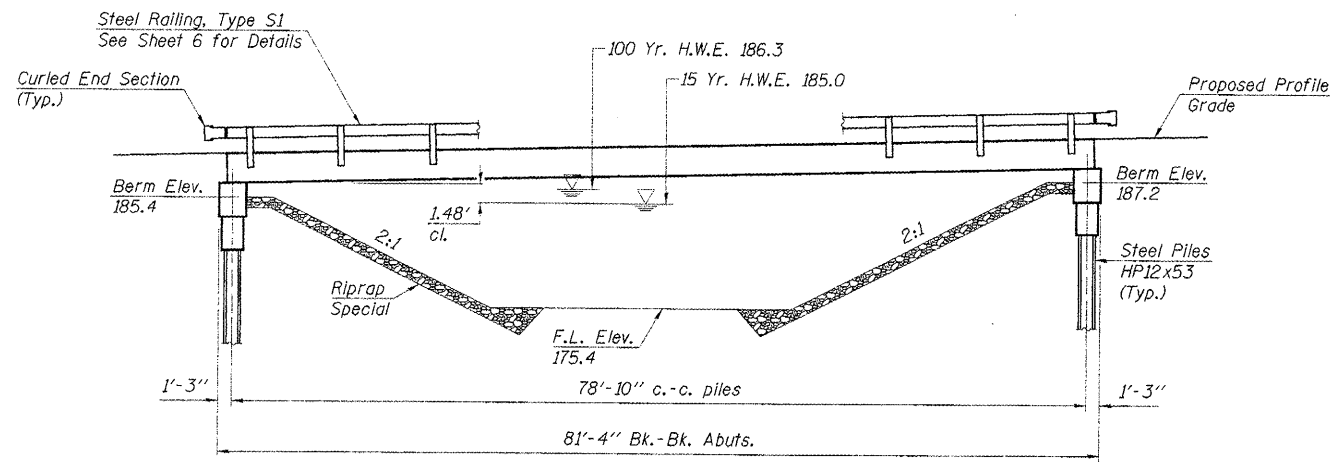
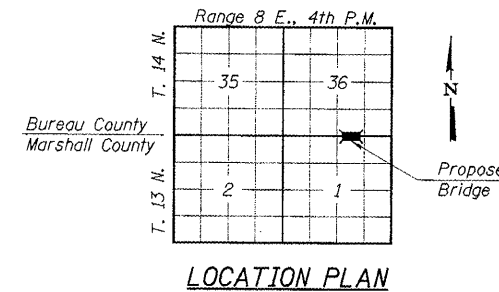


ROUTE NO.	SECTION	COUNTY	TOTAL SHEETS	SHEET NO.
T.R. 3	*	MARSHALL/BUREAU	14	4
ROAD DIST.		ILLINOIS	SARATOGA/MILO	
*05-10116-00-BR		CONTRACT NO. 89398		
08-16114-00-BR				



ELEVATION



LOCATION PLAN

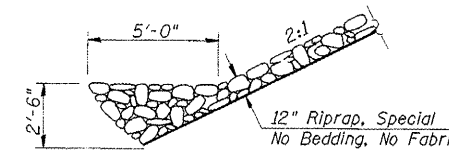
GENERAL NOTES

See Proposal for Boring data.

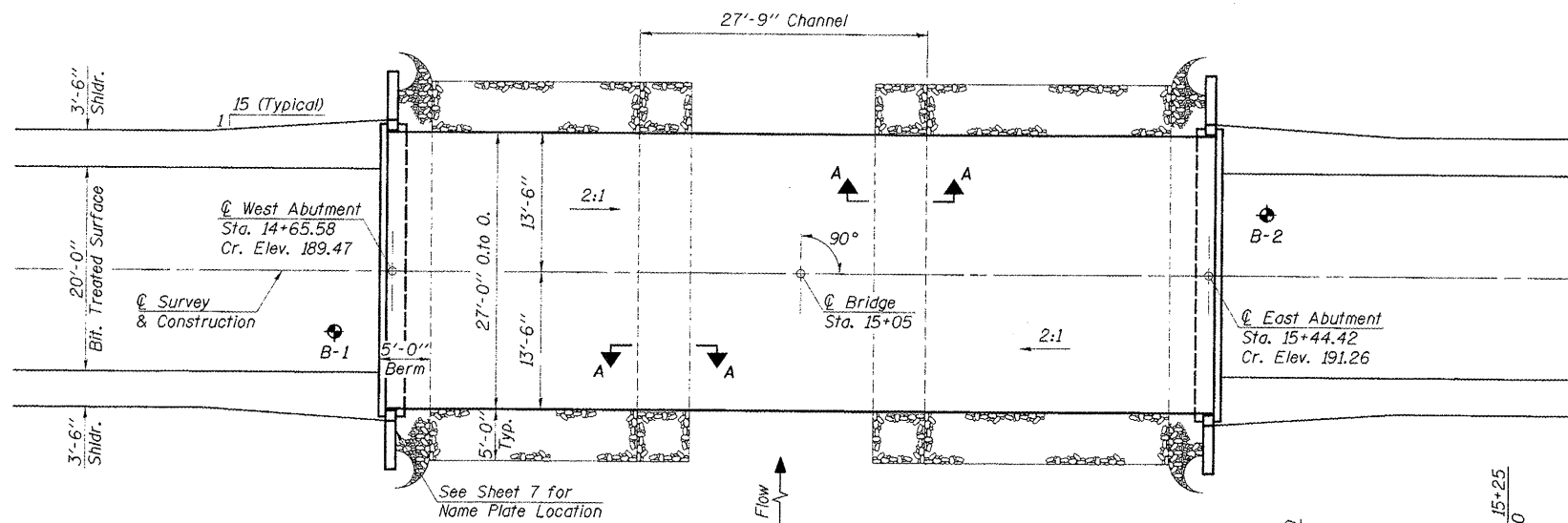
Reinforcement bars shall conform to the requirements of ASTM A706, Grade 60. See Special Provisions.

The Contractor shall drive one steel HP12x53 test pile in a permanent location at each abutment as directed by the Engineer, before ordering the remainder of piles.

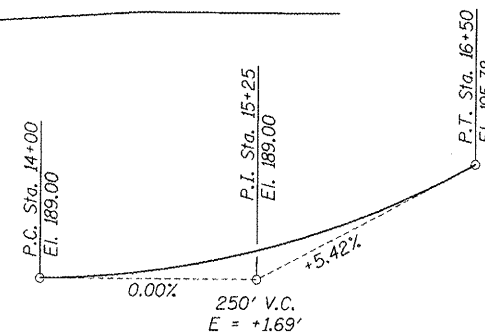
Layout of slope protection system may be varied in the field to suit ground conditions as directed by the Engineer.



RIPRAP DETAIL SECTION A-A



PLAN



PROFILE GRADE

CROW CREEK
BUILT 200_ BY
SARATOGA/MILO ROAD DISTRICTS
MARSHALL/BUREAU COUNTIES
SEC. 05-10116-00-BR
SEC. 08-16114-00-BR
STR. NO. 006-4234 LOADING HS20

LETTERING FOR NAME PLATE
See Std. 515001

TOTAL BILL OF MATERIAL

ITEM	UNIT	SUPER	SUB	TOTAL
Precast Prestressed Concrete Deck Beams (33" Depth)	Sq. Ft.	2,161		2,161
Concrete Structures	Cu. Yd.		19.4	19.4
Reinforcement Bars	Pound		2,480	2,480
Steel Railing, Type S1	Foot	160		160
Name Plates	Each		1	1
Steel Piles HP12x53	Foot		285	285
Test Piles Steel HP12x53	Each		2	2
Riprap, Special	Ton		159	159
Concrete Encasement	Cu. Yd.		2.8	2.8

DESIGN STRESSES

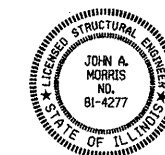
$f_c = 5,000$ p.s.i. (Prestressed Beams)
 $f_{ti} = 4,000$ p.s.i. (Prestressed Beams)
 $f_s = 270,000$ p.s.i. (Prestressed Strands)
 $f_{si} = 201,960$ p.s.i. (Prestressed Strands)
 $f_c = 3,500$ p.s.i. (Concrete -- Field Units)
 $f_y = 60,000$ p.s.i. (Reinf. Bars -- Field Units)
 $n = 8$ (Concrete)
 LOADING HS20-44
 Design Specifications: 2002 AASHTO
 25#/Sq. Ft. included in dead load for future wearing surface.

WATERWAY INFORMATION

Drainage Area	15.48 Sq. Mi.
Existing Opening (15 Yr.)	398 Sq. Ft.
Required Opening (15 Yr.)	451 Sq. Ft.
Proposed Opening (15 Yr.)	451 Sq. Ft.
Design Discharge (15 Yr.)	2217 C.F.S.
Created Head (15 Yr.)	0.0 Ft.
100 Year Discharge	3516 C.F.S.
100 Yr. Created Head	0.3 Ft.

DESIGNED	F.J.S.
CHECKED	J.A.M.
DRAWN	S.A.P.
CHECKED	J.A.M.

"I certify that to the best of my knowledge, information and belief, this bridge design is structurally adequate for the design loading shown on the plans. The design is an economical one for the style of structure and complies with requirements of the current 'AASHTO Standard Specifications for Highway Bridges'."



ILLINOIS STRUCTURAL NO. 4277 (Expires 11/30/10)

GENERAL PLAN & ELEVATION
SARATOGA - MILO ROAD DISTRICTS
SECTIONS 05-10116-00-BR & 08-16114-00-BR
MARSHALL - BUREAU COUNTIES
STATION 15+05